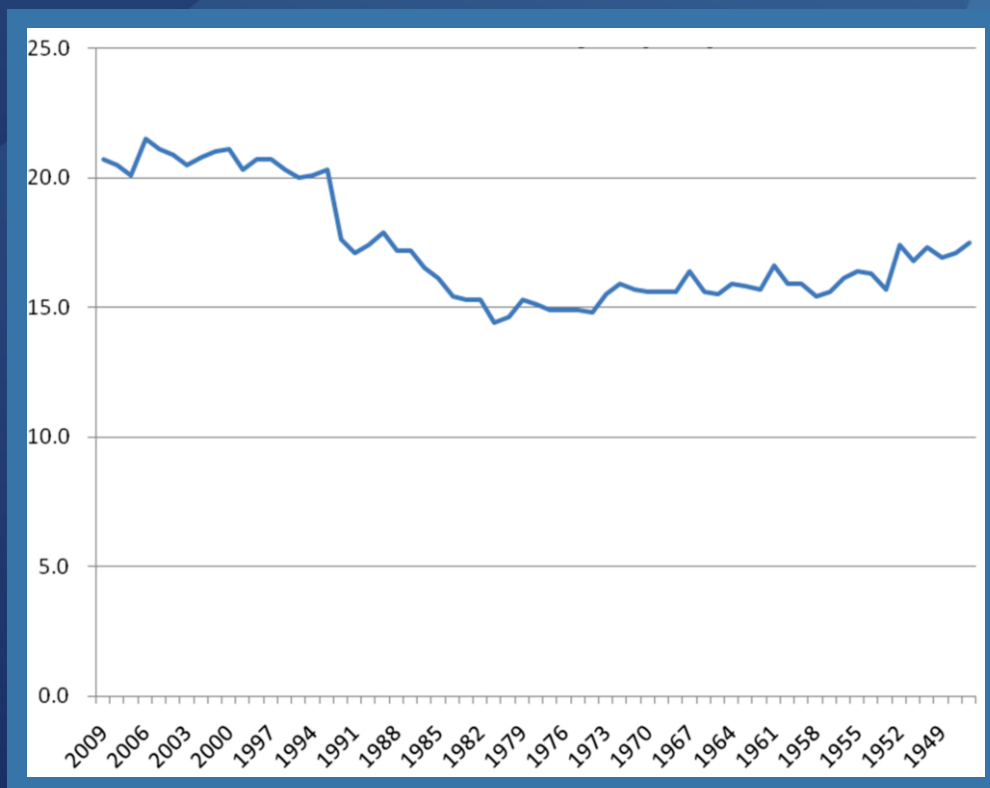


Sociology Mind



Journal Editorial Board

ISSN 2160-083X (Print) ISSN 2160-0848 (Online)

<http://www.scirp.org/journal/sm>

Editor in Chief

Prof. Asafa Jalata University of Tennessee, USA

Editorial Board

Prof. Mario I. Aguilar University of St. Andrews, UK

Dr. Mohammed H. Ali Georgia State University, USA

Dr. Jin Young Choi Sam Houston State University, USA

Dr. Wing Hong Chui University of Hong Kong, China

Dr. Isabella Crespi University of Macerata, Italy

Prof. Wilma A. Dunaway Virginia Polytechnic Institute and State University, USA

Prof. Ezekiel B. Gebissa Kettering University, USA

Prof. Faye V. Harrison University of Florida, USA

Prof. Madhu S. Mohanty California State University, USA

Dr. Jason L. Powell University of Central Lancashire, UK

Prof. Daryll Ray University of Tennessee, USA

Prof. William I. Robinson University of California-Santa Barbara, USA

Prof. Wanda Rushing University of Memphis, USA

Dr. Harwood D. Shaffer University of Tennessee, USA

Editorial Assistant

Xiaoqian Qi Scientific Research Publishing, Email: sm@scirp.org

TABLE OF CONTENTS

Volume 1 Number 4

October 2011

Altruism, Selfishness and Social Cohesion

A. L. Paolilli.....145

Evaluational Brainstorming

C. Bezzi.....151

Ethnicity and Fatigue: Expressions of Distress, Causal Attributions and Coping

K. S. Bhui, S. Dinos, M.-L. Morelli, B. Khoshaba, J. Nazroo, S. Wessely, P. D. White.....156

Education Classes and Wage Inequality among US Workers: 1950-2009

R. R. Verdugo.....164

Folklore and Northeast Indian History

M. Deka.....173

Urban Violence in Northern Border of Mexico: A Study from Nuevo León State

A. K. Acharya.....177

The Politics of Data: Uncovering Whiteness in Conventional Social Policy and Social Work Research

A. Curry-Stevens, A. Cross-Hemmer, N. Maher, J. Meier.....183

Toward a Children's Savings and College-Bound Identity Intervention for Raising College Attendance Rates:

A Multilevel Propensity Score Analysis

W. Elliott, G. Chowa, V. Loke.....192

Social Mobility of Migrant Peasant Workers in China

K.-Q. Han, C.-C. Huang, W.-J. Han.....206

A Field Exploration of Informal Workplace Communication

B. Fortado.....212

“Close Encounters of the Third Kind” Volunteering, Infrastructure and Governance

J. L. Powell.....221

Under the Flag of Blue and White: Mary as an A-National Symbol in the Greek-Orthodox Community in Israel

J. Ventura.....230

The figure on the front cover is from the article published in *Sociology Mind*, 2011, Vol. 1, No. 4, pp. 164-172 by Richard R. Verdugo.

Sociology Mind (SM)

Journal Information

SUBSCRIPTIONS

The *Sociology Mind* (Online at Scientific Research Publishing, www.SciRP.org) is published quarterly by Scientific Research Publishing, Inc., USA.

Subscription rates:

Print: \$39 per copy.

To subscribe, please contact Journals Subscriptions Department, E-mail: sub@scirp.org

SERVICES

Advertisements

Advertisement Sales Department, E-mail: service@scirp.org

Reprints (minimum quantity 100 copies)

Reprints Co-ordinator, Scientific Research Publishing, Inc., USA.

E-mail: sub@scirp.org

COPYRIGHT

Copyright©2011 Scientific Research Publishing, Inc.

All Rights Reserved. No part of this publication may be reproduced, stored in a retrieval system, or transmitted, in any form or by any means, electronic, mechanical, photocopying, recording, scanning or otherwise, except as described below, without the permission in writing of the Publisher.

Copying of articles is not permitted except for personal and internal use, to the extent permitted by national copyright law, or under the terms of a license issued by the national Reproduction Rights Organization.

Requests for permission for other kinds of copying, such as copying for general distribution, for advertising or promotional purposes, for creating new collective works or for resale, and other enquiries should be addressed to the Publisher.

Statements and opinions expressed in the articles and communications are those of the individual contributors and not the statements and opinion of Scientific Research Publishing, Inc. We assume no responsibility or liability for any damage or injury to persons or property arising out of the use of any materials, instructions, methods or ideas contained herein. We expressly disclaim any implied warranties of merchantability or fitness for a particular purpose. If expert assistance is required, the services of a competent professional person should be sought.

PRODUCTION INFORMATION

For manuscripts that have been accepted for publication, please contact:

E-mail: sm@scirp.org

Call for Papers



Sociology Mind

ISSN Print: 2160-083X ISSN Online: 2160-0848

<http://www.scirp.org/journal/sm>

SM is an international refereed dedicated to the latest advancement of sociology. The goal of this journal is to keep a record of the state-of-the-art research and promote the research work in the areas.

Editor in Chief

Prof. Asafa Jalata

University of Tennessee, USA

Editorial Board

Prof. Mario I. Aguilar

University of St. Andrews., UK

Dr. Mohammed H. Ali

Georgia State University, USA

Dr. Jin Young Choi

Sam Houston State University, USA

Dr. Wing Hong Chui

University of Hong Kong, China

Dr. Isabella Crespi

University of Macerata, Italy

Prof. Wilma A. Dunaway

Virginia Polytechnic Institute and State University, USA

Prof. Ezekiel B. Gebissa

Kettering University, USA

Prof. Faye V. Harrison

University of Florida, USA

Prof. Madhu S. Mohanty

California State University, USA

Dr. Jason L. Powell

University of Central Lancashire, UK

Prof. Daryll Ray

University of Tennessee, USA

Prof. William I. Robinson

University of California-Santa Barbara, USA

Prof. Wanda Rushing

University of Memphis, USA

Dr. Harwood D. Shaffer

University of Tennessee, USA

Subject Coverage

The main purpose and goal of this journal is to synergize sociological imagination in the 21st century toward a critical understanding of new social and cultural forces that call for scientific interpretation and analysis of facts and values. Specifically, it seeks to:

- Promote analytical research and inquiry in socio-cultural aspects of human conditions that warrant scientific interventions;
- Develop sociological models and methods to unravel and resolve inter-and-intra-societal problems that cause dysfunctional behaviors among people, communities and nations;
- Foster interdisciplinarity as a vehicle of scientific dialogue and communication toward a better world.

These three main objectives may be further broken into a broad range of aspects and issues that fall within the encyclopedic scope of sociological inquiry and research. The Journal also publishes: 1) Short reports—2-5 page papers in which an author can either present an idea with a theoretical background but has not yet completed the research needed for a complete paper, or preliminary data; 2) Book reviews—Comments and critiques.

Notes for Intending Authors

Submitted papers should not have been previously published nor be currently under consideration for publication elsewhere. Paper submission will be handled electronically through the website. All papers are refereed through a peer review process. For more details about the submissions, please access the website.

Website and E-Mail

<http://www.scirp.org/journal/sm>

E-mail: sm@scirp.org