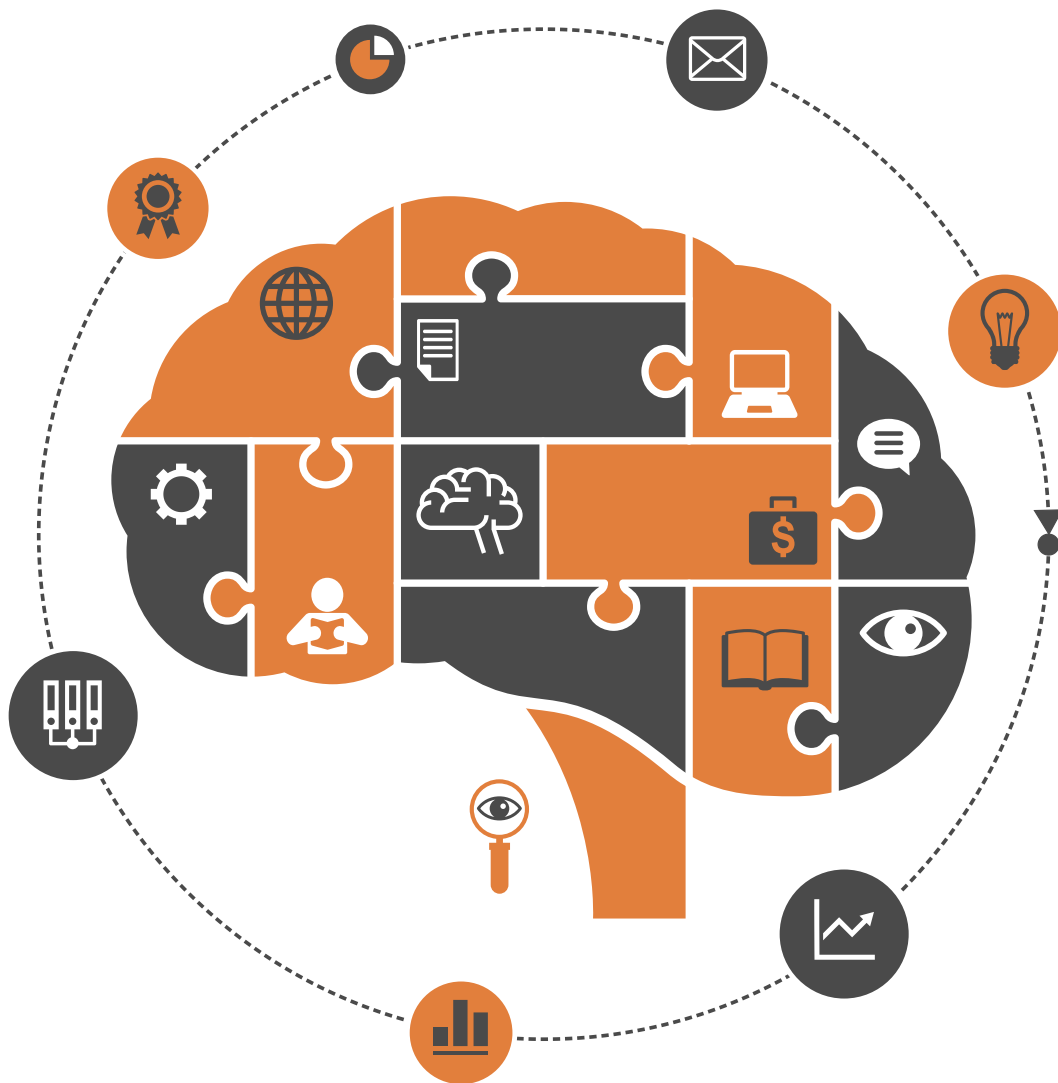


# Psychology



ISSN: 2152-7180



9 772152 718003 12

<https://www.scirp.org/journal/psych>

# Journal Editorial Board

ISSN Print: 2152-7180 ISSN Online: 2152-7199

<https://www.scirp.org/journal/psych>

---

## Editorial Board

<b>Dr. Ruggero Andrisano-Ruggieri</b>	University of Salerno, Italy
<b>Dr. Yoram Bar-Tal</b>	Tel-Aviv University, Israel
<b>Prof. Adital Ben-Ari</b>	University of Haifa, Israel
<b>Prof. Sefa Bulut</b>	Ibn Haldun University, Turkey
<b>Prof. Matthew C. Costello</b>	Indiana University South Bend, USA
<b>Dr. Jay R. Elliott</b>	Yale University, USA
<b>Dr. Thomas Vincent Frederick</b>	California Baptist University, USA
<b>Prof. Jay Friedenber</b>	Manhattan College, USA
<b>Prof. George Kyriacou Georgiou</b>	University of Alberta, Canada
<b>Dr. David M. Goodman</b>	Harvard Medical School, USA
<b>Dr. Hong Jiao</b>	University of Maryland, USA
<b>Dr. Michelle Y. Kibby</b>	Southern Illinois University, USA
<b>Prof. Kenneth A. Kiewra</b>	University of Nebraska-Lincoln, USA
<b>Prof. Beth Kurtz-Costes</b>	University of North Carolina, USA
<b>Dr. Giovanni Laviola</b>	Italian National Institute of Health, Italy
<b>Prof. Yang Lee</b>	Gyeongsang National University, South Korea
<b>Dr. Katerina Maniadaki</b>	Technological Educational Institution, Greece
<b>Prof. Tim F. McLaughlin</b>	Gonzaga University, USA
<b>Dr. John T. Mitchell</b>	Duke University, USA
<b>Dr. Melodee Mograss</b>	McGill University, Canada
<b>Dr. Ora Nakash</b>	Interdisciplinary Center (IDC) Herzliya, Israel
<b>Dr. Raffaella Nori</b>	University of Bologna, Italy
<b>Dr. Jennifer Kim Plybon Penberthy</b>	University of Virginia School of Medicine, USA
<b>Dr. So-Jung Seo</b>	Kyung Hee University, South Korea
<b>Prof. Tuomo Antero Takala</b>	University of Jyväskylä, Finland
<b>Dr. Kasım Tatlıhoğlu</b>	Bingöl University, Turkey
<b>Prof. Massimiliano Versace</b>	Boston University, USA
<b>Prof. Edda Weigand</b>	University of Münster, Germany
<b>Dr. Berney J. Wilkinson</b>	Webster International University, USA
<b>Dr. Patricia Gail Williams</b>	University of Louisville, USA
<b>Dr. Hui-Ching Wu</b>	National Taiwan University, Chinese Taipei
<b>Prof. Wengang Yin</b>	Chinese Academy of Sciences, China

# Table of Contents

**Volume 10    Number 12**

**September 2019**

**Effects of Visual Prompt on Recycling Behavior of Waste Batteries**

Y. Q. Deng, F. Z. Zhang.....1565

**How Do Background Factors Influence Children’s Attitudes toward Gays and Lesbians?**

S. Q. Zhang, S. H. Feng, Z. M. Shen.....1572

**Gender Diversity and LGBTQ Inclusion in K-12 through Higher Education**

A. Mitchell, A. Mitchell.....1595

**More than Meets the Eye: A Photo-Elicitation Study of Gender (Dis)affirmation in Seven Gender Non-Conforming University Students**

G. L. Witcomb, H. Brophy, H. McDermott.....1599

**The Lower Prolactin Serum Level Is a Characteristic of Anorexia Nervosa with Depression**

J. H. Yue, M. F. Cheng, H. Wang, S. L. Wen.....1615

**Sex Differences in Tobacco Abstinence: Effects on Executive Functioning**

F. Eleuteri, D. Rusich, A. S. Jansari, L. S. Arduino.....1622

**Teachers’ Learning in Community of Implementing Mathematics Textbooks with Lesson Study and Open Approach**

C. Senawongsa, M. Inprasitha, A. Sudejamnong.....1636

**The Relationship between Positive Psychological Capital and Coping Styles: A Study on Young Adults**

P. Gupta, N. De, S. Hati, C. Saikia, R. Karmakar.....1649

**Gender Differences in Intimate Partner Violence via Electronic Communication Technology: An Exploratory Study of Older Adolescents and Young Adults**

C. Hassett-Walker.....1663

**PTSD, ASD, Secondary-Traumatization, and Death-Anxiety among Civilians and Professionals as Outcomes of On-Going Wars, Terror Attacks and Military Operations: An Integrative View**

P. Ron.....1688

**The Association between Therapeutic Alliance and Individuals’ Wish to Die or Live**

M. Ring, S. Walther, A. C. Gysin-Maillart.....1711

**Development the Scale of Ability of Preschool Teachers to Promote Children’s Mathematical Thinking, and Situational Analysis of Japanese Preschool Teachers**

T. Sakai, K. Okado, H. Akai.....1726

**The Matrix and the Intruder**

G. G. Carminati, F. Carminati.....1742

**Reading Skills in Deaf Subjects: Role of Psycholinguistic Factors and Global Influences in Affecting Reading Performance**

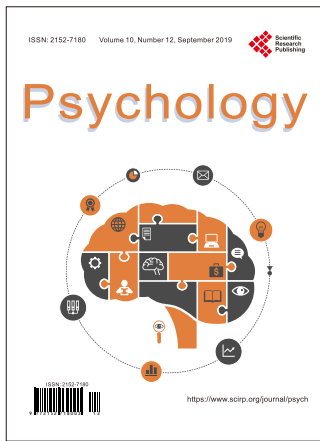
C. V. Marinelli, F. Vizzi, P. Zoccolotti.....1754

**Impact of Time Spent in Front of Screens and Frequency of Risk Behaviours According to Type of Screen: A Cross Sectional Study in Teenagers**

S. Mignot, P. Pourrat, P. Ingrand, A.-L. Heintz, N. Jaafari, P. Binder.....1776

**Alabama Parenting Questionnaire—Short Form (APQ-9): Evidencing Construct Validity with Factor Analysis, CFA MTMM and Measurement Invariance in a Greek Sample**

T. A. Kyriazos, A. Stalikas.....1790



Call for Papers

# Psychology (PSYCH)

ISSN Print: 2152-7180 ISSN Online: 2152-7199

<https://www.scirp.org/journal/psych>

---

PSYCH is an international refereed journal dedicated to the latest advancement of Psychology. The goal of this journal is to keep a record of the state-of-the-art research and promote the research work in these fast moving areas.

---

## Subject Coverage

This journal invites original research and review papers that address the following issues in Psychology. Topics of interest include, but are not limited to:

Anomalistic Psychology	Military Psychology
Behavioral Psychology	National Psychology
Biological Basis of Behavior	Neuropsychology
Clinical Psychology	Others
Cognitive Psychology	Political Psychology
Counseling Psychology	Professional Practice
Cultural Psychology	Psychological Assessment and Evaluation
Economic Psychology	Psychology of Art
Educational Psychology	Psychology of Religion
Engineering Psychology	Psychotherapy
Environmental Psychology	Safety Psychology
Ethics in Psychology	School Psychology
Family Psychology and Couples Psychology	Scientific Psychology
Forensic Psychology	Social Psychology
Gerontology	Sport Psychology
Health Psychology	Traffic Psychology
Intelligence Psychology	Work, Industrial and Organizational Psychology
Managerial and Leadership Psychology	

We are also interested in short papers (letters) that clearly address a specific problem, and short survey or position papers that sketch the results or problems on a specific topic. Authors of selected short papers would be invited to write a regular paper on the same topic for future issues of the **PSYCH**.

## Notes for Intending Authors

---

Submitted papers should not have been previously published nor be currently under consideration for publication elsewhere. Paper submission will be handled electronically through the website. All papers are refereed through a peer review process. For more details about the submissions, please access the website.

---

## Website and E-Mail

<https://www.scirp.org/journal/psych>

E-mail: [psych@scirp.org](mailto:psych@scirp.org)

## ***What is SCIRP?***

Scientific Research Publishing (SCIRP) is one of the largest Open Access journal publishers. It is currently publishing more than 200 open access, online, peer-reviewed journals covering a wide range of academic disciplines. SCIRP serves the worldwide academic communities and contributes to the progress and application of science with its publication.

## ***What is Open Access?***

All original research papers published by SCIRP are made freely and permanently accessible online immediately upon publication. To be able to provide open access journals, SCIRP defrays operation costs from authors and subscription charges only for its printed version. Open access publishing allows an immediate, worldwide, barrier-free, open access to the full text of research papers, which is in the best interests of the scientific community.

- High visibility for maximum global exposure with open access publishing model
- Rigorous peer review of research papers
- Prompt faster publication with less cost
- Guaranteed targeted, multidisciplinary audience



**Scientific  
Research  
Publishing**

**Website: <https://www.scirp.org>**

**Subscription: [sub@scirp.org](mailto:sub@scirp.org)**

**Advertisement: [service@scirp.org](mailto:service@scirp.org)**