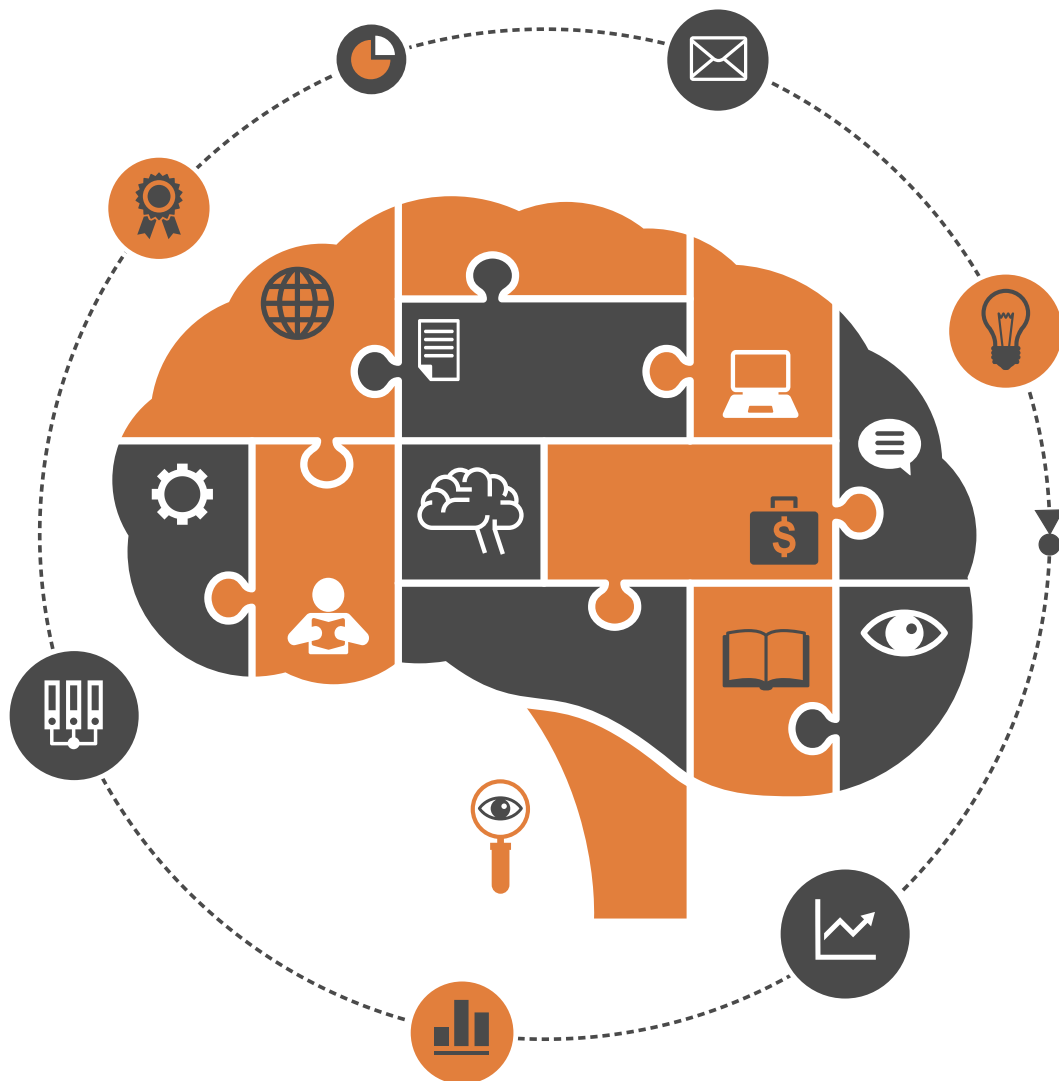


Psychology



ISSN: 2152-7180



Journal Editorial Board

ISSN Print: 2152-7180 ISSN Online: 2152-7199

<http://www.scirp.org/journal/psych>

Editorial Board

| | |
|--|---|
| Dr. Ruggero Andrisano-Ruggieri | University of Salerno, Italy |
| Dr. Yoram Bar-Tal | Tel-Aviv University, Israel |
| Prof. Adital Ben-Ari | University of Haifa, Israel |
| Dr. Sefa Bulut | Ibn Haldun University, Turkey |
| Prof. Matthew C. Costello | Indiana University South Bend, USA |
| Dr. Jay R. Elliott | Yale University, USA |
| Dr. Thomas Vincent Frederick | California Baptist University, USA |
| Prof. Jay Friedenber | Manhattan College, USA |
| Prof. George Kyriacou Georgiou | University of Alberta, Canada |
| Dr. David M. Goodman | Harvard Medical School, USA |
| Dr. Hong Jiao | University of Maryland, USA |
| Dr. Michelle Y. Kibby | Southern Illinois University, USA |
| Prof. Kenneth A. Kiewra | University of Nebraska-Lincoln, USA |
| Prof. Beth Kurtz-Costes | University of North Carolina, USA |
| Dr. Giovanni Laviola | Italian National Institute of Health, Italy |
| Prof. Yang Lee | Gyeongsang National University, South Korea |
| Dr. Katerina Maniadaki | Technological Educational Institution, Greece |
| Prof. Tim F. McLaughlin | Gonzaga University, USA |
| Dr. John T. Mitchell | Duke University, USA |
| Dr. Melodee Mograss | McGill University, Canada |
| Dr. Ora Nakash | Interdisciplinary Center (IDC) Herzliya, Israel |
| Dr. Raffaella Nori | University of Bologna, Italy |
| Dr. Jennifer Kim Plybon Penberthy | University of Virginia School of Medicine, USA |
| Dr. So-Jung Seo | Kyung Hee University, South Korea |
| Prof. Tuomo Antero Takala | University of Jyväskylä, Finland |
| Prof. Massimiliano Versace | Boston University, USA |
| Prof. Edda Weigand | University of Münster, Germany |
| Dr. Berney J. Wilkinson | Webster International University, USA |
| Dr. Patricia Gail Williams | University of Louisville, USA |
| Dr. Hui-Ching Wu | National Taiwan University, Chinese Taipei |
| Prof. Wengang Yin | Chinese Academy of Sciences, China |

Table of Contents

Volume 9 Number 6

June 2018

Childrearing Practices and Children’s Behaviours: A Correlational Study Considering Gender and School Age of Children

J. A. Rovaris, A. T. Bolsoni-Silva.....1245

Psychopathy in Serial Killers and Political Crime

V. Zepinic.....1262

Fame in Psychology: A Pilot Study

A. Furnham.....1284

“Add Flow to the Fire”: Flow and Hope as a Shield against Burnout of Fire Service Workers

V. Yotsidi, N. Kourmoussi, E. Dermizaki, C. Pezirkianidis, K. Kounenou.....1291

A Conceptual Model and Measurement of Identity-Based, Existential Annihilation Anxieties (EAA)

I. A. Kira, T. Templin, L. Lewandowski, H. Shuwiekh.....1306

The Performance Art of Marina Abramovic as a Transformational Experience

L. Simões, M. C. Passos.....1329

Empathy Diminishes Prejudice: Active Perspective-Taking, Regardless of Target and Mortality Salience, Decreases Implicit Racial Bias

T. J. Pashak, M. A. Conley, D. J. Whitney, S. R. Oswald, S. G. Heckroth, E. M. Schumacher.....1340

The Flow Short Scale (FSS) Dimensionality and What MIMIC Shows on Heterogeneity and Invariance

T. A. Kyriazos, A. Stalikas, K. Prassa, M. Galanakis, K. Flora, V. Chatzilia.....1357

Psychological Well-Being and Self-Efficacy in Life Skills among Italian Preadolescents with Positive Body Esteem: Preliminary Results of an Intervention Project

E. Sagone, M. E. de Caroli, M. L. Indiana, S. L. O. Fichera.....1383

Normative Study of the Recognition Words Written Test “P1” for Moroccan Children Aged 7.5 - 11.5 Years

A. El Moutez, M. El Alaoui Faris, M. Benabdejlil.....1397

How Help-Seeking Expectations Are Associated with Relational and Physical Victimization among Japanese Adolescents

H. Mizuno, T. Yanagida, Y. Toda.....1412

Fairness Is a More Effective Interpersonal Motive than Care for Sustaining Prosocial Behaviour

M. Brasini, S. D. Vecchio, E. Gregni, C. Casali, F. Mira, N. Capuano, V. Questa, M. Giacomantonio,
F. Mancini.....1426

The Positivity of Anger: Non-Expression of Anger Causes Deterioration in Relationships

S. Uehara, T. Tamura, T. Nakagawa.....1444

Teens' Perception about Social Networking Sites: Does Facebook Influence Teens' Self-Esteem?

A. Botou, P.-S. Marsellos.....1453

Concerns Involving the Self: What Is the Real Target of Anxiety, Regret, or Worry, When Things Do Not Go Right for You? More Evidence from Sweden and the United State

K. Hayase.....1475

The Role of Occupational Stress and Emotional Intelligence in Working Health-Care and Medical Environments

K. Kanellakis, E. Karakasidou, N.-S. Koutsoukis.....1516

Characterological Correlates of Selfie Taking Behavior

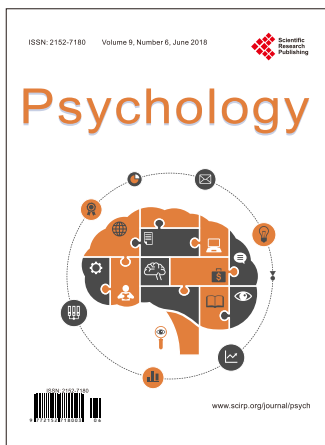
E. Gilliland, M. J. Kiss, M. A. Morrison, T. G. Morrison.....1530

University Students' Self-Rated Ability to Interpret Social Context and Correlating Factors

M. Kobayashi, N. Fukuda, K. Ichikura, T. Asakura.....1546

Algebraic Reasoning in Early Grade: Promoting through Lesson Study and Open Approach

P. Moonpo, M. Inprasitha, N. Changsri.....1558



Call for Papers

Psychology (PSYCH)

ISSN Print: 2152-7180 ISSN Online: 2152-7199

<http://www.scirp.org/journal/psych>

PSYCH is an international refereed journal dedicated to the latest advancement of Psychology. The goal of this journal is to keep a record of the state-of-the-art research and promote the research work in these fast moving areas.

Subject Coverage

This journal invites original research and review papers that address the following issues in Psychology. Topics of interest include, but are not limited to:

| | |
|--|--|
| Behavioral Psychology | Military Psychology |
| Biological Basis of Behavior | National Psychology |
| Clinical Psychology | Neuropsychology |
| Cognitive Psychology | Political Psychology |
| Counseling Psychology | Professional Practice |
| Cultural Psychology | Psychological Assessment and Evaluation |
| Economic Psychology | Psychology of Art |
| Educational Psychology | Psychology of Religion |
| Engineering Psychology | Psychotherapy |
| Environmental Psychology | Safety Psychology |
| Ethics in Psychology | School Psychology |
| Family Psychology and Couples Psychology | Scientific Psychology |
| Forensic Psychology | Social Psychology |
| Gerontology | Sport Psychology |
| Health Psychology | Traffic Psychology |
| Intelligence Psychology | Work, Industrial and Organizational Psychology |
| Managerial and Leadership Psychology | Others |

We are also interested in short papers (letters) that clearly address a specific problem, and short survey or position papers that sketch the results or problems on a specific topic. Authors of selected short papers would be invited to write a regular paper on the same topic for future issues of the **PSYCH**.

Notes for Intending Authors

Submitted papers should not have been previously published nor be currently under consideration for publication elsewhere. Paper submission will be handled electronically through the website. All papers are refereed through a peer review process. For more details about the submissions, please access the website.

Website and E-Mail

<http://www.scirp.org/journal/psych>

E-mail: psych@scirp.org

What is SCIRP?

Scientific Research Publishing (SCIRP) is one of the largest Open Access journal publishers. It is currently publishing more than 200 open access, online, peer-reviewed journals covering a wide range of academic disciplines. SCIRP serves the worldwide academic communities and contributes to the progress and application of science with its publication.

What is Open Access?

All original research papers published by SCIRP are made freely and permanently accessible online immediately upon publication. To be able to provide open access journals, SCIRP defrays operation costs from authors and subscription charges only for its printed version. Open access publishing allows an immediate, worldwide, barrier-free, open access to the full text of research papers, which is in the best interests of the scientific community.

- High visibility for maximum global exposure with open access publishing model
- Rigorous peer review of research papers
- Prompt faster publication with less cost
- Guaranteed targeted, multidisciplinary audience



**Scientific
Research
Publishing**

Website: <http://www.scirp.org>

Subscription: sub@scirp.org

Advertisement: service@scirp.org