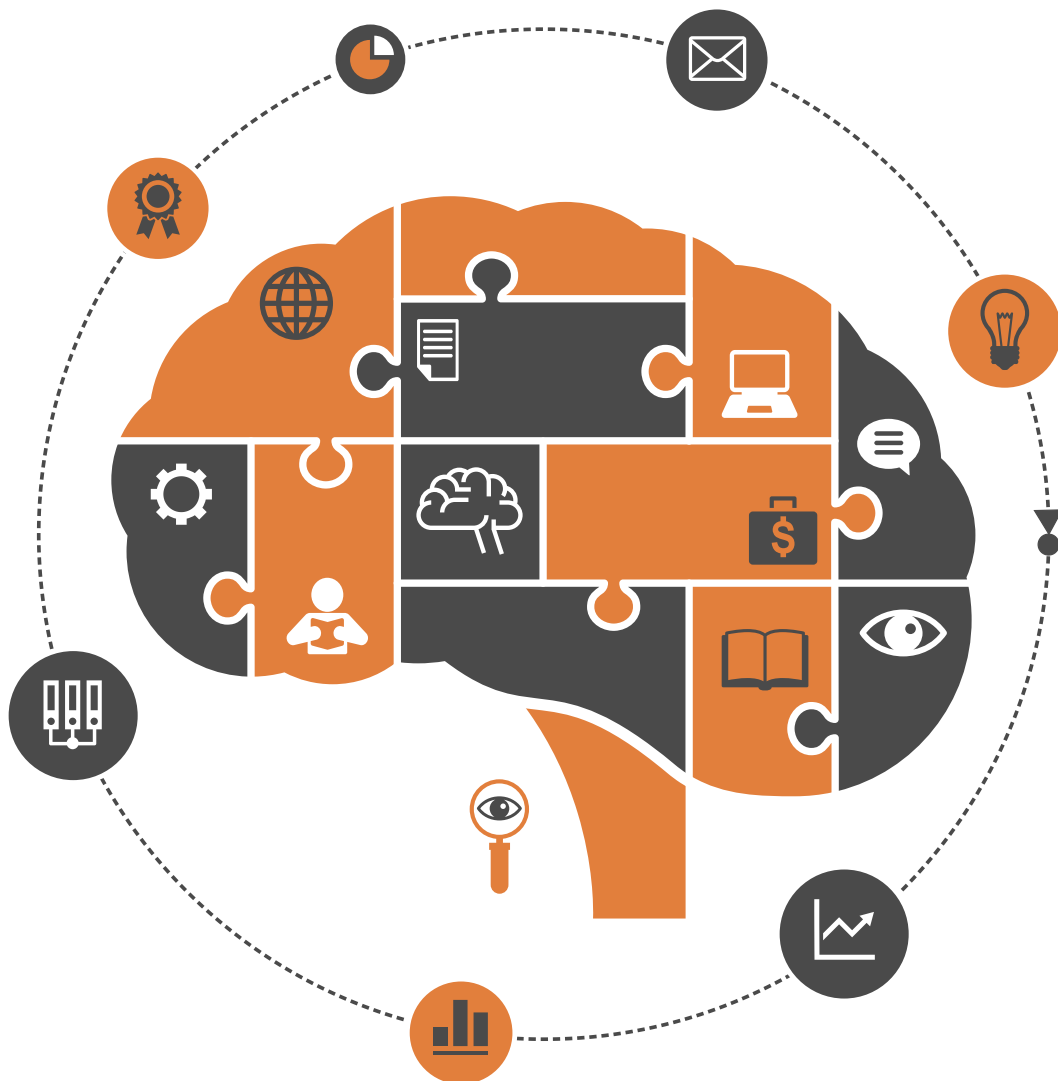


Psychology



ISSN: 2152-7180



Journal Editorial Board

ISSN Print: 2152-7180 ISSN Online: 2152-7199

<http://www.scirp.org/journal/psych>

Editor-in-Chief

Prof. Peter Walla

University of Newcastle, Australia

Editorial Board

Dr. Ruggero Andrisano-Ruggieri

University of Salerno, Italy

Dr. Yoram Bar-Tal

Tel-Aviv University, Israel

Prof. Adital Ben-Ari

University of Haifa, Israel

Dr. Sefa Bulut

Abant Izzet Baysal University, Turkey

Prof. Matthew C. Costello

Indiana University South Bend, USA

Dr. Jay R. Elliott

Yale University, USA

Dr. Thomas Vincent Frederick

California Baptist University, USA

Prof. Jay Friedenberg

Manhattan College, USA

Dr. George Kyriacou Georgiou

University of Alberta, Canada

Dr. David M. Goodman

Harvard Medical School, USA

Dr. Hong Jiao

University of Maryland, USA

Dr. Michelle Y. Kibby

Southern Illinois University, USA

Prof. Kenneth A. Kiewra

University of Nebraska-Lincoln, USA

Prof. Beth Kurtz-Costes

University of North Carolina, USA

Dr. Giovanni Laviola

Italian National Institute of Health, Italy

Prof. Yang Lee

Gyeongsang National University, South Korea

Dr. Katerina Maniadaki

Technological Educational Institution, Greece

Prof. Tim F. McLaughlin

Gonzaga University, USA

Dr. John T. Mitchell

Duke University, USA

Dr. Melodee Mograss

McGill University, Canada

Dr. Ora Nakash

Interdisciplinary Center (IDC) Herzliya, Israel

Dr. Raffaella Nori

University of Bologna, Italy

Dr. Jennifer Kim Plybon Penberthy

University of Virginia School of Medicine, USA

Dr. So-Jung Seo

Kyung Hee University, South Korea

Prof. Tuomo Antero Takala

University of Jyväskylä, Finland

Prof. Massimiliano Versace

Boston University, USA

Prof. Edda Weigand

University of Münster, Germany

Dr. Berney J. Wilkinson

Webster International University, USA

Dr. Patricia Gail Williams

University of Louisville, USA

Dr. Hui-Ching Wu

National Taiwan University, Chinese Taipei

Prof. Wengang Yin

Chinese Academy of Sciences, China

Table of Contents

Volume 8 Number 11

September 2017

**Effects of Reading a Picture Leaflet on Rhythm for Enhancement of Morning-Typed
Life in Japanese Infants**

M. Kawamata, R. Kawasumi, F. Tsuji, N. Taniwaki, T. Kawada,
T. Noji, M. Krejci, M. Nakade, H. Takeuchi, T. Harada.....1621

Special Educators' Teaching Self-Efficacy Determination: A Quantitative Approach

A.-S. Antoniou, I. Geralexis, G. Charitaki.....1642

**Differences in Ego Functions between Those with Tendency to Atypical Depression and
Those with Tendency to Melancholic Depression**

H. Hayashi, Y. Takei, A. Fujimori, I. Takeuchi, T. Hono.....1657

Genetic and Environmental Influences on Perceptual-Motor Abilities

C. M. Meira Jr., M. Massa.....1669

**The Vertical and Horizontal Spatial-Temporal Conceptual Metaphor Representation
of Chinese Temporal Words**

T. Hong, X. Y. He, R. Tillman, X. R. Zhao, Y. M. Deng.....1679

**Verbal Aggressiveness and Argumentativeness in Physical Education: Perceptions of
Teachers and Students in Qualitative and Quantitative Exploration**

S. Deliligka, A. Bekiari, I. Syrmpas.....1693

**Eating Disorders and Menarche: Can Emotions toward the First Period Provide
Insight into Future Eating Disorder Development?**

T. Beck, A. Mancuso, J. Petrides.....1718

**The Impact of Sexual Orientation on College Student Victimization: An Examination of
Sexual Minority and Non-Sexual Minority Student Populations**

M. Beaulieu, C. Dunton, L. M. Williams, J. L. Porter.....1728

The Student Well-Being Process Questionnaire (Student WPQ)

G. M. Williams, H. Pendlebury, K. Thomas, A. P. Smith.....1748

Is Dispositional Optimism Associated with Fatigue in Breast Cancer Survivors?

I. Schou-Bredal, K. Tøien.....1762

**Assessment, Intervention and Consulting in School Psychology in Children with Autism:
LAPITEA Laboratory in Brazil**

D. C. de Matos, P. G. S. de Matos.....1774

DAS²-Theory of Personality: A Cognitive Approach to the Enneagram

E. Schwarz, S. Zarrabi.....1802

Psychoanalysis, Mental Health and Drug Issues

E. O. de Castro.....1816

The Effect of Physical Activity and Gender on Well Being and Body Image of Adolescents

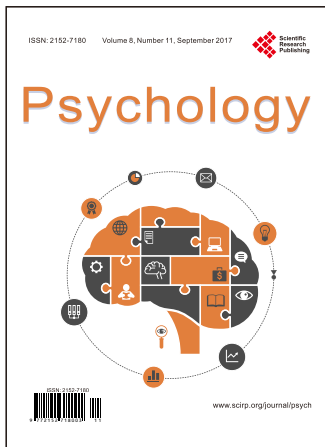
E. Petrakaki, E. Karakasidou.....1840

Coordination Matters: Interpersonal Synchrony Influences Collaborative Problem-Solving

L. K. Miles, J. Lumsden, N. Flannigan, J. S. Allsop, D. Marie.....1857

The Dark Side of Conscientiousness

A. Furnham.....1879



Call for Papers

Psychology (PSYCH)

ISSN Print: 2152-7180 ISSN Online: 2152-7199

<http://www.scirp.org/journal/psych>

PSYCH is an international refereed journal dedicated to the latest advancement of Psychology. The goal of this journal is to keep a record of the state-of-the-art research and promote the research work in these fast moving areas.

Subject Coverage

This journal invites original research and review papers that address the following issues in Psychology. Topics of interest include, but are not limited to:

Behavioral Psychology	Military Psychology
Biological Basis of Behavior	National Psychology
Clinical Psychology	Neuropsychology
Cognitive Psychology	Political Psychology
Counseling Psychology	Professional Practice
Cultural Psychology	Psychological Assessment and Evaluation
Economic Psychology	Psychology of Art
Educational Psychology	Psychology of Religion
Engineering Psychology	Psychotherapy
Environmental Psychology	Safety Psychology
Ethics in Psychology	School Psychology
Family Psychology and Couples Psychology	Scientific Psychology
Forensic Psychology	Social Psychology
Gerontology	Sport Psychology
Health Psychology	Traffic Psychology
Intelligence Psychology	Work, Industrial and Organizational Psychology
Managerial and Leadership Psychology	Others

We are also interested in short papers (letters) that clearly address a specific problem, and short survey or position papers that sketch the results or problems on a specific topic. Authors of selected short papers would be invited to write a regular paper on the same topic for future issues of the **PSYCH**.

Notes for Intending Authors

Submitted papers should not have been previously published nor be currently under consideration for publication elsewhere. Paper submission will be handled electronically through the website. All papers are refereed through a peer review process. For more details about the submissions, please access the website.

Website and E-Mail

<http://www.scirp.org/journal/psych>

E-mail: psych@scirp.org

What is SCIRP?

Scientific Research Publishing (SCIRP) is one of the largest Open Access journal publishers. It is currently publishing more than 200 open access, online, peer-reviewed journals covering a wide range of academic disciplines. SCIRP serves the worldwide academic communities and contributes to the progress and application of science with its publication.

What is Open Access?

All original research papers published by SCIRP are made freely and permanently accessible online immediately upon publication. To be able to provide open access journals, SCIRP defrays operation costs from authors and subscription charges only for its printed version. Open access publishing allows an immediate, worldwide, barrier-free, open access to the full text of research papers, which is in the best interests of the scientific community.

- High visibility for maximum global exposure with open access publishing model
- Rigorous peer review of research papers
- Prompt faster publication with less cost
- Guaranteed targeted, multidisciplinary audience



**Scientific
Research
Publishing**

Website: <http://www.scirp.org>

Subscription: sub@scirp.org

Advertisement: service@scirp.org