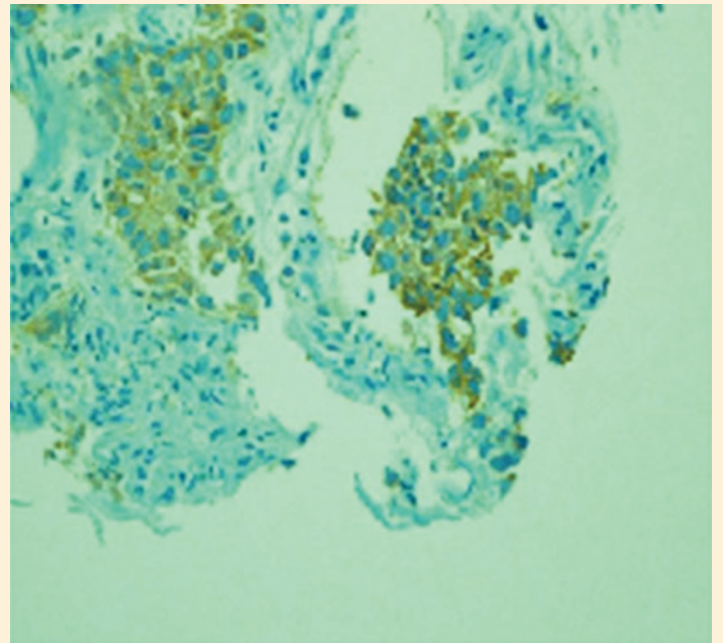
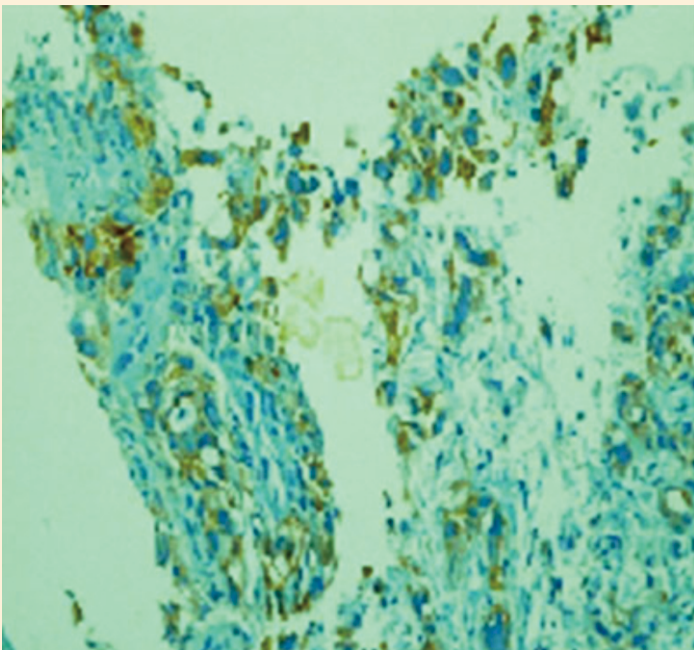


Open Journal of Pathology



Journal Editorial Board

ISSN 2164-6775 (Print) ISSN 2164-6783 (Online)

<http://www.scirp.org/journal/ojpathology>

Editor in Chief

Prof. Jianyu Rao

University of California at Los Angeles, USA

Editorial Board

Dr. Asmaa Gaber Abdou

Menofiya University, Egypt

Dr. Julio Aliberti

Cincinnati Children's Hospital Medical Center, USA

Prof. Javier Azúa-Romeo

University of Zaragoza, Spain

Dr. Roberto Bei

University of Rome Tor Vergata, Italy

Dr. Renald Blundell

University of Malta, Malta

Prof. Valquiria Bueno

Federal University of São Paulo, Brazil

Dr. Kailash C. Chadha

Roswell Park Cancer Institute, USA

Prof. Nam Hoon Cho

Yonsei Medical University, South Korea

Dr. Elahé T. Crockett

Michigan State University, USA

Dr. Qinghua Cui

Peking University, China

Prof. Jan M. A. Delabie

University of Oslo and University Hospital of Oslo, Norway

Dr. Patricia DeVilliers

University of Alabama at Birmingham, USA

Dr. Paul C. Evans

University of Sheffield, UK

Prof. Reza Hakkak

University of Arkansas for Medical Sciences, USA

Prof. Kazim Husain

Ponce School of Medicine and Medical Sciences, USA

Prof. Mansour F. Hussein

King Saud University, Saudi Arabia

Prof. Lidia Larizza

University of Milan, Italy

Dr. Anthony W. I. Lo

The Chinese University of Hong Kong, Hong Kong (China)

Prof. Churilov Leonid Pavlovich

Saint Petersburg State University, Russia

Dr. George Perry

The University of Texas at San Antonio, USA

Dr. Daniela Quaglino

University of Modena and Reggio Emilia, Italy

Dr. Sophia Ran

Southern Illinois University, USA

Dr. Mohammed S. Razzaque

Harvard School of Dental Medicine, USA

Prof. Matteo A. Russo

University of Rome, Italy

Dr. Kunihiro Sakuma

Toyohashi University of Technology, Japan

Dr. Sophie X. Song

University of California at Los Angeles Medical Center, USA

Dr. Gloria H. Su

Columbia University College of Physicians and Surgeons, USA

Prof. Takuji Tanaka

The Tohkai Cytopathology Institute: Cancer Research
and Prevention (TCI-CaRP), Japan

Dr. Mingqian Wei

Griffith University, Australia

Prof. Han-Seung Yoon

University of Otago, New Zealand

TABLE OF CONTENTS

Volume 2 Number 4

October 2012

Primary Adrenal Tumors—Five Years Single Centre Experience R. D. Patel, A. V. Vanikar, K. S. Suthar, K. V. Kanodia.....	107
Distinct Subcellular Localization of GSK-3β in Melanocytic Nevi: Implications in Melanocyte Senescence J. L. Curry, C. A. Torres-Cabala, C. L. Warneke, P. Zhang, V. G. Prieto.....	113
Overexpression of Her1 (EGFR) in Gastric Cancer: A Saudi Regional Population Based Study A. Ahmed, D. M. Al Tamimi.....	120
Plasma Cell Neoplasms, Clinicopathological Characteristics and Immunophenotype of 21 Patients M. B. Romero-Guadarrama, C. A. M. Medina, E. A. Martínez.....	127
Diffuse Large B-Cell Lymphoma of the Central Nervous System. Immunophenotype, Clinicopathological Features and Differential Diagnosis M. B. Romero-Guadarrama, M. E. G. Díaz-Ceballos, F. Jiménez-Ponce, S. Thingen-Velarde.....	133
A Case Report of an Inverted Papilloma of the Prostatic Urethra and a Synchronous Low-Grade Papillary Carcinoma of the Bladder H.-S. Yoon, A. Dempster.....	140
Molecular Particularity in Rare Tumour of Buttock: Case Report and Literature Review El F. Hinde, F. Mishellany, P. Gimbergues, F. Penault-Llorca.....	143
Plexiform Angiomyxoid Myofibroblastic Tumor of the Stomach P. F. Li, Q. Q. Zhang, X. C. Jia, Q. L. Li, Z. S. Li, Z. Wang.....	147
Diffuse Large B-Cell Lymphoma with Anaplastic Clear Cells: A Rare Variant M. B. Romero-Guadarrama, L. E. Aguilar-Ayala, G. Ott, J. Pérez-Espinosa.....	150
Rapid Disappearance of Testicular Plasmacytoma after Treatment with Lenalidomide plus Dexamethasone M. Hagihara, M. Inoue, J. Hua, N. Iwaki, K. Yoshioka, T. Kobayashi.....	155
Obstructive Azoospermia in a Patient with VATER Association Z. Y. Bing.....	159
Gastric Neuroendocrine Carcinoma in a Dog N. Herbach, S. Unterer, W. Hermanns.....	162

The figure on the front cover is from the article published in Open Journal of Pathology, 2012, Vol. 2, No. 4, pp. 120-126 by Ayesha Ahmed and Dalal M. Al Tamimi.

Open Journal of Pathology (OJPathology)

Journal Information

SUBSCRIPTIONS

The *Open Journal of Pathology* (Online at Scientific Research Publishing, www.SciRP.org) is published quarterly by Scientific Research Publishing, Inc., USA.

Subscription rates:

Print: \$39 per issue.

To subscribe, please contact Journals Subscriptions Department, E-mail: sub@scirp.org

SERVICES

Advertisements

Advertisement Sales Department, E-mail: service@scirp.org

Reprints (minimum quantity 100 copies)

Reprints Co-ordinator, Scientific Research Publishing, Inc., USA.

E-mail: sub@scirp.org

COPYRIGHT

Copyright©2012 Scientific Research Publishing, Inc.

All Rights Reserved. No part of this publication may be reproduced, stored in a retrieval system, or transmitted, in any form or by any means, electronic, mechanical, photocopying, recording, scanning or otherwise, except as described below, without the permission in writing of the Publisher.

Copying of articles is not permitted except for personal and internal use, to the extent permitted by national copyright law, or under the terms of a license issued by the national Reproduction Rights Organization.

Requests for permission for other kinds of copying, such as copying for general distribution, for advertising or promotional purposes, for creating new collective works or for resale, and other enquiries should be addressed to the Publisher.

Statements and opinions expressed in the articles and communications are those of the individual contributors and not the statements and opinion of Scientific Research Publishing, Inc. We assume no responsibility or liability for any damage or injury to persons or property arising out of the use of any materials, instructions, methods or ideas contained herein. We expressly disclaim any implied warranties of merchantability or fitness for a particular purpose. If expert assistance is required, the services of a competent professional person should be sought.

PRODUCTION INFORMATION

For manuscripts that have been accepted for publication, please contact:

E-mail: ojpathology@scirp.org



Open Journal of Pathology

ISSN: 2164-6775 (Print) ISSN: 2164-6783 (Online)
<http://www.scirp.org/journal/ojpathology>

Open Journal of Pathology is an international journal dedicated to the latest advancement of pathology. The goal of this journal is to provide a platform for researchers and academics all over the world to promote, share, and discuss various new issues and developments in pathology related problems. All manuscripts must be prepared in English, and are subject to a rigorous and fair peer-review process. Accepted papers will immediately appear online followed by printed hard copy.

Editor in Chief

Prof. Jianyu Rao

University of California at Los Angeles, USA

Editorial Board

Dr. Asmaa Gaber Abdou
Dr. Julio Aliberti
Prof. Javier Azúa-Romeo
Dr. Roberto Bei
Dr. Renald Blundell
Prof. Valquiria Bueno
Dr. Kailash C. Chadha
Prof. Nam Hoon Cho
Dr. Elahé T. Crockett
Dr. Qinghua Cui

Prof. Jan M. A. Delabie
Dr. Patricia DeVilliers
Dr. Paul C. Evans
Prof. Reza Hakkak
Prof. Kazim Husain
Prof. Mansour F. Hussein
Prof. Lidia Larizza
Dr. Anthony W. I. Lo
Prof. Churilov Leonid Pavlovich
Dr. George Perry

Dr. Daniela Quaglino
Dr. Sophia Ran
Dr. Mohammed S. Razzaque
Prof. Matteo A. Russo
Dr. Kunihiro Sakuma
Dr. Sophie X. Song
Dr. Gloria H. Su
Prof. Takuji Tanaka
Dr. Mingqian Wei
Prof. Han-Seung Yoon

Subject Coverage

The journal publishes original papers including but not limited to the following fields:

- Anatomical Pathology
- Clinical Pathology
- Dermatopathology
- Forensic Pathology
- Molecular Pathology
- Oral and Maxillofacial Pathology
- Pathochemistry
- Pathology History
- Pathophysiology
- Plant Pathology
- Psychopathology
- Veterinary Pathology

We are also interested in: 1) Short reports—2-5 page papers where an author can either present an idea with theoretical background but has not yet completed the research needed for a complete paper or preliminary data; 2) Book reviews—Comments and critiques.

Notes for Intending Authors

Submitted papers should not have been previously published nor be currently under consideration for publication elsewhere. Paper submission will be handled electronically through the website. All papers are refereed through a peer review process. For more details about the submissions, please access the website.

Website and E-Mail

<http://www.scirp.org/journal/ojpathology>

E-mail: ojpathology@scirp.org