

Thermochemical Characterization of Casamance Biomass Residues for Production of Combustibles Briquettes

Mamadou S. Ba^{1*}, Lat G. Ndiaye¹, Issakha Youm²

¹Laboratoire de Chimie et de Physique des Matériaux, Université Assane Seck, Ziguinchor, Sénégal

²Centre d'études et de recherches sur les énergies renouvelables de Dakar, Hann Bel-Air, Dakar, Sénégal

Email: m.ba2667@zig.univ.sn

How to cite this paper: Ba, M.S., Ndiaye, L.G. and Youm, I. (2019) Thermochemical Characterization of Casamance Biomass Residues for Production of Combustibles Briquettes. *Open Journal of Physical Chemistry*, 9, 170-181.

<https://doi.org/10.4236/ojpc.2019.93009>

Received: June 22, 2019

Accepted: August 12, 2019

Published: August 15, 2019

Copyright © 2019 by author(s) and Scientific Research Publishing Inc.

This work is licensed under the Creative Commons Attribution International License (CC BY 4.0).

<http://creativecommons.org/licenses/by/4.0/>



Open Access

Abstract

The development of alternatives energies illustrates the common interest of all countries in reducing greenhouse gas emissions and combating climate change. Thermochemical treatment of municipal solid waste, agricultural and forestry wastes is a major challenge for this XXIst century to replace petroleum fuels. Thermogravimetric analysis (TGA) makes it possible to elucidate the thermal behavior of Casamance (Senegal) biomass residues, mass losses and decomposition rate, under inert (N₂) atmosphere and oxidizing (O₂) atmosphere. Carbonization and briquetting techniques of these various residues encountered in this part of Senegal country, by densification in order to produce fuel briquettes (call biochars) will be used to improve stoves for cooking. Samples used in this study are peanuts shells (PNS), cashew nut shells (CNS), palm nut shells (PLS) and millet stems (MS). Elemental and approximate analyses make it possible to determine the CHNSO* composition, volatile matter, fixed carbon and ashes content of the samples used. Higher heating values (HHV) of the former residues are ranging from 28.60 MJ·kg⁻¹, 26.51 MJ·kg⁻¹, 29.69 MJ·kg⁻¹ and 24.93 MJ·kg⁻¹ respectively. The chars are obtained by slow pyrolysis with a heating rate of 5°C·min⁻¹ from ambient temperature up to 800°C under inert atmosphere. The morphology of the samples is different for the four biomasses studied, from biomass in the form of wood fibers to a more compact biomass. The parietal composition of different samples presented was determined by Van Soest method using neutral detergents (NDS), acid detergent (ADS) and sulfuric acid (H₂SO₄, 72%); to solubilize successively extractable, hemicellulose and cellulose respectively; lignin was obtained by balance (**Table 2**). The samples show a high level of cellulose, this pseudo-component is very rich in carbon directly linked to the calorific value, whose values vary from 32.35%; 24.20%; 34.94% and 39.67%

for PNS, PLS, CNS and MS respectively.

Keywords

Co-Products, Carbonization, Biochar, NDS, ADS and TGA

1. Introduction

In view of the predictable depletion of fossil resources and the environmental problems engendered by their consumption [1], the use of alternative energy sources is essential in order to continue meeting global energy needs while preserving the environment [2]. Biomass is today considered as the leading source of renewable energy and the most spread in worldwide. The thermochemical decomposition of biomass can be carried out in the number of ways such as pyrolysis, gasification and combustion [3], by varying operating conditions such as vapor residence time, heating rate and reactor configuration. Pyrolysis is a technical method used to produce a range of products in the form of solid, liquid and gaseous fuels.

Energy is the foundation of economic and social development and its access is a critical issue in the fight against poverty. Much of the population of Casamance doesn't have access to fossil fuels for lighting and cooking foods due to high rate of poverty. In 2014, the World Food Program, estimated poverty rate of 76.6%; 68.3% and 66.8% respectively for the three regions Kolda, Sédhiou and Ziguinchor that make up the natural region of Casamance [4]. The idea of this study is to determine the thermophysical characteristics decomposition of biomass, making it possible to produce briquette fuels based on agricultural or forestry residues such as peanuts shells (PNS), cashew nut shells (CNS), palm nut shells (PLS) and millet stems (MS). Production of these biofuels contributes to meet their energy needs, to fight against poverty, but also climate change in relation to petroleum products. The main sources of energy used by this population are wood and charcoal, which cause deforestation and the disappearance of plants species. In rural areas, the primary energy is satisfied thanks to the wood drawn directly from the forest. The production of coal from wood has traditionally been done using the "*meule casamançaise*". To better meet demand and optimize the production of biofuels, it's essential to replace old methods with a new technique of carbonization of biomass "Ifût" and product fuels briquette by "rotor press". The efficiency of new technologies is mainly based on the understanding and control of the processes taking place during the production of coals.

Biomass is generally composed of three main groups of natural polymeric materials: cellulose (around 50% on dry basis), hemicellulose (10% - 30% in wood and 10% - 40% in herbaceous biomass on dry basis), and lignin (20% - 40% in wood and 10% - 40% in herbaceous on dry basis) [3]. Cellulose ($C_6H_{10}O_5$)_n

and hemicellulose (D-xylose $C_5H_{10}O_5$ and D-mannose $C_6H_{12}O_6$) had respectively a fundamental elemental biomass. Lignin had $C_9H_{10}O_2$, $C_{10}H_{12}O_3$ and $C_{11}H_{14}O_{14}$ respectively of the three types of monolignols in the form of p-hydroxyphenyl, guaiacyl and syringyl [5]. The lignocellulosic fraction of the four co-products studied in this paper was obtained by Van Soest method of extraction fiber using neutral detergent (NDS) and acid detergents (ADS) and sulfuric acid (H_2SO_4 , 72%). The thermogravimetric analysis (TGA) makes it possible to study and compare the thermal behavior of the samples and demonstrate the influence of certain parameters (chemical composition, heating rate, temperature, etc.) on reaction kinetics. TGA has been widely used to provide rapid quantitative methods for examination of processes under isothermal or non-isothermal conditions and for the estimation of the effective kinetic parameters for various decomposition reactions [6].

2. Materials and Methods

2.1. Materials

The four samples used in this study were two agricultural co-products of peanuts shell (PNS) and millet stem (MS), and two forestry co-products, cashew nut shell (CNS) and palm nut shells (PLS). The fluidized bed reactor allowed us to obtain pyrolysis chars at $800^\circ C$ with a heating rate of $5^\circ C \cdot min^{-1}$ under inert atmosphere (N_2). The rotor-press is a dual-function reactor, either manually or electrically for biochar production. This reactor is used for the manufacture of biomass briquettes called biochars.

2.2. Methods

Elemental analysis of raw biomass co-products and torrefied char as well as their higher heating value, are presented in **Table 1**. The CHNS content was determined according to the CHNS250 method and the ash content was defined in accordance with standard NF M03-003. The oxygen content was also obtained by calculation whose sum of the percentage of elements revolves around 100%. The calorific value was obtained via analysis by the calorimetric IKA[®] C5003 control.

The thermogravimetric analyses were carried out at $3 L \cdot h^{-1}$ atmospheric pressure, under nitrogen or oxidizing atmosphere. The sample is placed in a platinum crucible, which is an isotherm at $30^\circ C$ for 20 min then it is subjected to a rise in temperature with a heating rate of $5^\circ C \cdot min^{-1}$ at $800^\circ C$. After isotherm at $800^\circ C$ for 30 min, the air or nitrogen supply valve is cut of allowing the cooling of the reactor to ambient temperature. Thermogravimetric analysis makes it possible to measure the mass variation of materials as a function of temperature and time in a controlled atmosphere. Its ideal use is to evaluate volatile content, thermal stability and thermal characteristics. The presence of a high water content tends to decrease its calorific value, because biomass becomes very rich in oxygen synonymous with CO_2 emission. Depending on the type of biomass, the

mass loss profile during the pyrolysis phase of a real biomass is similar to that of cellulose or lignin. The pyrolytic behavior of biomass therefore depends on the proportion of cellulose and lignin in this biomass.

Plants and food products are made up of substances belonging to different categories of carbohydrates, lipids, proteins, minerals and very complex polymers such as lignin. The various components are dosed by series of extractions with alkaline and acidic reagents, each capable of extracting one component without destroying the others. For example, an NDF (Neutral Detergent Fiber) solution allows extracting only extracts (**Figure 1**). An ADF (Acid Detergent Fiber) solution makes it possible to solubilize the hemicelluloses whose product obtained consists mainly of cellulose and lignin. While the hydrolysis of the cellulose with 72% sulfuric acid destroys the cellulose leaving the lignin intact as brown-black powdery residue. In 2002, Martens determines in detail the influence of the different steps of the NDF determination method in order to minimize variations [7]. He makes it clear that careful washing of the residue with boiling water makes it possible to eliminate protein residues, lipid residues and other non-fibrous carbohydrates which otherwise remain attached to the fibers because they are highly viscous. Martens always states that the ADF solution mainly isolates celluloses and lignin, but not hemicellulose that degraded. In addition, some fast-fermenting pectins can precipitate in the cationic detergent, cetyl trimethylammonium bromide, allows the separation of proteins from the fibrous residue. **Figure 1** shows the scheme of the extraction process of hemicelluloses, cellulose and lignin by detergents and sulfuric acid.

3. Results and Discussions

3.1. Thermal Characteristic and Chemical Composition

Table 1 shows the different values obtained during the elementary analysis and the proximate analysis of the four samples in the raw and in char state. The value

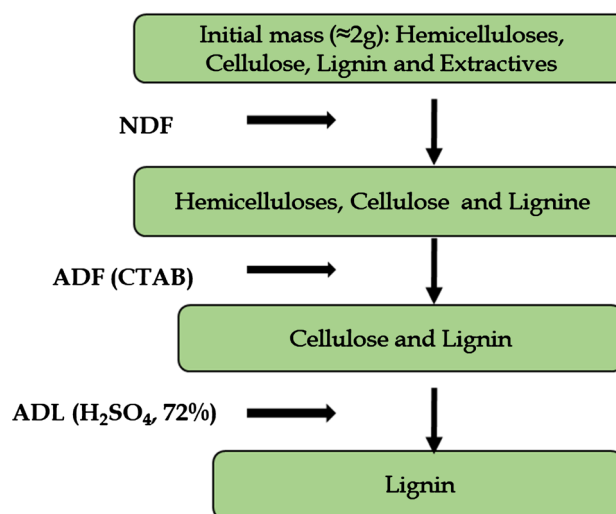


Figure 1. Extraction process of pseudo-components.

Table 1. Composition CHNSO* and HHV of several biomasses used in this study.

Samples	Ultimate analysis					Proximate analysis			HHV (MJ/kg)	
	%C	%H	%N	%O*	%S	%VM	%FC	%A		
Raw	PNS	47.12	5.77	0.86	44.11	-	61.62	23.06	2.12	18.02
	CNS	50.79	6.70	0.76	38.17	-	47.59	38.15	3.57	22.85
	PLS	42.57	5.27	0.46	49.30	0.68	74.17	9.55	2.38	18.76
	MS	40.54	5.40	0.80	47.77	-	83.10	11.41	5.47	16.35
Char	PNS	84.53	1.09	1.09	6.02	-	7.69	81.09	7.25	28.60
	CNS	78.31	1.30	1.23	6.11	-	17.47	70.57	13.02	26.51
	PLS	79.86	0.89	0.61	8.69	0.91	17.66	70.36	9.92	29.69
	MS	72.70	1.13	0.97	9.20	-	28.82	55.18	15.98	24.93

of the raw samples content of carbon, volatiles matter and calorific values vary by 40% - 50%, 45% - 85% and 16% - 23% MJ·kg⁻¹ respectively. On the other hand, these values vary considerably for those of 70% - 85%, 7% - 30% and 24 - 30 MJ·kg⁻¹. Suggesting that the increase in calorific value of samples is due to the increase in carbon. The calorific value is defined in relation to unit of mass; it represents the amount of energy contained in a unit of mass of the fuel. The minerals content present in the biodegradable fraction promotes the production of ash during combustion. In general, ash is composed predominantly of silica (Si), calcium (Ca), magnesium (Mg), potassium (K) and phosphorus (P) [8] [9] [10] [11].

3.2. Thermogravimetric Analysis

After the chemical composition analysis, it is important to analyze the thermal behavior of these biomasses as a function of the rise in temperature. Generally, the major constituents of biomass are cellulose, hemicellulose, lignin, inorganic and some extractives, which have different thermal behavior during pyrolysis. The lignocellulosic compounds study is relevant to pyrolysis because decomposition of these materials occurs at different temperature. Yang *et al.*, 2007; developed that thermal decomposition by pyrolysis of major components of hemicellulose, cellulose and lignin was shown between 200°C - 315°C, 315°C - 400°C and 160°C - 900°C respectively [12]. The kinetic measurements for pyrolysis were performed in simultaneous thermal analyzer used TG-DTA LABSYS Evo instrument, equipped with N₂ or O₂ flow device and data acquisition system. The first weight loss corresponded to moisture content where a constant weight was reached. In general, the main decomposition of lignocellulosic biomass by pyrolysis process takes place from the range of 200°C - 400°C, where, cellulose and hemicellulose are decomposed [3]. This part was attribute for the devolatilization of particular matter of fuels. Hemicelluloses play a significant role in the reactions of ignition and propagation of pyrolysis analysis [13], whose xylans are most reactive and very sensitive to the reactions of degradation and dehydration. For the thermal

degradation of cellulose one distinguishes two stages. The first stage ranging between 200°C - 280°C [13], slightly endothermic corresponds to intermolecular dehydration train the formation of anhydrocellulose intermediates to form chars, tars, carbon oxides and water [14] leading to the degradation of the molecule out of coal and volatile after 280°C. The second stage consists with the production of chars and tars by an exothermic reaction of depolymerization beyond 280°C. Hemicelluloses being most sensitive to heat, there are two steps during decomposition. The first step involves fragmentation of polymers, and the second involves the production of monomers, which decompose into volatile products. Hemicelluloses produce more gas than the cellulose at the expense of tar and char. Xylose is the main component of hemicellulose, his decomposition produces acetic acid, furfural, furanone, formaldehyde, and gases (CO, CO₂ and C_xH_y). Cellulose is the main material of wood by Shafizadeh (1982) study, he offers an inert atmosphere pyrolysis model permit to understand the ranges of cellulose degradation temperatures and their products. The author shows that below 250°C there is a dehydration reaction by reducing the degree of polymerization resulting in the removal of water. Between 250°C and 300°C, there material fragilities producing carbon monoxide (CO) and water (H₂O). The depolymerization step starts at about 300°C formation involving free radicals and levoglucosan. Above 300°C levoglucosan decomposes and vaporizes to form water, Formica acid, acetic acid and phenols [15]. The lignin starts decomposing at low temperatures between 160°C - 170°C and continuous to decompose at low rate until 900°C [16], this part favorite production of ash content in oxidant atmosphere. From where the groupings hydroxyl (OH) catalyzed the rupture of functions COOH at low temperature (T < 200°C) involving the carbon dioxide and water formation. **Figure 2** illustrates the thermal decomposition profile of our four samples used in this study in inert atmosphere.

Biomass pyrolysis is a complex process, according to describe three independent parallel reactions, each corresponding to the decomposition of hemicellulose, cellulose and lignin components. This pyrolysis reaction could described the thermal profile for decomposition of PNS, CNS, PLS and MS in nitrogen atmosphere. The maximal variation of weight is 68%, 71%, 80% and 75% for PLS, PNS, CNS and MS respectively at 5°C·min⁻¹ heating rate ramp. For all curves present here, a peak around 100°C corresponds to dehydration of biomass.

Tsamba *et al.*, 2006; showed the maximal mas loss of cashew nut shell for heating rate between 247°C and 420°C [16]. They distinguished two peaks: one is found to 320°C and the other at 395°C, respectively, corresponding to hemicellulose and cellulose decomposition with a maximal weight loss mass of 77%. In this paper, the two peaks (**Figure 3**) are distinguished one 307°C with a weight loss of 42%, and the other at 428°C with a weight loss of 70% for 5°C·min⁻¹ of heating rate. However, these previous results confirm that these peaks corresponding decomposition of the hemicellulose and cellulose, and reaction continuous to

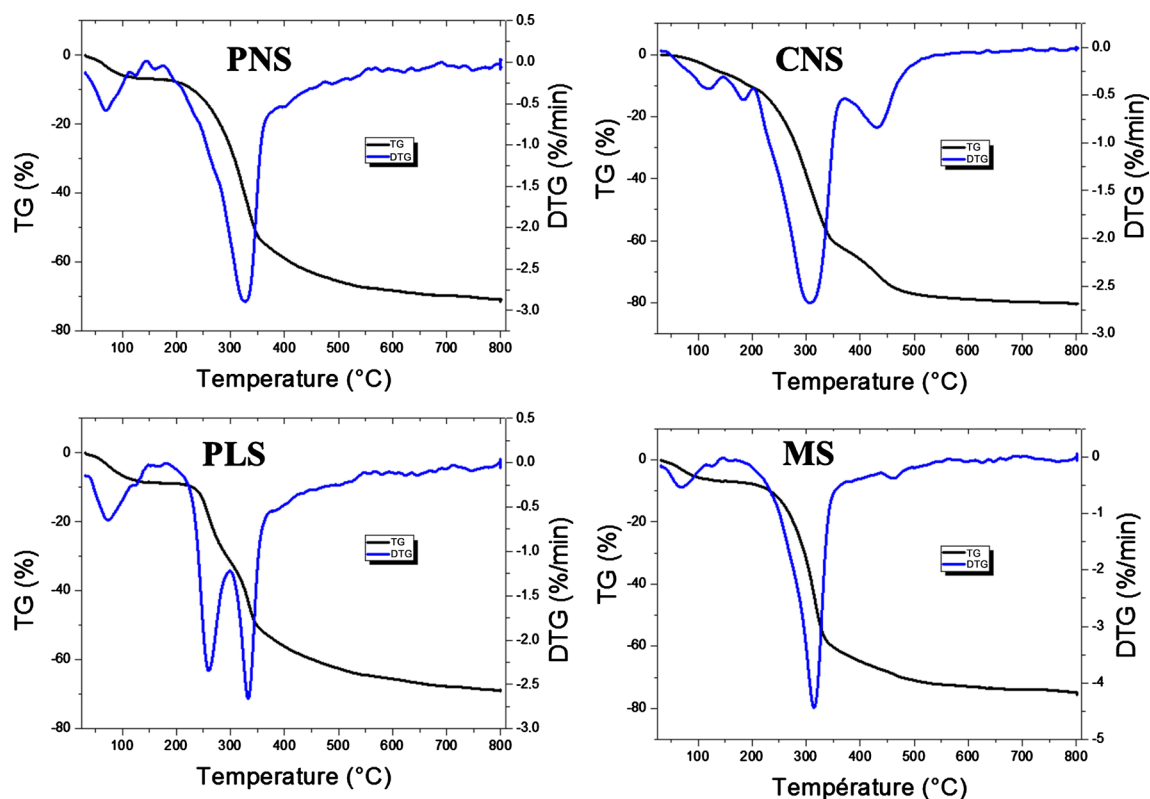


Figure 2. Thermogravimetric analysis under nitrogen atmosphere.

decomposition of the lignin to the surrounding 500°C. Study conducted by Jeguirim *et al.*, 2014. On the thermal decomposition of palm kernel shells with a ramp of 5°C·min⁻¹, they showed presence of two peaks in the devolatilization stage [17]. The first peak start at 261°C with mass loss rate of 0.04%.s⁻¹ (2.4%.min⁻¹) attributed to decomposition of hemicelluloses; the second occurs at 343°C with a maximum mass loss rate of 0.062%.s⁻¹ (3.72%.min⁻¹) attributed to cellulose decomposition. We distinguished these two peaks in this work (Figure 3), one at 257°C and the other at 337°C and their mass loss are 18% and 46% respectively. Therefore, these two peaks can be attributed for decomposition of hemicellulose and cellulose. The first peak corresponds to the decomposition of hemicellulose and the second peak to the decomposition of cellulose. There is a pointed peak for peanut shells at 328°C with a weight loss of 46% and the maximum mass loss rate of 2.89%.min⁻¹. This peak was confirmed by authors to 339°C with mass loss rate of 0.080%.s⁻¹ (4.8%.min⁻¹) [17] and at 332°C with a weight loss of 60.5% but an ramp of 10°C·min⁻¹ [18]. It can be noted that the coal yield of PLS, PNS, CNS and MS vary by 32%, 29%, 20% and 25% respectively during inert atmosphere pyrolysis.

In oxidizing atmosphere, it is found that there remains a very low ash rate of less than 5% for the four samples. The rate of volatiles varies by about 96%, 98%, 100% and 97% respectively for peanut shells, cashew nut shells, palm nut shells and millet stem. There is total carbonization and the products of ash are very small amount. ATG shows that mass loss starts at about 100°C of water evaporation

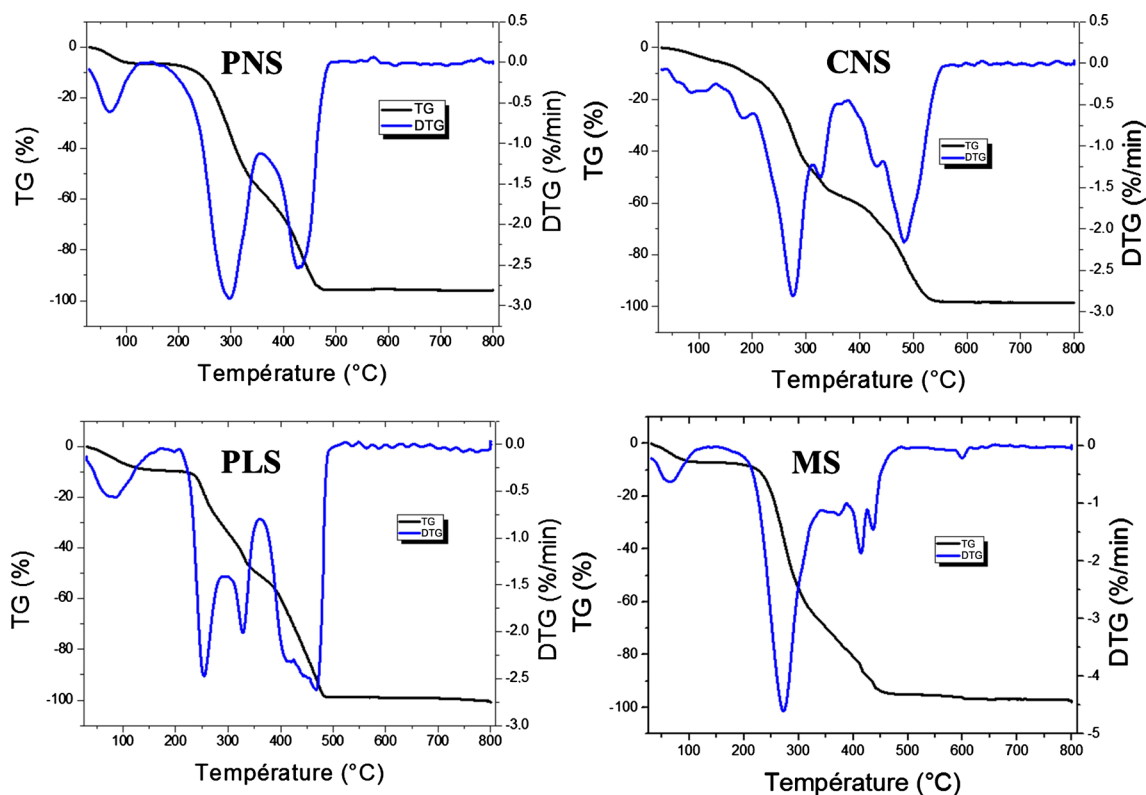


Figure 3. Thermogravimetric analysis under oxidizing atmosphere.

on the three biomass residues. PNS have two major peaks one at 298°C with a weight loss of 35% and the other at 428°C than mass loss of 97%. CNS has two peaks in the devolatilization stage, one at 276°C with a weight loss of 34% and the other at 328°C with a weight loss of 54%, the third largest peak obtained after devolatilization is around 483°C with weight loss 82%. Cashew nut combustion is dangerous because of the cashew nut shell liquid (CNSL), and smoke that irritating eyes. Indeed, the main constituents the first is at 253°C with a weight loss of 16%, the second at 325°C with a weight loss of 41% and the third largest and blunt to 467°C with a weight loss of 91%. MS has two major peaks, the first at 273°C with a weight loss of 33% and the second at 414°C with a weight loss at 86%.

3.3. Extraction of the Lignocellulosic Components

Lignocellulosic biomass is one of the most abundant renewable resources on earth, and certainly one of the least expensive. Its thermochemical conversion for combustible use would make it possible to meet the energy needs, hitherto covered mainly by petroleum products, while generating new opportunities for the agriculture in the world. The major components of dry lignocellulosic fibers are cellulose, hemicelluloses and lignin [19]. There are other minority products such as extractable by organic solvents. The chemical composition of the fibers depends on the source. According to our results, cellulose and lignin are the main components of the samples selected in this study. The shells have a high content of cellulose and lignin (Table 2) with more than 60% of the residues

content, which is a significant factor in the energy content of fuels. That is to say for a better fuel, it is necessary to have a large amount of cellulose and lignin because its thermal decomposition requires more energy with higher temperatures at the environments at 500°C.

3.4. Structure (ESEM)

Electronic scan microscopy makes it possible to obtain images of high-resolution of the surface of the sample. It is generally used to study morphology in 3D of surface or an object, but also to have an idea on the chemical composition by microanalysis X. PNS and MS have fragile and fibrous bodies. PLS has a rigid body and his pores are on different dimensions. The CNS has no pores, no fibers and a very rigid body. This morphological difference plays a very important part in energy valorization. From where we have differences on their heating value, which depends on the density of the matter. **Figure 4** illustrates the images

Table 2. Lignocellulosic composition of biomass residues.

Co-products	% Hemicellulose	% Cellulose	% Lignin	% Extractives
PNS	13.01	32.35	34.80	19.82
PLS	13.39	24.20	45.03	17.36
CNS	06.61	34.94	35.29	23.13
MS	18.96	39.67	11.40	29.95

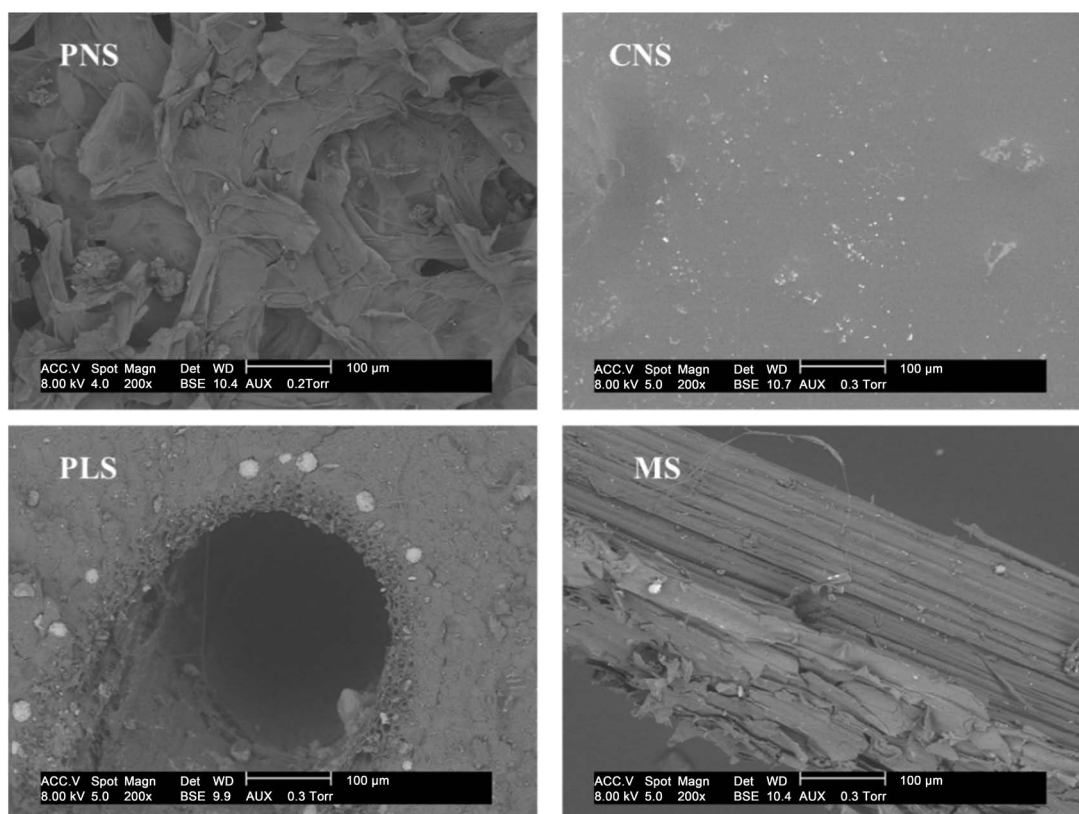


Figure 4. Morphology of surface by PNS, CNS, PLS and MS.

obtained by ESEM at 100 μm magnification for the four samples.

3.5. Production of Biochars

Biochar is a stable carbonaceous product made from by-products of animal or vegetable biomass, or organic waste. Biochar is produced under reducing thermal conditions and must have a well-defined and controlled quality. A wide range of organic raw materials can be used for the production of biochar, but for its manufacture it is necessary to respect the requirements of durability, *i.e.* not to use materials competitive with food or animal feed and plant nutrition. This is how pyrolysis and charcoal gases are obtained, the consistency of which corresponds to that of the wood. In the context of the diversification of energy resources in Senegal, biochar stands out as an alternative to charcoal in the context of preserving our environment. **Figure 5** shows the image of briquettes produced from PNS, CNS and MS, whose binder correspond to clay. But it must be understood that it is difficult to identify with the naked eye the briquettes for each residues type.

4. Conclusion

In this study the thermogravimetric analysis used allowed us to understand the thermal behavior of the samples at different atmospheres. It can be said that the thermal efficiency of the chars is higher than that of the raw biomass because the chars have the highest calorific value. These values varied from 16 $\text{MJ}\cdot\text{kg}^{-1}$ to 19 $\text{MJ}\cdot\text{kg}^{-1}$ for the raw biomass and from 24 $\text{MJ}\cdot\text{kg}^{-1}$ to 30 $\text{MJ}\cdot\text{kg}^{-1}$ by chars. The calorific value strongly depends on the carbon content which is directly related to the pseudo-component content. Cellulose composition, which is a very rich carbon skeleton, varies from 32.35%, 24.20%, 34.94% and 39.67% for PNS, PLS, CNS and MS. However, it can also be deduced that their chemical composition depends strongly on the nature and origin of the sample. So this study will allow us to characterize the fuel briquettes obtained from the residues of biomass. These residues therefore exhibit good thermal behavior; it's necessary to study the different possible emissions during combustion. The characterization of the oil (tars) produced would be very important for the rest of the work aimed at the manufactured of fuel briquettes (or biochars). It would also be important to determine the energy efficiency of these biofuels in the different types of improved stoves used at the national level.



Figure 5. Image of fuel briquettes of PNS, CNS, PLS and MS.

Acknowledgements

This work is supported by:

- Assane Seck University of Ziguinchor;
- French Cooperation Scholarship at French Embassy in Senegal.

Conflicts of Interest

The authors declare no conflicts of interest regarding the publication of this paper.

References

- [1] Yang, X., Choi, H.S., Park, C. and Kim, S.W. (2015) Current States and Prospects of Organic Waste Utilization for Biorefineries. *Renewable and Sustainable Energy Reviews*, **49**, 335-349. <https://doi.org/10.1016/j.rser.2015.04.114>
- [2] Liu, Z., Jiang, Z., Fei, B. and Liu, X. (2013) Thermal Decomposition Characteristics of Chinese Fir. *BioResources*, **8**, 5014-5024. <https://doi.org/10.15376/biores.8.4.5014-5024>
- [3] Sharma, A., Pareek, V. and Zhang, D. (2015) Biomass Pyrolysis—A Review of Modelling, Process Parameters and Catalytic Studies. *Renewable and Sustainable Energy Reviews*, **50**, 1081-1096. <https://doi.org/10.1016/j.rser.2015.04.193>
- [4] PAM (2014) Analyse Globale de la Vulnérabilité, de la Sécurité Alimentaire et de la Nutrition (AGVSAN) Sénégal. 1-96.
- [5] Burhenne, L., Messmer, J., Aicher, T. and Laborie, M.P. (2013) The Effect of the Biomass Components Lignin, Cellulose and Hemicellulose on TGA and Fixed Bed Pyrolysis. *Journal of Analytical and Applied Pyrolysis*, **101**, 177-184. <https://doi.org/10.1016/j.jaap.2013.01.012>
- [6] Seo, D.K., Park, S.S., Hwang, J. and Yu, T.U. (2010) Study of the Pyrolysis of Biomass Using Thermo-Gravimetric Analysis (TGA) and Concentration Measurements of the Evolved Species. *Journal of Analytical and Applied Pyrolysis*, **89**, 66-73. <https://doi.org/10.1016/j.jaap.2010.05.008>
- [7] Martens, D.A. and Loeffelmann, K.L. (2002) Improved Accounting of Carbohydrate Carbon from Plants and Soils. *Soil Biology and Biochemistry*, **34**, 1393-1399. [https://doi.org/10.1016/S0038-0717\(02\)00082-2](https://doi.org/10.1016/S0038-0717(02)00082-2)
- [8] Demirbas, A. (2005) Potential Applications of Renewable Energy Sources, Biomass Combustion Problems in Boiler Power Systems and Combustion Related Environmental Issues. *Progress in Energy and Combustion Science*, **31**, 171-192. <https://doi.org/10.1016/j.pecs.2005.02.002>
- [9] Qin, K. and Thunman, H. (2015) Diversity of Chemical Composition and Combustion Reactivity of Various Biomass Fuels. *Fuel*, **147**, 161-169. <https://doi.org/10.1016/j.fuel.2015.01.047>
- [10] Liu, Z. and Han, G. (2015) Production of Solid Fuel Biochar from Waste Biomass by Low Temperature Pyrolysis. *Fuel*, **158**, 159-165. <https://doi.org/10.1016/j.fuel.2015.05.032>
- [11] Binici, H. and Aksogan, O. (2017) Insulation Material Production from Onion Skin and Peanut Shell Fibres, Fly Ash, Pumice, Perlite, Barite, Cement and Gypsum. *Materials Today Communications*, **10**, 14-24. <https://doi.org/10.1016/j.mtcomm.2016.09.004>

- [12] Yang, H., Yan, R., Chen, H., Lee, D.H. and Zheng, C. (2007) Characteristics of Hem-cellulose, Cellulose and Lignin Pyrolysis. *Fuel*, **86**, 1781-1788. <https://doi.org/10.1016/j.fuel.2006.12.013>
- [13] Rousset, P., Turner, I., Donnot, A. and Perré, P. (2006) Choix d'un modèle de pyrolyse ménagée du bois à l'échelle de la microparticule en vue de la modélisation macroscopique. *Annals of Forest Science*, **63**, 213-229. <https://doi.org/10.1051/forest:2005113>
- [14] Klass, D. (1998) Thermal Conversion: Pyrolysis and Liquefaction. In: Klass, D.L., Ed., *Biomass for Renewable Energy, Fuels, and Chemicals*, Elsevier, Amsterdam, 225-269. <https://doi.org/10.1016/B978-012410950-6/50011-8>
- [15] Shafizadeh, F. (1982) Introduction to Pyrolysis of Biomass. *Journal of Analytical and Applied Pyrolysis*, **3**, 283-305. [https://doi.org/10.1016/0165-2370\(82\)80017-X](https://doi.org/10.1016/0165-2370(82)80017-X)
- [16] Tsamba, A.J., Yang, W. and Blasiak, W. (2006) Pyrolysis Characteristics and Global Kinetics of Coconut and Cashew Nut Shells. *Fuel Processing Technology*, **87**, 523-530. <https://doi.org/10.1016/j.fuproc.2005.12.002>
- [17] Jeguirim, M., Bikai, J., Elmay, Y., Limousy, L. and Njeugna, E. (2014) Thermal Characterization and Pyrolysis Kinetics of Tropical Biomass Feedstocks for Energy Recovery. *Energy for Sustainable Development*, **23**, 188-193. <https://doi.org/10.1016/j.esd.2014.09.009>
- [18] Zhu, G., Zhu, X., Xiao, Z., Zhou, R., Zhu, Y. and Wan, X. (2014) Kinetics of Peanut Shell Pyrolysis and Hydrolysis in Subcritical Water. *Journal of Material Cycles and Waste Management*, **16**, 546-556. <https://doi.org/10.1007/s10163-013-0209-7>
- [19] Yaman, S. (2004) Pyrolysis of Biomass to Produce Fuels and Chemical Feedstocks. *Energy Conversion and Management*, **45**, 651-671. [https://doi.org/10.1016/S0196-8904\(03\)00177-8](https://doi.org/10.1016/S0196-8904(03)00177-8)