

A realized *Tuber magnatum* niche in the upper Sinni area (South Italy)

Giovanni Figliuolo, Giovanna Trupo, Stefania Mang

Dipartimento delle Culture Europee e del Mediterraneo (DICEM), Università degli Studi della Basilicata, Matera, Italy
Email: giovanni.figliuolo@unibas.it

Received 7 January 2013; revised 20 February 2013; accepted 1 May 2013

Copyright © 2013 Giovanni Figliuolo *et al.* This is an open access article distributed under the Creative Commons Attribution License, which permits unrestricted use, distribution, and reproduction in any medium, provided the original work is properly cited.

ABSTRACT

A realized *Tuber magnatum* niche, in the upper Sinni area (Serrapotamo, south Italy), was studied using geographic information system, direct *in situ* survey and genetic diversity at DNA marker loci. Truffières were north facing, associated with a fine loamy-sandy soil bearing high carbonate content over a conglomerate bead-rock substrate. Target area is located in Pavari's cold and medium-cold *Lauretum* phytoclimatic belts. Ascoma genomic DNA was analyzed and ITS sequences, microsatellites (MA2, MA4 and MA7), along with M13 minisatellite loci, did show low heterozygosity ($H_E = 0.153$). Serrapotamo genotypes did not express localized markers when compared with Piemonte (north Italy) genetic material. ITS marker, monomorphic within *T. magnatum*, was efficient at distinguishing *T. borchii* in a mixture of both. Serrapotamo niche represents a unique *T. magnatum* diversity spot in the southernmost side of the Mediterranean region. Maintaining Serrapotamo *T. magnatum* diversity by undertaking conservation measures is advised.

Keywords: Genetic Diversity; Conservation; Niche; White Truffle

1. INTRODUCTION

The range of favorable environmental conditions under which an organism can survive and reproduce itself (fundamental niche) can be predicted for the most important wood tree and domesticated crop species [1-3]. Nonetheless, because of the combination of negative (e.g. species competition, dispersal constraints, etc.) with positive interactions (e.g. symbiosis), the realized niche [4], for a given species, can be more or less extended than the predicted one [2]. Genetic variation will ensure

species resilience and persistence within a changing environment [5]. The knowledge of hypogean mushroom species that live in symbiosis with the surface roots of many plant species, collectively known as truffles, would be enhanced by integrating the niche concept and genetic diversity data. Niche modeling can improve the management of both natural and artificial truffières. The niche concept has been used primarily for *Tuber melanosporum* Vitt. (Périgord black) and subsequently for less important species (*T. aestivum* Vitt., *T. brumale* var. *moschatum* Ferry, *T. macrosporum* Vitt., *T. borchii* Vitt. and *T. mesentericum* Vitt.) whose environmental optimal growing conditions (e.g. soil, climate and vegetation) show a wider range of variation than the more specialist *T. magnatum* Pico. Artificial truffières are dictated by validated protocols of plant inoculation, cultivation and truffle harvesting with trained dogs [6]. In contrast, predicting *T. magnatum* fundamental niche is not so far possible. Growing areas are not fully known while ecological and genetic baseline data are often insufficient. *T. magnatum*, the Italian white truffle (“tartufo bianco pregiato”), is one of the top most delicacies in the culinary list. In the “good” years *T. magnatum* price oscillates between 1200 and 2500 €/Kg, but it can rise up to 3000 or 4000 €/Kg in years with difficult environmental conditions. Truffle market involves about 400 millions of euro and hundreds of harvesters holding a regular license [7].

T. magnatum ascocarps are harvested from very localized natural or quasi-natural ecosystems mapped in Italy [8,9], Croatia [10], Slovenia [9,11], Ticino Canton [8], Serbia and Hungary [12]. Italy is the main producer of “tartufo bianco pregiato”. Surprisingly, *T. magnatum* producing areas are reported as located in central and northern Italy and only “rarely” south of Umbria [8,9]. For the first time Pomarico *et al.* [13] brought to light Basilicata as the southern Italian Region rich in *Tuber* species. Among the edible species, *T. magnatum* is

common and locally distributed in “Serrapotamo”, an area connected with Pollino National Park [13]. Rubini *et al.* [9] assessed genetic distance of some *T. magnatum* specimens from Basilicata. Overall, genetic analyses supported a self-fertilization breeding system consistent with the estimates of the within and between population genetic diversity [9,11,13]. However, differentiation due to habitat fragmentation should not be excluded. Delineating geographic areas characterized by a suitable climate for perennial symbiotic species is a consolidated method in forestry since the early 20th century [1]. The *Lauretum* cold belt, associated with *T. magnatum* distribution [13], requires an annual mean temperature from 12°C to 17°C, a temperature higher than 3°C in the coldest month and the average of the yearly minimum temperatures higher than -9°C [1]. When phytoclimatic conditions are met, geological maps represent an excellent additional tool to identify truffle production areas given that suitable soils (regolithic or residual) depend on the bed-rock type [14]. *T. magnatum*, whose mycelium is more widespread than can be inferred from the truffles and ectomycorrhiza distribution [15], prefers alkaline, moist, very well drained, and aerated soil [10,16]. In opposite, assessing soil micro-flora composition and prevalence is difficult; α -Proteobacteria is the most represented bacterial component, associated with the ascoma [17].

Although artificial mycorrhization of plant roots with *T. magnatum* ascospores is feasible [18,19], rarely massive ascomata productions have been reported in artificial plantations. Thus, the actual marketed ascomata are from natural or semi-natural realized niches. Expert harvesters are aware that overexploitation in conjunction with climatic impacts will produce quick *T. magnatum* genetic erosion. The ascoma intrinsic value depends on its authenticity, freshness, optimal readiness, fragrance, size, shape regularity, integrity and weight. Truffles from less important species (e.g. *T. borchii*) can be visually confused with *T. magnatum*. Furthermore, *T. borchii*, as a generalist species, is more abundant and can be sympatric to *T. magnatum*. In south Italy, Greece and Turkey *T. borchii* is ripening earlier than February-March. It follows that late-ripening *T. magnatum* ascocarps can be phenotypically confused with earlier-ripening *T. borchii*. Ecologic niche studies using geographic information system integrated with molecular marker technology and *in situ* monitoring are appropriate to carry out preliminary assessment of areas suited to *T. magnatum* conservation.

We attempted to promote *in situ* conservation of such a magnificent gift of the nature by characterizing one of the most important producing niches in south Italy and assessing its level of genetic diversity.

2. MATERIALS AND METHODS

2.1. Biological Sample

Fifty-three *T. magnatum* specimens (whole ascocarp or a fragment of it) were collected with the help of trained dogs, in different sites from natural or quasi-natural truffle fields located in the territory of the following municipalities (Serrapotamo area): Chiaromonte, Calvera, Castronuovo, Fardella, Francavilla S., Teana, Carbone, Episcopia and S. Chirico R. Sampling sites are mostly included within the Pollino National Park. Eight ascomata from Montemagno and Mombercelli d’Asti (Piemonte) were used as out-group (**Table 1**). As reference, three different species (*T. borchii*, *T. mesentericum* and *T. brumale*) were used in molecular analyses (**Table 1**).

2.2. DNA Analysis

Tissue scrap (0.25 - 1 g), from each ascoma, was cleaned with distilled water to eliminate soil residues, before total genomic DNA extraction. The collection (No = 54) was pre-screened with the ITS molecular fragment which allows easily the distinction of different species, including *T. borchii* from *T. magnatum*. *T. borchii* produced a lower molecular weight band (~560 bp) in comparison with *T. magnatum* (~660 bp) (**Table 1**). *T. magnatum* total genomic DNA, according to the cited Authors’ protocol [20-23] with minor laboratory-specific modifications, was used to screen the following different marker types:

- Minisatellite M13 using the universal primer M13 (GAGGGTGGCGGTTCT) [20];
- Three microsatellite loci (MA2, MA4, MA7) [21];
- ITS1 (5’TCCGTAGGTGAACCTGCGG-3’) and ITS4 (5’TCCTCCGCTTATTGATATGC3’) universal primers [22];
- ITS sequence of seven specimens from Piemonte and seven from different Basilicata sampling sites was obtained throughout direct amplicon sequencing [23].

ITS sequences were compared using the NCBI online standard Basic Local Alignment Search Tool (BlastN).

Table 1. Truffle DNA specimens from different ascomata analyzed with molecular markers along with ITS fragment discriminating different species.

Species	No ascomata (origin)	ITS1-2 fragment (bp)
<i>T. magnatum</i>	8 (Piemonte)	660
	53 (Basilicata)	660
<i>T. borchii</i>	2 (Basilicata)	560
<i>T. brumale</i> var. <i>moscatum</i>	2 (Basilicata)	900
<i>T. mesentericum</i>	2 (Basilicata)	720

2.3. Genetic Data Analysis

Genetic diversity was assessed using the expected heterozygosity (H_E) calculated as $H_E = 1 - (p^2 + q^2)$, where for haploid binary data, p is the frequency of the “present” band and $q = 1 - p$ the frequency of the “absent” band [24]. Genetic profiles were analyzed with Nei’s genetic distance [25] to generate a distance matrix with all pair-wise comparisons used as input for Principal Coordinates Analysis (**Figure 1**) [26].

2.4. Ecologic Characterization

Map layers for geology, soil [27], vegetation [28], bioclimate [29], and truffle-sampling sites were overlaid to find associations between macro-ecologic sources of variation and *T. magnatum* harvesting sites (**Figure 2**). In addition, on site survey was carried out to assess flora and vegetation. Vegetation was characterized during the truffle search by scoring species dominance and distribution pattern, using as sampling unit a representative area of about 1 hectare. About 132 Km² of the investigated territory included producing sites. Using either the world climate database at 30 arc second spatial resolution (~750 m) (<http://www.worldclim.org/>) or the average

precipitation and temperature values from local weather stations reported in Cantore *et al.* [29] were derived climate data. Bioclimatic variables represent annual temperature and precipitation trends, seasonality indices (e.g. annual range in temperature and precipitation) and extreme or limiting environmental factors (e.g. temperature of the coldest and warmest month, and precipitation of

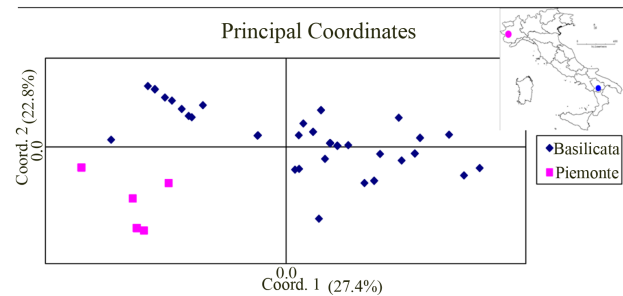


Figure 1. Genetic relationships among 61 *T. magnatum* ascomata from Basilicata (♦ No = 53) and Piedmont (■ No = 8) detected using minisatellite (M13) and microsatellites (MA2, MA4, and MA7) loci. The first two coordinates explain 50.2% of the total variance. The two symbols represent genotypes with different geographical origin. Twenty-one observations are hidden.

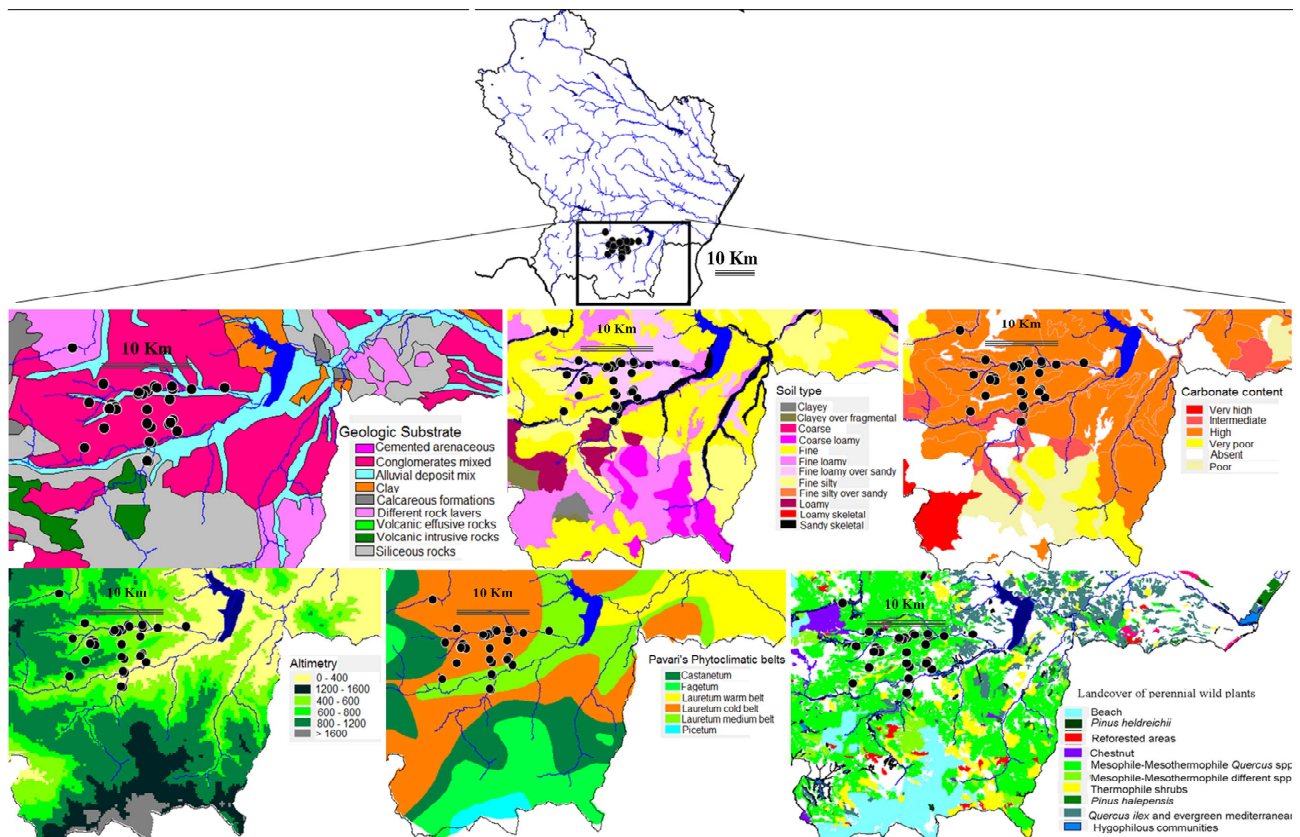


Figure 2. Ascomata sampling sites (●), relationships of *T. magnatum* vs geologic substrate, soil type, carbonate content, altimetry, phyto-climatic belts and land cover type specific to the ecologic niche of the upper Sinni catchment basin in the south-west side of Basilicata Region (IT).

the wet and dry quarters). The quarter is a period of three months (1/4 of the year) [30]. The average bioclimatic variables were estimated with the values of the climatic surface for each truffle harvesting area.

It was adopted a frame of five main phytoclimatic belts (*Lauretum*, *Castanetum*, *Fagetum*, *Picetum* and *Alpinetum*) the first time proposed by E. Mayr in the XIX century, adopted by Pavari [1] and updated for Basilicata Region by Cantore *et al.* [29] using the best local climatic record series. GIS analysis was conducted using Diva-Gis software (<http://www.diva-gis.org/>).

3. RESULTS

3.1. *T. magnatum* Genetic Diversity

Define abbreviations and acronyms the first time they Mini and microsatellites loci were polymorphic (Table 2). Minisatellite M13 marker produced 13 polymorphic fragments followed by microsatellites MA2, MA4, and MA7 with three or four polymorphic fragments. *T. magnatum* overall expected heterozygosity was $H_E = 0.153$. Piemonte sample showed $H_E = 0.148$ and Basilicata $H_E = 0.158$. Genetic distances within sub-group were lower than distance between sub-groups. Scatter diagram of first and second canonical variables shows a wide variation of Basilicata gene pool without any neat distinction from Piedmont genetic material (Figure 1). Two main interconnected genetic groups, along the first canonical variable, can be distinguished in the Serrapotamo area. The first two main components explain 27.4% and 22.8% of the variation, respectively. The second coordinate depicted a more specific discrimination of Piemonte ascomata. This type of specimen partition is due to frequency dependent alleles. Population specific bands were not detected. Within Piemonte group 5 out of 8 specimens were genetically distinct and within Basilicata group 32 different ascomata genotypes out of 53 specimens were scored (Figure 1). Genetic discrimination makes it possible to infer that less than half genotypes

Table 2. Expected heterozygosity (H_E) in *Tuber magnatum* estimated with three different molecular markers.

No different fragments		Whole sample (No = 61)	Basilicata (No = 53)	Piemonte (No = 8)
Marker		H_E	H_E	H_E
ITS1/2	1	0.000	0.000	0.000
M13	13	0.201	0.184	0.219
MA2	4	0.156	0.063	0.250
MA4	4	0.097	0.193	0.000
MA7	3	0.117	0.234	0.000
All markers		0.153	0.158	0.148

(21 ascomata out of 53) probably share their parental primary hyphae with those of the genetically distinct ascomata. It follows that population size of genetically distinct primary hyphae, across the entire territory, should be below the critical size necessary to avoid the deleterious effects of random genetic drift.

3.2. Discrimination of *T. magnatum* vs *T. borchii*

ITS amplified fragment distinguished different *Tuber* species. More specifically, the lowest band (~560 bp) was noticed in *T. borchii*; *T. magnatum* showed ~660 bp band; *T. mesentericum* a higher band (~720 bp) and the highest one (~900 bp) was generated by *T. brumale* var. *moschatum* (Table 1).

Identifying cross-contamination of one *T. borchii* ascoma out of 54 ascomata, morphologically recognized as *T. magnatum*, was allowed by 560 bp band specific to *T. borchii*. ITS sequenced amplicons including internal transcribed spacer 1, partial sequence, 5.8S ribosomal RNA gene complete sequence and internal transcribed spacer 2 partial sequence of *T. magnatum* either from northern or southern origin did not show any sequence variation (GenBank No: JX087950, JX087951, JX087952, JX087953, JX087954, JX087955, JX087956, JX087957, JX087958, JX087959, JX087960, JX087961, JX087962).

3.3. Climate

The bioclimatic variables, here reported, based on temperatures and rainfall monthly values, can meaningful indicate the relationships between the studied area and its mild climate (Table 3 and Figure 3). *Lauretum* cold belt captures *T. magnatum* realized niche with few sites falling within the *Lauretum* medium belt (Figure 2). The third trimester (July, August and September) performs either as the driest or warmest quarter (Table 3 and Figure 3). In this period, precipitations are often the outcome of thunderstorms, while during the coldest quarter (January, February, and March) the snow can persist on the soil for one or more days. Furthermore minimum temperature of the coldest month (=3.16°C in January) will not coincide with the average of the annual minimum temperature (=−5.7°C), given that the minimums can also be captured by December and February (data not shown).

Temperature data recorded by weather stations from 1926 to 1984 in the target zone along with phytoclimatic Pavari's belt, retrieved from Cantore *et al.* [29] agree with data from the world database. By comparing climatic patterns of the upper Senni valley vs northern sites (Montemagno and Mombercelli d'Asti) (Table 3 and Figure 3) it is noticeable a slight shift from a Mediterra-

near climate to a slight Continental one. Both sites share highest precipitations in October and November, with evenly distributed annual mean temperatures, mean monthly temperature range, isothermality and temperature of the warmest month (July). Nonetheless, in Piemonte minimum temperature (January) can drop below 2°C (between 0.5°C and 1.1°C), winter is drier and, spring wetter than in Basilicata (**Table 3** and **Figure 3**).

3.4. Vegetation

T. magnatum is mainly associated with the *Lauretum* cold belt. Few sampling sites are included in *Lauretum* medium belt. Dogs did find ascomata within and between vegetation patches of mesophile-mesothermophile perennial plant species. The ecological niche was not impacted by human activities with the exception of traditional agriculture and low input forest management practices dictated by domestic owners. Perennial wild plants most likely associated with *T. magnatum* are: *Quercus pubescens* Willd., *Q. cerris* L., oak hybrids, *Populus canescens* (Aiton) Sm., *P. tremula* L., *P. alba* L., *Crataegus oxyacantha* L. and *Salix caprea* L. (**Table 4**). These findings were based on the

in situ perceptions (e.g. plant host root proximity to ascomata), not on scientific proofs (e.g. symbiosis histological evidence).

Overall, vegetation was not evenly distributed: linear formations (at the margins of cultivated fields or walking paths), forested patches composed of mesophile-mesothermophile trees (north faced slopes), mixed with dense thermophile shrubs (south, southeast faced slopes) were present. Perennial plant species richness was high at the collecting site (**Table 4**). Piemonte (Montemagno d'Asti) white truffles were associated with the following species: *Populus nigra* L., *P. alba* L., *P. tremula* L., *Quercus robur* L., *Salix alba* L. and *Tilia cordata* Mill. in moist soils and with few signs of anthropic activity [11]. Mature ascomata of *T. magnatum* can be harvested, in Basilicata, from mid September until the end of December. High species richness of commercially relevant truffles has been found in Serrapotamo niche: During the winter and early spring, *T. borchii* can be harvested; along with *T. magnatum* it grows, from November till March, *T. brumale* var. *moscatum* and, during the summer, *T. aestivum* (syn. *uncinatum* if harvested in autumn).

Table 3. Bioclimatic variables, from world climate database, specific to the target area of the upper Sinni catchment basin (Basilicata Region) and two areas of Montemagno and Mombercelli d'Asti located in Piedmont Region.

Bioclimatic Variable (Average)	Upper Sinni	Montemango d'Asti	Mombercelli d'Asti
1. Annual Mean Temp. (°C)	13.2	12.2	12.6
2. Mean Monthly Temp. Range (°C)	6.8	8.1	7.9
3. Isothermality (2/7) (×100)	29.4	28.8	28.5
4. Temp. Seasonality (STD × 100) (°C)	606.2	728.3	713.7
5. Max Temp. of Warmest Month (°C)	26.2	27.1	27.1
6. Min Temp. of Coldest Month (°C)	3.2	-1.1	-0.5
7. Temp. Annual Range (5 - 6) (°C)	23.1	28.2	27.6
8. Mean Temp. of Wettest Quarter (°C)	10.7	12.8	13.2
9. Mean Temp. of Driest Quarter (°C)	20.8	23.1	21.2
10. Mean Temp. of Warmest Quarter (°C)	20.9	21.1	21.2
11. Mean Temp. of Coldest Quarter (°C)	6.3	3.1	3.6
12. Annual Precipitation (mm)	768.7	816.0	798.0
13. Precipitation of Wettest Month (mm)	104.0	100.0	101.0
14. Precipitation of Driest Month (mm)	18.7	42.0	37.0
15. Precipitation Seasonality (CV)	43.4	27.9	28.6
16. Precipitation of Wettest Quarter (mm)	293.5	252.0	253.0
17. Precipitation of Driest Quarter (mm)	84.3	149.0	153.0
18. Precipitation of Warmest Quarter (mm)	105.4	168.0	153.0
19. Precipitation of Coldest Quarter (mm)	259.4	149.0	154.0

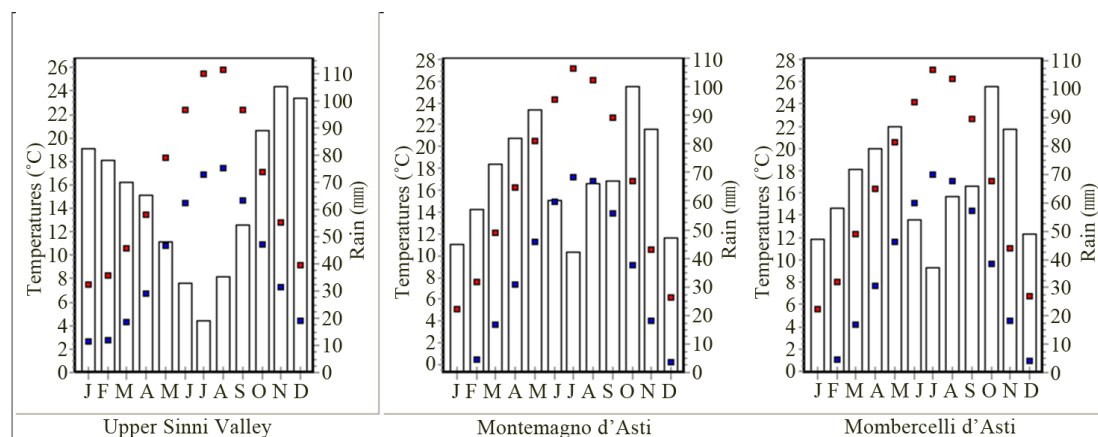


Figure 3. Minimum (■), maximum (■) temperatures (°C), and monthly precipitations (mm) (bar chart) specific to upper Sinni catchment basin (Basilicata Region), Montemagno and Mombercelli d'Asti (Piemonte Region).

Table 4. Perennial plant species scored over a representative site within the area reported in **Figure 2**.

Species	Dominance and distribution
<i>Acer obtusatum</i> L.	Common and scattered
<i>Quercus pubescens</i> Willd.	Common and scattered
<i>Quercus cerris</i> L.	Common and scattered
<i>Ostrya carpinifolia</i> Scop.	Common and scattered
<i>Populus alba</i> L.	Common in groups
<i>Sorbus torminalis</i> L.	Common on the margins
<i>Fraxinus ornus</i> L.	Common on the margins
<i>Populus canescens</i> Aiton Sm.	Rare along drainage lines
<i>Alnus glutinosa</i> L.	Rare along drainage lines
<i>Quercus frainetto</i> Ten.	Rare and scattered
<i>Corylus avellana</i> L.	Rare and scattered
<i>Ulmus minor</i> Miller	Rare and scattered
<i>Sorbus aucuparia</i> L.	Rare on the margins
<i>Viburnum tinus</i> L.	Rare and localized
<i>Cornus sanguinea</i> L.	Common and continuous
<i>Euonymus europaeus</i> L.	Common and continuous
<i>Coronilla</i> spp.	Common on the margins
<i>Ligustrum vulgare</i> L.	Rare and continuous
<i>Clematis vitalba</i> L.	Rare and localized
<i>Hedera helix</i> L.	Rare and scattered
<i>Crataegus oxyacantha</i> L.	Rare margins
<i>Pteridium aquilinum</i> L.	Common on the margins
<i>Ruscus aculeatus</i> L.	Common and scattered
<i>Rubia peregrina</i> L.	Rare and scattered
<i>Daphne laureola</i> L.	Rare and scattered

Rel. No 1-01/11/2008; Average slope %: 15%; Exposition: North; Geologic substrate: Conglomerates; Soil type: Fine silty; Altitude: 531 m; Area size: 1 Ha.

3.5. Geology and Pedology

T. magnatum ascomata have been found in soils having a fine loamy structure over sandy, with high carbonate content. The geological substrate was of conglomerates made of fine cement mixing round stones of different size.

3.6. Landscape

Serrapotamo territory produces a significant quantity of *T. magnatum* ascomata. *T. magnatum* is distributed across a variable landscape (~150 Km²) buffering Serrapotamo creek and upper Sinni catchment basin in Basilicata (9992.24 km²) (**Figure 2**). Overall, the area has a variable geomorphology and a difficult accessibility. Mountains (from 1000 to 2000 m) on the north-north-west side protect the target area from the Atlantic and northern storms, while Pollino range acts as a barrier against dry winds coming from south. Producing truffle sites were all located on northern faced lands and at different altitudes (from 350 to 750 m) (**Figure 2**). The regional main area is excluded from the details of **Figure 2** because do not meet the whole set of environmental associations found in Serrapotamo area with the exception of few point areas (data not shown). Although soil, geology, and climate are suited in north-west, side of the Region, at present the ancient natural ecosystem has been replaced by agro-ecosystems.

4. CONCLUSIONS

Accurate niche modeling for *T. magnatum*, given the unsatisfactory available ecological and genetic data, would be unrealistic. At present, we can provide no more than management guidelines. The effect of basic a-biotic factors such as climate, soil type, pedo-genetic substrate as well as the effect of radiation, electric potential, chemical stimuli and, CO₂ vs O₂ or N₂ soil content on spe-

cies life cycle is still not completely clarified [31]. The expert harvesters ask assessing the role of absolute minimum and maximum soil temperatures together with the effect of snow and hailstorms. Symbiotic vs competition relationships among biotic factors, especially bacteria, may play a key role [17]. The lack of ascomata production from successful *T. magnatum* mycorrhized plants does not provide any insight about “species × environment” interaction. The role of genetic diversity on sexual reproduction and mycorrhization, as well as the evolutionary responses to environmental and demographic changes need to be investigated. Dog is *condicio sine qua non* for all truffle-related activities, included science. Monitoring is difficult, also in the computer age, given that biosensors are not yet able to mimic dog biological capabilities in scents distinction [32]. For a diagnostic screening it is necessary the isolation of sub-population specific markers. In opposite, at inter-specific level, *T. borchii* can be efficiently discriminated from *T. magantum* using ITS marker. With such easy to use marker, we estimated a contamination level of one *T. borchii* ascoma out of 64 ascomata. Such type of mixture could be problematic for *inocula* preparation (in mycorrhization nurseries) since *T. borchii* is more competitive than *T. magnatum* in plant root mycorrhization [19].

The assessed not optimal heterozygosity is consistent with the reproduction system of an inbreeder (homothallic fungi) rather than out-breeder (heterothallic fungi). However, we do not exclude that *T. magnatum* could be an out-breeder affected by genetic drift. Habitat isolation and locally low effective population size could have lead to inbreeding. Genetic diversity (H_E) at three microsatellites loci (MA2, MA4, and MA7) agreed with that reported by Rubini *et al.* [21] except for the lower heterozygosity here detected at MA4 locus. It is clear that genetic diversity, due to frequency dependant alleles, is geographically structured. According to the migration model from south to north (after the last glaciation) [33], we expect genetic richness in southern areas, for both host plants and fungi. It follows that we should consider Serrapotamo niche as a key site for *T. magantum* conservation.

Almost all the realized *T. magnatum* niches are over-exploited. Site-specific anthropogenic impacts are mainly due to soil compaction by tracks, systematic silviculture and loss of traditional land cover management. Nonetheless, across the studied Region, in the last two decades, following boars’ population size increase, *Tuber* spp. dispersal ability should be higher than in the past. Fungal mycelium does not tolerate soil compaction and aridification. *Tuber* ascomata were rarely found in woods impacted by systematic silviculture. In addition, the current climatic change probably will promote altitudinal and latitudinal shift of the niche. Populations from low to medium density, even if they exhibit adaptive evolution,

after abrupt environmental change, have high extinction probability [34]. Conservation measures, such as the efforts to increase size, quality, and connectivity of species’ habitat, could at least reach the goal to maintain (if not to increase) genetic diversity and, therefore, the adaptive potential within and among truffle beads.

Genetic diversity and localized distribution, discovered in this case-study, are basic conditions for planning *T. magnatum* conservation in one of the southernmost distribution area of the species.

Management Guidelines

Based on this preliminary study, at the present, it is possible to outline the following general statements:

- Keep local climate uniform by managing appropriately the land-cover in order to decrease the daily variance for humidity and temperature;
- Maintain linear high trunk tree formations (preferably host plants), north-south oriented, because produce shadow, perform as a barrier against winds and reduce topsoil vapor-transpiration;
- Avoid systematic forest management (e.g. coppicing, thinning and systematic cuttings);
- Apply very selective cuttings and protect symbiont species;
- Manage coppice vs high trunk with gradualism, year after year. Reduce the number of shoots without damaging the source-sink plant equilibrium;
- Remove, without reducing species-richness, shrubs in excess that belong to not symbiotic plant species;
- Maintain an open wood structure, with ground protected by the tree shadow;
- Allow canopy development to ensure a fresh under-canopy climate, especially during the third quarter;
- Remove and prevent bulk of raw organic matter, such as fallen wood;
- Do not compact soil with machineries;
- Increase, nearby productive symbionts (e.g. poplar, willow, etc.), the number of host plants using clonal propagation;
- Monitor truffle production and other measurable parameters.

5. ACKNOWLEDGEMENTS

CNR (Istituto per la Protezione delle Piante, Torino) kindly provided Piemonte DNA specimens. We are deeply grateful to local experts who assisted our field survey and to Università degli Studi della Basilicata for its institutional support. This paper is dedicated to the honor of Fly and to the memory of Lola.

REFERENCES

- [1] Pavari, A. (1916) Preliminary assessment of the cultiva-

- tion of exotic forestry species in Italy. General section. *Annales of the Regio Istituto Superiore Forestale Nazionale*, Florence, Italy, 1-221.
- [2] Puliam, H.R. (2000) On the relationship between niche and distribution. *Ecology Letters*, **3**, 349-361. [doi:10.1046/j.1461-0248.2000.00143.x](https://doi.org/10.1046/j.1461-0248.2000.00143.x)
- [3] Jones, P.G., Diaz, W. and Cock, J.H. (2005) Homologue: A computer system for identifying similar environments throughout the tropical world. Version beta a.0. Centro Internacional de Agricultura Tropical (CIAT), Cali.
- [4] Hutchinson, G.E. (1957) Concluding remarks. *Cold Spring Harbor Symposia on Quantitative Biology*, **22**, 415-427. [doi:10.1101/SQB.1957.022.01.039](https://doi.org/10.1101/SQB.1957.022.01.039)
- [5] Reed, E.T., Schindler, D.E. and Waples, R.S. (2010) Interacting effects of phenotypic plasticity and evolution on population persistence in a changing climate. *Conservation Biology*, **25**, 56-63. [doi:10.1111/j.1523-1739.2010.01552.x](https://doi.org/10.1111/j.1523-1739.2010.01552.x)
- [6] Hall, I.R., Brown, G.T. and Zambonelli, A. (2007) Taming the truffle: The history, lore, and science of the ultimate mushroom. Timber Press, Portland, 304 pp.
- [7] Ciani, S. (2008) White truffle, the good sleeping in the forest. Origine. Special Issue of the Agric. Informer. Year III, September-October 2008, 30-34.
- [8] Hall, I.R., Zambonelli, A. and Primavera, F. (1998) Ectomycorrhizal fungi with edible ascomata. 3. *Tuber magnatum*, Tuberales. *Economic Botany*, **52**, 191-200. [doi:10.1007/BF02861209](https://doi.org/10.1007/BF02861209)
- [9] Rubini, A., Paolocci, F., Riccioni, C., Vendramin, G. and Arcioni, S. (2005) Genetic and phylogeographic structures of the symbiotic fungus *Tuber magnatum*. *Environmental Microbiology*, **71**, 6584-6589. [doi:10.1128/AEM.71.11.6584-6589.2005](https://doi.org/10.1128/AEM.71.11.6584-6589.2005)
- [10] Bragato, G., Vignozzi, N., Pellegrini, S. and Sladonja, B. (2010) Physical characteristics of the soil environment suitable for *Tuber magnatum* production in fluvial landscapes. *Plant Soil*, **329**, 51-63. [doi:10.1007/s11104-009-0133-8](https://doi.org/10.1007/s11104-009-0133-8)
- [11] Mello, A., Murat, C., Vizzini, A., Gavazza, A. and Bonfante, P. (2005) *Tuber magnatum* Pico, a species of limited geographical distribution: Its genetic diversity inside and outside a truffle ground. *Environmental Microbiology*, **7**, 55-65. [doi:10.1111/j.1462-2920.2004.00678.x](https://doi.org/10.1111/j.1462-2920.2004.00678.x)
- [12] Bratek, Z., Gógán, A., Halász, K., Bagi, I., Erdei, V. and Bujáki, G. (2003). The northernmost habitats of *Tuber magnatum* known from Hungary. <http://www.kert.szie.hu/resources/217.pdf>
- [13] Pomarico, M., Figliuolo, G. and Rana, G.L. (2007) *Tuber* spp. Biodiversity in one of the southernmost European distribution areas. *Biodiversity Conservation*, **16**, 3447-3461. [doi:10.1007/s10531-006-9013-1](https://doi.org/10.1007/s10531-006-9013-1)
- [14] Costa, M. (2006) Geological, geomorphologic traits and truffle genesis. *Italian Journal of Geosciences*, **6**, 229-233.
- [15] Zampieri, E., Murat, C., Cagnasso, M., Bonfante, P. and Mello, A. (2010) Soil analysis reveals the presence of an extended mycelial network in a *Tuber magnatum* truffle ground. *FEMS Microbiology Ecology*, **71**, 43-49. [doi:10.1111/j.1574-6941.2009.00783.x](https://doi.org/10.1111/j.1574-6941.2009.00783.x)
- [16] Rondelli, F. (1998) Truffle bearing soils in the Central Apennine: Observation of hierarchic structures of the pedologic traits. *Monti e Boschi*, **5**, 44-49.
- [17] Barbieri, E., Guidi, C., Bertaux, J., Frey-Klett, P., Garbaye, J., Ceccaroli, P., Saltarelli, R., Zambonelli, A. and Stocchi, V. (2007) Occurrence and diversity of bacterial communities in *Tuber magnatum* during truffle maturation. *Environmental Microbiology*, **9**, 2234-2246. [doi:10.1111/j.1462-2920.2007.01338.x](https://doi.org/10.1111/j.1462-2920.2007.01338.x)
- [18] Granetti, B. (1987) Mycorrhization of some *Salix* species with *Tuber magnatum* Pico. *Annali della Facoltà di Agraria*, **41**, 875-888.
- [19] Bencivenga, M., dal Savio, D. and Venanzi, G. (1990) Development of symbiotic plants and mycorrhiza evaluation in a truffle bed of *Tuber magnatum* Pico after four years since plantation. *Annali della Facoltà di Agraria*, **43**, 817-828.
- [20] Latouche, G.N., Daniel, H.M., Lee, O.C., Mitchell, T.G., Sorrel, T.C. and Meyer, W. (1997) Comparison of use of phenotypic and genotypic characteristics for identification of species of the anamorph genus *Candida* and related teleomorph yeast species. *Journal of Clinical Microbiology*, **35**, 3171-3180.
- [21] Rubini, A., Topini, F., Riccioni, C., Paolocci, F. and Arcioni, S. (2004) Isolation and characterization of polymorphic microsatellite in white truffle (*Tuber magnatum*). *Molecular Ecology Notes*, **4**, 116-118. [doi:10.1111/j.1471-8286.2004.00587.x](https://doi.org/10.1111/j.1471-8286.2004.00587.x)
- [22] White, T.J., Bruns, T., Lee, S. and Taylor, J. (1990) Amplification and direct sequencing of fungal ribosomal RNA genes for phylogenetics. In: Innis, M.A., Gelfand, D.H., Sninsky, J.J. and White, T.J., Eds., *PCR Protocols. A Guide to Methods and Applications*, Academic Press, San Diego, 315-332.
- [23] Mang, S.M. and Figliuolo, G. (2010). Species delimitation in *Pleurotus eryngii* species-complex inferred from ITS and EF-1 α gene sequences. *Mycology*, **1**, 269-280.
- [24] Weir, B.S. (1996) Genetic data analysis II. Sinauer Associates, Inc., Sunderland.
- [25] Nei, M. and Li, W.H. (1979) Mathematical model for studying genetic variation in terms of restriction endonucleases. *Proceedings of the National Academy of Sciences of the United States of America*, **76**, 5269-5273. [doi:10.1073/pnas.76.10.5269](https://doi.org/10.1073/pnas.76.10.5269)
- [26] Peakall, R. and Smouse, P.E. (2006) GENALEX 6: Genetic analysis in Excel. Population genetic software for teaching and research. *Molecular Ecology Notes*, **6**, 288-295. [doi:10.1111/j.1471-8286.2005.01155.x](https://doi.org/10.1111/j.1471-8286.2005.01155.x)
- [27] Regione Basilicata (2003) Pedologic map of Basilicata Region. *Workshop on Pedologic Survey to Know, Safeguard and Valorise Basilicata Landscape and Agriculture*, 7 April 2003, Basilicata Region, Department Agriculture and Rural Development, 1-54.
- [28] Costantini, G., Bellotti, A., Mancino, G., Borghetti, M. and Ferrara, A. (2006) Basilicata forest map. Basilicata Region. Department Environment, Landscape and Sustainability Policies, INEA, Potenza.

- [29] Cantore, V., Iovino, F. and Pontecorvo, G. (1987) Climatic features and phytoclimatic zones of Basilicata. National Research Council (CNR), Institute of Ecology and Forest Hydrology, Rende, Cosenza,
- [30] Hijmans, R.J., Cameron, S.E., Parra, J.L., Jones, P.G., Jarvis, A. (2005) Very high resolution interpolated climate surfaces for global land areas. *International Journal of Climatology*, **25**, 1965-1978. [doi:10.1002/joc.1276](https://doi.org/10.1002/joc.1276)
- [31] Pacioni, G. and Comandini, O. (1999) Tuber. In: Cairney, J.W.G. and Chambers, S.M., Eds., *Ectomycorrhizal fungi. Key Genera in Profile*. Springer, Berlin, Heidelberg, 163-186. [doi:10.1007/978-3-662-06827-4_6](https://doi.org/10.1007/978-3-662-06827-4_6)
- [32] Habib, M.K. (2007) Controlled biological and biomimetic systems for landmine detection. *Biosensors and Bioelectronics*, **23**, 1-18. [doi:10.1016/j.bios.2007.05.005](https://doi.org/10.1016/j.bios.2007.05.005)
- [33] Murat, C., Diez, J., Luis, P., Delaruelle, C., Dupré, C., Chevalier, G., Bonfante, P. and Martin, F. (2004) Polymorphism at the ribosomal DNA ITS and its relation to postglacial re-colonization routes of the Perigord truffle *Tuber melanosporum*. *New Phytologist*, **164**, 401-411. [doi:10.1111/j.1469-8137.2004.01189.x](https://doi.org/10.1111/j.1469-8137.2004.01189.x)
- [34] Boulding, E.G. and Hay, T. (2001). Genetic and demographic parameters determining population persistence after a discrete change in the environment. *Heredity*, **86**, 313-332. [doi:10.1046/j.1365-2540.2001.00829.x](https://doi.org/10.1046/j.1365-2540.2001.00829.x)