

Natural Disaster Risk in Municipal Solid Waste Disposal Sites Using GIS: A Case Study in São Paulo State, Brazil

Victor Fernandez Nascimento^{1,2}, Anahi Chimini Sobral¹, Pedro R. Andrade¹, Nazli Yesiller², Jean Pierre Henry Balbaud Ometto¹

¹Earth System Science Center (CCST), National Institute for Space Research (INPE), São José dos Campos, Brazil

²Global Waste Research Institute (GWRI), California Polytechnic State University (Cal Poly), San Luis Obispo, CA, USA

Email: victor.nascimento@inpe.br, anahi.sobral@inpe.br, pedro.ribeiro@inpe.br, nyesille@calpoly.edu, jean.ometto@inpe.br

How to cite this paper: Nascimento, V.F., Sobral, A.C., Andrade, P.R., Yesiller, N. and Ometto, J.P.H.B. (2017) Natural Disaster Risk in Municipal Solid Waste Disposal Sites Using GIS: A Case Study in São Paulo State, Brazil. *Journal of Water Resource and Protection*, 9, 1213-1224.

<https://doi.org/10.4236/jwarp.2017.911079>

Received: August 22, 2017

Accepted: October 16, 2017

Published: October 19, 2017

Copyright © 2017 by authors and Scientific Research Publishing Inc.

This work is licensed under the Creative Commons Attribution International License (CC BY 4.0).

<http://creativecommons.org/licenses/by/4.0/>



Open Access

Abstract

Natural disasters and finding suitable areas to dispose of municipal solid waste (MSW) are two major global challenges, both of which have several influences in the water resources and are related to climatic change, especially in developing countries like Brazil. Currently the risk of natural disasters is not utilized in the process of locating areas to dispose of MSW. This study, using geographic information system (GIS), analyzed spatially the susceptibility for landslide and flooding hazards in MSW disposal sites in São Paulo state, Brazil. The results showed that more than 90% of sanitary and ditch landfills are located in null, very low and low hazard classes (P0, P1 and P2). However, in this remaining 10% of landfills we still have approximately 55% of the total municipal solid waste disposed into susceptible areas with middle, high and very high hazard classes (P3, P4 and P5). This shows that São Paulo MSW disposal sites need more attention and control to prevent the occurrence of landslide/flooding and consequently the mitigation of environmental, economic and social impacts. In addition, the use of GIS is proved to be an appropriate tool to carry out this type of analysis, so we recommend that the risk of natural disasters should be taken into consideration in the process of finding landfill areas. Mainly, because, there is a tendency for extreme weather events to increase causing more flood and landslide events and consequently contributing to water scarcity and water degradation.

Keywords

Landfills, Spatial Analysis, Susceptibility, Hazard, Landslides, Flood

1. Introduction

The Brazilian National Sanitation Policy establishes the principles for the provision of public sanitation services, such as water supply, sewage treatment and management of municipal solid waste (MSW) [1]. The proper disposal of solid waste is intrinsically linked to the preservation of the environment and public health [2]. It has been identified that the waste production in Brazil is growing in greater proportion than the population [3]. Thus, the proper final disposal of MSW is of great importance, because the environmental cost of inadequate provision is related to the contamination of soil, groundwater and atmosphere [4].

The Brazilian National Solid Waste Policy—PNRS (2010) establishes that just the untreatable solid waste must be disposed of in landfills, in order to minimize environmental impacts and prevent damage to public health [5]. According to PNRS the disposal of MSW in open dumps and uncontrolled landfills should have ended by the year 2014; however, this did not happen. About 3344 Brazilian cities still have their solid waste disposed of in inappropriate places [6]. The improper disposal of solid waste brings imminent danger to public health, besides being related to recurrent phenomena in Brazil, such as floods and landslides.

In Brazil, few landfills are properly managed, and the risks of natural disasters in these places are not taken into consideration. The problem gets worse when solid waste is disposed of in inappropriate places such as hillsides, due to the fact that the natural process of MSW decomposition causes instability on the ground surface. With the occurrence of heavy rainfall and human interventions, the soil becomes unstable and susceptible to landslides, which heightens the erosion and displacement of soil sediments in rivers, increasing the probability of flooding and consequently the population vulnerability to disaster risk [7].

According to the Brazilian National Civil Defense Policy, disasters are the result of damaging effects, which can be caused by natural or human processes on a vulnerable ecosystem, resulting in economic, social and environmental damage [8]. The intensity of the disaster depends on the magnitude of the event and vulnerability of the system. Natural disasters caused by floods and landslides are some of the main problems. Every year property and human life losses happen in several Brazilian cities [9].

Floods are environmental hydrometeorological problems that are derived from natural hazard phenomena [10]. The magnitude and frequency of these phenomena is a function of the distribution and intensity of precipitation, water infiltration, soil saturation and morphological/morphometric characteristics of the drainage basin [11]. The intensification of anthropogenic changes in the environment, such as soil sealing, rectification and siltation of watercourses, makes rainwater runoff in lowlands and valleys slower than runoff in natural conditions [12]. According to the Emergency Database—(EM-DAT), in 2014 the victims of natural disasters in the Americas tripled, compared to the average annual during 2004-2013. In Brazil, with only four floods throughout the year, there were 500

victims [13].

Land mass movements involve materials that cover the slopes surfaces, such as rocks, vegetation and soil. These processes are called landslides and occur in high land and mountainous regions, especially those where the climate is very wet, such as South and Southeast Brazil. Mass movements are natural processes that can be intensified by the indiscriminate growth of urban occupation in inappropriate places without land use planning [11].

Landslides are a major geomorphological risk and Brazil is among the top ten countries affected by this kind of natural disaster in the world. Under this circumstance, the decision makers need tools and instruments to know the risks in certain areas and, therefore, take preventative measures [14]. This study aims to identify the susceptibility of landslides and flooding hazard in municipal solid waste final disposal sites in the state of São Paulo, Brazil. It uses spatial analysis methods and statistics to consider classes of probability of these hazardous events.

2. Description of the Study Area

São Paulo state is the most populous Brazilian state, with approximately 44,396,484 inhabitants in 2015 living in an area of 248,222.362 km² [15]. São Paulo is also the biggest producer of municipal solid waste (MSW), generating 39 thousand tons per day [16] (Figure 1).

3. Methods

The materials used for the development of this study were flood and landslide hazard maps, published by the Environment Department of the State of São Paulo in partnership with the FUNCATE and the Geological Survey to identify the basic unit compartments of the physical environment [17].

To prepare the flood map, São Paulo (2014) calculated the flood hazard index using (Equation (1)):

$$P_{-INU} = 0.4 * (1 - SL) + 0.3 * DD + 0.3 * HS \quad (1)$$

where: *SL* = Slope, *DD* = Drainage Density, *HS* = Hydric Surplus.

To prepare the landslide map, São Paulo (2014) developed the landslide hazard index based on five equations for different slope scenarios (Equations (2)-(6)):

Scenario 1—Slope between 0° - 6°

$$P_{-ESC} = 0.8 * SL + 0.05 * TR + 0.05 * DD + 0.05 * HS + 0.05 * FI \quad (2)$$

Scenario 2—Slope between 6° - 12°

$$P_{-ESC} = 0.5 * SL + 0.125 * TR + 0.125 * DD + 0.125 * HS + 0.125 * FI \quad (3)$$

Scenario 3—Slope between 12° - 18°

$$P_{-ESC} = 0.2 * SL + 0.2 * TR + 0.2 * DD + 0.2 * HS + 0.2 * FI \quad (4)$$

Scenario 4—Slope between 18° - 24°

$$P_{-ESC} = 0.5 * SL + 0.125 * TR + 0.125 * DD + 0.125 * HS + 0.125 * FI \quad (5)$$

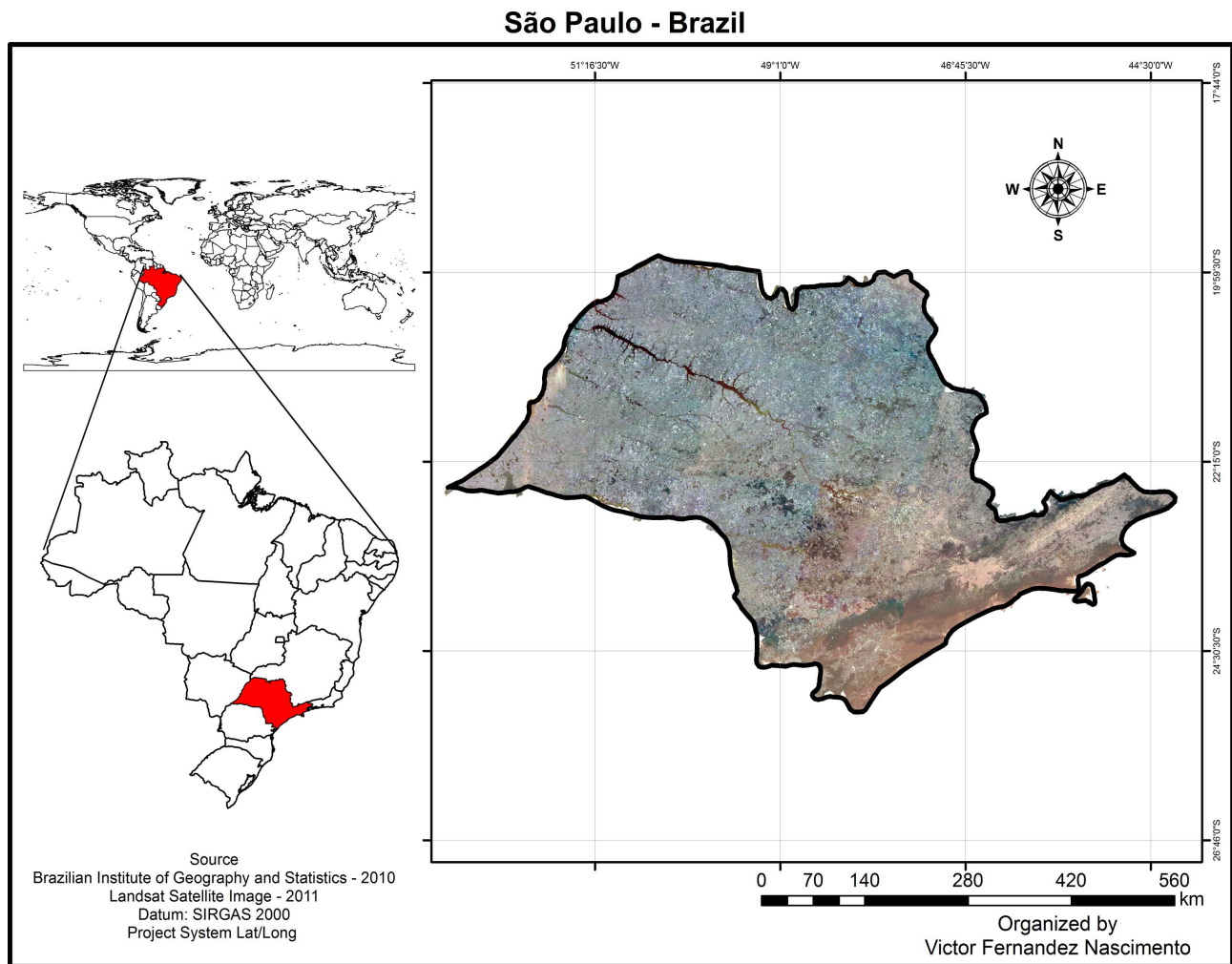


Figure 1. Map of the state of São Paulo, Brazil. The figure represents the location of Brazil in the globe and the São Paulo state location in Brazil.

Scenario 5—Slope upper than 24°

$$P_{-ESC} = 0.8 * SL + 0.05 * TR + 0.05 * DD + 0.05 * HS + 0.05 * FI \quad (6)$$

where: *SL* = Slope; *TR* = Temperature Ranges; *DD* = Drainage Density; *HS* = Hydric Surplus; *FI* = Foliation Intensity.

In the flood and landslide hazard maps, São Paulo (2014) divided the danger level into six classes P0 to P5, where P0 is a null probability and P5 is the maximum probability of the hazardous event occurring. The P0 class was set according to geomorphological criteria. For example, on the landslide hazard map the flat areas were classified as P0, likewise, the steep areas on the flood hazard map were classified as P0. The definition from the limits of P1 and P5 classes was set following the method of Natural Jenks breaks and were classified as follows: P1 (Very Low), P2 (Low), P3 (Medium), P4 (High) and P5 (Very High).

The geographical coordinates from the final disposal sites of municipal solid waste for the 645 municipalities in the state of São Paulo were available by CETESB in spreadsheets used for the assessment of Waste Quality Index (WQI), which is the basis for the annual Inventory of Solid Waste. Because some of São Paulo's

cities use consortia to dispose solid waste, there are currently 420 final MSW disposal sites cataloged and evaluated by CETESB in 2015.

After visual assessment through RapidEye satellite images for the years 2013 and 2014, provided by the Ministry of Environment (MMA), it was found that some of the waste disposal sites were dislocated. So the points were edited visually on the images to correct location errors, and the areas of the sites were defined.

The spatial analysis was performed with the ArcGIS 10.2 software, by overlaying the hazard maps (landslide and flood) and the disposal municipal solid waste areas assessed by CETESB. Thus, it was possible to conduct a spatial analysis to check where the landfills are included in each hazard class of landslide/flood maps and classified statistically how much municipal solid waste is disposed of in susceptible areas.

4. Results and Discussion

This section presents the spatial and statistical results for the municipal solid waste disposal sites in each class of flood and landslide hazard maps.

4.1. Landslide Hazard in Municipal Solid Waste Disposal Sites

In order to evaluate the landslide hazard susceptibility of municipal solid waste disposal sites in São Paulo state (**Figure 2**) we developed a spatial and statistical analysis for each hazard class.

It may be noted that the landfills on the Northwest are less susceptible to the danger of landslide than the ones on the Southeast, closer to the Mantiqueira/Mar mountain range. It is observed that 392 landfills are inserted in null, very low and low hazard landslide classes (P0, P1 and P2, respectively); six sanitary landfills and 11 ditch landfills¹ in the medium hazard landslide class (P3); three sanitary landfills and seven ditch landfills in the high landslide hazard class (P4) and only one sanitary landfill in a very high hazard landslide class (P5) (**Table 1**).

Table 1. Municipal solid waste disposal sites in the state of São Paulo according to hazard landslide class.

Landslide Hazard Class	Number of Ditch Landfills	Number of Sanitary Landfills	Ton of MSW/Disposed per Day
P0 + P1 + P2	313	79	19,257.54
P3	11	6	11,428.84
P4	7	3	8043.59
P5	0	1	150.79
Total	331	89	38,880.76

Source: [16] [17].

¹Ditch landfills, is a confining technique of disposal municipal solid waste on the ground without compaction and consequently with less requirements for implementations used in the state of São Paulo and regulated by decrees 44,760 and 45,001 both implemented in 2000. This procedure allows small towns, with a population under to 25,000 inhabitants and daily generation of MSW less than ten tons, have their waste be disposal without the necessity to implement a landfill [18].

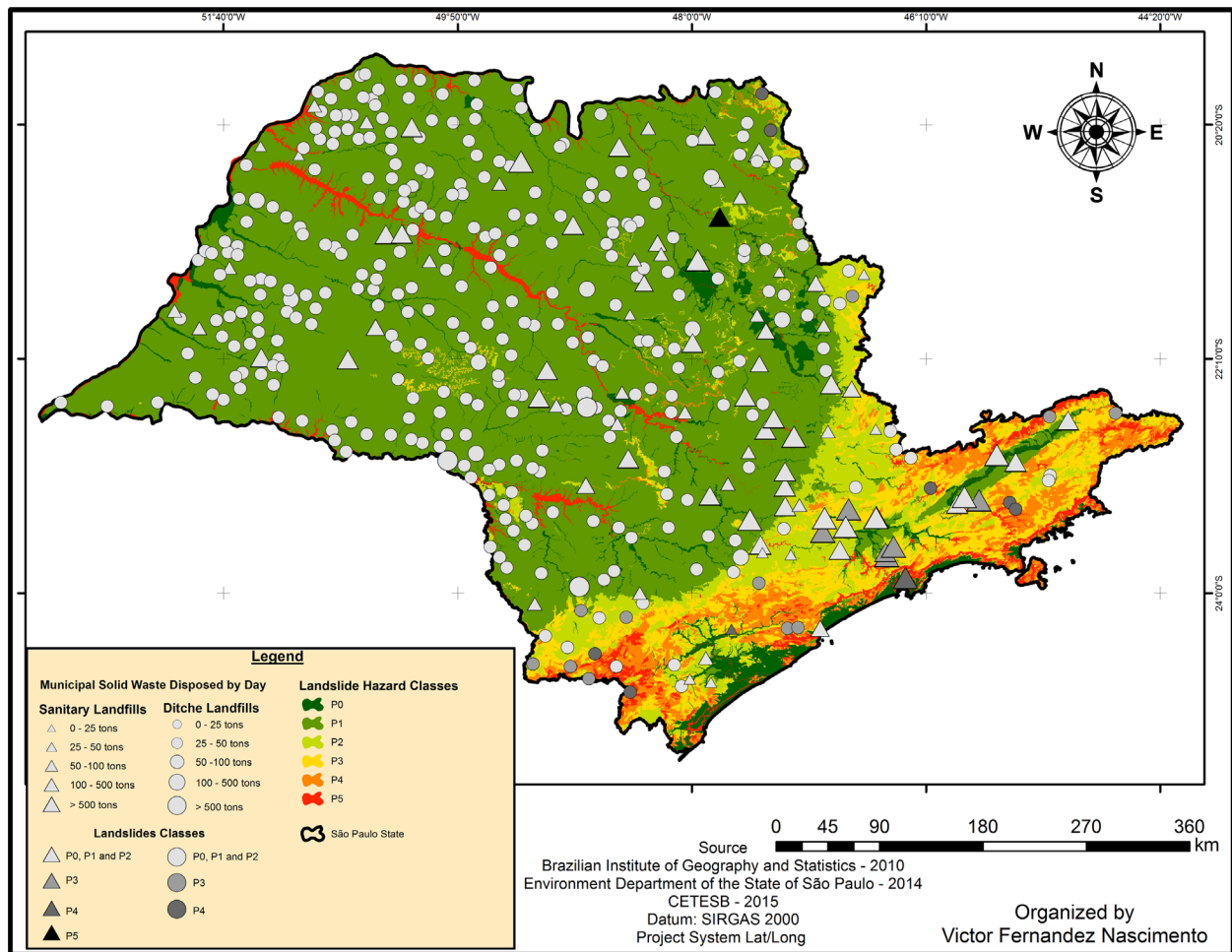


Figure 2. Map of landslide hazard in MSW disposal sites in the state of São Paulo, Brazil. The quantity of municipal solid waste disposed by day is in tons, in ditch and sanitary landfills, is represented by circles and triangles respectively. The more waste is disposed, the bigger is the geometric forms. Ascending order of landslide classes are indicated in ascending order of grayscale. The map also contains landslides hazard classes, which are represented by color scale.

In São Paulo state 5.4% of the ditch landfills and 11.2% of the sanitary landfills are located in higher classes of hazard landslide (P3, P4 and P5). If we just consider the five largest landfills (São Paulo*, São Paulo**, Mauá, Caieras and Santos) they receive together 17,896.67 tons of MSW per day, which is 46% of all MSW disposed of in the state (Table 2).

Ditch landfills, which are usually the smallest, located in medium, high and very high landslide hazard classes (P3, P4 and P5) receive daily 76.74 tons of municipal solid waste. Sanitary landfills, which are usually the large ones, also located in these same hazard classes P3, P4 and P5 receive daily 19,546.82 tons of solid waste. Together, sanitary and ditch landfills receive approximately 19,624 tons per day, accounting 50.5% of the total municipal solid waste disposed of in susceptible landslide hazard areas in São Paulo state (Figure 3).

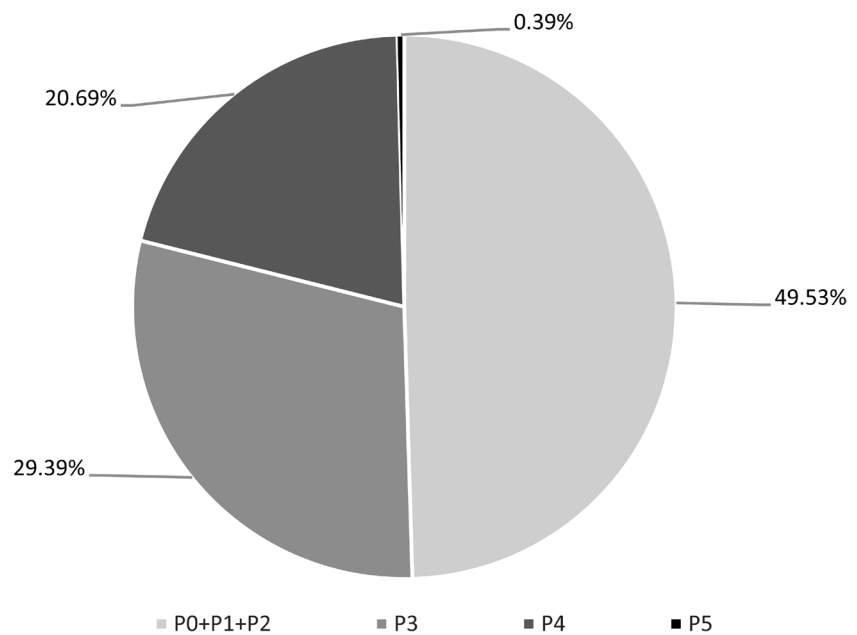
4.2. Flood Hazard in Municipal Solid Waste Disposal Sites

In order to evaluate the flood hazard susceptibility of municipal solid waste disposal

Table 2. Municipal solid waste disposed of in landfills that are in middle, high and very high classes (P3, P4 and P5) of hazard landslide.

Classes	Sanitary Landfills	MSW/Day (tons)	Ditch Landfills	MSW/Day (tons)	
P5	Jardinópolis	150.79			
			Apiá	12.82	
P4			Igaratá	5.16	
	São Paulo**	6550.00	Cristais Paulista	4.17	
	Santos	1454.82	Barra do Turvo	2.26	
	Juquia	8.59	Rifaina	2.20	
			Natividade da Serra	1.99	
			Redenção da Serra	1.58	
			Piquete	9.31	
			Itariri	7.42	
		São Paulo*	5676.56	Divinolândia	5.41
		Mauá	2585.55	Pedro de Toledo	5.25
P3	Caieras	1629.74	Guapiara	5.06	
	Itapevi	777.15	Nova Campina	4.36	
	Jambeiro	507.92	Tapirai	4.05	
	Santo André	205.70	Areias	1.81	
			Itapirapua Pta	1.40	
			Itaoca	1.27	
			Ribeira	0.88	

Source: [16] [17]. *Landfill located at Av. Sapopemba, n° 22,254—CTL. **Landfill located at Estrada Professor Edmundo Rosset, n° 7450—Vila Bela-SP-CDR.

**Figure 3.** Percentage of municipal solid waste disposed of in sanitary and ditch landfills according to the landslide hazard classes in the state of São Paulo.

sites in São Paulo State (Figure 4) we developed a spatial and statistical analysis for each hazard class.

When considering the spatial distribution of municipal solid waste disposal sites in São Paulo state, it is observed that most of them, about 414, are on hill-sides or near them, so, in the flood hazard map, these areas are classified as null, very low and low classes, (P0, P1 and P2) respectively. The six remaining are sanitary landfills and are allocated as follows: three in medium (P3), one in high (P4), and two in very high flood hazard class (P5) (Table 3).

Although most of the municipal solid waste is disposed of in areas of low flood hazard we still have the landfills of Santos, Jardinópolis, Peruíbe, Guatapar, Cachoeira Paulista and Pirassununga situated in areas susceptible to flooding (Table 4). The other landfills located in middle, high and very high hazard classes, (P3, P4 and P5) receive daily 3339.93 tons of municipal solid waste, which corresponds to approximately 8.6% of the total solid waste daily disposal in So Paulo state (Figure 5).

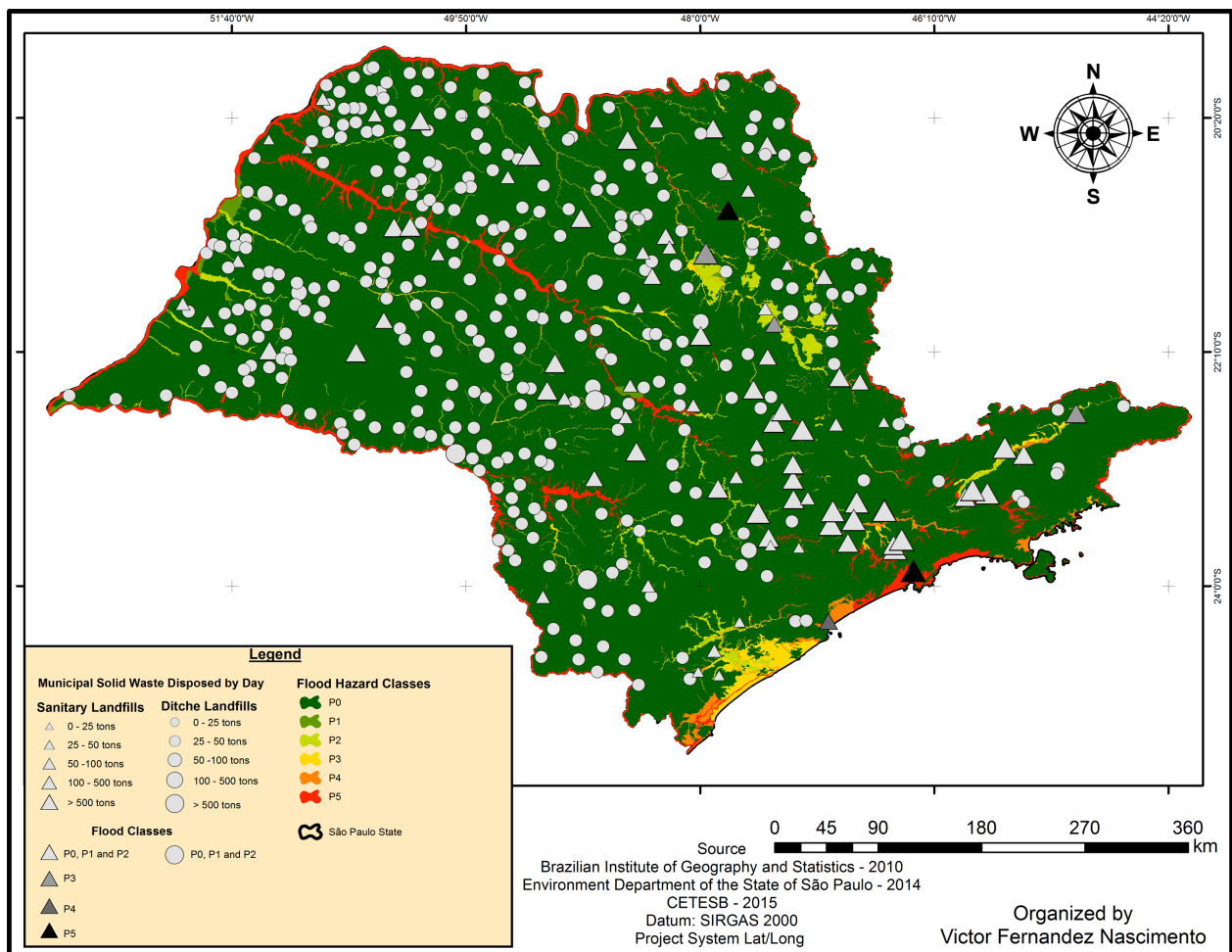


Figure 4. Map of flood hazard in MSW disposal sites in the state of So Paulo, Brazil. The quantity of MSW disposed by day in tons, in ditch and sanitary landfills, is represented by circles and triangles respectively. The more waste is disposed, the bigger is the geometric forms. Ascending order of flood classes are indicated in ascending order of grayscale. The map also contains flood hazard classes, which are represented by color scale.

Table 3. Municipal solid waste disposal sites in the state of São Paulo according to hazard flood class.

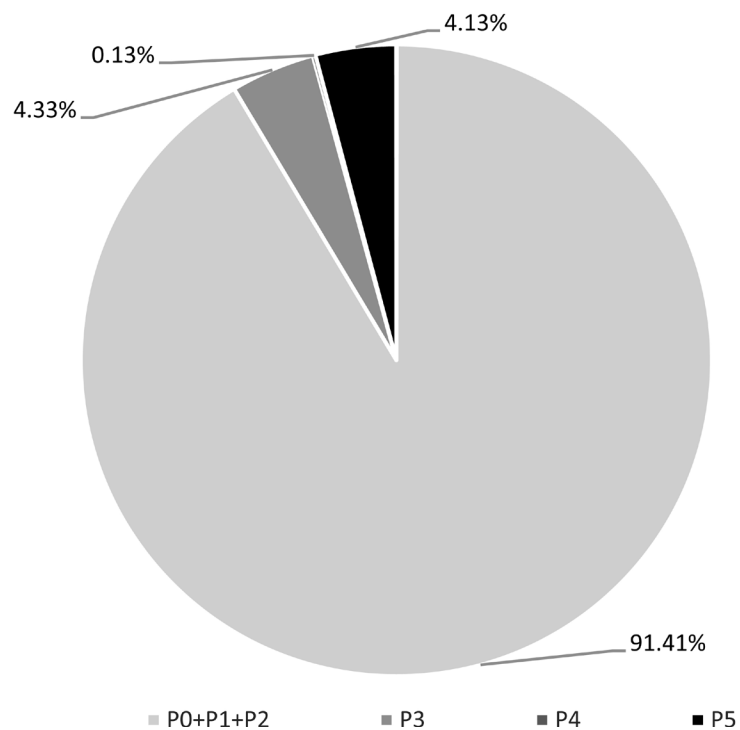
Landslide Hazard Class	Number of Ditch Landfills	Number of Sanitary Landfills	Ton of MSW/Disposed per Day
P0 + P1 + P2	331	83	35,540.83
P3	0	3	1683.3
P4	0	1	51.04
P5	0	2	1605.59
Total	331	89	38,880.76

Source: [16] [17].

Table 4. Municipal solid waste disposed of in landfills that are in middle, high and very high classes (P3, P4 and P5) of hazard flood.

Classes	Sanitary Landfills	MSW/Day (tons)	Ditch Landfills	MSW/Day (tons)
P5	Santos	1454.80	0	0
	Jardinópolis	150.79	0	0
P4	Peruíbe	51.05	0	0
	Guatapar	1301.60	0	0
P3	Cachoeira Paulista	327.36	0	0
	Pirassununga	54.34	0	0

Source: [16] [17].

**Figure 5.** Percentage of municipal solid waste disposed of in landfills according to the flood hazard classes in the state of São Paulo.

5. Conclusions

This study revealed that the majority of landfills in São Paulo state are located in landslide and flood hazard low classes (P0, P1 and P2), 93.3% and 98.6% respectively. Although these percentages cover much of the municipal solid waste disposal sites, we still have 8.6% of the generated municipal solid waste settled in areas of flood hazard and 50.5% in landslide hazard areas. From these findings, it is noteworthy that some landfills are susceptible to both hazards, such as Santos and Jardinópolis. Therefore, we concluded that in São Paulo state approximately 55% of municipal solid waste, which correspond to 21,357.54 tons per day, are disposed of in susceptible areas for both landslides and flood hazards.

Rain is one of the main factors related to both hazards analyzed in this study. During floods, rivers need to overflow their limits; many of Brazil's rivers are formed through fluvial systems. During a landslide, in addition to geotechnical conditions of the areas, the accumulated amount of rainfall per time is one of the most important factors. For this reason, the distribution of rainfall is directly related to flood and landslide hazards.

Climate models suggest that in the coming decades, there will be a decrease in the amount of rainfall in São Paulo state, but extreme events, such as heavy rains, will intensify. Therefore, the number of sites that are located in hazardous areas can increase, as the amount of MSW is disposed of in susceptible areas. The use of GIS is proved to be an appropriate tool to carry out this type of analysis, so we recommend that the risk of natural disasters should be taken into consideration in the process of finding landfill areas. Mainly, because, there is a tendency for extreme weather events to increase causing more flood and landslide events and consequently contributing to water scarcity and water degradation.

These results in this study identified the São Paulo's MSW final disposal sites, which require more attention and control to prevent the occurrence of landslides and flooding. Prevention of these hazards will also reduce the environmental, economic and social consequences inherent to these events. In conclusion, this type of spatial analysis can help to promote the mitigation of these hazards and assist in identifying new areas for siting landfills; and, analysis should take into account the current scenario of water resources and climate change.

Acknowledgements

The authors thank to FAPESP for Victor Fernandez Nascimento's doctoral fellowship (n°13/09039-7) and the Nitrogen cycling in Latin America: Drivers, Impacts and Vulnerabilities project (CRN 3005). The Institutional Program for Scientific Initiation Scholarships (PIBIC-INPE/CNPq) for scientific initiation grants for Gabriela Carvalho de Oliveira (n° 122435/2015-0) and Dirceu Estevam Lupetti Siqueira (n° 123968/2015-1) who helped organized the data for this study. The authors also thank, to Russ White for help with the spatial analysis, to Marissa Ahmadkhani and Marie Rosenwasser for English review, to the Earth System Science Center (CCST), to the National Institute for Space Research (INPE), and to the Global Waste Research Institute at California Polytechnic State Uni-

versity, for the support given during this research.

References

- [1] Brasil (2007) Lei n.11445 de 5 de janeiro de 2007—Estabelece diretrizes nacionais para o saneamento básico.
- [2] Karak, T., Bhagat, R.M. and Bhattacharyya, P. (2012) Municipal Solid Waste Generation, Composition, and Management: The World Scenario. *Critical Reviews in Environmental Science and Technology*, **42**, 1509-1630.
<https://doi.org/10.1080/10643389.2011.569871>
- [3] ABRELPE (2014) Panorama dos resíduos sólidos no Brasil—2013. [Overview of Solid Waste in Brazil 2013.] 114.
- [4] Dalmas, F.B., Goveia, S.S., de Oliveira, F.R., do Amaral, C.H. and Macedo, A.B. (2011) Geoprocessamento Aplicado à Gestão de Resíduos Sólidos na UGRHI-11 Ribeira de Iguape e Litoral Sul. [Geoprocessing Applied to Solid Waste Management at UGRHI-11 Ribeira de Iguape and South Coast.] *Geociências*, **30**, 285-299.
- [5] Brasil (2010) Lei n° 12.305, de 2 de agosto de 2010. Institui a Política Nacional de Resíduos Sólidos; altera a Lei n° 9.605, de 12 de fevereiro de 1998; e dá outras providências. Diário Oficial da República Federativa do Brasil; Brasília; Distrito Federal.
- [6] ABRELPE (2013) Panorama dos Resíduos Sólidos no Brasil—2012. [Overview of Solid Waste in Brazil 2012.]
- [7] Filgueira, H.J.A., Nóbrega, C.C., Gadelha, C.L.M., Barbosa, M.P. and Mendoza, F.J.C. (2013) Deposição final dos resíduos sólidos: Proposta de desenvolvimento metodológico para mitigação de risco de desastres. [Final Disposal of Solid Waste: Proposal for Methodological Development for Disaster Risk Mitigation.] *Vsiir-Redisa*.
- [8] BRASIL (2007) Política Nacional de Defesa Civil. [Brazilian National Civil Defense Policy.] Ministério da Integração Nacional.
- [9] Vestena, L., Geffer, E., de Almeida, D.E.F. and Vestena, C.L.B. (2014) Percepção Ambiental Sobre As Causas Das Inundações, Guarapuava/Pr : Em Busca Da Cidade Resiliente. [Environmental Perceptions about the Causes of the Flood, Guarapuava/PR: The Quest for the Resilient City.] *Revista do Departamento de Geografia*, **28**, 280-294.
- [10] United Nations Office for Disaster Risk Reduction (UNISDR) (2004) Living with Risk: A Global Review of Disaster Reduction Initiatives. vol. 1, 429 p.
- [11] Tominaga, L.K., Santoro, J. and Amaral, R. (2009) Desastres Naturais: Conhecer para prevenir, IG. [Natural Disasters: Knowing to Prevent.] São Paulo.
- [12] Carlos Tavares, A. and Silva, A.C.F. (2008) Urbanização, Chuvas de Verão e Inundações: Uma Análise Episódica. [Urbanization, Summer Rainfall and Flood: A Episodic Analysis.] *Journal of Climatology and Landscape Studies*, **3**, 39-60.
- [13] Guha-Sapir, D., Hoyois, P. and Below, R. (2015) Annual Disaster Statistical Review 2014: The Numbers and Trends. CRED, Brussels.
- [14] Silva, E.L.E., Gomes, R.A.T., Guimarães, R.F. and Carvalho, O.A. (2013) Employment of Shallow Landslides Model for Disaster Hazard Management in the City of Vitória-ES. *Sociedade & Natureza*, **25**, 119-131.
<https://doi.org/10.1590/S1982-45132013000100010>
- [15] IBGE (2016) Perfil dos Estados Brasileiros. [Profile of the Brazilian States.]
- [16] CETESB (2015) Inventário estadual de resíduos sólidos urbanos 2014. [São Paulo State Inventory of Municipal Solid Waste.] 126.

- [17] SÃO PAULO (2014) Unidade Básica de Compartimentação do Meio Físico (UBC) do Estado de São Paulo. [São Paulo State Basic Unit of Compartmentalization of the Physical Environment (UBC).] 28.
- [18] SÃO PAULO (2010) Manual de operação de aterro sanitário em valas. [Ditch Land-fill Operation Manual.] 24.