

# Traditional Knowledge System Based GIS Mapping of Antimalarial Plants: Spatial Distribution Analysis

Abdul Qayum<sup>1,2\*</sup>, Andrew Michael Lynn<sup>1\*</sup>, Rakesh Arya<sup>3</sup>

<sup>1</sup>Center for Biology & Bioinformatics, School of Computational & Integrative Sciences, Jawaharlal Nehru University, New Delhi, India

<sup>2</sup>Indira Gandhi National Forest Academy, Dehradun, India

<sup>3</sup>Center for the Study of Regional Development, JNU, New Delhi, India  
Email: \*[qayum.iitk@gmail.com](mailto:qayum.iitk@gmail.com), \*[andrew@jnu.ac.in](mailto:andrew@jnu.ac.in)

Received 25 July 2014; revised 20 August 2014; accepted 16 September 2014

Copyright © 2014 by authors and Scientific Research Publishing Inc.

This work is licensed under the Creative Commons Attribution International License (CC BY).

<http://creativecommons.org/licenses/by/4.0/>



Open Access

---

## Abstract

The native communities have been using their unique traditional knowledge system (TKS), culture, indigenous skills and expertise since the ancient times. India has witnessed its legacy from the time of Charaka & Susruta for TKS of medicinal plants. The objective of the study is to carry out inter-disciplinary work by integrating ethno-medicinal findings with Geographical Information System (GIS) tools to develop spatio-temporal maps covering antimalarial plants prevalent in three rural districts of Eastern Uttar Pradesh (UP), India. Two sources Flora Gorakhpurensis & Flora of Upper Gangetic Plains have been considered to evaluate all possible antimalarials prevalent in the study region and are cross validated with research papers and journals. GPS coordinates were recorded for marked locations and under GIS environment maps of antimalarials are generated to highlight geographical distribution of such plants. Further, these are analysed with respect to various natural plant habitats. 48 plants belonging to 25 families were found and its geographical distribution is illustrated through series of GIS maps. The developed map highlights the geographical location of antimalarial plants and facilitates easy access of plant's natural habitat. It is believed that the work would help researchers to find out the novel antimalarials towards open source drug discovery projects.

## Keywords

Antimalarial Plants, Bio-Prospecting, Geographical Distribution, GIS Mapping, Medicinal Plants, Vector Borne Disease

---

\*Corresponding authors.

## 1. Introduction

There is increased biotic pressure due to excessive increase in human population and over harvesting of nature and natural resource, resulting in increased attention to bio-prospecting [1]. The potential for physical flora collection to support scientific research is being enhanced by rapid development of information technology and remotely available digital database. India possesses rich floristic wealth and diversified genetic resources of medicinal plants. Several plants are used in traditional medicine for the treatment of vector borne diseases including malaria in many parts of the world [2]. Modern drugs have been deduced from folklore and traditional medicines [3] and hence the search for additional antimalarials from higher plants must continue to fight the deadly disease.

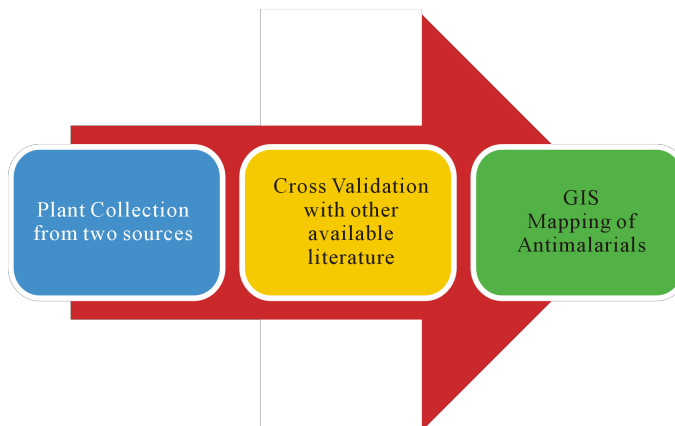
About 36% of world population is at risk of malaria. Around 2.5 million malaria cases are reported annually from South East Asia and 76% of it is in India (WHO, 2011). In the Tarai region of Eastern UP the spreading of vector borne diseases become uncontrolled especially during rainy seasons [4]. The need of the hour is to find new variety of drugs to combat the attack of mosquitoes who have found resistance to almost all old drugs. GIS provides the architecture and analysis tools to perform spatio-temporal modeling of disease transmission, and other factors relevant to the understanding of impacts and risk associated with malaria [5]. The effort has to be finding an alternative form of malaria control. Cost effective, practical and accessible interventions to be integrated into most malaria control programs. And thus investigation of insecticidal properties of plant-derived materials is environmentally safe, degradable and target specific.

Based on the parameters, like the recorded uses of medicinal plants, rarity and threat factors plant species and area can be identified to develop GIS based mapping using available software for visualizing, analyzing, creating, and managing data with a geographic component. Most data has a component that can be tied to a place using global positioning system (GPS) co-ordinates. GIS has been used as a “map maker” [6]. GIS supports multi-disciplinary analysis using a systematic approach and provides the ability to perform predictions of disease outbreaks based on available information. Later, plant density can also be calculated using image analysis algorithm applied on satellite data, and it can be cross validated with the available government data of forest of that area.

The trade in herbs and medicinal plants in UP at present stands at \$1000 million per annum approximately. The growth rate has increased from 7% to 15% in the last couple of years, but export from the state is extremely inferior. In UP, over 250,000 hectare land comes under cultivation of herbs. The demand for herbal and natural products is escalating globally. The international market of herbal products is estimated above \$62 billion while India's share in the global market of export is merely 0.5% (Economic policy Business Standard 2009) [7]. The demand for the high time is to explore several means and launch various bio-prospecting projects to harvest natural wealth of the country sustainably. State government of UP has taken various initiatives towards meeting herbal and medicinal needs of people including cultivation of antimalarial medicinal plant *Artemisia annua* by Central Institute of Medicinal and Aromatic Plants (CIMAP) Lucknow. It is used to extract artemisinin, a compound which is most widely used compound in the development of antimalarial drug.

Ethnobotanical exploration with respect to food value has been done for north-eastern tarai region of UP and found 27 underutilized edible fruits consumed by ethnic people [8]. It widens the scope of bio-prospection and has established database of these fruits may be helpful in for achieving food security and environmental sustainability. For north east India all the antimalarial plants have been enlisted to emphasize the need for an alternative drug for malaria for developing new indigenous antiplasmodic plants [9]. It has also been highlighted total herbal plants used for the treatment of malaria and found that many of these plants are being used since ancient times for the treatment of malaria throughout the world [10].

The current work is an amalgamation of data collection and its cross validation. It is based on two sources namely “Flora Gorakhpurensis” & “Flora of Upper Gangetic Plains” and cross validated with available literature survey (Figure 1). This is done to evaluate future prospects of all antimalarials prevalent in the region. Available literature amounts to numerous research papers and journals related such work of compilation of antimalarial plants and GIS applications. From the study area 48 antimalarial plants were reported. GPS coordinates were recorded for marked locations and under GIS environment maps of antimalarials are generated to highlight geographical distribution of such plants. Further, these are analysed with respect to various natural plant habitats. Having life in close vicinity of the nature, traditional societies have acquired unique knowledge about the use of flora and fauna in wild, most of which are still unknown to the common masses. The traditional knowledge, skills and practices thus developed are freely exchanged, cared for and nourished as a common property of the



**Figure 1.** Work strategy.

communities [11]. The current work has highlighted the geographical location (habitat) of antimalarial plants along with other details like plant species, plant family and local name.

The objective of the current study is to carry out inter-disciplinary work by integrating ethno-medicinal findings with GIS tools to develop spatio-temporal maps covering antimalarial plants prevalent in three rural districts of eastern UP, India. Further, the aim is to adapt and apply map design principles to minimize cognitive and perceptual burden of exploring complex data sets. Spatial distribution of malaria using GIS happens to be a *de novo* approach in defining plants of a given locality and the advancement in information technology will certainly give an edge to this emerging field of research.

## 2. Materials and Methods

### 2.1. Study Area

The study area outlines three rural (Rural Population: 88.53%) districts of north-eastern corner of the most populous state of UP, India (**Figure 2**) with 3.82% state area. It is surrounded by rivers Rapti (tributary to the Gandak) and Rohini. Geographical extension of three districts are; Gorakhpur (Lat. 26°13'N to 27°29'N and Long. 83°05'E to 83°56'E), Kushinagar (Lat. 26°39'N to 27°15'N and Long. 83°38'E to 84°15'E) and Maharajganj (Lat. 26°59'N to 27°19'N and Long. 83°09'E to 83°45'E). It also shares international border with Nepal. The study area is home to 10,690,142 people of Indian masses with 48.60% female population and 1,680,587 as total house hold of which 87.98% is rural house hold [12]. Study area belongs to low socio-economic zone [13] with 3,462,855 total work participation (Female: 28.3%) & 1,708,932 main work participation (Female: 19.1%) and 1,753,923 marginal worker (Female: 37.3%) while monthly income is 70.3 USD and population is merely agrarian (97.48%) with 87,400 main industry working.

### 2.2. Data Collection

Two sources Flora Gorakhpurensis [14] & Flora of Upper Gangetic Plains [15] have been considered to evaluate all possible antimalarials prevalent in the study region and are cross validated with numerous research papers and journals. GPS coordinates were recorded for marked locations and under GIS environment maps of antimalarials are generated to highlight geographical distribution of such plants. Further, these are analysed with respect to various natural plant habitats. To evaluate plants distribution a pie chart (**Figure 3**) has been drawn for plants present in various habitats.

### 2.3. Methodology

Study is based on extraction of ethno-medicinal utilities of plants based on two sources and cross examined with traditional knowledge (TK) available in relevant literatures [3] [9] [16]-[22] including various research papers & journals to obtain **Table 1**. For geographical location; GPS (Global Positioning System) coordinates were recorded. The GIS Maps were generated through satellite imageries, plant location description and GPS observa-

**Table 1.** Antimalarial plants prevalent in the study area.

S. No.	Plant species	Family	Local name	Plant habitat
1	<i>Abrus precatorius</i> Linn.	Fabaceae	Ratti, Ghumchi	Fruit orchard & climbing over trees.
2	<i>Acacia farnesiana</i> (L.) Willd.	Fabaceae	Tarua kadam (Ass)	Found wild in wastelands, cultivated in gardens.
3	<i>Achyranthes aspera</i> Linn.	Amaranthaceae	Chirchita/Apamarga/Chitchita	Roadsides, hills up to 900 m, Railway lines, wastelands.
4	<i>Adhatoda vasica</i> Nees	Acanthaceae	Arusa/Vasaka	Cultivated lands, Waste places & Railway tracks.
5	<i>Aerva lanata</i> (L.) Juss. ex Schult.	Amaranthaceae	Gorakhganja/Bhadra	Weed of crop fields, in fruit orchards.
6	<i>Alstonia scholaris</i> (L.) R.Br.	Apocyanaceae	Saptaparna/Saptachada/chatiyan	Planted as roadside tree & also found wild.
7	<i>Alternanthera sessilis</i> (L.) R.Br. ex DC.	Amaranthaceae	Gudrisag/Matsyaksi	Weed of cultivated field & in moist waste places.
8	<i>Amaranthus spinosus</i> Linn.	Amaranthaceae	Chaulai Bhaji, Cholai	Along roads, canals, railway tracks & weed of cultivated fields.
9	<i>Ammannia baccifera</i> Linn.	Lythraceae	Dadamari	Marshy lands, Paddy fields, moist places
10	<i>Andrographis paniculata</i> Wall. ex Nees	Acanthaceae	Kalmegh	Shady waste grounds.
11	<i>Asteracantha longifolia</i> (L.) Nees	Acanthaceae	Talmakhana	Shallow ditches along roads.
12	<i>Azadirachta indica</i> A. Juss	Meliaceae	Neem	Planted in gardens & near temples.
13	<i>Barleria prionitis</i> Linn.	Acanthaceae	Kastira, Bajradanti	Waste ground, planted as border plant.
14	<i>Bauhinia variegata</i> Linn.	Fabaceae	Kachnar	Planted in gardens & as roadside tree.
15	<i>Boerhaavia diffusa</i> L.nom.cons.	Nyctaginaceae	Gadapurna/Punarnava	Elevated lands, roadsides, railway tracks, waste places, crevices of walls & orchards.
16	<i>Caesalpinia crista</i> (Linn.)	Fabaceae	Kat-karanj, Karanju	Open wastelands & along Nallas.
17	<i>Carica papaya</i> Linn.	Caricaceae	Papita	Cultivated around bungalows & gardens.
19	<i>Cissampelos pareira</i> Linn.	Menispermaceae	Harjuri, Bharatbuti	Fruit orchard, & as hedges of parks & gardens.
20	<i>Citrus medica</i> Linn.	Rutaceae	Jamerinimbu	Planted in Gardens, Lahladpur area.
21	<i>Clerodendron infortunatum</i> Linn.	Verbenaceae	Bhat	Under shades of trees, fruit orchards.
22	<i>Cuscuta reflexa</i> Roxb.	Convolvulaceae	Amarbel	Twining upon <i>Adhatoda vasica</i> , near Surajkund, Tiwaripur region.
23	<i>Cyperus scariosus</i> Br.	Cyperaceae	Nagarmotha/Chakranksha	Shallow water bodies of study area.
24	<i>Datura metel</i> Linn.	Solanaceae	Dhatura	Frequently in waste places.
25	<i>Eclipta prostrata</i> (Linn.) Linn.	Asteraceae	Bhangraiya, Bhringaraj	Open pastures, wet regions, along water canals.

## Continued

26	<i>Erythrina variegata</i> Linn.	Fabaceae	Pangara	Moderate sized deciduous tree planted in gardens, Near Ramgarh tal.
27	<i>Jatropha gossypifolia</i> Linn.	Euphorbiaceae	Bhakrend	Roadside weed & found at other waste ground.
28	<i>Lantana camara</i> Linn.	Verbenaceae	Ghaneri	Roadsides, Wild, Wastelands & Railway colony.
29	<i>Leucas aspera</i> (Willd.) Link.	Lamiaceae	Gopha, Drona pushpi	Weed of crop field, waste places, dry open sandy soil, Bhathat region.
30	<i>Ludwigia octovalvis</i> (Jacq.) P.H. Raven	Onagraceae	Panijalokia	Wet places, sides of tanks.
31	<i>Magnolia grandiflora</i> Linn.	Magnoliaceae	Andachampa	Planted in gardens, Gorakhnath temple area.
32	<i>Momordica charantia</i> Linn.	Cucurbitaceae	Kathnim, Karavellaka	Cultivated, found wild, climbing on hedges.
33	<i>Murraya koenigii</i> (L.) Sprengel	Rutaceae	Bursunga/Gandhla	Deciduous shrub on waste grounds along water bodies, planted in gardens.
34	<i>Nyctanthes arbortristis</i> Linn.	Oleaceae	Harsingar	Gardens, Bungalow, Temple & Railway colonies.
35	<i>Ocimum sanctum</i> Linn.	Lamiaceae	Tulsi	Found as an escape from cultivation in moist places.
36	<i>Oenanthe javanica</i> (BL.) DC.	Apiaceae	Pan tarori	Weed in moist waste places, fruit orchards, along water channels.
37	<i>Pongamia pinnata</i> (L.) Pierre	Fabaceae	Karanja	Roadside, near Canals, Wasteland, Moist regions, Pharenda & Ramgarh forest.
38	<i>Putranjiva roxburghii</i> (Wall.)	Euphorbiaceae	Putjev, Jiaputa, Putrajiva	Wild, tropical & cultivated, hedge plants in gardens.
39	<i>Rauvolfia serpentine</i> (Linn.) Benth.	Apocynaceae	Dhamarharua	Damp places, wild in forests.
40	<i>Scoparia dulcis</i> Linn.	Scrophulariaceae	Mithi patti	Waste places & a weed of crop fields.
41	<i>Sida rhombifolia</i> Linn.	Malvaceae	Bariara	Shady waste places near tals (water bodies), hedges.
42	<i>Solanum indicum</i> Linn.	Solanaceae	Lapta Brihatti, Banbhanta	Found as wild in whole study area.
43	<i>Stephania japonica</i> (Thunb.) Miers.	Menispermaceae	Rajpatha	Hedges on moist ground.
44	<i>Streblus asper</i> Lour.	Moraceae	Singhor	Small evergreen tree found throughout.
45	<i>Tinospora cordifolia</i> (Thunb.) Miers.	Menispermaceae	Gurch, Giloe	On hedges & trees, tropical regions of study area.
46	<i>Vandellia sessiliflora</i> Benth.	Scrophulariaceae	Lindernia sp. Indian	Damp & shady places, grows with grasses.
47	<i>Vernonia cinerea</i> (Linn.) Less.	Asteraceae	Sahdevi	Weed of crop field & waste grounds.
48	<i>Xanthium strumarium</i> Linn.	Asteraceae	Lapetua	Waste places, long railway tracks & roadsides.

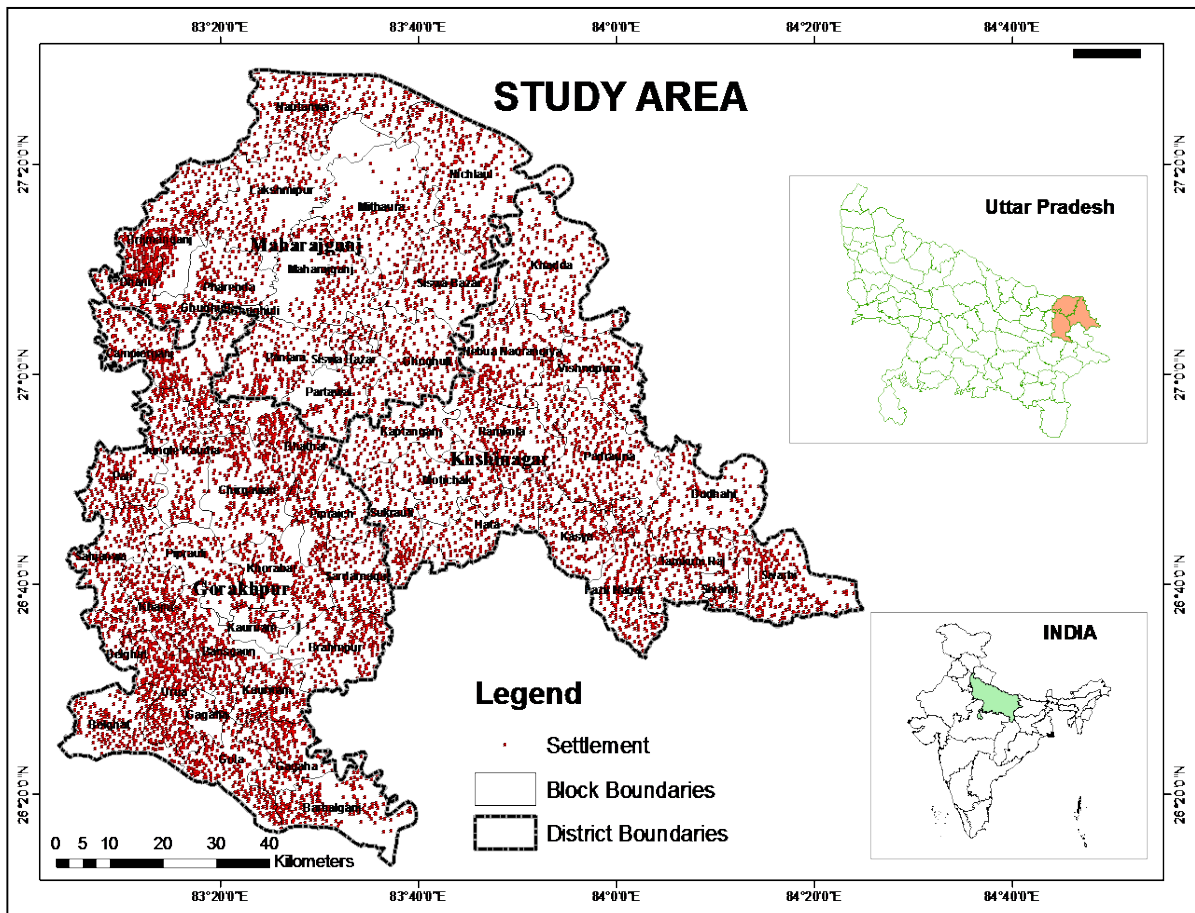


Figure 2. Location of study area.

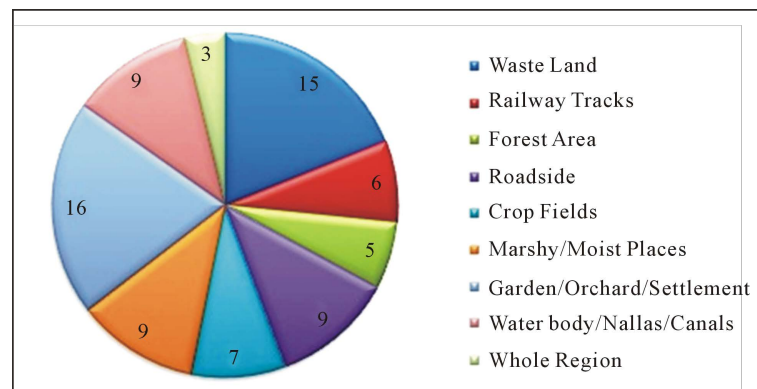


Figure 3. Plant distribution in various habitats.

tions using ArcGIS 10.

#### 2.4. GIS Mapping

The distribution of antimalarial plants is mapped based on references drawn from available literature, operational land imager (OLI) satellite imagery and limited field verification using GPS. The data collected from mentioned sources is integrated in ArcGIS 10 environment. Further, it is extrapolated over similar geographical environment using satellite imageries.

### 3. Results

#### 3.1. Ethnobotanical Data

48 plants belonging to 25 families were found and its geographical distribution is illustrated through series of GIS based maps (Figure 4 to Figure 8). These developed maps highlight the geographical location of antimalarial plants and facilitates easy access of plant's natural habitat. The collected plant data has been charted (Table 1) in order of plant species, plant family local name & plant habitat.

Also, geographical profile (Figure 9) of study area has been established to understand natural resources present in the region. The legend in this map accounts for various types of vegetation prevalent, water body present, man-made structures, settlements etc. Mapping is done to minimize cognitive and perceptual burden of complex data sets.

#### 3.2. GIS Mappings for Spatial Distribution

All 48 antimalarial plants of the study area are grouped in five GIS maps (Figure 4 to Figure 8) based on similar types of habitat. Legends in each map signify botanical names of plant prevalent in that region. The grouping of antimalarial plants in various GIS maps is based to maintain maximum presentation of their geographical extent as many antimalarial plants are not confined to only one geographical region. Figure 4 shows the distribution of plants usually found in the tree/forest, open pastures, river and water body regions. Figure 5 shows plants found in some specific locations like Lahladpur, Surajkund, Tiwaripur, Ramgarh Tal, Gorakhnath Temple, Pharenda (forest), Ramgarh (forest), Paniara, Bhathat areas whereas, in the same map plants mainly found in forest near tals and some found vaguely throughout the region are also shown.

The distribution of plants that are found in fruit orchards, waste/open areas and along railway tracks has also been shown (Figure 6) and the plants that are distributed in moist waste places, crop fields and along roadside are geographically represented (Figure 7) while the distribution of antimalarial plants in marshy lands, moist places, garden and temples (in settlements) and near nallas/canals are represented nicely using GIS (Figure 8).

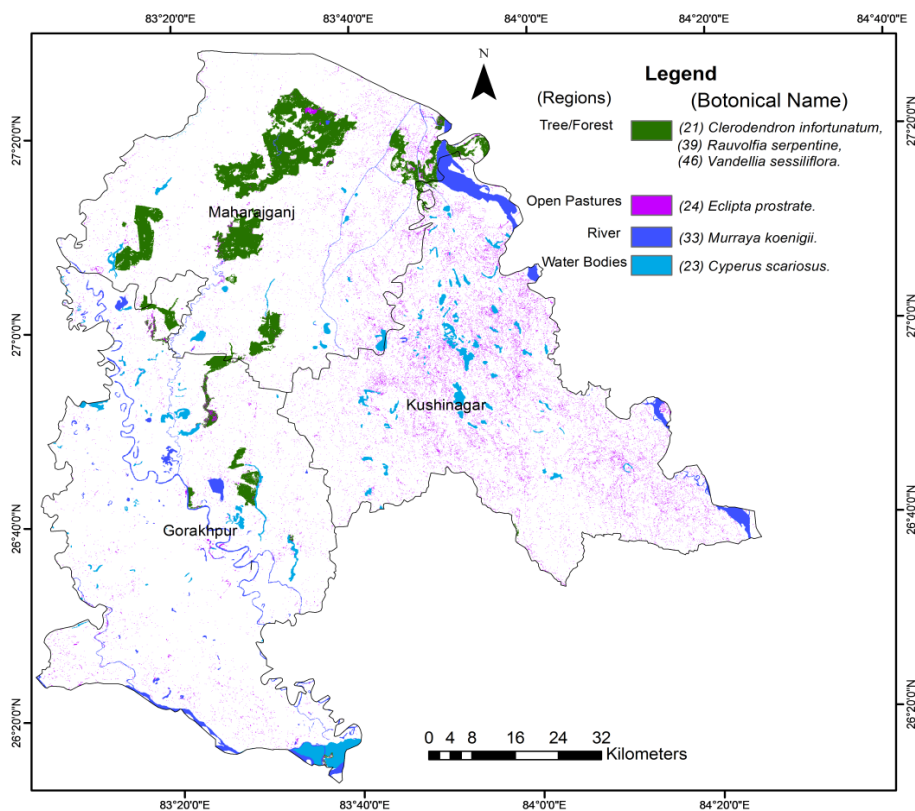


Figure 4. Antimalarials in forest & near water bodies.

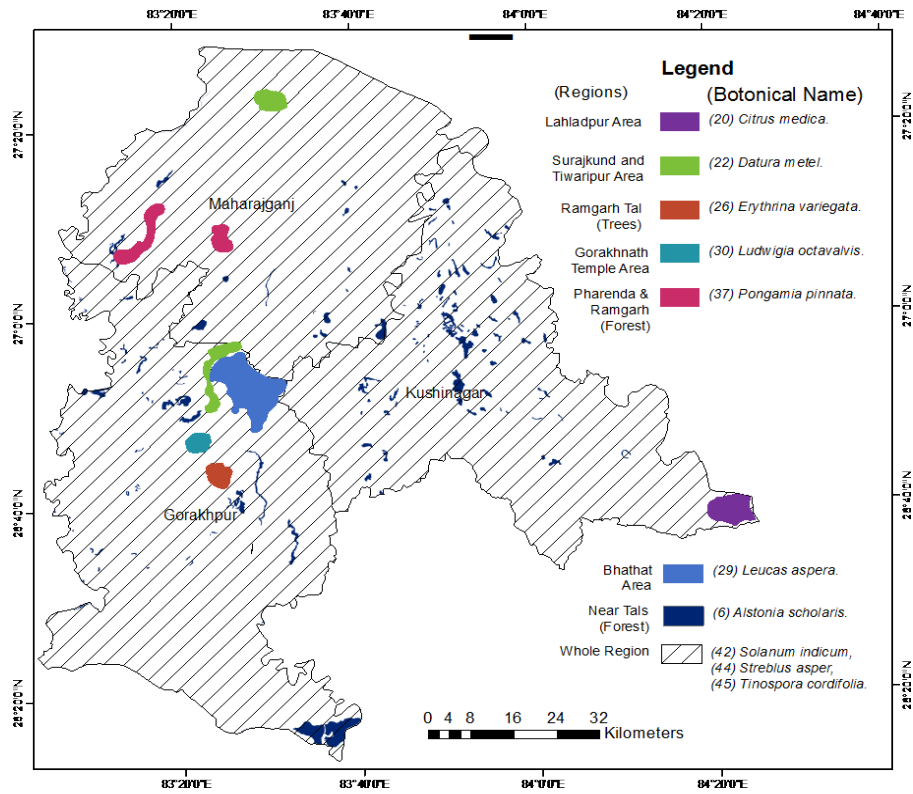


Figure 5. Antimalarials found throughout area & some specific locations.

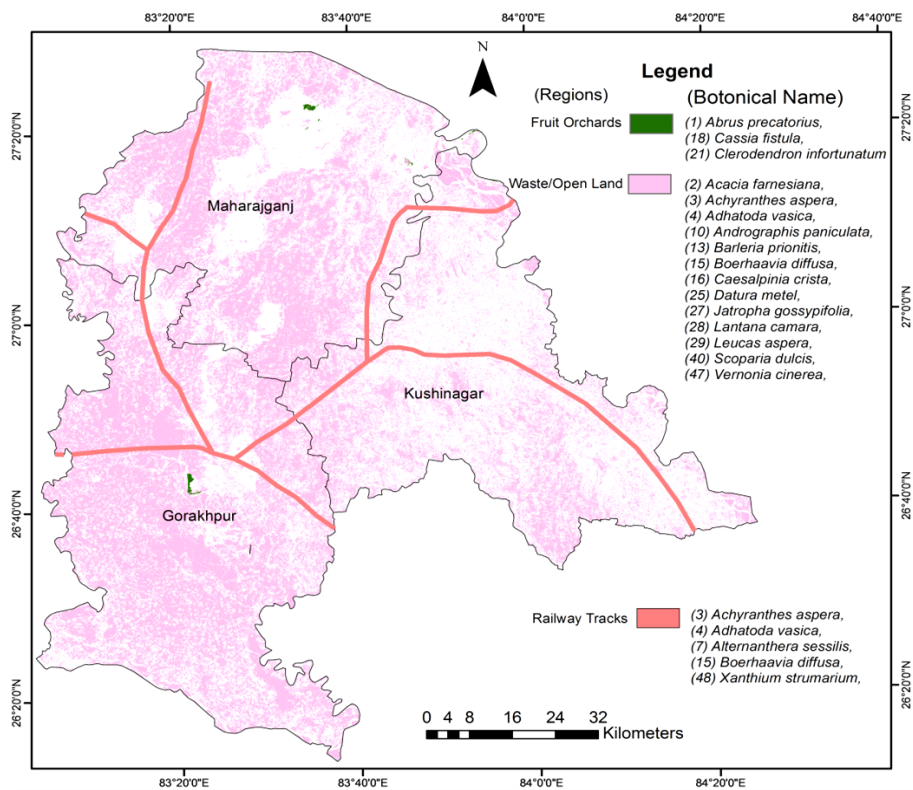


Figure 6. Antimalarials of orchards, waste lands & railway tracks.



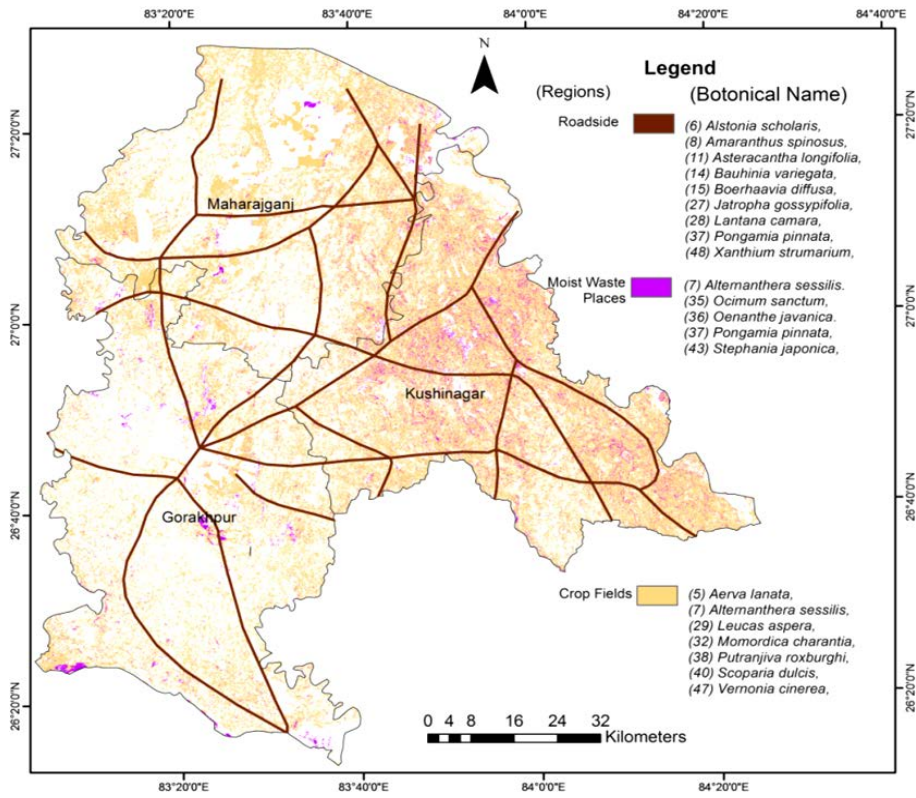


Figure 7. Antimalarials found in crop fields, roadsides & moist waste places.

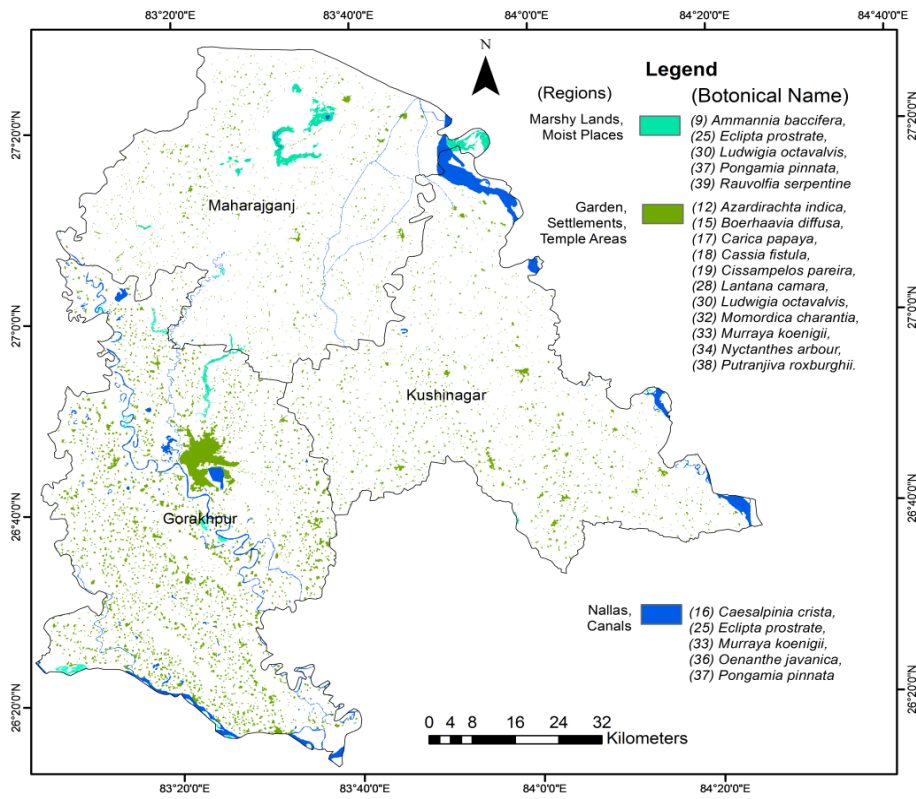
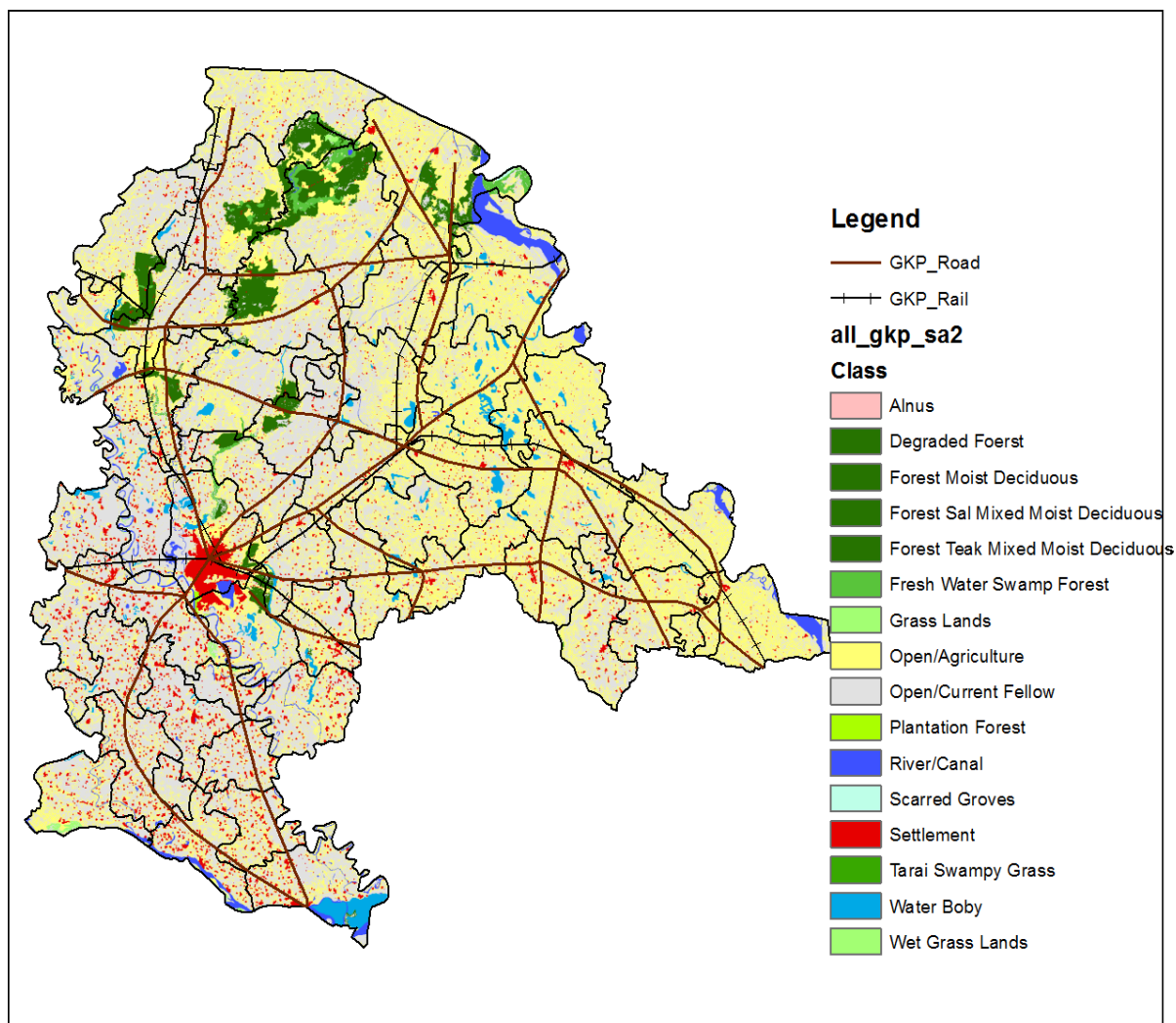


Figure 8. Antimalarials found in marshy, settlement & water bodies.



**Figure 9.** Geographical profile of study area.

Availability of any particular antimalarial plant can be easily traced across these maps using both legends of the map.

#### 4. Discussion

The work is not purely ethnobotanical in nature but amalgamation of ethnobotany & GIS. It is the work of ethnography. The native communities have been using their unique traditional knowledge system, culture, indigenous skills and expertise since the ancient times. India has witnessed its legacy from the time of Charaka & Susruta for traditional knowledge system (TKS) of medicinal plants. The GIS map has facilitated easy access of plant's natural habitat. Further, it depicts the importance and method of application of these plants towards treatment in case of malaria, fever and intermittent fever. Applying GIS mapping will catalyse the process of extraction of artemisinin & quinine derivatives from the antimalarial plants and it will be a novice idea especially with the growing importance of information technology and advancement in satellite imagery techniques. This region has monsoonal rainfall that makes it favourable for vector borne diseases and hence the traditional knowledge coupled with new technology makes this study highly useful for basic amenity stressed regions.

Geographical distribution has been fragmented to eight habitat types (Table 2) of waste land (WL-15 plants), railway tracks (RL-6 plants), forest area (FA-5 plants), Roadside (RD-9 plants), Marshy/Moist Places (MM-9), crop fields (CF-7 plants), Garden/Orchard/Settlement (GOS-16 plants), water body/nallas/canals (WB-9 plants),

**Table 2.** Distribution of plant in various natural habitats.

Plant species	Natural habitats of plants								
	WL	RL	FA	RD	MM	CF	GOS	WB	WR
<i>Abrus precatorius</i> Linn.							√		
<i>Acacia farnesiana</i> (L.) Willd.	√								
<i>Achyranthes aspera</i> Linn.	√	√							
<i>Adhatoda vasica</i> Nees	√	√							
<i>Aerva lanata</i> (L.) Juss. ex Schult.					√				
<i>Alstonia scholaris</i> (L.) R.Br.			√	√				√	
<i>Alternanthera sessilis</i> (L.) R.Br.ex DC.	√			√	√				
<i>Amaranthus spinosus</i> Linn.				√					
<i>Ammannia baccifera</i> Linn.					√				
<i>Andrographis paniculata</i> Wall. Nees	√								
<i>Asteracantha longifolia</i> (L.) Nees			√						
<i>Azadirachta indica</i> A.Juss							√		
<i>Barleria prionitis</i> Linn.	√								
<i>Bauhinia variegata</i> Linn.				√					
<i>Boerhaavia diffusa</i> L.nom.cons.	√	√		√			√		
<i>Caesalpinia crista</i> (Linn.)	√							√	
<i>Carica papaya</i> Linn.							√		
<i>Cassia fistula</i> Linn.								√	
<i>Cissampelos pareira</i> Linn.							√		
<i>Citrus medica</i> Linn.				√					
<i>Clerodendron infortunatum</i> Linn.		√			√				
<i>Cuscuta reflexa</i> Roxb.	√	√							
<i>Cyperus scariosus</i> Br.								√	
<i>Datura metel</i> Linn.		√							
<i>Eclipta prostrata</i> (Linn.) Linn.					√			√	
<i>Erythrina variegata</i> Linn.							√	√	
<i>Jatropha gossypifolia</i> Linn.	√			√					
<i>Lantana camara</i> Linn	√			√			√		
<i>Leucas aspera</i> (Willd.) Link.	√					√			
<i>Ludwigia octovalvis</i> (Jacq.) P.H.Raven				√		√			
<i>Magnolia grandiflora</i> Linn.							√		
<i>Momordica charantia</i> Linn.						√	√		
<i>Murraya koenigii</i> (L.) Sprengel						√	√		
<i>Nyctanthes arbor-tristis</i> Linn.							√		

## Continued

<i>Ocimum sanctum</i> Linn.				√		
<i>Oenanthe javanica</i> (BL.) DC.				√		√
<i>Pongamia pinnata</i> (L.) Pierre	√	√	√			√
<i>Putranjiva roxburghii</i> (Wall.)				√	√	
<i>Rauvolfia serpentina</i> (Linn.) Benth.		√		√		
<i>Scoparia dulcis</i> Linn.	√					√
<i>Sida rhombifolia</i> Linn.	√					√
<i>Solanum indicum</i> Linn.						√
<i>Stephania japonica</i> (Thunb.) Miers.				√		
<i>Streblus asper</i> Lour.						√
<i>Tinospora cordifolia</i> (Thunb.) Miers.						√
<i>Vandellia sessiliflora</i> Benth.			√			
<i>Vernonia cinerea</i> (Linn.) Less.	√					√
<i>Xanthium strumarium</i> Linn.		√		√		

WL = Waste Land, RL = Railway Tracks, FA = Forest Area, RD = Roadside, MM = Marshy/Moist Places, CF = Crop Fields, GOS = Garden/Orchard/Settlement, WB = Water Body/Nallas/Canals, WR = Whole Region.

whole region (WR-3 plants). There are many plants found in more than one habitat type. Largest number of plants is found in gardens, orchard and settlements while as many as 15 plants are found in waste lands. There are three plants *Solanum indicum*, *Streblus asper* and *Tinospora cordifolia* which are found throughout the study area & in abundance (Figure 5). In the study area two species namely Nagarmotha (*Cyperus scariosus*) and Goma or *Drona pushpi* (*Leucas aspera*) are at the verge of extinction mainly due to the change in water reservoir structure i.e. because of loss of water bodies like ponds and other reservoirs for the former and because of change in land-use pattern for the latter. Further, due to ruthless exploitation, many important medicinal plants species are becoming rare and some of them are critically endangered (As per the IUCN, Switzerland Red List Criteria). It is estimated that 10% of all plant species are currently endangered in India [19].

Herbal medicines have good values in malaria treatment and because of its potential in many countries scientific investigations are undergoing and nearly 85% traditional medicines are plant derived [23]. Conservation of natural resources as well as its sustainable use is important in preservation of traditional knowledge.

Series of works have been done on ethno-botany work and ethno-ecology. However, GIS based mapping is indeed a novice idea. Spatial distribution using GIS happens to be new field of research and can be used in defining plants of a given region. Geo-visualization research in last 15 years directed considerable effort towards enhancing dynamic and interactive maps [24]. There are many remote places which are restricted for any physical reach for identification of plants. In this peculiar circumstance GIS could be a tool to address all these complexities using extrapolation techniques. Study area in the work happens to be least developed part of one of the poorest State in India. Thus, working for low socio-economic profile region will certainly be useful at larger scale and will bear extended benefits when the work will be thoroughly evaluated. The geographical maps (Figures 4-7, Figure 9) are primarily drawn on the basis of GPS co-ordinates collected during field visit. But there are many remote points which remained unreachable because of rainy seasons and geographical terrain and hence for such regions extrapolation was done. Using the map results one can directly approach for any particular plant and assesses its geographical health. It gives precise location of plants in the identified geographical territory.

## 5. Conclusions

The work would help researchers to find out the novel antimalarials towards open source drug discovery projects. GIS maps serve the purpose of emphasizing spatial distribution of plants. GIS mapping has got potential

application in field of traditional knowledge mapping in times to come. Much work in this promising field has yet to be done. Integrating legends (of plant botanical names) with maps enhance readability of maps and it can be easily understood for the geographical features of the study region. The GIS based technique can be used to trace a given antimalarial geographically in a speedy manner. There exists alarming need to conserve and protect these important species for sustainable harvesting. A serious endeavor has to be taken to save these natural resources for the generations to come.

The work carried out in the region reveals that the plants recorded are highly valuable for antimalarial application and in future; bio-prospecting projects can be further initiated for sustainable harvesting towards developing antimalarial drug for curing malaria at large. A GIS based national mapping of antimalarials can be aimed and the task can be integrated with on-going umbrella projects bio-prospection of CSIR, New Delhi under domain of open source drug discovery for malaria (OSDDm). Some plants are nearly extinct in the region, the reason being change in land use pattern and shrinking of water bodies along with overharvesting of herbs. The bio-depletion of these antimalarials is due to the burgeoning population.

The GIS based approach can be made microscopic further by accommodating geographical features linked to growth of an antimalarial plant in a given area. Developing a link between information technology and ethnobotany will be a novice idea especially when world technology is changing rapidly. GIS has touched all walks of human interfaces and thus application of GIS in the research paper has been done to map antimalarial plants of any given locality. Traditional plant knowledge and plant spatial distribution can be linked further and its understanding is enhanced with GIS mappings. It is anticipated that in times to come GIS will be a dominant tool to understand ethnography.

## Acknowledgements

We are highly indebted to the Open Source Drug Discovery Project for malaria of CSIR, New Delhi for providing financial assistance which kept constant high motivation throughout the work. We also acknowledge the computer laboratory facility at School of Computational & Integrative Sciences and Centre for the Study of Regional Development, Jawaharlal Nehru University, New Delhi and is equally indebted to the Ministry of Environment & Forest, MoEF Govt. of India for its continuous support towards making this work plausible.

## Conflict of Interest

None declared.

## Prior Informed Consent and Ethic

Not required.

## References

- [1] Kipgen, S. (2013) Bioprospecting and Identification of Anti-Malarial Compounds in Plants from Biodiversity-Rich Areas in India. CSIR-OSDD Natural Plant Products Project.
- [2] Saxena, S., Pant, N., Jain, D.C. and Bhakuni, R.S. (2003) Antimalarial Agents from Plant Sources. *Current Science*, **85**, 1314-1329.
- [3] Verma, A.K., Kumar, M. and Bussmann, R.W. (2007) Medicinal Plants in an Urban Environment: The Medicinal Flora of Banares Hindu University, Varanasi, Uttar Pradesh. *Journal of Ethnobiology and Ethnomedicine*, **3**, 35.
- [4] Qayum, A., Lynn, A.M., Arya, R. and Jaiswal, S.K. (2013) GIS Integrated Epidemiological Indices for Risk Area Identification towards Malaria Control Measures. *International Journal of Engineering and Advanced Technology (IJEAT)*, **2**, 376-381.
- [5] Auer, T., MacEachren, A.M., McCabe, C., Pezanowski, S. and Stryker, M. (2012) HerbariaViZ: A Web-Based Client-Server Interface for Mapping & Exploring Flora Observation Data. *Ecological Informatics Elsevier*, **6**, 93-110. <http://dx.doi.org/10.1016/j.ecoinf.2010.09.001>
- [6] Murty, U.S.N. (2012) Epidemiological Modelling of Malaria in Endemic Zones of India. OSDD Malaria Project.
- [7] Economic Policy Business Standard (2009) Uttar Pradesh Seeks MSP for Medicinal Plants. <http://www.business-standard.com>
- [8] Srivastava, R. (2013) Underutilised Fruits: A Potential of Local food Resource. *International Journal of Pharma & Bio*

- Sciences*, **4**, 1301-1305.
- [9] Shankar, R., Deb, S. and Sharma, B.K. (2011) Antimalarial Plants of Northeast India: An Overview. *Journal of Ayurveda & Integrative Medicine (JAIM)*, **3**, 10-16. <http://dx.doi.org/10.4103/0975-9476.93940>
- [10] Bahekar, S. and Kale, R. (2013) Herbal Plants Used for the Treatment of Malaria—A Literature Review. *Journal of Pharmacognosy and Phytochemistry*, **1**, 141-146.
- [11] Pushpangadan, P. and Kumar, B. (2005) Ethnobotany, CBD, WTO and the Biodiversity Act of India. *Ethnobotany*, **17**, 2-12.
- [12] Census of India (2011) Directorate of Census Operations Uttar Pradesh Administrative Atlas 2012. <http://www.census2011.co.in/census/state/uttar+pradesh.html>
- [13] Economics and Statistics Division (2011) Govt. of Uttar Pradesh, India. <http://updes.up.nic.in>
- [14] Srivastava, T.N. (1976) Flora Gorakhpurensis. Today & Tomorrow's Print. & Publ., New Delhi.
- [15] Duthie, J.F. (1960) Flora of Upper Gangetic Plains. Botanical Survey of India Publisher, Vol. I & II.
- [16] Kamaraj, C., et al. (2012) Antimalarial Activities of Medicinal Plants Traditionally Used in the Villages of Dharmapuri Regions of South India. *Journal of Ethnopharmacology*, **141**, 796-802.
- [17] Kumar V. and, Akhtar M. (2013) Ethanomedicinal Solanaceous Plants of Eastern Uttar Pradesh. *Indian Journal of Life Sciences*, **2**, 95-98.
- [18] Mishra, S.B., Dwivedi, S., Shashi, A. and Prajapati, K. (2008) Ethnomedicinal Uses of Some Plant Species by Ethnic and Rural Peoples of the Salem District of Tamilnadu with Special Reference to the Conservation of Vanishing Species. *Ethnobotanical Leaflets*, **12**, 873-887.
- [19] Pandey, A.K., Patra, A.K. and Shukla, P.K. (2005) Medicinal Plants in Satpura Plateau of Madhya Pradesh: Current Status and Future Prospects. *Indian Forester*, **131**, 857-883.
- [20] Pandey, A.K. and Tripathi, N.N. (2010) Diversity and Distribution of Aromatic Plants in Forests of Gorakhpur Division, U.P., India. *Biological Forum: An International Journal*, **2**, 25-33.
- [21] Pandey, A.K. and Tripathi, N.N. (2011) Aromatic Plants of Gorakhpur Division: Their Anti-Mycotic Properties & Medicinal Value. *International Journal of Pharmaceutical Science Review & Research*, **7**, 142-147.
- [22] Prakash, A. (2011) Uses of Some Threatened and Potential Ethnomedicinal Plants among the Tribals of Uttar Pradesh and Utrakhhand in India. *National Conference on Forest Biodiversity: Earth's Living Treasure*, 22 May 2011, 93-99.
- [23] Jain, D.L., Baheti, A.M., Jain, S.R. and Khandelwal, K.R. (2010) Use of Medicinal Plants among Tribes in Satpuda Region of Dhule and Jalgaon Districts of Maharashtra—An Ethnobotanical Survey. *Indian Journal of Traditional Knowledge*, **9**, 152-157.
- [24] MacEachren, A.M., Crawford, S., Akella, M. and Lengerich, G. (2008) Design and Implementation of a Model, Web-Based, GIS-Enabled Cancer Atlas. *The Cartographic Journal*, **45**, 246-260. <http://dx.doi.org/10.1179/174327708X347755>

Scientific Research Publishing (SCIRP) is one of the largest Open Access journal publishers. It is currently publishing more than 200 open access, online, peer-reviewed journals covering a wide range of academic disciplines. SCIRP serves the worldwide academic communities and contributes to the progress and application of science with its publication.

Other selected journals from SCIRP are listed as below. Submit your manuscript to us via either [submit@scirp.org](mailto:submit@scirp.org) or [Online Submission Portal](#).

