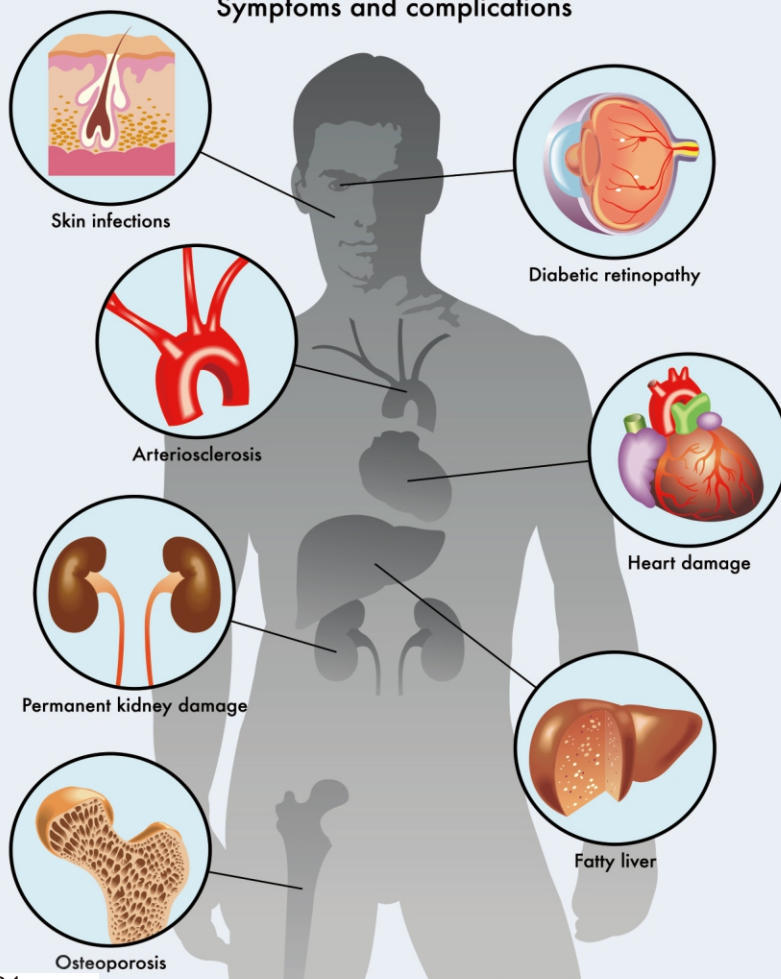


Journal of Diabetes Mellitus

Diabetes Symptoms and complications



ISSN: 2160-5831



Journal Editorial Board

ISSN Print: 2160-5831 ISSN Online: 2160-5858

<http://www.scirp.org/journal/jdm>

Editor-in-Chief

Prof. Sharma S. Prabhakar

Texas Tech University Health Sciences Center, USA

Editorial Board

Dr. Intekhab Ahmed

Thomas Jefferson University, USA

Prof. Bahram H. Arjmandi

Florida State University, USA

Prof. David A. Arnall

East Tennessee State University, USA

Dr. Vivek Bhalla

Stanford University, USA

Prof. Bertrand Cariou

Nantes University Hospital, France

Prof. Dmitry A. Chistyakov

Pirogov Russian State Medical University, Russia

Prof. Fernando Cordido

University of A Coruña, Spain

Prof. Franco Battista Ennio Folli

University of Texas, USA

Prof. Bruce H. Francis

Eisai Inc., USA

Dr. Xianxin Hua

University of Pennsylvania, USA

Prof. Abbas Ali Mansour

Basrah College of Medicine, Iraq

Dr. Felicia V. Nowak

Ohio University, USA

Prof. Kazushi Okamoto

Aichi Prefectural College of Nursing & Health, Japan

Prof. Fernando Ovalle

University of Alabama, USA

Prof. Teresa Quattrin

State University of New York, USA

Prof. Satyan M. Rajbhandari

Chorley & South Ribble Hospital, UK

Prof. Edson da Silva

Federal University of Jequitinhonha and Mucuri Valleys, Brazil

Prof. G. R. Sridhar

Andhra University, India

Prof. Abraham Thomas

Henry Ford Hospital, USA

Table of Contents

Volume 6 Number 4

November 2016

Diabetes and Periodontal Diseases: An Established Two-Way Relationship

C. A. Molina, L. F. Ojeda, M. S. Jiménez, C. M. Portillo, I. S. Olmedo, T. M. Hernández, G. G. Moreno.....209

Cytokines and T Helper Cells in Diabetic Nephropathy Pathogenesis

L. S. Araújo, M. V. da Silva, C. A. da Silva, M. L. R. Monteiro, L. H. de Moraes Pereira, L. P. Rocha,
R. R. M. Corrêa, M. A. Reis, J. R. Machado.....230

Effect of Activities of Daily Living on Self-Care Agency in Individuals with Type 2 Diabetes

N. Istek, P. Karakurt.....247

Genotype-Phenotype Correlation in a MODY 2 Family: An Under-Diagnosed Disease

M. C. Fabiano, A. Verrienti, A. Carbone, M. Sponziello, P. Bellitti, R. Bruno.....263

Gestational Diabetes Mellitus and Its Associated Risk Factors in Pregnant Women at Selected Health Facilities in Kigali City, Rwanda

J. B. Niyibizi, F. Safari, J. B. Ahishakiye, J. B. Habimana, H. Mapira, N. C. Mutuku.....269

Host Factors Alter Effects of Angiotensin-Like Protein 8 on Glucose Homeostasis in Diabetic Mice

S. Liu, E. M. Smith, T. H. King, L. Glenn, M. Trevino, S. H. Park, Y. Machida, C. Villafior,
W. Grzesik, M. A. Morris, Y. Imai, J. L. Nadler.....277

Type 2 Diabetes Wellness Program in a Faith-Based Organization

F. P. Kiamco.....291

Diabetic Ketosis Decompensations at the National Hospital in Benin (West Africa), What Did We Learn about the Precipitating Factors?

C. J. Gninkoun, A. S. C. Alassani, Y. Sagna, P. Adjagba, F. Djrolo.....301

What Happens to Modifiable Cardiovascular Risk Factors over Time in Type 2 Diabetes? Experience from a Developing Country under Standard of Care Conditions

R. S. Zreik, H. I. Salti, I. S. Salti, R. Boukhalil, T. Haddad, M. P. Nasrallah.....307

The Activity of Serum 8-Iso-Prostaglandin F2 α as Oxidative Stress Marker in Patients with Diabetes Mellitus Type 2 and Associated Dyslipidemic Hyperglycemia

M. H. Mukhtar, H. M. El-Emshty, H. S. Alamodi, W. A. Nasif.....318

Journal of Diabetes Mellitus (JDM)

Journal Information

SUBSCRIPTIONS

The *Journal of Diabetes Mellitus* (Online at Scientific Research Publishing, www.SciRP.org) is published quarterly by Scientific Research Publishing, Inc., USA.

Subscription rates:

Print: \$79 per issue.

To subscribe, please contact Journals Subscriptions Department, E-mail: sub@scirp.org

SERVICES

Advertisements

Advertisement Sales Department, E-mail: service@scirp.org

Reprints (minimum quantity 100 copies)

Reprints Co-ordinator, Scientific Research Publishing, Inc., USA.

E-mail: sub@scirp.org

COPYRIGHT

Copyright and reuse rights for the front matter of the journal:

Copyright © 2016 by Scientific Research Publishing Inc.

This work is licensed under the Creative Commons Attribution International License (CC BY).

<http://creativecommons.org/licenses/by/4.0/>

Copyright for individual papers of the journal:

Copyright © 2016 by author(s) and Scientific Research Publishing Inc.

Reuse rights for individual papers:

Note: At SCIRP authors can choose between CC BY and CC BY-NC. Please consult each paper for its reuse rights.

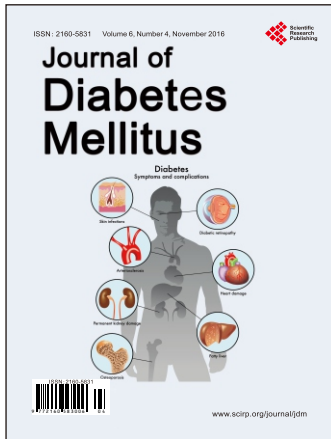
Disclaimer of liability

Statements and opinions expressed in the articles and communications are those of the individual contributors and not the statements and opinion of Scientific Research Publishing, Inc. We assume no responsibility or liability for any damage or injury to persons or property arising out of the use of any materials, instructions, methods or ideas contained herein. We expressly disclaim any implied warranties of merchantability or fitness for a particular purpose. If expert assistance is required, the services of a competent professional person should be sought.

PRODUCTION INFORMATION

For manuscripts that have been accepted for publication, please contact:

E-mail: jdm@scirp.org



Journal of Diabetes Mellitus

ISSN: 2160-5831 (Print) ISSN: 2160-5858 (Online)

<http://www.scirp.org/journal/jdm>

JDM is an international journal dedicated to the current developments of Diabetes Mellitus, the broad scope will also include significant research in the fields of pathology and therapeutic innovations of diabetes itself, both type I and II.

Editor-in-Chief

Prof. Sharma S. Prabhakar

Texas Tech University Health Sciences Center, USA

Editorial Board

Dr. Intekhab Ahmed
 Prof. Bahram H. Arjmandi
 Prof. David A. Arnall
 Dr. Vivek Bhalla
 Prof. Bertrand Cariou
 Prof. Dmitry A. Chistyakov
 Prof. Fernando Cordido

Prof. Franco Battista Ennio Folli
 Prof. Bruce H. Francis
 Dr. Xianxin Hua
 Prof. Abbas Ali Mansour
 Dr. Felicia V. Nowak
 Prof. Kazushi Okamoto
 Prof. Fernando Ovalle

Prof. Teresa Quattrin
 Prof. Satyan M. Rajbhandari
 Prof. Edson da Silva
 Prof. G. R. Sridhar
 Prof. Abraham Thomas

Subject Coverage

All manuscripts submitted to JDM must be previously unpublished and may not be considered for publication elsewhere at any time during review period. Additionally, accepted ones will immediately appear online followed by printed in hard copy. The journal publishes original papers including but not limited to the following fields:

- Cardiovascular Diabetology
- Diabetes and Its Complications
- Diabetes and Metabolic Syndrome
- Diabetes and Metabolism
- Diabetes and Vascular Disease
- Diabetes Care
- Diabetes Education
- Diabetes in Developing Countries
- Diabetes Nursing
- Diabetes Research and Clinical Practice
- Diabetes Therapy
- Diabetes, Obesity and Metabolism
- Diabetic Medicine
- Pancreatic Islet Function and Intermediary Metabolism
- Pathogenesis of Diabetes
- Pediatric Diabetes
- Pharmacological Mechanisms of Drug and Hormone Action
- Primary Care Diabetes
- Therapies for Diabetic Complications

We are also interested in short papers (letters) that clearly address a specific problem, and short survey or position papers that sketch the results or problems on a specific topic. Authors of selected short papers would be invited to write a regular paper on the same topic for future issues of the *JDM*.

Notes for Intending Authors

Submitted papers should not have been previously published nor be currently under consideration for publication elsewhere. Paper submission will be handled electronically through the website. All papers are refereed through a peer review process. Authors are responsible for having their papers checked for style and grammar prior to submission to JDM. For more details about the submissions, please access the website.

Website and E-Mail

<http://www.scirp.org/journal/jdm>

E-mail: jdm@scirp.org