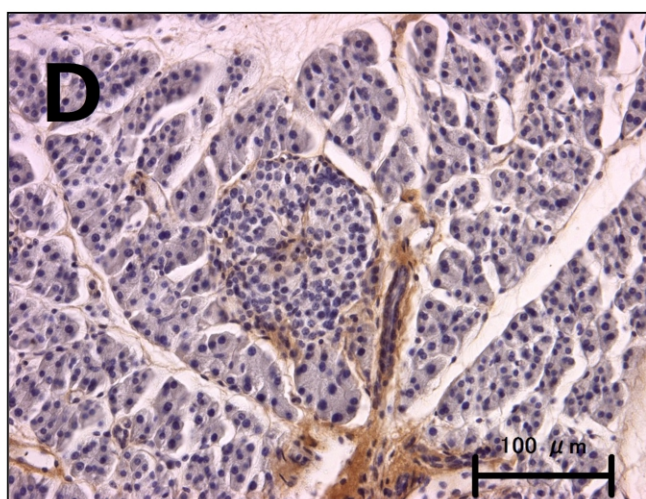
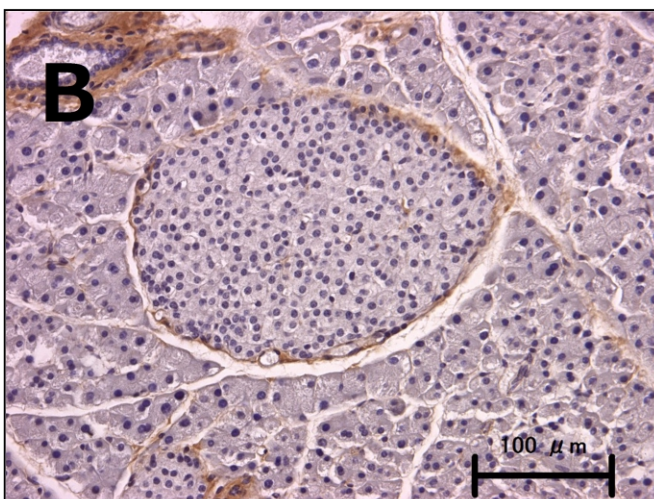
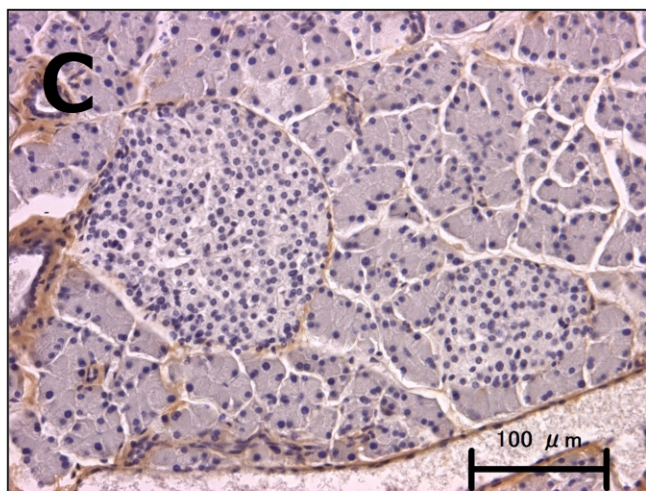
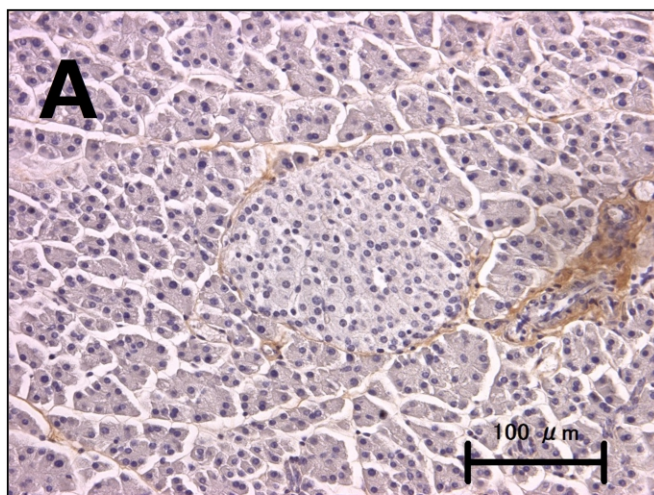


# Journal of Diabetes Mellitus



ISSN: 2160-5831



# Journal Editorial Board

ISSN Print: 2160-5831 ISSN Online: 2160-5858

<http://www.scirp.org/journal/jdm>

---

## Editor-in-Chief

**Prof. Sharma S. Prabhakar**

Texas Tech University Health Sciences Center, USA

## Editorial Board

**Dr. Intekhab Ahmed**

Thomas Jefferson University, USA

**Prof. Bahram H. Arjmandi**

Florida State University, USA

**Prof. David A. Arnall**

East Tennessee State University, USA

**Dr. Vivek Bhalla**

Stanford University, USA

**Prof. Bertrand Cariou**

Nantes University Hospital, France

**Prof. Dmitry A. Chistyakov**

Pirogov Russian State Medical University, Russia

**Prof. Fernando Cordido**

University of A Coruña, Spain

**Prof. Franco Battista Ennio Folli**

University of Texas, USA

**Prof. Paul Albert Fournier**

The University of Western Australia, Australia

**Prof. Bruce H. Francis**

Novartis Pharmaceuticals Corporation, USA

**Dr. Xianxin Hua**

University of Pennsylvania, USA

**Dr. Hongyun Lu**

The Fifth Affiliated Hospital of Sun Yat-sen University, China

**Prof. Abbas Ali Mansour**

Basrah College of Medicine, Iraq

**Dr. Felicia V. Nowak**

Ohio University, USA

**Prof. Kazushi Okamoto**

Aichi Prefectural College of Nursing & Health, Japan

**Prof. Fernando Ovalle**

University of Alabama, USA

**Prof. Teresa Quattrin**

State University of New York, USA

**Prof. Satyan M. Rajbhandari**

Chorley & South Ribble Hospital, UK

**Prof. Eduardo J. Spinedi**

La Plata Medical School, Argentina

**Prof. G. R. Sridhar**

Andhra University, India

**Prof. Abraham Thomas**

Henry Ford Hospital, USA

## Table of Contents

Volume 5    Number 2

May 2015

<b>The Prevalence and Presentation Pattern of Diabetes Mellitus in Patients at Imo State University Teaching Hospital (IMSUTH) Orlu and Imo State Specialist Hospital (IMSSH) Umuguma Owerri (A 10-Year Retrospective Study: 1<sup>st</sup> November 2004 to 31<sup>st</sup> October 2013)</b>	
P. O. U. Adogu, H. N. Chineke, M. U. Ewuzie, O. O. Enwere, N. B. Egenti.....	49
<b>The Effectiveness of Glyburide Compared to Insulin in the Management of Gestational Diabetes Mellitus: A Systematic Review</b>	
J. O. Odiba, M. A. Mabhala.....	58
<b>Association between Hepato-Biliary Status and HbA1C in Type 2 Diabetes Mellitus with Coronary Artery Disease (CAD)</b>	
R. Ramesh, N. AdhishwarKumaran, V. KuzhandaiVelu, R. Reeta, M. SathishBabu, G. Niranjan.....	67
<b>DPP-4 Inhibition Ameliorates Pancreatic <math>\beta</math>-Cell Failure and Improves Glucose Tolerance in the Mouse Model of Wolfram Syndrome</b>	
Y. Tanji, S. Yamaguchi, Y. Ishigaki, H. Katagiri, Y. Oka, H. Ishihara.....	72
<b>Insulin Release from the Beta Cells in Acatalasemic Mice Is Highly Susceptible to Alloxan-Induced Oxidative Stress</b>	
K. Takemoto, W. Doi, K. Kataoka, K. Ishihara, D.-H. Wang, H. Sugiyama, N. Masuoka.....	81
<b>Diabetes in Borgou Department in Benin: Prevalence and Associated Factors</b>	
F. Djrolo, T. Adoukonou, C. Houehanou, J. D. Houinato, D. Houinato.....	90
<b>The Role of Physical Counselling in Patients with Type 2 Diabetes Mellitus: A Systematic Review</b>	
E. Carraro, M. Roppolo, S. Bonetta, G. Gilli.....	97
<b>Metformin Intoxication: A Case of a Combination of Severe Hypoglycaemia and Severe Lactic Acidosis (LA)</b>	
D. Agterhuis, H. Freling, M. Henstra, T. F. Veneman.....	111
<b>Prevalence, Knowledge, Attitude and Practices of Diabetes Mellitus among Jazan Population, Kingdom of Saudi Arabia (KSA)</b>	
I. A. Bani.....	115
<b>Taq1B CETP Polymorphism and Cardiovascular Risk in an Endogamous Population of Diabetic Men: A Study in Santa Rosa Del Conlara, San Luis, Argentina</b>	
S. Siewert, I. Gonzalez, S. Filipuzzi, D. C. Ramirez, M. S. Ojeda.....	123

## **Journal of Diabetes Mellitus (JDM)**

### **Journal Information**

#### **SUBSCRIPTIONS**

The *Journal of Diabetes Mellitus* (Online at Scientific Research Publishing, [www.SciRP.org](http://www.SciRP.org)) is published quarterly by Scientific Research Publishing, Inc., USA.

#### **Subscription rates:**

Print: \$79 per issue.

To subscribe, please contact Journals Subscriptions Department, E-mail: [sub@scirp.org](mailto:sub@scirp.org)

#### **SERVICES**

##### **Advertisements**

Advertisement Sales Department, E-mail: [service@scirp.org](mailto:service@scirp.org)

##### **Reprints (minimum quantity 100 copies)**

Reprints Co-ordinator, Scientific Research Publishing, Inc., USA.

E-mail: [sub@scirp.org](mailto:sub@scirp.org)

#### **COPYRIGHT**

##### **COPYRIGHT AND REUSE RIGHTS FOR THE FRONT MATTER OF THE JOURNAL:**

Copyright © 2015 by Scientific Research Publishing Inc.

This work is licensed under the Creative Commons Attribution International License (CC BY).

<http://creativecommons.org/licenses/by/4.0/>

##### **COPYRIGHT FOR INDIVIDUAL PAPERS OF THE JOURNAL:**

Copyright © 2015 by author(s) and Scientific Research Publishing Inc.

##### **REUSE RIGHTS FOR INDIVIDUAL PAPERS:**

Note: At SCIRP authors can choose between CC BY and CC BY-NC. Please consult each paper for its reuse rights.

##### **DISCLAIMER OF LIABILITY**

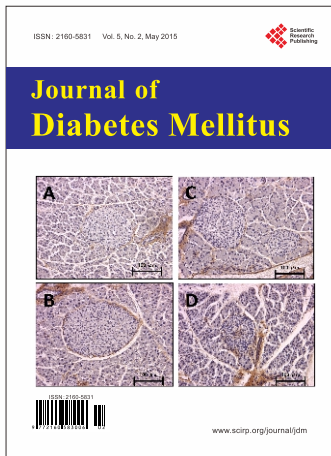
Statements and opinions expressed in the articles and communications are those of the individual contributors and not the statements and opinion of Scientific Research Publishing, Inc. We assume no responsibility or liability for any damage or injury to persons or property arising out of the use of any materials, instructions, methods or ideas contained herein. We expressly disclaim any implied warranties of merchantability or fitness for a particular purpose. If expert assistance is required, the services of a competent professional person should be sought.

#### **PRODUCTION INFORMATION**

For manuscripts that have been accepted for publication, please contact:

E-mail: [jdm@scirp.org](mailto:jdm@scirp.org)





# Journal of Diabetes Mellitus

ISSN: 2160-5831 (Print) ISSN: 2160-5858 (Online)

<http://www.scirp.org/journal/jdm>

JDM is an international journal dedicated to the current developments of Diabetes Mellitus, the broad scope will also include significant research in the fields of pathology and therapeutic innovations of diabetes itself, both type I and II.

## Editor-in-Chief

**Prof. Sharma S. Prabhakar**

Texas Tech University Health Sciences Center, USA

## Editorial Board

Dr. Intekhab Ahmed  
 Prof. Bahram H. Arjmandi  
 Prof. David A. Arnall  
 Dr. Vivek Bhalla  
 Prof. Bertrand Cariou  
 Prof. Dmitry A. Chistyakov  
 Prof. Fernando Cordido

Prof. Franco Battista Ennio Folli  
 Prof. Paul Albert Fournier  
 Prof. Bruce H. Francis  
 Dr. Xianxin Hua  
 Dr. Hongyun Lu  
 Prof. Abbas Ali Mansour  
 Dr. Felicia V. Nowak

Prof. Kazushi Okamoto  
 Prof. Fernando Ovalle  
 Prof. Teresa Quattrin  
 Prof. Satyan M. Rajbhandari  
 Prof. Eduardo J. Spinedi  
 Prof. G. R. Sridhar  
 Prof. Abraham Thomas

## Subject Coverage

All manuscripts submitted to JDM must be previously unpublished and may not be considered for publication elsewhere at any time during review period. Additionally, accepted ones will immediately appear online followed by printed in hard copy. The journal publishes original papers including but not limited to the following fields:

- Cardiovascular Diabetology
- Diabetes and Its Complications
- Diabetes and Metabolic Syndrome
- Diabetes and Metabolism
- Diabetes and Vascular Disease
- Diabetes Care
- Diabetes Education
- Diabetes in Developing Countries
- Diabetes Nursing
- Diabetes Research and Clinical Practice
- Diabetes Therapy
- Diabetes, Obesity and Metabolism
- Diabetic Medicine
- Pancreatic Islet Function and Intermediary Metabolism
- Pathogenesis of Diabetes
- Pediatric Diabetes
- Pharmacological Mechanisms of Drug and Hormone Action
- Primary Care Diabetes
- Therapies for Diabetic Complications

We are also interested in short papers (letters) that clearly address a specific problem, and short survey or position papers that sketch the results or problems on a specific topic. Authors of selected short papers would be invited to write a regular paper on the same topic for future issues of the *JDM*.

## Notes for Intending Authors

Submitted papers should not have been previously published nor be currently under consideration for publication elsewhere. Paper submission will be handled electronically through the website. All papers are refereed through a peer review process. Authors are responsible for having their papers checked for style and grammar prior to submission to JDM. For more details about the submissions, please access the website.

## Website and E-Mail

<http://www.scirp.org/journal/jdm>

E-mail: [jdm@scirp.org](mailto:jdm@scirp.org)