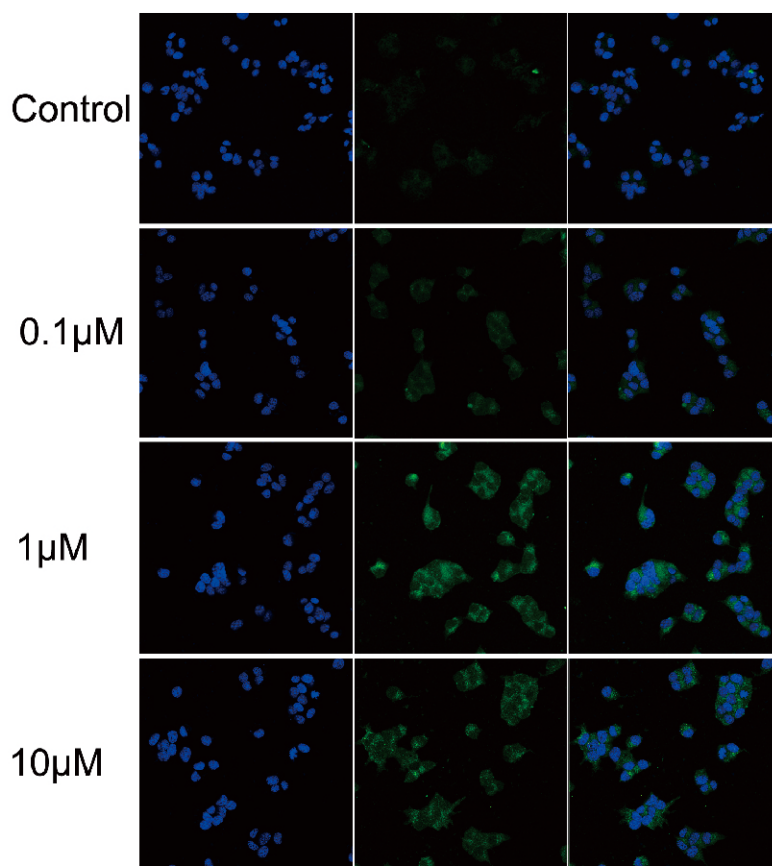


# Journal of Diabetes Mellitus



ISSN: 2160-5831



# Journal Editorial Board

ISSN Print: 2160-5831 ISSN Online: 2160-5858

<http://www.scirp.org/journal/jdm/>

---

## Editor-in-Chief

**Prof. Sharma S. Prabhakar**

Texas Tech University Health Sciences Center, USA

## Editorial Board

**Dr. Intekhab Ahmed**

Thomas Jefferson University, USA

**Prof. Bahram H. Arjmandi**

Florida State University, USA

**Prof. David A. Arnall**

East Tennessee State University, USA

**Dr. Vivek Bhalla**

Stanford University, USA

**Prof. Bertrand Cariou**

Nantes University Hospital, France

**Prof. Dmitry A. Chistyakov**

Pirogov Russian State Medical University, Russia

**Prof. Fernando Cordido**

University of A Coruña, Spain

**Prof. Franco Battista Ennio Folli**

University of Texas, USA

**Prof. Paul Albert Fournier**

The University of Western Australia, Australia

**Dr. Bruce H. Francis**

Novartis Pharmaceuticals Corporation, USA

**Dr. Xianxin Hua**

University of Pennsylvania, USA

**Dr. Hongyun Lu**

The Fifth Affiliated Hospital of Sun Yat-sen University, China

**Dr. Abbas Ali Mansour**

Basrah College of Medicine, Iraq

**Dr. Felicia V. Nowak**

Ohio University, USA

**Prof. Kazushi Okamoto**

Aichi Prefectural College of Nursing & Health, Japan

**Prof. Fernando Ovalle**

University of Alabama, USA

**Prof. Teresa Quattrin**

State University of New York, USA

**Prof. Satyan M. Rajbhandari**

Chorley & South Ribble Hospital, UK

**Dr. Eduardo J. Spinedi**

Neuroendocrine Unit, Argentina

**Dr. G. R. Sridhar**

Andhra University, India

**Dr. Abraham Thomas**

Henry Ford Hospital, USA

## TABLE OF CONTENTS

Volume 3, Number 4, November 2013

<b>The number of antihypertensive agents simply reflects the grade and the risk of atherosclerosis in patients with type 2 diabetes mellitus</b>	
H. Ito, M. Abe, M. Shinozaki, T. Omoto, S. Nishio, M. Furusho, S. Antoku, M. Mifune, M. Togane, T. Sanaka.....	161
<b>Serum C reactive protein level in type 2 diabetes mellitus patients attending diabetic clinic in Benin City, Nigeria</b>	
A. F. Ehiaghe, D. E. Agbonlahor, Y. M. Tاتفeng, F. Onikepe, F. E. Oviasogie, J. I. Ehiaghe.....	168
<b>Hyperglycemia promotes overexpression of <i>SR-BII</i> isoform of the scavenger receptor class B type I in type 2 diabetes mellitus: A study in Juana Koslay City, San Luis, Argentina</b>	
G. V. Mendoza, S. Siewert, I. González, M. C. D. Vedova, G. Fernandez, M. S. Ojeda.....	172
<b>Prevention of type 2 diabetes in urban American Indian/Alaskan Native communities: The Life in BALANCE pilot study</b>	
D. C. Benyshek, M. Chino, C. Dodge-Francis, T. O. Begay, H. B. Jin, C. Giordano.....	184
<b>Analysis of the glucokinase gene in Iranian families with maturity onset diabetes of the young</b>	
M. Javadi, H. Rafatpanah, S. M. Taghavi, J. Tavakolafshari, R. Ganjali, N. Valizadeh, S. S. Fatemi.....	192
<b>How low do we fall to lower hemoglobin A1c? SGLT2 inhibitors: Effective drugs or expensive toxins!</b>	
U. M. Kabadi.....	199
<b>The effect of controlling the ABC's of diabetes on cardiovascular disease in a community-based endocrinology practice</b>	
S. Varma, G. A. Piatt.....	202
<b>Stroke in type 2 diabetes mellitus patients admitted to emergency unit in Central African country (Congo): Preliminary findings</b>	
B. F. Ellenga-Mbolla, H. G. Monabeka, P. M. Ossou-Nguet, G. F. Otiobanda, K. C. M. Guimbi, T. R. Gombet, S.-G. Kimbally-Kaky, B. L. Mbenza.....	208
<b>Insulin receptor substrate gene polymorphisms are associated with metabolic syndrome but not with its components</b>	
F. Sarac, A. Berdeli, S. Sarac, S. Savas, M. Atan, F. Akcicek.....	214
<b>Anti-diabetic and antioxidant effects of virgin coconut oil in alloxan induced diabetic male Sprague Dawley rats</b>	
B. Iranloye, G. Oludare, M. Olubiyi.....	221
<b>Adipocytes modulate vascular smooth muscle cells migration potential through their secretions</b>	
S. El Akoum, I. Cloutier, J.-F. Tanguay.....	227
<b>The association of depression and perceived stress with beta cell function between African and Haitian Americans with and without type 2 diabetes</b>	
F. G. Huffman, M. Vallasciani, J. A. Vaccaro, J. C. Exebio, G. G. Zarini, A. Nayer, S. Ajabshir.....	236
<b>Compared with insulin glargine, insulin degludec narrows the day-to-day variability in the glucose-lowering effect rather than lowering blood glucose levels</b>	
S. Ogawa, K. Nako, M. Okamura, M. Senda, T. Sakamoto, S. Ito.....	244

The figure on the front cover is from the article published in Journal of Diabetes Mellitus, 2013, Vol. 3, No. 3, pp. 122-128 by Hua Su, *et al.*

# **Journal of Diabetes Mellitus (JDM)**

## **Journal Information**

### **SUBSCRIPTIONS**

The *Journal of Diabetes Mellitus* (Online at Scientific Research Publishing, [www.SciRP.org](http://www.SciRP.org)) is published quarterly by Scientific Research Publishing, Inc., USA.

#### **Subscription rates:**

Print: \$59 per issue.

To subscribe, please contact Journals Subscriptions Department, E-mail: [sub@scirp.org](mailto:sub@scirp.org)

### **SERVICES**

#### **Advertisements**

Advertisement Sales Department, E-mail: [service@scirp.org](mailto:service@scirp.org)

#### **Reprints (minimum quantity 100 copies)**

Reprints Co-ordinator, Scientific Research Publishing, Inc., USA.

E-mail: [sub@scirp.org](mailto:sub@scirp.org)

### **COPYRIGHT**

Copyright©2013 Scientific Research Publishing, Inc.

All Rights Reserved. No part of this publication may be reproduced, stored in a retrieval system, or transmitted, in any form or by any means, electronic, mechanical, photocopying, recording, scanning or otherwise, except as described below, without the permission in writing of the Publisher.

Copying of articles is not permitted except for personal and internal use, to the extent permitted by national copyright law, or under the terms of a license issued by the national Reproduction Rights Organization.

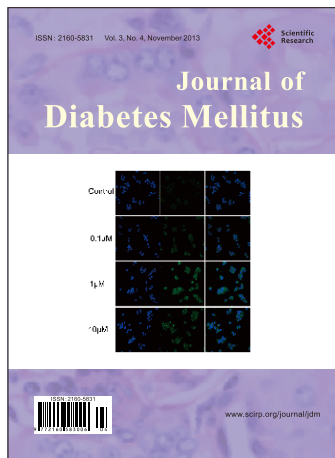
Requests for permission for other kinds of copying, such as copying for general distribution, for advertising or promotional purposes, for creating new collective works or for resale, and other enquiries should be addressed to the Publisher.

Statements and opinions expressed in the articles and communications are those of the individual contributors and not the statements and opinion of Scientific Research Publishing, Inc. We assume no responsibility or liability for any damage or injury to persons or property arising out of the use of any materials, instructions, methods or ideas contained herein. We expressly disclaim any implied warranties of merchantability or fitness for a particular purpose. If expert assistance is required, the services of a competent professional person should be sought.

### **PRODUCTION INFORMATION**

For manuscripts that have been accepted for publication, please contact:

E-mail: [jdm@scirp.org](mailto:jdm@scirp.org)



# Journal of Diabetes Mellitus

ISSN: 2160-5831 (Print) ISSN: 2160-5858 (Online)

<http://www.scirp.org/journal/jdm>

JDM is an international journal dedicated to the current developments of Diabetes Mellitus, the broad scope will also include significant research in the fields of pathology and therapeutic innovations of diabetes itself, both type I and II.

## Editor-in-Chief

**Prof. Sharma S. Prabhakar**

Texas Tech University Health Sciences Center, USA

## Editorial Board

Dr. Intekhab Ahmed  
 Prof. Bahram H. Arjmandi  
 Prof. David A. Arnall  
 Dr. Vivek Bhalla  
 Prof. Bertrand Cariou  
 Prof. Dmitry A. Chistyakov  
 Prof. Fernando Cordido

Prof. Franco Battista Ennio Folli  
 Prof. Paul Albert Fournier  
 Dr. Bruce H. Francis  
 Dr. Xianxin Hua  
 Dr. Hongyun Lu  
 Dr. Abbas Ali Mansour  
 Dr. Felicia V. Nowak

Prof. Kazushi Okamoto  
 Prof. Fernando Ovalle  
 Prof. Teresa Quattrin  
 Prof. Satyan M. Rajbhandari  
 Dr. Eduardo J. Spinedi  
 Dr. G. R. Sridhar  
 Dr. Abraham Thomas

## Subject Coverage

All manuscripts submitted to JDM must be previously unpublished and may not be considered for publication elsewhere at any time during review period. Additionally, accepted ones will immediately appear online followed by printed in hard copy. The journal publishes original papers including but not limited to the following fields:

- Cardiovascular Diabetology
- Diabetes and Its Complications
- Diabetes and Metabolic Syndrome
- Diabetes and Metabolism
- Diabetes and Vascular Disease
- Diabetes Care
- Diabetes Education
- Diabetes in Developing Countries
- Diabetes Nursing
- Diabetes Research and Clinical Practice
- Diabetes Therapy
- Diabetes, Obesity and Metabolism
- Diabetic Medicine
- Pancreatic Islet Function and Intermediary Metabolism
- Pathogenesis of Diabetes
- Pediatric Diabetes
- Pharmacological Mechanisms of Drug and Hormone Action
- Primary Care Diabetes
- Therapies for Diabetic Complications

We are also interested in short papers (letters) that clearly address a specific problem, and short survey or position papers that sketch the results or problems on a specific topic. Authors of selected short papers would be invited to write a regular paper on the same topic for future issues of the *JDM*.

## Notes for Intending Authors

Submitted papers should not have been previously published nor be currently under consideration for publication elsewhere. Paper submission will be handled electronically through the website. All papers are refereed through a peer review process. Authors are responsible for having their papers checked for style and grammar prior to submission to JDM. For more details about the submissions, please access the website.

## Website and E-Mail

<http://www.scirp.org/journal/jdm>

E-mail: [jdm@scirp.org](mailto:jdm@scirp.org)