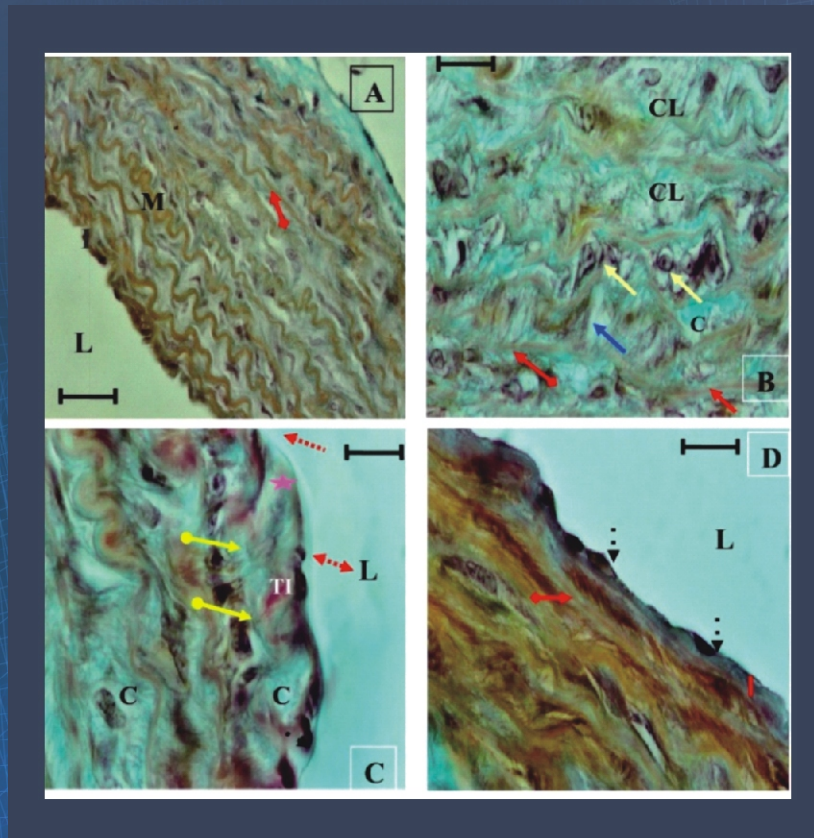


Journal of Diabetes Mellitus



ISSN: 2160-5831



Journal Editorial Board

ISSN Print: 2160-5831 ISSN Online: 2160-5858

<http://www.scirp.org/journal/jdm/>

Editor-in-Chief

Prof. Sharma S. Prabhakar

Texas Tech University Health Sciences Center, USA

Editorial Board

Prof. Amira Abd El Moneam Adly

Ain Shams University Children Hospital, Egypt

Dr. Intekhab Ahmed

Thomas Jefferson University, USA

Prof. Bahram H. Arjmandi

Florida State University, USA

Prof. David A. Arnall

East Tennessee State University, USA

Dr. Vivek Bhalla

Stanford University, USA

Prof. Bertrand Cariou

Nantes University Hospital, France

Prof. Dmitry A. Chistyakov

National Research Center GosNIIgenetika, Russia

Prof. Fernando Cordido

University of A Coruña, Spain

Prof. Franco Battista Ennio Folli

University of Texas, USA

Prof. Paul Albert Fournier

The University of Western Australia, Australia

Dr. Bruce H. Francis

Novartis Pharmaceuticals Corporation, USA

Dr. Xianxin Hua

University of Pennsylvania, USA

Dr. Hongyun Lu

Sun Yat-sen University, China

Dr. Abbas Ali Mansour

Basrah College of Medicine, Iraq

Dr. Felicia V. Nowak

Ohio University, USA

Prof. Kazushi Okamoto

Aichi Prefectural College of Nursing & Health, Japan

Dr. Fernando Ovalle

University of Alabama, USA

Prof. Teresa Quattrin

State University of New York, USA

Prof. Satyan M. Rajbhandari

Chorley & South Ribble Hospital, UK

Dr. Eduardo J. Spinedi

Neuroendocrine Unit, Argentina

Dr. G. R. Sridhar

Andhra University, India

Dr. Abraham Thomas

Henry Ford Hospital, USA

Editorial Assistant

Alline Xiao

Scientific Research Publishing, USA Email: jdm@scirp.org

TABLE OF CONTENTS

Volume 2, Number 1, February 2012

Type 2 diabetes with good glycemic control have improved insulin response and lower non-esterified fatty acid level after a meal challenge	
N. Yahaya, W. M. Kyi, N. Mohd Noor, W. M. Wan Bebakar.....	1
Science of eating time: A novel chronophysiological approach to optimize glucose-insulin dynamics and health	
A. Nikkhah.....	8
Changes in body composition of women at different age decades and its relation with to metabolic risks	
A. Özenoğlu, S. Uğurlu, G. Can, A. Tokay.....	12
Effects of fluctuating glucose concentrations on oxidative metabolism of glucose in cultured neurons and astroglia	
S. Takahashi, T. Abe, Y. Izawa, N. Suzuki.....	19
Islet protection and amelioration of diabetes type 2 in <i>Psammomys obesus</i> by treatment with cannabidiol	
Z. Ehud, W. Lola, R. Itamar, P. Natan, Y. Zhanna, G. Ruth.....	27
Decreased bone mineral density in young male veterans on Pioglitazone	
S. Yaturu, J. Davis, R. Shi.....	35
Effect of beverages with different protein profiles on postprandial blood glucose response in overweight and obese men	
D. Fernandez-Raudales, L. K. Diaz-Rios, J. Lotton, K. Chapman-Novakofski, E. G. de Mejia.....	40
Systemic thrombin generation by glucose	
M. Mohrez, H. Harb, A. Spies, H. Renz, T. W. Stief.....	47
Impaired glucose tolerance (IGT) to frank diabetes: Dietary manipulations in WNIN/GR-Ob rats	
N. Harishankar, E. Seshadri, S. Kalyanasundaram, N. Giridharan.....	52
Impact of glucotoxicity induced <i>in vivo</i> and <i>in vitro</i> in <i>Psammomys obesus</i>	
B. Sihem, S. Leila, O. Kheira, N. Samia, H. Nadjiba, B. Saliha, S. Abdelhamid, K. Ghouti, H. El Mahdi, B. Yasmina, A. B. Souhila.....	59
Methylmalonic acid as an indicator of vitamin B12 deficiency in patients on metformin	
N. Shtaynberg, M. Singh, P. Sohn, M. Goldman, N. Cohen.....	72
Dysfunction of the peripheral and central auditory pathway in patients with type 1 diabetes mellitus	
L. C. Fernandes, L. Casais-Silva, A. M. Ladeia.....	76
Effect of quercetin on postprandial glucose excursion after mono- and disaccharides challenge in normal and diabetic rats	
S. A. Hussain, Z. A. Ahmed, T. O. Mahwi, T. A. Aziz.....	82
<i>Mycobacterium avium</i> subspecies paratuberculosis—An environmental trigger of type 1 diabetes mellitus	
C. T. Dow.....	88

Reduced endogenous insulin secretion in diabetic patients with low-titer positive antibodies against GAD	
Y. Takeuchi, H. Ito, K. Oshikiri, S. Antoku, M. Abe, M. Mifune, M. Togane, M. Kato.....	96
From insulin detemir to glargine: Effect on glycemic control and psychological wellbeing in patients with diabetes mellitus type 2 in daily practice	
T. F. Veneman, F. E. M. G. Storms, I. A. Eland, P. K. P. Bouter.....	101
External validation of Indian diabetes risk score in a rural community of central India	
B. Taksande, M. Ambade, R. Joshi.....	109
Effect of metformin and Pioglitazone on insulin dose reduction in type 2 diabetes mellitus patients: An open level comparative prospective study	
G. Mazumdar, B. Swaika, A. Dasgupta.....	114
Exenatide efficacy in unselected patients: Comparison with clinical trials	
C. Collet-Gaudillat, G. Petit-Aubert, V. Desforges-Bullet, J. P. Beressi.....	118
<i>Vibrio vulnificus</i> septicemia and necrotizing fasciitis in the patients with liver cirrhosis and diabetes mellitus	
H. Ito, A. Shibayama, M. Abe, S. Antoku, H. Nawata, M. Isonishi, M. Fujita, S. Kato.....	122
The effect of weight loss on fasting blood sugars and hemoglobin A1c in overweight and obese diabetics and non-diabetics	
J. Stanford, M. Kaiser, E. Ablah, F. Dong, B. Paull-Forney, J. Early.....	126
Comparative study between the effect of <i>Momordica charantia</i> (wild and hybrid variety) on hypoglycemic and hypolipidemic activity of alloxan induced type 2 diabetic long-evans rats	
S. K. Saha, Md. E. Haque, D. Islam, Md. M. Rahman, Md. R. Islam, A. Parvin, S. Rahman.....	131
Effect of the administration of <i>Psidium guava</i> leaves on blood glucose, lipid profiles and sensitivity of the vascular mesenteric bed to Phenylephrine in streptozotocin-induced diabetic rats	
A. H. M. Bahrani, H. Zaheri, N. Soltani, F. Kharazmi, M. Keshavarz, M. Kamalinajad.....	138
Carvedilol vs. metoprolol: A comparison of effects on endothelial function and oxidative stress in response to acute hyperglycemia in patients with type 2 diabetes and hypertension	
K. Colleran, L. Aguirre, M. R. Burge.....	146

The figure on the front cover is from the article published in Journal of Diabetes Mellitus, 2012, Vol. 2, No. 1, pp. 59-71 by Berdja Sihem, *et al.*

Journal of Diabetes Mellitus (JDM)

Journal Information

SUBSCRIPTIONS

The *Journal of Diabetes Mellitus* (Online at Scientific Research Publishing, www.SciRP.org) is published quarterly by Scientific Research Publishing, Inc., USA.

Subscription rates:

Print: \$39 per issue.

To subscribe, please contact Journals Subscriptions Department, E-mail: sub@scirp.org

SERVICES

Advertisements

Advertisement Sales Department, E-mail: service@scirp.org

Reprints (minimum quantity 100 copies)

Reprints Co-ordinator, Scientific Research Publishing, Inc., USA.

E-mail: sub@scirp.org

COPYRIGHT

Copyright©2012 Scientific Research Publishing, Inc.

All Rights Reserved. No part of this publication may be reproduced, stored in a retrieval system, or transmitted, in any form or by any means, electronic, mechanical, photocopying, recording, scanning or otherwise, except as described below, without the permission in writing of the Publisher.

Copying of articles is not permitted except for personal and internal use, to the extent permitted by national copyright law, or under the terms of a license issued by the national Reproduction Rights Organization.

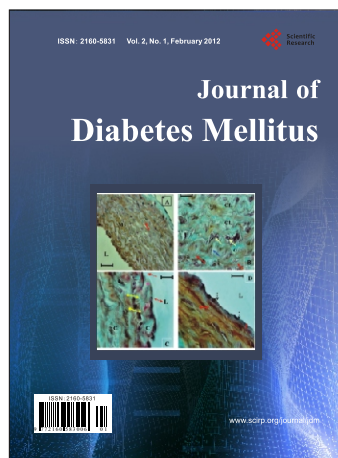
Requests for permission for other kinds of copying, such as copying for general distribution, for advertising or promotional purposes, for creating new collective works or for resale, and other enquiries should be addressed to the Publisher.

Statements and opinions expressed in the articles and communications are those of the individual contributors and not the statements and opinion of Scientific Research Publishing, Inc. We assume no responsibility or liability for any damage or injury to persons or property arising out of the use of any materials, instructions, methods or ideas contained herein. We expressly disclaim any implied warranties of merchantability or fitness for a particular purpose. If expert assistance is required, the services of a competent professional person should be sought.

PRODUCTION INFORMATION

For manuscripts that have been accepted for publication, please contact:

E-mail: jdm@scirp.org



Journal of Diabetes Mellitus

ISSN: 2160-5831 (Print) ISSN: 2160-5858 (Online)

<http://www.scirp.org/journal/jdm>

JDM is an international journal dedicated to the current developments of Diabetes Mellitus, the broad scope will also include significant research in the fields of pathology and therapeutic innovations of diabetes itself, both type I and II.

Editor-in-Chief

Prof. Sharma S. Prabhakar

Texas Tech University Health Sciences Center, USA

Editorial Board

Prof. Amira Abd El Moneam Adly
Dr. Intekhab Ahmed
Prof. Bahram H. Arjmandi
Prof. David A. Arnall
Dr. Vivek Bhalla
Prof. Bertrand Cariou
Prof. Dmitry A. Chistyakov
Prof. Fernando Cordido

Prof. Franco Battista Ennio Folli
Prof. Paul Albert Fournier
Dr. Bruce H. Francis
Dr. Xianxin Hua
Dr. Hongyun Lu
Dr. Abbas Ali Mansour
Dr. Felicia V. Nowak
Prof. Kazushi Okamoto

Dr. Fernando Ovalle
Prof. Teresa Quattrin
Prof. Satyan M. Rajbhandari
Dr. Eduardo J. Spinedi
Dr. G. R. Sridhar
Dr. Abraham Thomas

Subject Coverage

All manuscripts submitted to JDM must be previously unpublished and may not be considered for publication elsewhere at any time during review period. Additionally, accepted ones will immediately appear online followed by printed in hard copy. The journal publishes original papers including but not limited to the following fields:

- Cardiovascular Diabetology
- Diabetes and Its Complications
- Diabetes and Metabolic Syndrome
- Diabetes and Metabolism
- Diabetes Care
- Diabetes Education
- Diabetes in Developing Countries
- Diabetes Nursing
- Diabetes, Obesity and Metabolism
- Diabetes Research and Clinical Practice
- Diabetes Therapy
- Diabetic Medicine
- Diabetes & Vascular Disease
- Pancreatic Islet Function and Intermediary Metabolism
- Pathogenesis of Diabetes
- Pediatric Diabetes
- Pharmacological Mechanisms of Drug and Hormone Action
- Primary Care Diabetes
- Therapies for Diabetic Complications

We are also interested in short papers (letters) that clearly address a specific problem, and short survey or position papers that sketch the results or problems on a specific topic. Authors of selected short papers would be invited to write a regular paper on the same topic for future issues of the *JDM*.

Notes for Intending Authors

Submitted papers should not have been previously published nor be currently under consideration for publication elsewhere. Paper submission will be handled electronically through the website. All papers are refereed through a peer review process. Authors are responsible for having their papers checked for style and grammar prior to submission to JDM. For more details about the submissions, please access the website.

Website and E-Mail

<http://www.scirp.org/journal/jdm>

E-mail: jdm@scirp.org