

# Research on Railway Passenger Flow Prediction Method Based on GA Improved BP Neural Network

Jian Zhang\*, Weihao Guo

School of Science, Beijing University of Civil Engineering and Architecture, Beijing, China

Email: \*zhangjian@bucea.edu.cn

**How to cite this paper:** Zhang, J. and Guo, W.H. (2019) Research on Railway Passenger Flow Prediction Method Based on GA Improved BP Neural Network. *Journal of Computer and Communications*, 7, 283-292. <https://doi.org/10.4236/jcc.2019.77023>

**Received:** June 20, 2019

**Accepted:** July 28, 2019

**Published:** July 31, 2019

---

## Abstract

This paper chooses passenger flow data of some stations in China from January 2015 to March 2016, and the time series prediction model of BP neural network for railway passenger flow is established. But because of its slow convergence speed and easily falling into local optimal solution of the problem, we propose to improve the time series model of BP neural network by genetic algorithm to predict railway passenger flow. Experimental results show that the improved method has higher prediction accuracy and better nonlinear fitting ability.

## Keywords

Railway Passenger Flow, Prediction, BP Neural Network, Genetic Algorithm

---

## 1. Introduction

With the Notice of the National Development and Reform Commission of the People's Republic of China on the reform and improvement of the passenger fare policy for high-speed trains in February 2016, the high-speed train fares will be priced by the railway headquarters [1]. In order to maintain market competitiveness and maximize profits, the railway sector needs to understand the daily passenger traffic, the off-season fluctuation index and the specific conditions of hot and cold lines. Therefore, it is necessary to predict the passenger flow of the railway.

However, railway passenger flow is affected by many factors, such as the rapid growth of railway passenger flow during the Spring Festival, which leads to the inability of railway capacity to meet customer demand for passenger transport, and also brings great pressure to railway passenger transport organizations.

During non-holiday period, some unpopular line occupancy rate is insufficient, resulting in the waste of railway vehicles. Therefore, the prediction of railway passenger flow is of great significance for improving the efficiency of railway passenger transport by helping to set reasonable prices, improving the organization mode of passenger stations, optimizing the allocation of railway vehicle resources and improving the service capacity of passenger transport equipment [2].

This paper aims to study the application of BP neural network and its improved algorithm in railway passenger flow prediction.

## 2. Domestic and Foreign Research Status

At present, railway travel in China is the first choice of transportation mode for the people. Experts hope to optimize vehicle dispatch and guide the development of the railway industry by analyzing the passenger flow data of a certain area for several consecutive years.

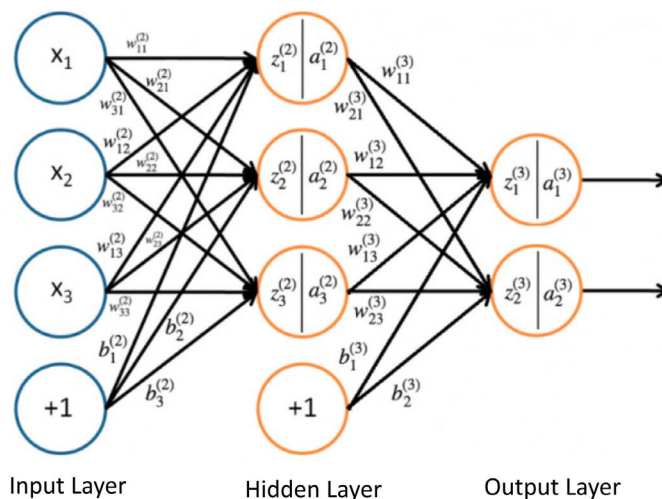
In recent years, Wu Xinhui put forward “by adopting genetic algorithm to optimize parameters of RBF neural network, a better solution to the RBF neural network is easy to fall into local optimum problem, in the railway passenger traffic forecasting, through the comparison shows that GA-RBFNN model to predict the results of the stability and convergence speed, high precision, good maneuverability, the railway enterprise management decision has a good guiding significance [3]”; Chen Peng, Sun Quanxin proposed that the railway passenger traffic forecasting method based on the gray CM(1,1) Markov process and fuzzy clustering method is a new forecasting method and is a method based on the forecast of the total traffic volume of the Chinese railway network. The prediction effect on a particular line may not be ideal, but it has a unique advantage in predicting the overall passenger volume [4] [5]. This method of forecasting takes into account the random change forecast and growth trend forecast of railway passenger traffic. Considering that it is more in line with the actual situation of railway passenger transport and can guide passenger transport of railways more effectively. Wang Jianxiong *et al.* proposed a two-layer orthogonal neural network passenger flow prediction model based on time series feature analysis. The core idea is to process input information according to feature layering in the initial stage of network learning instead of mixing all input information. The Gram-Schmidt transform is used to add a projection layer to the output of the hidden layer, thereby reducing unnecessary network connections during training [6]. This model is more advantageous in solving problems encountered in short-term railway passenger traffic forecasting; Zhou Huiren and Zheng Zheng used the least squares support vector machine regression method to predict the railway passenger transport market. Firstly, the genetic algorithm was used to determine the optimal number of support vector machines, and then the time series based prediction model was established. It can be seen from the prediction results that The method has higher precision in the railway passenger transport market forecast [7]; In the process of using this method, the time required is relatively short, and the use of genetic algorithm to optimize the relevant parame-

ters can effectively avoid the phenomenon of over-fitting and under-fitting, and has strong practical ability and accurate characteristics; Gui Wenlin and Han Zhaozhou applied the Tramo/Seats seasonal adjustment model for the first time in the field of passenger traffic forecasting in China. The seasonal adjustment model introduced a pre-adjustment module to pre-adjust the trading days and outliers to make the factor decomposition more accurate: The history and future trends and seasonal characteristics of passenger traffic are analyzed, and the Holt-Winters model can only obtain the above characteristics of the final period [8]. Although this model has high accuracy, it does not include holidays, especially like such a holiday as the Spring Festival, due to the existence of the Spring Festival, makes such a model unable to better predict the passenger flow and then conduct a comprehensive guiding role, and can only guide the normal railway passenger transport operation.

Based on the characteristics of genetic algorithm, this paper proposes a BP neural network time series algorithm based on GA, and establishes a railway passenger flow prediction model.

### 3. BP Neural Network Time Series Prediction Model

In general, the most common BP neural network topology is a three-layer structure (shown in **Figure 1**), an input layer, an output layer, and a hidden layer in the middle. In this paper, the sigmoid function is used as the activation function in the hidden layer, and the tansig function is used as the activation function in the output layer. The traffic of the previous  $n$  years is selected to predict the traffic volume of the next year, and the time series model is established. When determining the number of hidden layer nodes, the selection scheme is to select the number of hidden layer nodes as little as possible, simplify the structure of the BP neural network, and obtain errors in the network training through the training set; then slowly increase the number of nodes in the hidden layer and continue training. Obtain an error and repeat the above steps until the error is no



**Figure 1.** BP neural network structure.

longer significantly reduced. Finally, the number of hidden layer nodes selected by the test is 6 [9] [10].

Because the BP algorithm is a faster gradient descent algorithm, it is easy to fall into the local minimum problem and is improved by GA.

#### 4. GA Improved BP Neural Network Prediction Model

Genetic algorithm is a global search algorithm [11]. Firstly, all individuals in a population are randomly initialized. Each individual is a set of initial thresholds and weights, and the fitness value of each individual is obtained. The genetic algorithm is used to make the population evolve in constant iterations, and finally get the most. An excellent individual, as the initial threshold and weight of the neural network. This not only makes up for the shortcomings of randomly selecting the initial threshold and weight on the ordinary BP neural network, but also can fully exert the mapping ability of BP neural network, so that it has strong learning ability and faster convergence (Figure 2).

According to the above, it has been determined that the BP neural network structure is  $4 - 6 - 1$ , a total of  $6 + 1 = 7$  thresholds,  $4 \times 6 + 6 \times 1 = 30$  weights. Since the genetic algorithm uses real coding, the length of each individual in the population is  $30 + 7 = 37$ .

Random initialization of these individuals according to the real number coding method is equivalent to randomly initializing the initial threshold and weight of a batch of neural networks, and then calculating the fitness values of these

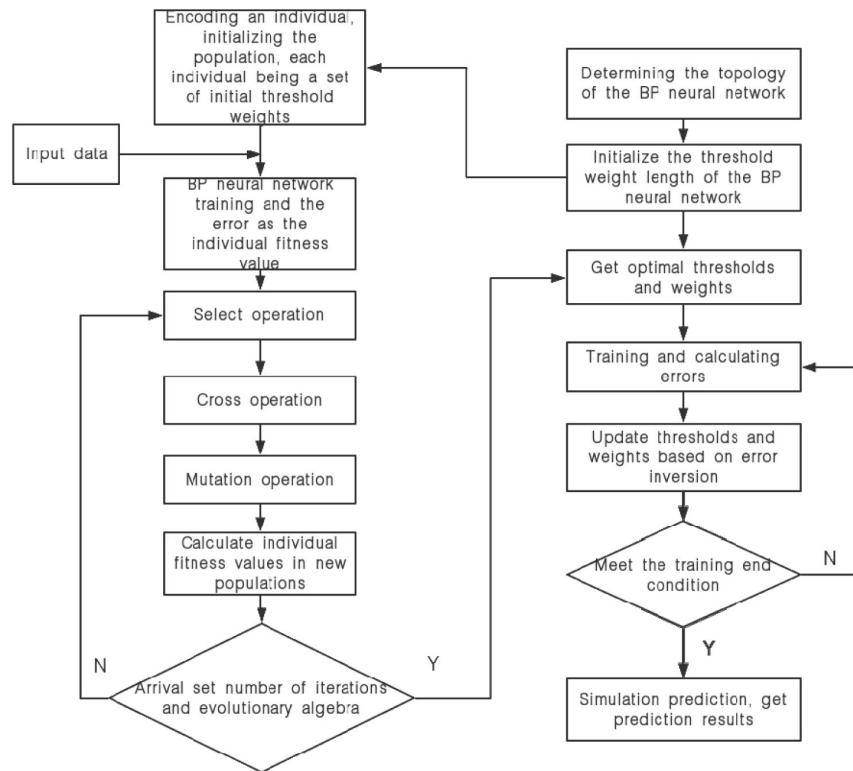


Figure 2. GA improved BP neural network prediction algorithm flow chart.

individuals, based on the fitness value, and selecting them one by one. The crossover and mutation operations evolve the population until the number of evolution iterations is reached, and the individuals with the highest fitness within the final population are used as the initial threshold and weight of the optimized BP neural network.

The training set is substituted into GA improved BP neural network training, and the test set is used for testing and simulation prediction.

## 5. Experiment

### 5.1. Preliminary Analysis of Data

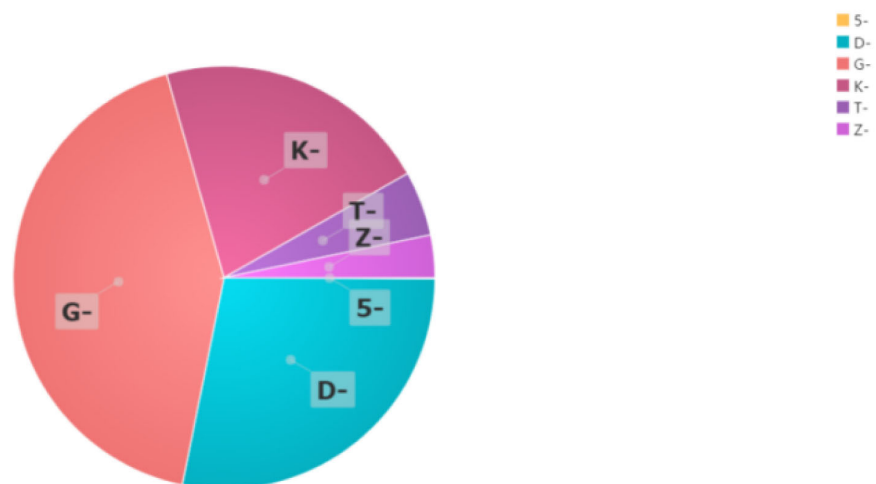
The experiment selects the passenger flow data of several stations in a certain area of China from January 2015 to March 2016. Firstly, the passenger flow and the passenger load rate are analyzed statistically on the train type, train number, time zone and date, and the following conclusions are obtained:

1) The total number of trains at the beginning of G, D, and K accounts for about 90% of the total number of trains. High-speed trains and trains are the main types of trains (see **Figure 3**).

2) Except for T01, the average passenger load rate of trains starting with T is less than 20%. Therefore, it is necessary to consider whether the following vehicles can be used efficiently (see **Figure 4**).

3) The peak period of the flow of people within 24 hours a day is from 1 pm to 5 pm, indicating that the afternoon time is the peak of the flow of people. The relevant departments of the railway can conduct targeted traffic flow during peak hours and increase the number of service personnel at the station (see **Figure 5**).

4) The passenger load factor in summer is higher than that in spring, autumn and winter. The average daily passenger load factor in summer is over 70%. The main reason is that the summer vacation is the peak period for students to return home and travel, and the transfer of migrant workers can also increase the



**Figure 3.** Pie chart of the number of each train model.

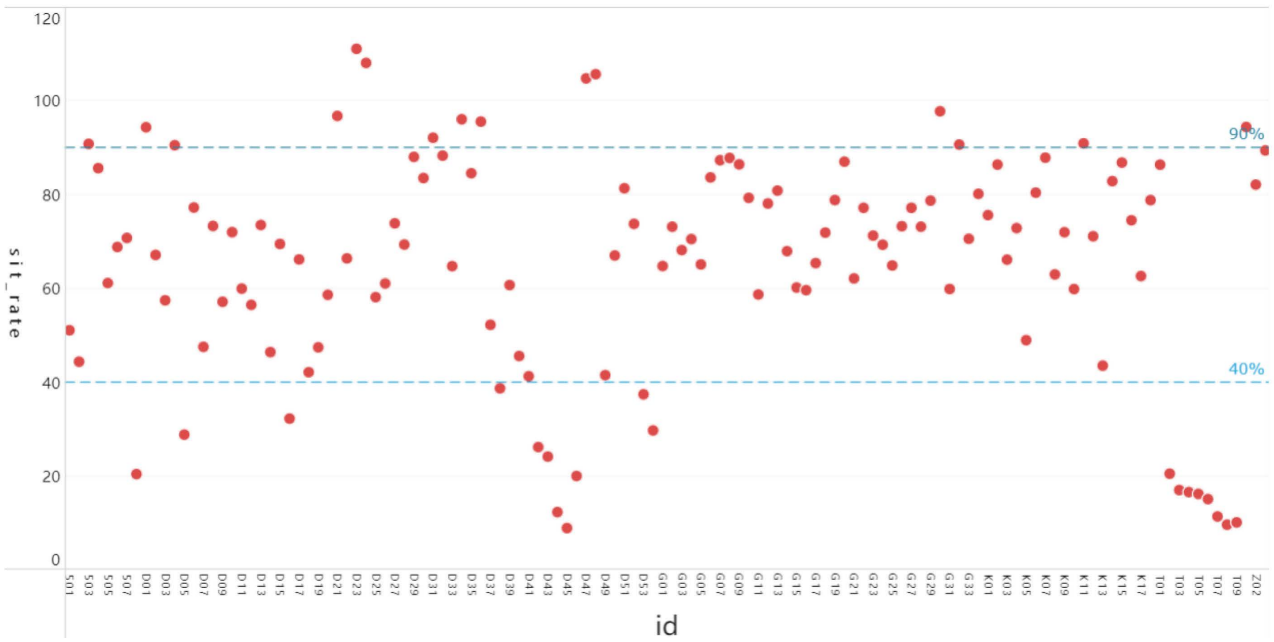


Figure 4. Train number and average passenger load rate scatter plot.

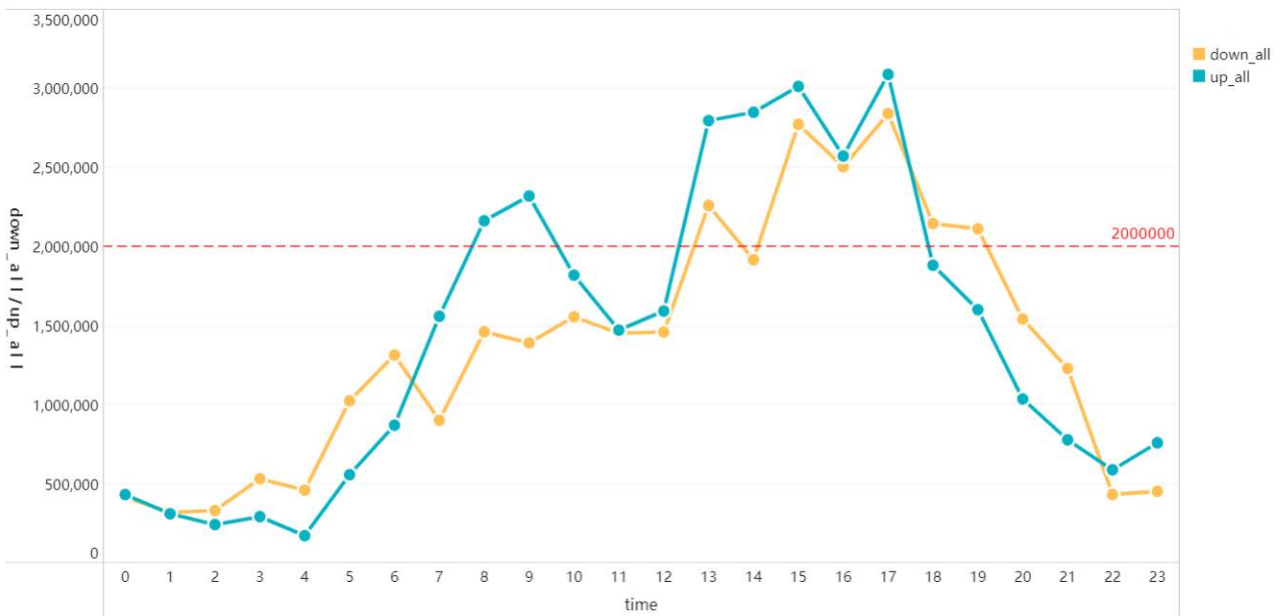


Figure 5. Line chart of the total number of people getting on and off at each time.

passenger load factor to a certain extent. Holidays should also be given as an important factor in the train deployment program (see Figure 6).

### 5.2. GA Improved BP Neural Network to Predict Railway Passenger Flow

In the process of genetic algorithm optimization, the fitness of the best individual in the population changes as shown in Figure 7. It can be seen from Figure 8 that the prediction model of the standard BP neural network has higher error

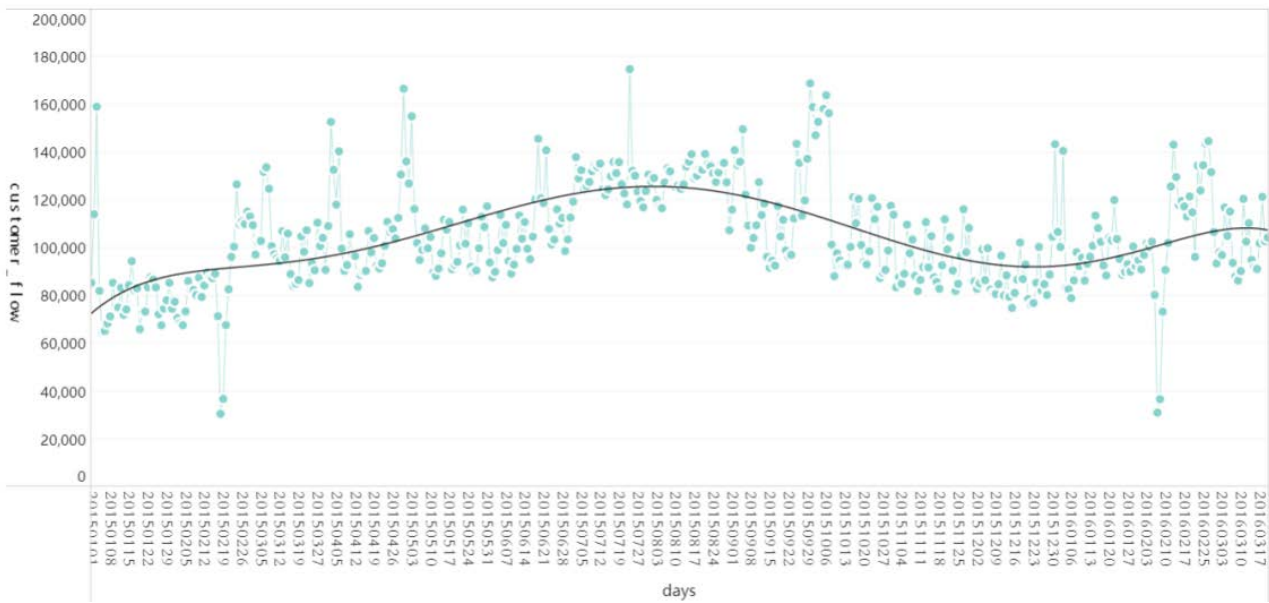


Figure 6. Date and corresponding passenger line chart.

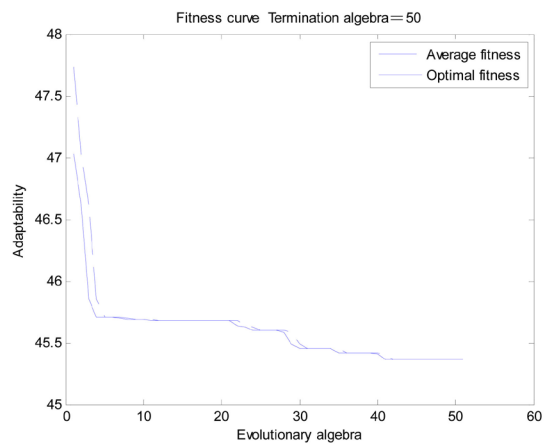


Figure 7. Optimal individual fitness value curve.

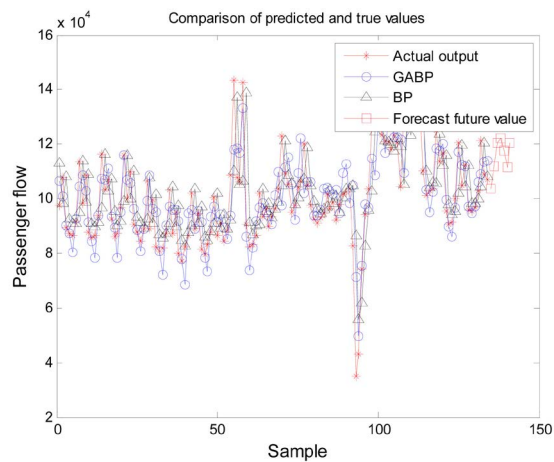
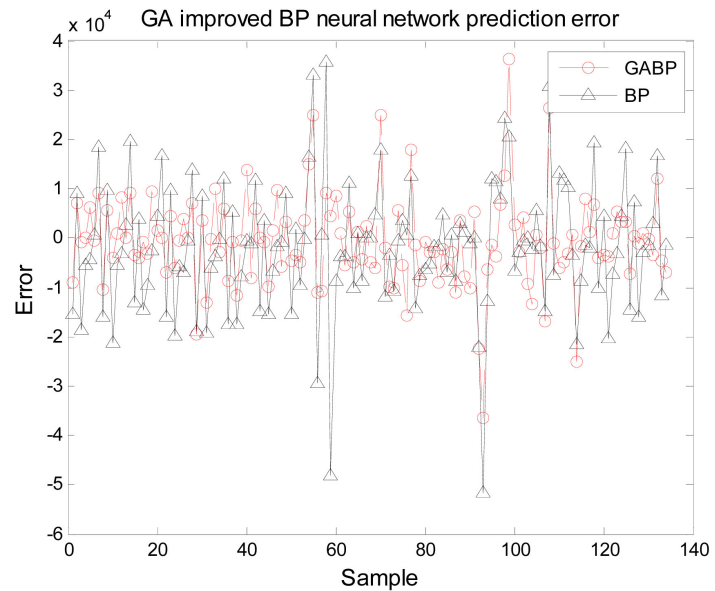


Figure 8. Comparison of two predicted values and real values and predicted values for the next week.

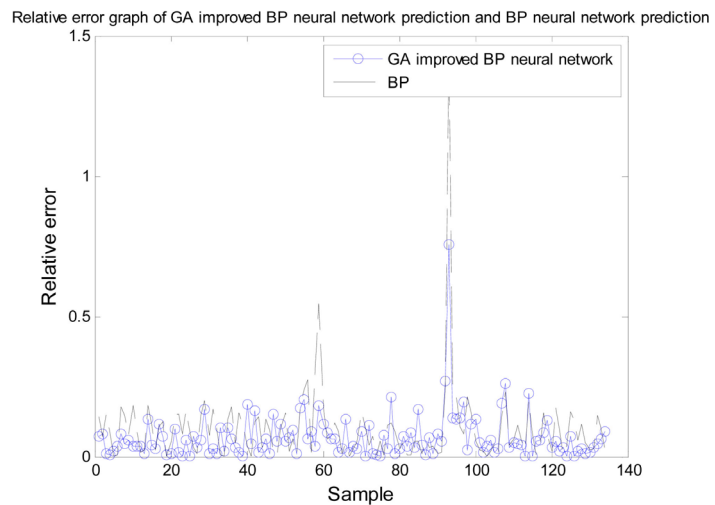


than the actual output compared with the actual output value of the passenger flow, and the prediction result of the BP neural network prediction model improved by the genetic algorithm [12] can Reduce this error and be more stable and stable. The absolute error of the two algorithms is given by **Figure 9**.

It can be seen from **Figure 9** that the absolute error of the BP neural network improved by the genetic algorithm is generally smaller than the absolute error of the standard BP neural network, but the relative error is more sensitive to the test than the absolute error. The relative error refers to a value obtained by multiplying the ratio of the absolute error caused by the measurement to the measured true value by 100%, expressed as a percentage. A comparison of the absolute values of the relative errors of the two models is given below, as shown in **Figure 10**.



**Figure 9.** Comparison of absolute error between two models and true values.



**Figure 10.** Comparison of absolute values of relative errors between two models and real values.



The two peaks in **Figure 10** correspond to the New Year's Day in 2016 and the Spring Festival in 2016. It can be more clearly seen from the figure that the standard BP neural network railway passenger traffic prediction model is not accurate for the prediction results for certain holidays, and has a large deviation from the real value, and the genetic algorithm has been improved. The BP neural network prediction model not only performs better on non-holiday prediction performance than the standard BP neural network, but also has a great precision improvement for the prediction of holidays compared with the standard BP neural network prediction model.

## 6. Conclusion

The simulation results show that the BP neural network prediction model based on the initial threshold and weight of BP neural network optimized by genetic algorithm is better than the standard BP neural network in predicting railway passenger flow, and the prediction result is stable. Especially for the prediction of certain holidays, it can greatly reduce the prediction error, has strong robustness, can better deal with the problem that BP neural network is easy to fall into local optimum, and improve the convergence speed of the model. Compared with the standard BP neural network prediction model, this model has higher prediction accuracy and better nonlinear fitting ability for railway passenger flow time series.

## Acknowledgements

This work was supported by scientific research fund project in Beijing University of Civil Engineering and Architecture (KYJJ2017035).

## Conflicts of Interest

The authors declare no conflicts of interest regarding the publication of this paper.

## References

- [1] Wang, H.Y. (2003) Intelligent Ticket Allocation Method Based on Passenger Flow Prediction. *China Railway Science*.
- [2] Luo, X.Y. (1998) Passenger Flow Prediction and Competition Model of Railway. Southwest Jiaotong University, Chengdu.
- [3] Wu, X.H. (2010) Optimization Prediction of Railway Passenger Traffic Volume Based on Neural Network. *Computer Simulation*, **27**, 168-170.
- [4] Chen, P. and Sun, Q.X. (2005) Research on Railway Passenger Volume Forecast Method Based on Gray Markov Process. *Railway Transportation and Economy*, **27**, 65-67.
- [5] Hou, L.M. and Ma, G.F. (2011) Prediction of Railway Passenger Volume Based on Grey Linear Regression Combination Model. *Computer Simulation*, **28**, 1-3, 30.
- [6] Wang, J.X., Liu C.H., Shan, X.H. and Zhu, J.S. (2010) Railway Passenger Volume Forecast Based on Two-Level Orthogonal Neural Network Model. *China Railway*

*Science*, **32**, 126-132.

- [7] Zhou, H.R. and Zheng, P.Y. (2007) Parameter Optimization of LS-SVM and Forecast of Railway Passenger Transport Market. *Computer Engineering and Application*, **44**, 206-208.
- [8] Gui, W.L. and Han, Z.Z. (2011) Analysis of Fluctuation of Passenger Volume of China's Railway Based on Seasonal Adjustment Model. *Railway Transport and Economy*, **33**, 78-82.
- [9] Liu, Y., Dai, Y. and Cao, J.H. (2008) Prediction of Flow Chaotic Time Series Based on Wavelet Neural Network. *Computer Engineering*, **34**, 105-106.
- [10] Wang, Z., Wang, Y.H. (2005) Application of Improved BP Neural Network in Railway Passenger Volume Time Series Prediction. *Journal of Central South University*, **36**, 158-162.
- [11] Shi, Y.S. and Song, Y.X. (2004) Fault Diagnosis Model Based on Genetic Algorithm and BP Neural Network. *Computer Engineering*, **30**, 125-127.
- [12] Zhou, Z.H. (2011) Machine Learning and Its Application. Tsinghua University Press, Beijing.