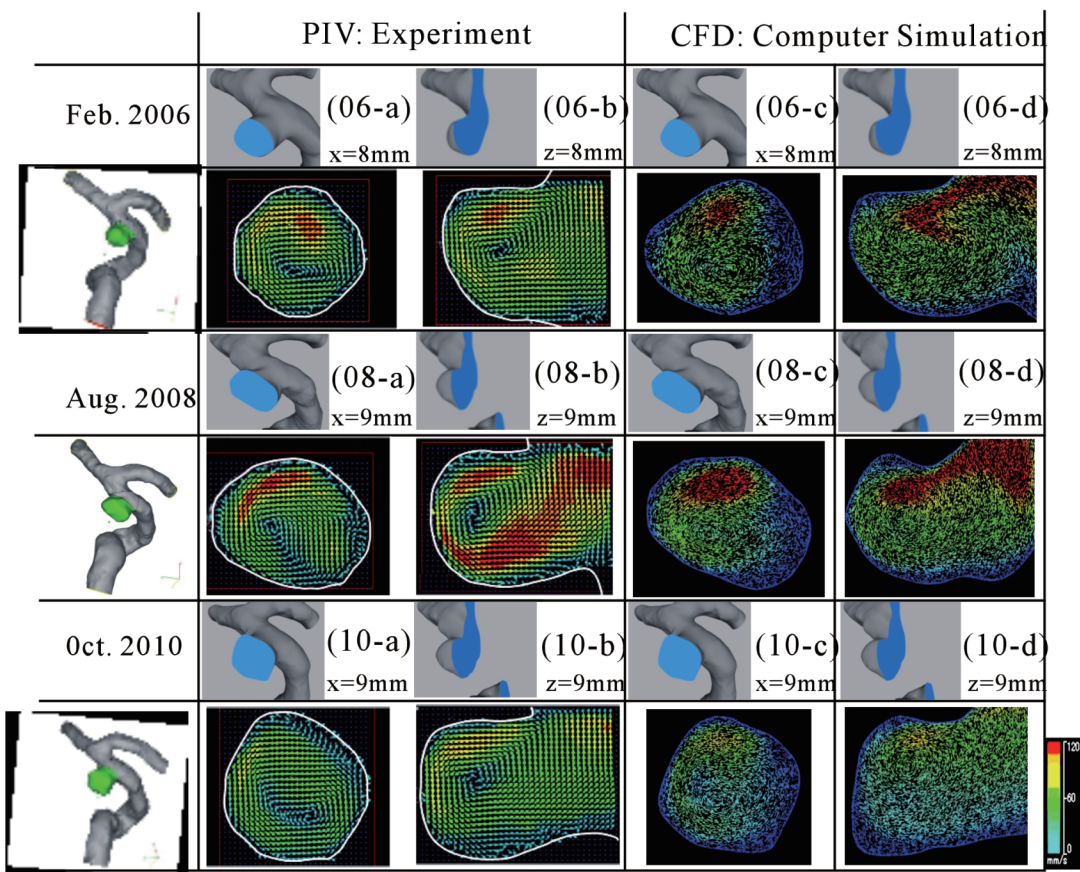


# J B i S E

## Journal of Biomedical Science and Engineering



Editor-in-Chief  
 Kuo-Chen Chou

[www.scirp.org/journal/jbise](http://www.scirp.org/journal/jbise)

## TABLE OF CONTENTS

Volume 5, Number 12A, December 2012

<b>Fatal liver abscess caused by <i>Clostridium perfringens</i> complicated with transarterial chemoembolization</b>	
N. Sakamoto, M.o Yamaguchi, T. Okada, K. Idoguchi, E. Ueshima, A. Muradi, K. Sugimoto.....	763
<b>Visualization of utero-ovarian anastomoses: Comparison between patients with and without uterine fibroid</b>	
Y. Baba, S. Hayashi, S. Ikeda, M. Nakajo, M. Yoshinaga, T. Douchi.....	767
<b>Reaction of water and living systems under the chronic effect of ionized radiation in low doses</b>	
I. B. Ushakov, V. V. Tsetlin, S. S. Moisa.....	771
<b>Measurement of the exercising blood flow during rhythmical muscle contractions assessed by Doppler ultrasound: Methodological considerations</b>	
T. Osada, B. Saltin, S. P. Mortensen, G. Rådegran.....	779
<b>Cardiac imaging of prosthetic valve dysfunction by transesophageal echocardiography</b>	
M. Z. Ulucam.....	789
<b>Phantom study of the impact of adaptive statistical iterative reconstruction (ASiR™) on image quality for paediatric computed tomography</b>	
A. Protik, K. Thomas, P. Babyn, N. L. Ford.....	793
<b>Framework for development of three-dimensional digital atlas of human anatomy</b>	
D. B. D. Z. Dalke, N. A. T. Regattieri, L. E. B. Dorini, L. Ortolan, P. A. Borba, M. A. Amaral.....	807
<b>Spectrum of imaging and characteristics for liver tumors treated with irreversible electroporation</b>	
R. E. Neal II, W. Cheung, H. Kavnoudias, K. R. Thomson.....	813
<b>Functional imaging of skeletal muscle glucose metabolism by <sup>18</sup>F-FDG PET to characterize insulin resistance in patients at high risk for coronary artery disease</b>	
I. Yokoyama, T. Moritan, Y. Inoue.....	819
<b>The lateral neck radiograph for an impacted fish bone in the aero-digestive tract: Going back to basics</b>	
D. Shetty, D. AT Gay.....	826
<b>Skeletal muscle and whole body insulin resistance but not cardiac muscle insulin resistance could be improved by troglitazone therapy within 12 weeks in type-2 diabetes</b>	
I. Yokoyama, T. Moritan, Y. Inou.....	829
<b>Planar scintigraphy in assessment of mandibular asymmetry: Unilateral condylar hyperplasia vs asymmetric mandibular hyperplasia</b>	
L. John, Y. Y. Yin, Y. W. C. David, C. L. Kwong.....	836
<b>Synergy between molecular biology and imaging science toward mechanism-based biomarkers associated with prostate cancer</b>	
B. Seto.....	845
<b>Magnetic resonance spectroscopy in the diagnosis and follow-up of brain tumors</b>	
A. Housni, S. Boujraf.....	853
<b>A wavelet-based super-resolution method for multi-slice MRI</b>	
R. Islam, A. J. Lambert, M. R. Pickering, J. M. Scarvell, P. N. Smith.....	862
<b>Non-rigid registration and KLT filter to improve SNR and CNR in GRE-EPI myocardial perfusion imaging</b>	
G. Mihai, Y. Ding, H. Xue, Y. -C. Chung, S. Rajagopalan, J. Guehring, O. P. Simonetti.....	871

**Medical image fusion based on pulse coupled neural networks and multi-feature fuzzy clustering**  
X. Luo, X. Wu.....878

**The hemodynamic study for growth factor evaluation of rupture cerebral aneurysm followed up for five years**  
M. Kojima, K. Irie, S. Ikeda, T. Fukuda, F. Arai, Y. Hirose, M. Negoro.....884

**Raman spectroscopy for human cancer tissue diagnosis: A pattern recognition approach**  
M. Rizkalla, P. Ghane, M. Agarwal, S. Shrestha, K. Varahramyan.....892

**Magnetic resonance imaging of the ligaments of the craniocervical region at 3Tesla magnetic resonance unit: Quantitative and qualitative assessment**  
K. Vassiou, K. Eftichia, K. Marinos, F. Kotrogianni, M. Fanariotis, I. Fezoulidis, D. Arvanitis.....901

---

The figure on the front cover is from the article published in J. Biomedical Science and Engineering, 2012, Vol. 5, No. 15 A, pp. 763-909 by Masahiro Kojima, *et al.*

# Journal of Biomedical Science and Engineering (JBiSE)

## Journal Information

### SUBSCRIPTIONS

The *Journal of Biomedical Science and Engineering* (Online at Scientific Research Publishing, [www.SciRP.org](http://www.SciRP.org)) is published monthly by Scientific Research Publishing, Inc., USA.

#### Subscription rates:

Print: \$79 per issue.

To subscribe, please contact Journals Subscriptions Department, E-mail: [sub@scirp.org](mailto:sub@scirp.org)

### SERVICES

#### Advertisements

Advertisement Sales Department, E-mail: [service@scirp.org](mailto:service@scirp.org)

#### Reprints (minimum quantity 100 copies)

Reprints Co-ordinator, Scientific Research Publishing, Inc., USA.

E-mail: [sub@scirp.org](mailto:sub@scirp.org)

### COPYRIGHT

Copyright©2012 Scientific Research Publishing, Inc.

All Rights Reserved. No part of this publication may be reproduced, stored in a retrieval system, or transmitted, in any form or by any means, electronic, mechanical, photocopying, recording, scanning or otherwise, except as described below, without the permission in writing of the Publisher.

Copying of articles is not permitted except for personal and internal use, to the extent permitted by national copyright law, or under the terms of a license issued by the national Reproduction Rights Organization.

Requests for permission for other kinds of copying, such as copying for general distribution, for advertising or promotional purposes, for creating new collective works or for resale, and other enquiries should be addressed to the Publisher.

Statements and opinions expressed in the articles and communications are those of the individual contributors and not the statements and opinion of Scientific Research Publishing, Inc. We assume no responsibility or liability for any damage or injury to persons or property arising out of the use of any materials, instructions, methods or ideas contained herein. We expressly disclaim any implied warranties of merchantability or fitness for a particular purpose. If expert assistance is required, the services of a competent professional person should be sought.

### PRODUCTION INFORMATION

For manuscripts that have been accepted for publication, please contact:

E-mail: [jbise@scirp.org](mailto:jbise@scirp.org)