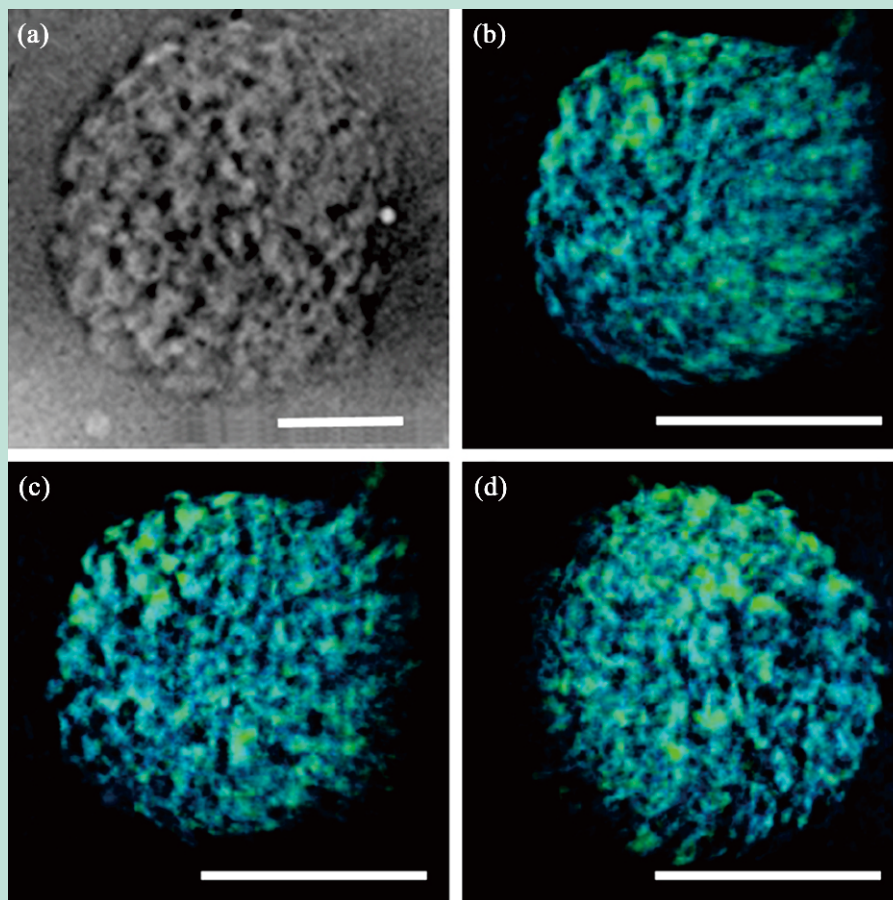


# JBiSE

ISSN: 1937-6871

Volume 5, Number 6, June 2012

Journal of **B**iomedical **S**cience and **E**ngineering



ISSN: 1937-6871



Editor-in-Chief  
Kuo-Chen Chou

# Journal Editorial Board

ISSN 1937-6871 (Print) ISSN 1937-688X (Online)

<http://www.scirp.org/journal/jbise>

---

## Editor-in-Chief

**Prof. Kuo-Chen Chou** Gordon Life Science Institute, San Diego, California, USA

## Editorial Board

**Prof. Suleyman I. Allakhverdiev** Institute of Basic Biological Problems, Russia  
**Prof. Christopher J. Branford-White** London Metropolitan University, UK  
**Prof. Thomas Casavant** University of Iowa, USA  
**Dr. Feng Cheng** Yale University, USA  
**Prof. Reba Goodman** Columbia University, USA  
**Prof. Fu-Chu He** Chinese Academy of Sciences, China  
**Prof. Robert L. Heinrikson** Proteos, Inc., USA  
**Prof. Zeng-Jian Hu** Howard University, USA  
**Prof. Takeshi Kikuchi** Ritsumeikan University, Japan  
**Prof. Rob Krams** Imperial College London, UK  
**Prof. Lukasz Kurgan** University of Alberta, Canada  
**Prof. Juan Liu** Wuhan University, China  
**Dr. Girdhar K. Pandey** University of Delhi South Campus, India  
**Dr. Ganesan Pugalenti** Genome Institute of Singapore, Singapore  
**Prof. Hong-Bin Shen** Shanghai Jiao Tong University, China  
**Dr. Yanmei Tie** Harvard Medical School, USA  
**Dr. Elif Derya Übeyli** TOBB University of Economics and Technology, Turkey  
**Dr. Ching-Sung Wang** Oriental Institute Technology, Chinese Taipei  
**Dr. Murali Mohan Yallapu** Sanford Research, USA  
**Prof. Zhizhou Zhang** Harbin Institute of Technology, China

## Managing Executive Editor

**Dr. Yufei Chen** Scientific Research Publishing, USA Email: [yfchen@scirp.org](mailto:yfchen@scirp.org)

**TABLE OF CONTENTS**  
**Volume 5, Number 6, June 2012**

**Quantum dots induce hot-start effects for taq-based polymerase chain reaction**

F. M. Sang, Y. Yang, H. Y. Wang, X. L. Ju, Z. Z. Zhang.....295

**Dose-dependent effects of pentabrominated diphenyl ethers on sexual hormone and histology of male reproductive system in rats**

L. Y. Yuan, M. Q. Fan, P. Zhan.....302

**The analysis of microscopy imaging on liquid crystalline components of the cell nucleus**

S. Y. Sun, M. X. Liu, Q. W. Dai, F. Q. Dong, L. Z. Liu, T. T. Huo.....307

**Automatic detection of pulse morphology patterns & cardiac risks**

R. R. Joshi, G. B. Nawsupe, S. P. Wangikar.....315

**A computer aided detection framework for mammographic images using fisher linear discriminant and nearest neighbor classifier**

M. Sarfraz, F. Abu-Amara, I. Abdel-Qader.....323

**Sleep Disorder Detection and Identification**

D. E. B. Tan, W. Y. Leong.....330

**Effects of geomagnetic disturbances on humans functional state in space flight**

T. K. Breus, R. M. Baevskii, A. G. Chernikova.....341

---

The figure on the front cover is from the article published in J. Biomedical Science and Engineering, 2012, Vol. 5, No. 6, pp. 307-314 by Shiyong Sun, *et al.*

# Journal of Biomedical Science and Engineering (JBiSE)

## Journal Information

### SUBSCRIPTIONS

The *Journal of Biomedical Science and Engineering* (Online at Scientific Research Publishing, [www.SciRP.org](http://www.SciRP.org)) is published monthly by Scientific Research Publishing, Inc., USA.

#### Subscription rates:

Print: \$79 per issue.

To subscribe, please contact Journals Subscriptions Department, E-mail: [sub@scirp.org](mailto:sub@scirp.org)

### SERVICES

#### Advertisements

Advertisement Sales Department, E-mail: [service@scirp.org](mailto:service@scirp.org)

#### Reprints (minimum quantity 100 copies)

Reprints Co-ordinator, Scientific Research Publishing, Inc., USA.

E-mail: [sub@scirp.org](mailto:sub@scirp.org)

### COPYRIGHT

Copyright©2012 Scientific Research Publishing, Inc.

All Rights Reserved. No part of this publication may be reproduced, stored in a retrieval system, or transmitted, in any form or by any means, electronic, mechanical, photocopying, recording, scanning or otherwise, except as described below, without the permission in writing of the Publisher.

Copying of articles is not permitted except for personal and internal use, to the extent permitted by national copyright law, or under the terms of a license issued by the national Reproduction Rights Organization.

Requests for permission for other kinds of copying, such as copying for general distribution, for advertising or promotional purposes, for creating new collective works or for resale, and other enquiries should be addressed to the Publisher.

Statements and opinions expressed in the articles and communications are those of the individual contributors and not the statements and opinion of Scientific Research Publishing, Inc. We assume no responsibility or liability for any damage or injury to persons or property arising out of the use of any materials, instructions, methods or ideas contained herein. We expressly disclaim any implied warranties of merchantability or fitness for a particular purpose. If expert assistance is required, the services of a competent professional person should be sought.

### PRODUCTION INFORMATION

For manuscripts that have been accepted for publication, please contact:

E-mail: [jbise@scirp.org](mailto:jbise@scirp.org)

## Journal of Biomedical Science and Engineering (JBiSE)

<http://www.scirp.org/journal/jbise>

JBiSE, an international journal, publishes research and review articles in all important aspects of biology, medicine, engineering, and their intersection. Both experimental and theoretical papers are acceptable provided they report important findings, novel insights, or useful techniques in these areas. All manuscripts must be prepared in English, and are subject to a rigorous and fair peer-review process. Accepted papers will immediately appear online followed by printed in hard copy.

### Subject Coverage

- Applied Biomaterials
- Bioelectrical and Neural Engineering
- Bioinformatics and Computational Biology
- Biomechanics and Biotransport
- Biomedical and Environmental Sciences
- Biomedical Chemistry
- Biomedical Chromatography
- Biomedical Devices, Sensors, Artificial Organs and Nano Technologies
- Biomedical Engineering
- Biomedical Imaging, Processing and Visualization
- Biomedical Informatics
- Biomedical Materials
- Biomedical Microdevices
- Biomedical Modeling
- Biomedical Sciences and Applications
- Biomedical Semantics
- Biomedical Signal Processing and Control
- Biomedicine and Biotechnology
- Biomedicine and Pharmacotherapy
- Clinical Engineering, Wearable and Real-Time Health Monitoring Systems
- Computer Methods and Programs in Biomedicine
- Genetic Engineering
- Genomics
- History and Philosophy of Biomedical Sciences
- Mechanical Behavior of Biomedical Materials
- Medical Biochemistry
- Medical Cell Biology
- Molecular and Genetic Medicine
- Nano-Bio-Analysis
- Negative Results in Biomedicine
- NMR/CT/ECG Technologies and Electromagnetic Field Simulation
- NMR in Biomedicine
- Nonlinear Biomedical Physics
- Numerical Methods in Biomedical Engineering
- Pharmaceutical and Biomedical Analysis
- Physiological Signal Processing
- Proteomics
- Software, Tools and Application in Medical Engineering
- Structure-Based Drug Design

### Notes for Intending Authors

Submitted papers should not have been previously published nor be currently under consideration for publication elsewhere. Paper submission will be handled electronically through the website. All papers are refereed through a peer review process. For more details about the submissions, please access the website.

### Website and E-Mail

<http://www.scirp.org/journal/jbise>

Email: [jbise@scirp.org](mailto:jbise@scirp.org)



### Editor-in-Chief

Prof. Kuo-Chen Chou

Gordon Life Science Institute, San Diego, California, USA

### Editorial Board

- |                                     |   |
|-------------------------------------|---|
| Prof. Suleyman I. Allakhverdiev     | Institute of Basic Biological Problems, Russia      |
| Prof. Christopher J. Branford-White | London Metropolitan University, UK                  |
| Prof. Thomas Casavant               | University of Iowa, USA                             |
| Dr. Feng Cheng                      | Yale University, USA                                |
| Prof. Reba Goodman                  | Columbia University, USA                            |
| Prof. Fu-Chu He                     | Chinese Academy of Sciences, China                  |
| Prof. Robert L. Heinrichson         | Proteos, Inc., USA                                  |
| Prof. Zeng-Jian Hu                  | Howard University, USA                              |
| Prof. Takeshi Kikuchi               | Ritsumeikan University, Japan                       |
| Prof. Rob Krams                     | Imperial College London, UK                         |
| Prof. Lukasz Kurgan                 | University of Alberta, Canada                       |
| Prof. Juan Liu                      | Wuhan University, China                             |
| Dr. Girdhar K. Pandey               | University of Delhi South Campus, India             |
| Dr. Ganesan Pugalethi               | Genome Institute of Singapore, Singapore            |
| Prof. Hong-Bin Shen                 | Shanghai Jiao Tong University, China                |
| Dr. Yanmei Tie                      | Harvard Medical School, USA                         |
| Dr. Elif Derya Übeyli               | TOBB University of Economics and Technology, Turkey |
| Dr. Ching-Sung Wang                 | Oriental Institute Technology, Chinese Taipei       |
| Dr. Murali Mohan Yallapu            | Sanford Research, USA                               |
| Prof. Zhizhou Zhang                 | Harbin Institute of Technology, China               |

ISSN 1937-6871 (Print), 1937-688X (Online)