

Exploring the Association between Adult Attachment Styles in Romantic Relationships, Perceptions of Parents from Childhood and Relationship Satisfaction

Gwen Gleeson, Amanda Fitzgerald

School of Psychology, University College Dublin, Dublin, Ireland
Email: gwen.gleeson@ucdconnect.ie

Received 6 May 2014; revised 20 June 2014; accepted 5 July 2014

Copyright © 2014 by authors and Scientific Research Publishing Inc.

This work is licensed under the Creative Commons Attribution International License (CC BY).

<http://creativecommons.org/licenses/by/4.0/>



Open Access

Abstract

Little research has examined how attachment styles in childhood are related to current romantic relationship experiences. The aim of this study was to explore the association between perceptions of childhood experiences with parents, attachment styles in romantic relationships, and relationship satisfaction in a sample of young adults. The sample consisted of 227 participants, 153 of which were university students and the remaining 69 were members of the general population. Of these, 177 (78%) were female and 50 (22%) were male, with an age range of 18 - 39. Participants completed a battery of self-report measures assessing their attachment style in romantic relationships, satisfaction in their current romantic relationship, and an adjective checklist describing their parents and their parent's relationship with each other. The majority of males had an avoidant-fearful style, while females tended to have an avoidant-fearful or secure style. Findings were that participants' descriptions of their mother, father, and parental relationship were associated with their attachment style. In terms of a current romantic relationship, those with a secure attachment style were much more likely to be in a relationship whereas those with an avoidant-fearful style were not. Secure participants were more satisfied in their relationships than the insecure styles of attachment. Finally, chi-square tests revealed that there was no association between gender and attachment style. Results were discussed in terms of methodological limitations such as the use of self-report measures; theoretical weaknesses for example the variability in the approaches used in attachment research; and future research, which included the use of longitudinal studies which may offer insight into how early parenting behaviours act as predictors of later relationship functioning.

How to cite this paper: Gleeson, G. and Fitzgerald, A. (2014) Exploring the Association between Adult Attachment Styles in Romantic Relationships, Perceptions of Parents from Childhood and Relationship Satisfaction. *Health*, 6, 1643-1661.
<http://dx.doi.org/10.4236/health.2014.613196>

Keywords

Adult Attachment, Romantic Relationships, Relationship Satisfaction, Childhood

1. Introduction

The impact which early experience has upon the development and maintenance of adult relationships is an enduring issue in developmental psychology and one which is of theoretical and clinical interest. This study will explore possible connections between perceptions of childhood experiences with parents, attachment styles in romantic relationships, and relationship satisfaction.

According to attachment theory [1], the quality of early interactions between the child and their primary caregiver has a significant impact on the child's subsequent psychological and interpersonal functioning throughout the lifespan. This theory is based on the premise that attachment security develops when the caregiver is perceived as being responsible and caring whereas attachment insecurity results when the caregiver is perceived as inconsistent in their responses and availability [2]. Importantly, it is believed that as a result of these early interactions, the child develops mental representations or internal working models of attachment which act as a guide for perceptions and behaviours in subsequent relationships. Ainsworth, Blehar, Waters and Wall [3] initially distinguished between three styles of attachment in infancy: secure, anxious/ambivalent, and avoidant. The anxious/ambivalent child is characterised by uncertainty regarding the love of their attachment figure while the avoidant child tends not to seek contact with the caregiver, appearing self-reliant. Main and Solomon [4] incorporated a fourth category, disorganised attachment, to account for children who displayed contradictory behaviours towards their caregiver. While the focus of this early research was on the mother-child interaction, subsequent research has examined the link between the quality of infant and adult attachment relationships [2].

1.1. Methodological Approaches

Longitudinal studies have provided the strongest evidence for the continuity of attachment styles from childhood to adulthood [5]. Importantly, research has shown that working models of attachment while resistant to change, are subject to revision over time as a result of new experiences or an unstable relationship environment [6] [7].

Two main approaches to assessing attachment-related cognitions in adulthood have emerged. The first approach centres on the use of attachment interviews to measure internal representations of attachment experiences [8]. The use of the Adult Attachment Interview [AAI; 9] is considered the gold standard when assessing such representations [10]. One disadvantage of the AAI, however, is that it requires extensive professional training before it can be administered and scored [11]. The second approach taken in a number of studies is the use of retrospective self-report questionnaires [12]. These measures rely on participants' memories of parents during childhood and these accounts most likely reflect constructions or projections rather than accurate reports of early parental behaviour [13]. However, as Miga *et al.* [8] highlights, while interview techniques have proven to be very valuable, individuals' explicit and consciously-reportable expectations about close relationships are also likely to have vital meaning in understanding social behaviour.

1.2. Attachment Styles in Romantic Relationships

It has been suggested that adult attachment in the context of romantic relationships serves an evolutionary, adaptive objective that is comparable to the parent-infant relationship (Feeney, 2008). Hazan and Shaver's [12] preminent work explored romantic love as an attachment process. Through the construction of self-report questionnaires, they found that the three different styles of attachment, as proposed by Ainsworth *et al.* [3], help explain personality differences in experiences of romantic relationships. In essence, participant's perceptions of the quality of their relationship with both parents during childhood were significantly associated with their attachment style to others in adulthood [12].

In one aspect of their study, Hazan and Shaver [12] used an adjective checklist in which participants had to choose adjectives to describe their parents as they remembered them from childhood. Findings revealed that participants who were securely attached in their romantic relationships tended to describe their parents more posi-

tively, as well as the parents' relationship as warmer, than did insecurely attached participants. In particular, secure participants were much more likely to describe their childhood relationships with parents as responsive, affectionate, caring and accepting than insecurely attached participants, who tended to describe this early relationship as cold and rejecting [12] [14]. Those with an anxious/ambivalent attachment style were also found to be more likely to describe their parents as inconsistent or unfair [12]. Similar findings were also replicated in other earlier studies using self-report questionnaires [15] [16]. Such research shows that securely attached individuals have a tendency to report positive perceptions of early family relationships [16]-[18]. On the other hand, anxious-ambivalent participants were found to be more likely to perceive early parental support as inconsistent, while avoidant participants were more likely to report being separated from their mother during childhood and to be distrustful of others [15] [16].

1.3. Theoretical Issues in Attachment Research

Despite the importance of Hazan and Shaver's [12] theory, numerous criticisms have emerged, particularly for their use of a three-category model of attachment. Subsequent research has stressed how avoidant individuals differ to the extent to which they displayed anxious and avoidant qualities [19]. Importantly, Bartholomew and Horowitz [20] later developed a two dimensional model of attachment in which four styles are defined. Most notably, they distinguished between two forms of avoidant attachment: avoidant-fearful and avoidant-dismissive. An avoidant-fearful style is characterised by both high avoidance and anxiety and by negative models of the self and others. Avoidant-dismissing individuals are characterised by high avoidance and low anxiety. While they have a positive model of the self, they have a negative evaluation of others as depending and needy, perhaps reflecting their discomfort with intimacy [21]. Anxious-preoccupied individuals are characterised by high anxiety and low avoidance, view themselves as unworthy and are preoccupied with the need to be accepted by others [20] [21]. These four relational styles have been found to show continuity over the lifespan [11]. More advanced measures of adult attachment are being used in current research, such as The Experiences in Close Relationships Scale (ECR) designed by Brennan *et al.* [19], which was developed following a large-sample factor-analytic study that incorporated all known self-report measures in a single analysis. It works by assessing two underlying dimensions: attachment related anxiety and avoidance.

To date, there has been limited attachment research examining how the differential roles played by the mother and father may impact on individual differences in attachment mental representations [22]. Over the past few years, studies have incorporated this aspect into research on adult attachment styles [14] [23]. Roisman, Collins, Sroufe and Egeland [24] also demonstrated that young adults' states of mind regarding their current romantic relationship are both associated with the quality of their romantic relationships and were rooted in attachment experiences with primary caregivers in childhood. Together, the results of earlier and more recent research provides strong evidence for the association between childhood relationships with parents, at least how they are constructed in memory, and the quality of later adult relationships [13].

1.4. Attachment Style and Relationship Satisfaction

Since the preeminent work of Hazan and Shaver [12], research concerning the influence of adult attachment on relationship satisfaction has demonstrated how secure attachment is positively associated with the quality of romantic relationships while insecure attachment is negatively associated with relationship satisfaction [25]-[27]. Earlier studies have demonstrated that secure relationships are characterised by commitment, high levels of trust, interdependence and satisfaction [15] [16] [28]. In particular, Feeney and Noller [16] found that avoidant participants were more likely to report never to have been in love than secure participants. Secure participants also tended to have longer relationships than anxious-preoccupied participants and were less likely to experience divorce [16]. More recent research using different measures also provide empirical support for the link between secure working models of attachment and the likelihood of experiencing more positive relationships [29] [30].

1.5. The Present Study

The aim of this study is to investigate the possible connection between adult attachment styles in the context of romantic relationships, perceptions of parents from childhood and relationship satisfaction in a sample of young adults (18 - 39 years). Importantly, a key developmental task during this phase of life centers on establishing

long-term, intimate relationships. In light of this, such research is important considering, as Florsheim [31] notes, romantic relationships are failing at an alarming rate as evident with the dramatic increases in the rates of single-parent families, separation, divorce, as well as relationship violence. Furthermore, dissatisfaction within relationships can lead to stress and to the development of clinical problems [32]. Therefore, such research has important practical applications for family therapy and clinical psychology [25]. Attachment research is heavily rooted in scientific theory and the combined use of old and new attachment measures in this study is unique. Furthermore, this research adds to existing literature by assessing perceptions of both parents and incorporating a measure of relationship satisfaction thereby addressing an aspect of attachment research which previous studies have neglected to explore in detail. The current study hypotheses are as follows:

Hypothesis 1: Males and females will differ in terms of their attachment style.

Hypothesis 2: Types of attachment in adulthood will be closely related to perceived early attachment experiences with parents.

Hypothesis 3: Adults involved in a current romantic relationship, compared to adults without a current relationship, will be differentiated as far as their attachment styles are concerned.

Hypothesis 4: In terms of current romantic relationships, secure adult attachment styles will be positively associated with relationship satisfaction, while insecure adult attachment styles will be negatively associated with relationship satisfaction.

2. Method

2.1. Participants

Participants consisted of 153 university students and 69 members of the general population, 177 (78%) of which were female and 50 (22%) were male, with an age range of 18 - 39. Of these participants, 207 (91.2 %) classified themselves as heterosexual, 8 (3.5%) as gay or lesbian, 9 (4%) as bisexual and 3 (1.3%) participants did not report a sexual preference. Of the 227 participants, 152 (67%) were currently involved in a romantic relationship at the time of the study, whereas 75 (33%) were not. Of these, 46 (30.3%) had a relationship for less than a year, 68 (44.7%) from 1 to 4 years, and 38 (25%) for 5 years and above.

2.2. Materials and Methods

Participants completed an online questionnaire which consisted of four sections. The first section contained questions pertaining to demographic information, such as age, gender, occupational status, relationship status, duration of relationship, and sexual orientation.

2.2.1. The Experiences in Close Relationships Scale-Revised (ECR-R)

The ECR-R [33] assessed participants' attachment style in romantic relationships. This is a widely used self-report measure of romantic attachment. It is comprised of 36 questions related to feelings of emotional security and intimacy in relationships. The scale measures two major dimensions of attachment in the context of close romantic relationships: anxiety (18 items) and avoidance (18 items). Participants indicated their agreement to the statements on a 5-point Likert scale ranging from "Strongly Disagree" to "Strongly Agree", with a neutral response option in the middle. Statements which assess attachment anxiety include "I often worry that my partner doesn't really love me" and "my romantic partner makes me doubt myself". Statements which measure attachment avoidance include "I prefer not to show a partner how I feel deep down" and "I prefer not to be close to romantic partners." Low scores indicate secure attachment while high scores indicate emotional insecurity and difficulties with intimacy. The ECR-R has excellent reliability: in a meta-analysis, α coefficients were reported to be near or above 0.90, and test-retest coefficients were reported to be between 0.50 and 0.75 [34].

2.2.2. Adjective Checklist

The adjective checklist devised by Hazan and Shaver [12] was used to ask participants to describe their parents and their parent's relationship as they remembered them from childhood. Participants were first asked to choose adjectives that best described how their mother behaved towards them during childhood. Participants were then asked to choose adjectives to describe their father as they remembered him from childhood. Participants were then asked to choose adjectives that best described their parent's relationship with each other, as they remembered it from childhood. The adjective checklist used for the description of the mother and father included 38

adjectives such as loving and unresponsive. Participants were also asked to describe their parent's relationship using 12 adjectives such as affectionate and distant. While this is not a standardised measure, the results produced in Hazan and Shaver's study have been conceptually replicated by other researchers using this instrument [14] [16].

2.2.3. Couples Satisfaction Index (CSI)

The four-item format version of the CSI [35] measured participants' satisfaction in their current romantic relationship. Participants were asked to rate their agreement with four statements using a 6-point Likert scale for one question and a five-point likert scale for three questions. The CSI was developed using item response theory and meta-analyses found the average reliability of the measure to be moderately high, with a Cronbach's alpha of 0.940 [36].

2.3 Procedure

The survey was developed using the computer software programme, Qualtrics [37]. Participants were primarily recruited through snowball sampling via the social media site, Facebook, where they were provided with brief information about the study and a link which directed them to the detailed information sheet, consent form, and the Qualtrics questionnaire. The study was advertised on Facebook pages which were dedicated to the target population. Facebook was a beneficial means of collecting data as it is hugely popular among young adults and it is the most frequently used online social networking website with 52% of its users accessing the website daily [38]. The heads of some schools in University College Dublin were also contacted via email to recruit more participants. Individuals were informed that participation was voluntary and that they had the right to withdraw at any time up until the data were collected, as data were completely anonymous and unidentifiable. Each participant needed approximately 15 minutes to complete the questionnaire. Participants were provided with details of the proposed aims of the study, possible risks regarding their involvement and contact details of helplines in case they were affected by the study.

3. Results

3.1. Data Screening and Cleaning

A total of 280 responses were recorded on Qualtrics but only 227 participants were utilised for the purpose of this study (see [Figure 1](#)).

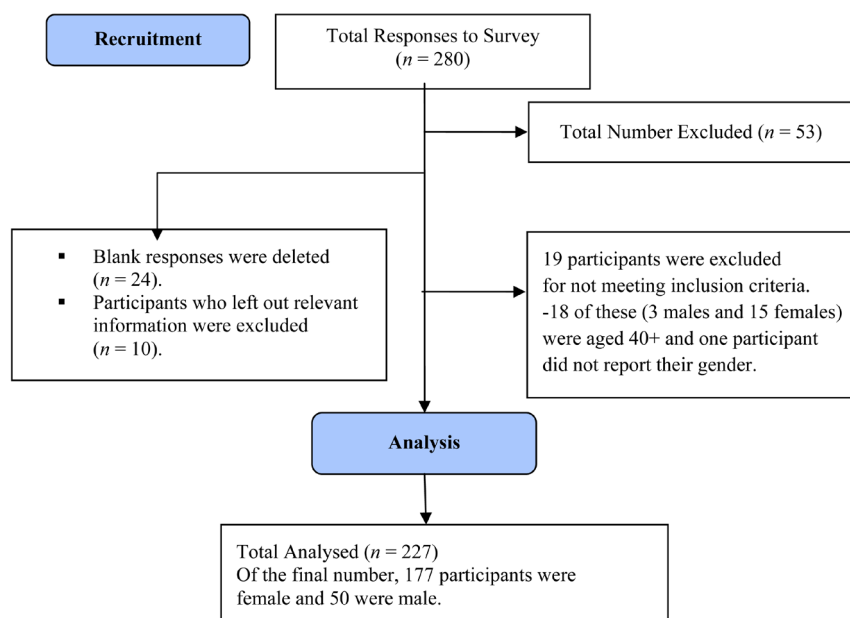


Figure 1. Participants flowchart.

Due to the disproportionate number of females compared to males, a random sample of females ($N = 50$) was compared to full sample of females ($N = 177$) and as there were no differences with respect to mean scores among key variables in this study, the full sample of females was used in the analysis for greater statistical power [39].

3.2. Reliability Analyses

The two subscales of the ECR-R and the CSI demonstrated high reliability as they had a Cronbach's alpha greater than 0.75 (see **Table 1**) [40].

3.3. Preliminary Analyses

Table 2 provides a summary of the range as well as mean scores, standard deviation, skewness and kurtosis of the scales used in this study. As the scores for skewness and kurtosis are between +1 and -1 for each scale, the distribution can be treated as normal [41].

3.4. Attachment Style

Participants were categorised into one of four attachment styles (secure, dismissing, fearful or preoccupied) according to the scores they obtained on the two ECR-R subscales, anxiety and avoidance. This was achieved by assigning participants to groups on the basis of the median of each dimension [51]. If participants' anxiety score was less than 44 and their avoidance score less than 43, they were assigned to the secure group. If participants' anxiety score was less than 44 and their avoidance score was greater or equal to 43, they were assigned to the dismissing group. If participants' anxiety score was greater or equal to 44 and their avoidance score was greater or equal to 43, they were assigned to the fearful group. If participants' anxiety score was greater or equal to 44 and their avoidance score was less than 43, then they were assigned to the preoccupied group. Analysing the responses to the ECR-R scale revealed that 30.4 percent of participants had a secure attachment style, 16.3 percent of participants had an avoidant-dismissing attachment style, 35.2 percent had an avoidant-fearful attachment style, and 18.1 percent had an anxious-preoccupied attachment style (see **Figure 2**).

3.4.1. Hypothesis One

Hypothesis one stated that males and females would differ in terms of their attachment style. The majority of males (40%) were found to have an avoidant-fearful attachment style whereas equal numbers of females were classified as secure (32.8%) and avoidant-fearful (33.9%) (see **Table 3**). Chi-square tests and the method of standardised residuals were carried out to examine the association between gender and attachment style and a significant association was not found, $X^2(3, N = 227) = 2.45, p > 0.05$.

3.4.2. Hypothesis Two

Hypothesis two stated that adult attachment styles would be closely related to perceptions of parents from childhood. In order to examine this association, Chi-square tests were carried out across the 38 adjectives used

Table 1. Cronbach's Alpha analyses for each of the variables under investigation.

Scales	Number of Items	Cronbach's Alpha
Experiences in Close Relationships Scale-Revised (ECR-R)-Anxiety	18	0.932
ECR-R-Avoidance	18	0.870
Couples Satisfaction Index (CSI)	4	0.884

Table 2. Summary of Descriptive Analyses for the ECR-R and the CSI.

Scales	<i>M</i>	<i>SD</i>	Minimum	Maximum	Skewness	Kurtosis
ECR-R Anxiety	44	14.53	18	90	0.143	-0.492
ECR-R Avoidance	42.793	10.564	18	90	0.270	-0.544
CSI	20	3.94	0	25	-0.939	0.975

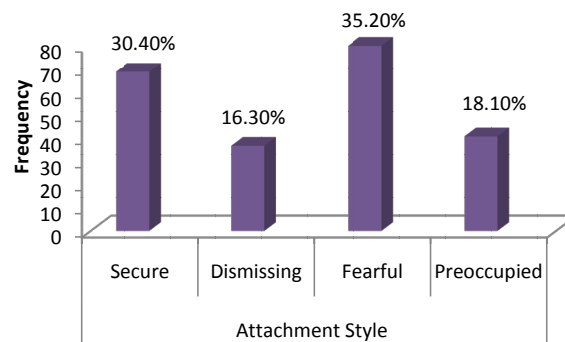


Figure 2. Frequencies and percentages of the four attachment styles.

Table 3. Frequencies and percentages of attachment style as a function of gender.

Attachment Style	Males <i>N</i> (%)	Females <i>N</i> (%)	Total <i>N</i> (%)
Secure	11 (22)	58 (32.8)	69 (30.4)
Avoidant-Dismissing	8 (16)	29 (16.4)	37 (16.3)
Avoidant-Fearful	20 (40)	60 (33.9)	80 (35.3)
Anxious-Preoccupied	11 (22)	30 (16.9)	41 (18)
Total	50	177	227

Note: $\chi^2(3, N = 227) = 2.453, p > 0.05$.

to describe the mother and father. Standardised residuals (SR) greater than ± 2.00 indicate a significant departure from the expected outcome. In order to control for type 1 error when conducting multiple comparisons, Benjamini and Hochberg's (1995) rough false discovery rate was used and the level of significance was measured at below 0.025. This is a less conservative procedure with greater statistical power than the Bonferroni correction [42].

Adjectives for the Mother

Securely attached participants were more likely to perceive their mother as respectful ($SR = 3.2$), confident ($SR = 2.3$), sympathetic ($SR = 2.4$), responsible ($SR = 1.9$) and flexible ($SR = 2.2$) but less likely to describe her as unpredictable ($SR = -2.1$), troubled ($SR = -2.2$), sad/depressed ($SR = -2$) or inconsistent ($SR = -2.5$). Avoidant-fearful participants were less likely to describe their mother as happy ($SR = -2.9$) and more likely to describe her as unpredictable ($SR = 2.7$), sad/depressed ($SR = 2.2$) and inconsistent ($SR = 2.8$). However, a number of these chi-square analyses (rejecting, weak, responsive, abusive, selfish, unfair, cold, hostile and immature) had expected counts less than five and therefore these results must be treated with caution (see **Table 4**).

Adjectives for the Father

Participants with a secure attachment style tended to describe their father as happy ($SR = 3.00$), respectful ($SR = 2.6$), fair ($SR = 2$), sympathetic ($SR = 2.5$), understanding ($SR = 2.2$) and attentive ($SR = 2.1$). Those with an avoidant-fearful style were more likely to describe their father as cold ($SR = 2.5$), troubled ($SR = 2.3$), abusive ($SR = 2.4$), unfair ($SR = 2.2$), disinterested ($SR = 2.5$) and inconsistent ($SR = 2.4$), and less likely to perceive him as being respectful ($SR = -2.6$), happy ($SR = -3.00$), confident ($SR = -2.1$) caring ($SR = -1.9$), and affectionate ($SR = -2.1$). However as the chi-square test for attachment style and the adjectives abusive, rejecting, intrusive, weak, and nervous had counts less than 5 in 50% of cells, these findings must be interpreted with caution (see **Table 5**).

The Parental Relationship

Chi-square analyses also revealed that secure participants were less likely to describe their parents' relationship during childhood as troubled ($SR = -2.00$) or strained ($SR = -2.4$). Participants with an avoidant-fearful style tended not to describe the relationship as affectionate ($SR = -2.1$), supportive ($SR = -2.4$), caring ($SR = -2.2$) or good-humoured ($SR = -2.1$) but were more likely to describe it as unhappy ($SR = 2.6$), distant ($SR =$

Table 4. Summary of chi-square tests on adjectives used to describe the mother ($N = 227$).

Adjectives	Secure % <i>SR</i>	Avoidant-Dismissing % <i>SR</i>	Avoidant-Fearful % <i>SR</i>	Anxious-Preoccupied % <i>SR</i>	X^2 (3, $N = 227$) <i>p</i>
Loving	95.7 (1.1)	78.4 (-0.3)	75 (-0.8)	82.9 (0.0)	0.007
Caring	92.8 (0.7)	78.4 (-0.5)	81.2 (-0.4)	87.8 (0.2)	0.123
Strict	47.8 (-0.2)	56.8 (0.6)	40 (-1.2)	63.4 (1.3)	0.75
Critical	17.4 (-1.6)	27 (-0.1)	32.5 (0.8)	36.6 (1.1)	0.102
Rejecting	1.4 (-1.5)	2.7 (-0.8)	8.8 (1.1)	9.8 (1.1)	0.136
Intrusive	8.7 (-1)	13.5 (0.0)	16.2 (0.7)	14.6 (0.2)	0.584
Weak	2.9 (-1.3)	8.1 (0.2)	12.5 (1.8)	2.4 (-1.1)	0.077
Insecure	11.6 (-1.1)	16.2 (-0.1)	25 (1.7)	12.2 (-0.8)	0.128
Respectful	58 (3.2)	21.6 (-1.4)	25 (-1.5)	29.3 (-0.6)	0.001
Strong	63.8 (1)	54.1 (0.0)	47.5 (-0.9)	53.7 (-0.1)	0.263
Demanding	17.4 (-0.5)	27 (1)	17.5 (-0.5)	22 (0.3)	0.603
Overprotective	27.5 (0.0)	16.2 (-1.3)	30 (0.4)	34.1 (0.8)	0.321
Unresponsive	1.4 (-1.6)	2.7 (-0.8)	11.2 (1.8)	7.3 (.3)	0.069
Abusive	1.4 (-0.4)	2.7 (0.2)	2.5 (0.2)	2.4 (0.1)	0.966
Accepting	60.9 (1.5)	48.6 (0.1)	38.8 (-1.2)	43.9 (-0.4)	0.055
Confident	52.2 (2.3)	35.1 (-0.1)	30 (-0.9)	19.5 (-1.7)	0.003
Selfish	1.4 (-1.5)	2.7 (-0.8)	11.2 (2.1)	4.9 (0-.2)	0.057
Troubled	4.3 (- 2.2)	16.2 (0.3)	25 (2.6)	7.3 (-1.2)	0.002
Nervous	5.8 (-1.7)	13.5 (0.0)	18.8 (1.4)	14.6 (0.2)	0.137
Sympathetic	62.3 (2.4)	40.5 (-0.3)	32.5 (-1.5)	36.6 (-0.7)	0.002
Affectionate	73.9 (1.1)	62.2 (-0.1)	55 (-0.9)	61 (-0.2)	0.122
Disinterested	1.4 (-1.8)	5.4 (-0.5)	12.5 (1.6)	9.8 (0.5)	0.070
Understanding	65.2 (1.7)	51.4 (0.1)	38.8 (-1.5)	48.8 (-0.2)	0.015
Attentive	65.2 (1.5)	51.4 (-0.1)	40 (-1.5)	56.1 (0.3)	0.021
Happy	72.5 (3.3)	35.1 (-1.0)	23.8 (- 2.9)	53.7 (0.7)	0.000
Unpredictable	4.3 (- 2.1)	10.8 (-0.5)	25 (2.7)	9.8 (-0.7)	0.002
Responsible	75.4 (1.9)	43.2 (-1.2)	57.5 (-0.1)	43.9 (-1.2)	0.002
Sad/depressed	5.8 (- 2.00)	16.2 (0.1)	25 (2.2)	12.2 (-0.5)	0.012
Fair	49.3 (1.5)	35.1 (-0.3)	30 (-1.1)	36.6 (-0.1)	0.108
Warm	71 (1.3)	45.9 (-1.0)	58.8 (0.0)	51.2 (-0.7)	0.051
Flexible	39.1 (2.2)	21.6 (-0.5)	17.5 (-1.4)	22 (-0.5)	0.019
Fair	1.4 (-1.2)	5.4 (.3)	6.2 (0.8)	4.9 (0.1)	0.534
Likeable	66.7 (1.2)	48.6 (-0.6)	52.5 (-0.4)	48.4 (-0.6)	0.156
Cold	0 (-1.9)	5.4 (0.0)	7.5 (0.9)	9.8 (1.2)	0.099
Hostile	0 (-1.4)	2.7 (0.0)	3.8 (0.6)	4.9 (0.9)	0.384
Immature	2.9 (-0.9)	10.8 (1.5)	7.5 (0.9)	0 (-1.5)	0.106
Funny	23.4 (0.7)	37.8 (0.4)	25 (-1.4)	39 (0.6)	0.221
Inconsistent	1.4 (- 2.5)	10.8 (-0.2)	22.5 (2.8)	9.8 (-0.4)	0.001

Table 5. Summary of chi-square tests on adjectives used to describe the father ($N = 227$).

Adjectives	Secure % <i>SR</i>	Avoidant-Dismissing % <i>SR</i>	Avoidant-Fearful % <i>SR</i>	Anxious-Preoccupied % <i>SR</i>	X^2 (3, $N = 227$) <i>p</i>
Loving	85.5 (1.3)	70.3 (-0.1)	55 (-1.8)	83.9 (.8)	0.001
Respectful	59.4 (2.6)	35.1 (-0.4)	21.2 (-2.6)	46.3 (0.7)	0.001
Unpredictable	14.5 (-1.1)	21.6 (0.1)	27.5 (1.3)	17.1 (-0.5)	0.239
Rejecting	2.9 (-0.9)	0 (-1.4)	11.2 (2.3)	2.4 (-0.8)	0.027
Intrusive	1.4 (-0.9)	2.7 (-0.3)	7.5 (1.9)	1.4 (-1.2)	0.104
Caring	75.4 (1.3)	59.5 (-0.3)	46.2 (-1.9)	78 (1.2)	0.001
Responsible	71 (1.3)	56.8 (-0.2)	42.5 (-1.9)	73.2 (1.2)	0.001
Accepting	58 (1.8)	40.5 (-0.3)	33.8 (-1.3)	41.5 (-0.2)	0.027
Selfish	7.2 (-1.1)	10.8 (-0.2)	20 (2.1)	4.9 (-1.3)	0.038
Troubled	5.8 (-1.5)	5.4 (-1.2)	21.2 (2.3)	12.2 (0.0)	0.017
Abusive	0 (-1.7)	0 (-1.3)	10 (2.4)	4.9 (0.1)	0.013
Strict	39.1 (-0.6)	35.1 (-0.8)	48.8 (0.7)	48.8 (0.5)	0.400
Fair	68.1 (2.00)	51.4 (0.1)	36.2 (-1.8)	48.8 (-0.2)	0.002
Warm	68.1(1.5)	54.1 (0.0)	42.5 (-1.5)	56.1 (0.1)	0.020
Flexible	29 (1.5)	21.6 (0.1)	16.2 (-0.9)	14.6 (-0.9)	0.188
Weak	1.4 (-0.9)	2.7 (-0.3)	3.8 (0.1)	7.3 (1.3)	0.441
Nervous	4.3 (0.0)	0 (-1.3)	5 (0.3)	7.3 (0.9)	0.458
Unfair	4.3 (-1.4)	2.7 (-1.4)	17.5 (2.2)	9.8 (0.0)	0.020
Insecure	1.4 (-1.7)	2.7 (-0.9)	8.8 (0.7)	14.6 (2)	0.033
Sympathetic	39.1 (2.5)	13.5 (-1.3)	16.2 (-1.4)	24.4 (0.0)	0.004
Likeable	68.1 (1.2)	54.1 (-0.3)	46.2 (-1.3)	63.4 (0.5)	0.044
Affectionate	53.6 (1.6)	37.8 (-0.3)	26.2 (-2.1)	51.2 (1)	0.003
Cold	2.9 (-1.4)	2.7 (-1.1)	15 (2.5)	4.9 (-0.6)	0.017
Strong	59.4 (0.5)	51.4 (-0.3)	45 (-1.2)	70.7 (1.4)	0.044
Disinterested	10.1 (-1.3)	10.8 (-0.8)	27.5 (2.5)	9.8 (-1.0)	0.010
Hostile	4.3 (-1.1)	5.4 (-0.5)	15 (2.2)	2.4 (-1.2)	0.033
Demanding	15.9 (-0.8)	16.2 (-0.5)	23.8 (0.7)	24.4 (0.6)	0.531
Understanding	55.1 (2.2)	35.1 (-0.3)	26.2 (-1.7)	36.6 (-0.2)	0.004
Immature	1.4 (-1.8)	8.1 (0.1)	11.2 (1.2)	9.8 (0.5)	0.133
Overprotective	20.3 (0.0)	16.2 (-0.5)	18.8 (-0.3)	26.8 (0.9)	0.663
Attentive	43.5 (2.1)	24.3 (-0.6)	18.8 (-1.8)	31.7 (0.3)	0.009
Funny	66.7 (1.5)	48.6 (-0.4)	41.2 (-1.5)	61 (0.6)	0.012
Responsive	4.3 (-1.2)	5.4 (-0.6)	15 (2)	4.9 (-0.8)	0.068
Happy	69.6 (3.00)	40.5 (-0.4)	22.5 (-3.00)	53.7 (0.8)	0.001
Inconsistent	7.2 (-0.8)	2.7 (-1.4)	18.8 (2.4)	4.9 (-1.1)	0.014
Sad/depressed	5.8 (-0.5)	2.7 (-1.1)	11.2 (1.2)	7.3 (0.0)	0.370
Critical	11.6 (-1.6)	21.6 (0.2)	28.7 (1.7)	17.1 (-0.5)	0.070
Confident	55.1 (1.8)	43.2 (0.2)	26.2 (-2.1)	43.9 (0.3)	0.004

3.9), troubled ($SR = 3.00$) and strained ($SR = 3.2$). Those with an anxious-preoccupied attachment style were less likely to describe their parents' relationship as distant ($SR = -2.2$). The chi-square test for attachment style and the adjective violent had counts less than 5 in 50% of cells; therefore this result must be treated with caution (see **Table 6**).

Positive and Negative Indexes

To investigate whether the adjectives participants used to describe their parents had a positive or negative trend, two separate indexes were created, one for the positive and one for the negative adjectives. For the analysis, 2×4 non-repeated measures ANOVAs were conducted to investigate the effect of gender and attachment style on the two adjective indexes.

Positive Adjectives for Mother

No significant interaction was found between gender and attachment style on the dependent variable, positive adjectives for the mother, $F(3, 219) = 0.923, p > 0.05$. As the higher effect was not significant but an ordinal interaction was observed, main effects can be reported. A statistically significant main effect of gender was found, $F(1, 219) = 6.854, p < 0.05$. Using Cohen's (1988) criterion, the effect size was found to be small (partial eta squared = 0.03). Females ($M = 9.12$) used more positive adjectives to describe their mother than males ($M = 7.12$). A significant main effect for attachment style was also found, $F(3, 219) = 4.009, p < 0.05$. A small effect size was also observed (partial eta squared = 0.05). Post-hoc comparisons using the Scheffe test indicated that the secure group ($M = 11.03$) differed significantly from the three other groups: dismissing ($M = 7.89$), fearful ($M = 7.29$) and preoccupied ($M = 8.15$).

Negative Adjectives for Mother

No significant interaction was found between gender and attachment style on the dependent variable, negative adjectives used to describe the mother, $F(3, 219) = 0.159, p > 0.05$. A significant main effect for attachment style, but not gender, was found with respect to negative adjectives used to describe the mother, $F(3, 219) = 4.17, p < 0.05$. A small effect size was observed (partial eta squared = 0.05). However, as the graph depicts a disordinal interaction, the main effects cannot be taken at face value (see **Figure 3**). The Scheffe post hoc test indicated that participants with an avoidant-fearful attachment style used more negative adjectives to describe their mother ($M = 3.61$), compared to securely attached participants ($M = 1.67$).

Positive Adjectives for Father

No significant interaction was found between gender, attachment style on the dependent variable, positive adjectives used to describe the father, $F(3, 219) = 1.126, p > 0.05$. An ordinal interaction means the main effects can be reported. A significant main effect was found for gender, $F(1, 219) = 5.982, p < 0.05$. However, a large

Table 6. Summary of chi-square tests on adjectives used to describe the parental relationship ($N = 227$).

Adjectives	Secure % <i>SR</i>	Avoidant-Dismissing % <i>SR</i>	Avoidant-Fearful % <i>SR</i>	Anxious-Preoccupied % <i>SR</i>	$X^2(3, N = 227) p$
Affectionate	63.8 (1.6)	51.4 (0.1)	33.8 (-2.1)	58.5 (0.8)	0.002
Caring	81.2 (1.7)	59.5 (-0.4)	45 (-2.2)	78 (1.1)	0.001
Unhappy	5.8 (.6)	10.8 (-0.3)	22.5 (2.6)	4.9 (-1.4)	0.006
Distant	7.2 (-1.9)	10.8 (-0.8)	33.8 (3.9)	2.4 (-2.2)	0.001
Happy	72.5 (1.6)	54.1 (-0.3)	42.5 (-1.8)	68.3 (0.9)	0.001
Supportive	72.5 (1.2)	64.9 (0.3)	40 (-2.4)	80.5 (1.6)	0.000
Violent	1.4 (-0.9)	2.7 (-0.3)	7.5 (1.9)	0 (-1.2)	0.104
Troubled	5.8(-2.00)	13.5 (-0.3)	28.7(3.00)	7.3 (-1.3)	0.001
Argumentative	29 (-1.4)	45.9 (0.6)	48.8 (1.3)	34.1 (-.6)	0.066
Comfortable	73.9 (1.8)	51.4 (-0.5)	41.2 (-1.9)	68.3 (0.9)	0.001
Strained	7.2 (-2.4)	24.3 (0.5)	36.2 (3.2)	7.3 (-1.8)	0.001
Good-humoured	62.3 (1.4)	54.1 (0.3)	33.8 (-2.1)	58.5 (0.8)	0.003

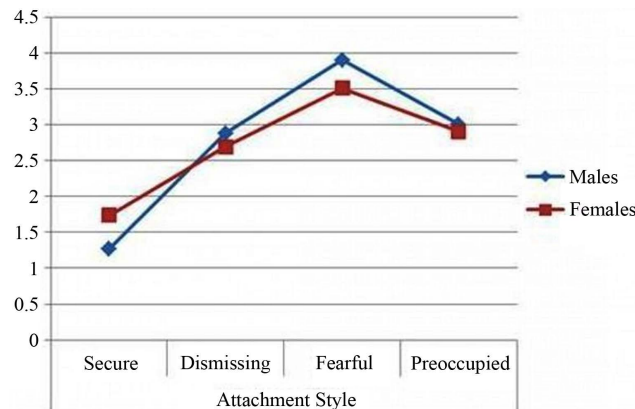


Figure 3. Mean scores for negative adjectives for mother based on gender and attachment style.

effect size was observed (partial eta squared = 0.27). Looking at the means, females ($M = 8.453$) used more positive adjectives to describe their father than males ($M = 6.635$). A significant main effect was also found for attachment style, $F(3, 219) = 6.506, p < 0.05$. A moderate effect size was found (partial eta squared = 0.082). Scheffe post hoc tests revealed that secure participants ($M = 10.29$) used significantly more positive adjectives to describe their father than those classified as avoidant-dismissing ($M = 7.43$) or avoidant-fearful ($M = 5.78$).

Negative Adjectives for Father

No significant interaction was found between gender and attachment style on the dependent variable, negative adjectives used to describe the father, $F(3, 219) = 0.658, p > 0.05$. However, a significant main effect for attachment style was found, $F(3, 219) = 7.098, p < 0.05$. A moderate effect size was observed (partial eta squared = 0.089). However, the graph revealed a disordinal interaction and therefore examining the results alone may be misleading (see [Figure 4](#)). Post-hoc tests analyses revealed that those classified as avoidant-fearful ($M = 3.51$) used significantly more negative adjectives to describe their father than those classified as secure ($M = 1.62$) or avoidant-dismissing ($M = 1.70$).

Positive Adjectives for Parental Relationship

No significant interaction was found between gender and attachment style on positive adjectives used to describe the parental relationship, $F(3, 219) = 0.733, p > 0.05$. However, a significant main effect for attachment style was found, $F(3, 219) = 6.485, p < 0.05$. A moderate effect size was observed (partial eta squared = 0.082). Again, a disordinal interaction was observed (see [Figure 5](#)). Scheffe post-hoc analyses revealed that those classified as avoidant-fearful ($M = 2.36$) used significantly less positive adjectives to describe their parental relationship than those classified as secure ($M = 4.26$) or anxious-preoccupied ($M = 4.12$).

Negative Adjectives for Parental Relationship

No significant interaction was found between gender, attachment style and negative adjectives used to describe the parental relationship, $F(3, 219) = 0.891, p > 0.05$. A significant main effect for attachment style was found, $F(3, 219) = 9.5, p < 0.05$, with a moderate effect size (partial eta squared = 0.12) and a disordinal interaction (see [Figure 6](#)). Scheffe post-hoc analyses found that those classified as avoidant-fearful ($M = 1.78$) used more negative adjectives than did those classified as secure ($M = 0.57$) or anxious-preoccupied ($M = 0.56$).

3.4.3. Hypothesis Three

Hypothesis three stated that adults involved in a current romantic relationship, compared to adults without a current relationship, would be differentiated as far as their attachment styles are concerned. The majority of secure participants (94.2%) were involved in a romantic relationship at the time of the study whereas over half of avoidant-fearful participants (57.5%) were not involved in a romantic relationship (see [Table 7](#)).

A Chi-square analysis revealed a statistically significant association between attachment style and the existence or not of a romantic relationship, $X^2(3, N = 227) = 45.88, p < 0.05$. Participants categorised as secure in their attachment style were significantly more likely to be involved in a romantic relationship (94.2%) ($SR = 2.8$). There was no statistically significant association between the existence of a romantic relationship and gender,

$X^2(1, N = 227) = 1.4, p > 0.05$

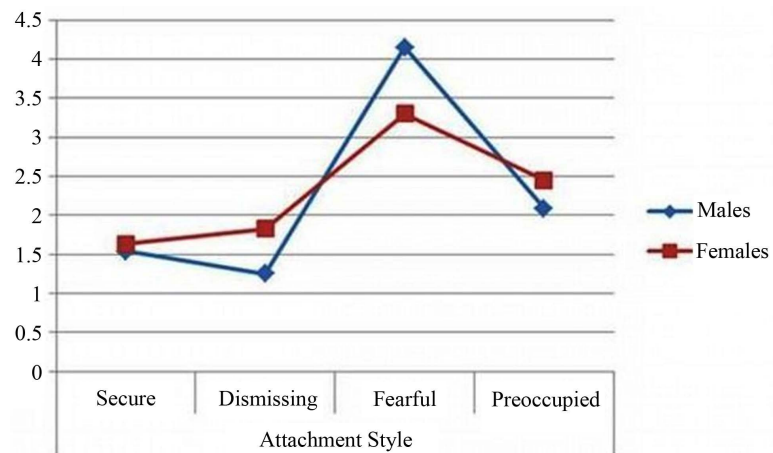


Figure 4. Mean scores for negative adjectives for father based on gender and attachment style.

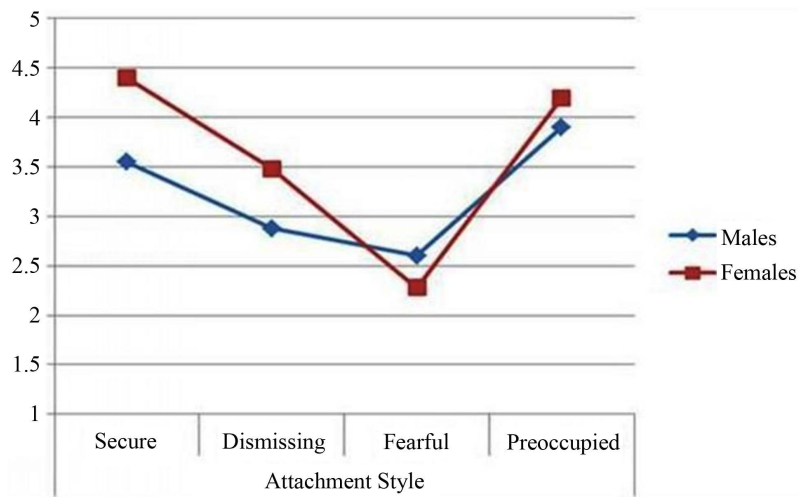


Figure 5. Mean scores for positive adjectives for parents' relationship based on gender and attachment style.

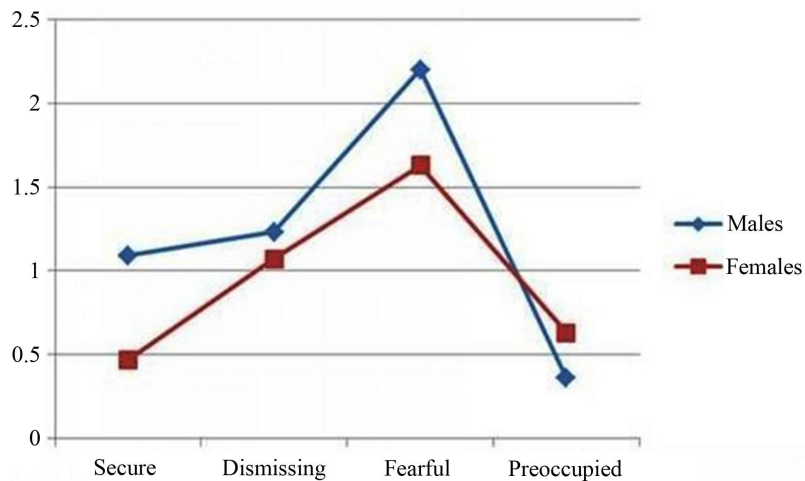


Figure 6. Mean scores for negative adjectives for parents' relationship based on gender and attachment style.

3.4.4. Hypothesis Four

In order to examine the relationship between attachment style and relationship satisfaction, a 2×4 non-repeated measures ANOVA was conducted. No significant association was found between gender and attachment style on the dependent variable relationship satisfaction, $F(3, 143) = 1.12; p > 0.05$. A significant main effect was observed for attachment style with respect to relationship satisfaction, $F(3, 143) = 15.01, p < 0.05$. However, the effect size was large (partial eta squared = 0.24). The graph depicts a disordinal interaction (see Figure 7). Scheffe post hoc tests suggest that secure participants ($M = 22.05$) tend to be the most satisfied in their relationships whereas avoidant-fearful participants are the least satisfied ($M = 16.73$) (see Table 8 for a summary of all the two-way Anovas conducted).

Table 7. Frequencies and percentages highlighting the presence or not of a romantic relationship according to attachment style.

Attachment Style	N	In a Relationship N (%)	Not in a Relationship N (%)
Secure	69	65 (94.2)	4 (5.8)
Avoidant-Dismissing	37	23 (62.2)	14 (37.8)
Avoidant-Fearful	80	34 (42.5)	46 (57.5)
Anxious-Preoccupied	41	30 (73.2)	11 (26.8)

Table 8. Summary of two-way ANOVAS (gender * attachment style) on variables under investigation.

	Gender Males	Females	Attachment Secure	Style Dismissing	Fearful	Preoccupied	HOV	F Interaction F (df, n)	F Gender F (df, n)	F Attachment F (df, n)	Post Hoc
Positive adjectives for mother	\bar{X} 7.12 <i>SD</i> 4.20 <i>n</i> 50	9.12 4.70 177	11.03 4.38 69	7.89 4.68 37	7.29 4.20 80	8.15 4.61 41	YES	$F(3, 219) = 0.923, p > 0.05$	$F(1, 219) = 6.854, p < 0.05$	$F(3, 219) = 4.009, p < 0.05$	Secure > Dismissing; Secure > Fearful; Secure > Preoccupied;
Negative adjectives for mother	\bar{X} 2.96 <i>SD</i> 2.93 <i>n</i> 50	2.69 3.08 177	1.67 1.64 69	2.73 3.12 37	3.61 3.65 80	2.93 3.01 41	NO	$F(3, 219) = 0.159, p > 0.05$	$F(1, 219) = 0.10, p > 0.05$	$F(3, 219) = 4.17, p < 0.05$	Secure < fearful
Positive adjectives for father	\bar{X} 6.58 <i>SD</i> 4.02 <i>n</i> 50	8.36 4.91 177	10.29 4.57 69	7.43 4.54 37	5.78 4.22 80	8.8 4.67 41	YES	$F(3, 219) = 1.126, p > 0.05$	$F(1, 219) = 5.982, p < 0.05$	$F(3, 219) = 6.506, p < 0.05$	Secure > Dismissing; Secure > Fearful; Fearful < Preoccupied
Negative adjectives for father	\bar{X} 2.66 <i>SD</i> 3.15 <i>n</i> 50	2.37 2.58 177	1.62 1.97 69	1.70 1.91 37	3.51 3.49 80	2.37 1.89 41	NO	$F(3, 219) = 0.658, p > 0.05$	$F(1, 219) = 0.1, p > 0.05$	$F(1, 219) = 7.098, p < 0.05$	Secure < Fearful > Dismissing
Positive adjectives for parental relationship	\bar{X} 3.14 <i>SD</i> 2.06 <i>n</i> 50	3.50 2.20 177	4.26 1.85 69	3.35 2.30 37	2.36 2.10 80	4.12 1.82 41	NO	$F(3, 219) = 0.733, p > 0.05$	$F(1, 219) = 1.098, p > 0.05$	$F(3, 219) = 6.485, p < 0.05$	Secure > Fearful < Preoccupied
Negative adjectives parental relationship	\bar{X} 1.38 <i>SD</i> 1.78 <i>n</i> 50	0.99 1.36 177	0.57 1.01 69	1.08 1.44 37	1.78 1.78 80	0.56 0.81 41	NO	$F(3, 219) = 0.891, p > 0.05$	$F(1, 219) = 1.113, p > 0.05$	$F(3, 219) = 9.504, p < 0.05$	Secure < Fearful > Preoccupied
Relationship satisfaction	\bar{X} 19.60 <i>SD</i> 4.57 <i>n</i> 30	20.14 3.77 121	22.05 2.66 64	19.65 3.37 23	16.73 4.61 43	19.8 3.18 30	NO	$F(3, 143) = 1.124, p > 0.05$	$F(1, 143) = 0.345, p > 0.05$	$F(3, 143) = 15.014, p < 0.05$	Secure > all; Dismissing > Fearful; Preoccupied > Fearful

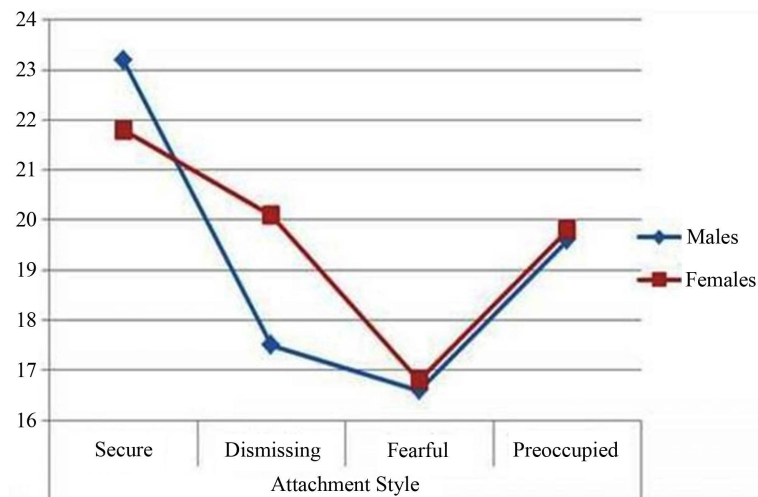


Figure 7. Mean scores for relationship satisfaction based on gender and attachment style.

4. Discussion

The present study sought to explore the association between adult attachment styles in romantic relationships, perceptions of parents from childhood, and relationship satisfaction. The results suggest that those who are securely attached in their romantic relationships are more satisfied and perceive their parents in a more positive light when reflecting on childhood than insecurely attached participants, especially those in the avoidant-fearful category.

The first hypothesis, which stated that males and females would differ in terms of their attachment style, was not supported. The majority of males were classified as avoidant-fearful, a finding similar to previous research [14], while females tended to be classified as either avoidant-fearful or secure. Gender differences have been found with respect to avoidant attachment, with the tendency for males to engage in an avoidant-dismissing style and females to engage in an avoidant-fearful style [20] [43] [44]. Another unexpected finding in the present study is the relatively low percentage of securely attached males and females which is contrary to previous research [12] this finding has emerged in other studies examining young adults [14].

Hypothesis two which stated that adult attachment styles would be closely related to perceptions of parents from childhood, as evident in the adjectives they used to describe them, was supported. Participants with a secure attachment style used more positive adjectives to describe their mother, father, and their parents' relationship. More specifically, they tended to describe their mother as confident and sympathetic and their father as fair, understanding, and attentive. In contrast, participants with an avoidant-fearful attachment style used more negative adjectives to describe their parents. For example, they tended to describe their mother as unpredictable and inconsistent, their father as troubled and disinterested, and their parents' relationship as unhappy. These results correspond with previous research, which suggests that those who are securely attached in adult romantic relationships are more likely to perceive the early relationship with their parents in a positive light, whereas those with an avoidant attachment pattern tend to view it negatively [16] [18]. In Carranza and Kilmann's [45] study, for example, females classified as avoidant-fearful tended to use characteristics describing their father as distant and their mother as absent.

Hypothesis three which stated that adults involved in a current romantic relationship, compared to adults without a current relationship, would differ in terms of their attachment styles was supported. The majority of secure participants were involved in a romantic relationship at the time of the study, whereas over half of avoidant-fearful participants were not. This corresponds with previous research which states that those with a secure attachment are willing to get close to others, have a higher sense of self-worth, and value others more highly [14]. On the other hand, individuals categorised as avoidant-fearful often regard themselves as unworthy and tend to avoid close relationships with others in order to protect themselves against anticipated rejection [20]. In the present study, however, more avoidant-dismissing participants than expected were involved in a romantic relationship. This is surprising considering such individuals tend to avoid close relationships by maintaining in-

dependence in order to protect themselves against disappointment [20]. An explanation for this finding may be that dismissing individuals who are committed in relationships often remain independent and self-sufficient, allowing themselves to avoid unwanted intimacy or they may choose romantic partners with a similar attachment style [46].

Finally, hypothesis four which stated that secure attachment would be positively associated with romantic relationship satisfaction, while insecure attachment would be negatively associated with relationship satisfaction, was supported. Secure participants were found to be more satisfied in their current relationship than the three insecure attachment styles perhaps reflecting their capacity to provide and experience love, care and support [12] [16]. Avoidant-fearful participants were the least satisfied with their relationship. Research suggests that more avoidant and anxious individuals are characterised by a variety of dysfunctional relationship behaviours, thoughts and feelings which lead them and their partners to be less satisfied [2]. Gender differences were not observed with respect to attachment style and relationship satisfaction which compliments previous research [25] [27] [28].

Theoretical Issues

The variability in the approaches taken to measure attachment may account for the inconsistency of the results, especially concerning the frequency of specific attachment orientations. Early research used a three-category model of attachment (e.g. Hazan & Shaver, 1987), before the four attachment styles derived from Bartholomew and Horowitz's [20] model became prominent. Using this model combined with Brennan *et al.*'s [19] anxiety and avoidance dimensions, more recent research assessed attachment style as being continuous rather than categorical in nature [47] [48]. While these approaches are all highly related, attachment classifications across measures do not always correlate [8] [21]. Both the categorical and dimensional approaches are meaningful ways of looking at attachment and one has not been found to be more powerful than the other [49] [50]. While the dimensional approach may be statistically advantageous [51] the classification system distinguishes between various ways of manifesting attachment insecurity and this has led to the recognition of the preoccupied attachment style, which is regarded as the strongest single predictor of later psychopathology [50].

The current study has numerous strengths worth considering. Firstly, the topic is heavily rooted in empirical research and while the theory is not new, research has validated its clinical importance. The use of standardised scales is a key strength, particularly the use of the ECR-R which has been regarded as one of, if not the, most appropriate self-report measure of attachment currently available [52]. Furthermore, incorporating a reliable measure of relationship satisfaction adds to previous research which has just examined connections between early parenting and attachment styles in adulthood (e.g. [12] [14]). The inclusion of participants who were not students enhanced the generalizability of the findings and this was important considering much research on romantic relationship attachment has focused solely on university students [12] [14] [16]. On a theoretical level, attachment research has emphasised the role of the mother with some exceptions examining the role of the father [12] [13] [15] [16]. This research adds to the literature by assessing perceptions of both parents and the parental relationship. This is important considering research has increasingly recognised the vital role played by the father in early life [53] [54].

The limitations of the current study provide directions for future research. Self-report measures are highly subjective and they increase the possibility of social-desirability biases [55]. Retrospective self-reports of childhood may not always be reliable due to the fallibility of human memory [13] [56]. However, attachment theory is not only concerned with the relationship as it can be observed from outside but particularly how it can be inferred from the individual's internal perspective on the relationship, therefore self-report measures of attachment are useful [49].

Furthermore, it is important to acknowledge the possibility of bidirectional influences: the quality of both the current romantic relationship and current relationship with parents may shape how participants' perceive early child-parent relationships [13] [57]. In the present study, it is not possible to make inferences about the causal direction of the relationships under examination. Therefore, future research could benefit from the use of longitudinal studies which may offer insight into how early parenting behaviours act as predictors of later relationship functioning while also monitoring changes in an individual's internal working model of attachment over time [13] [21]. Furthermore, while Hazan and Shaver's [12] Adjective Checklist was useful for gaining an insight into more general positive or negative perceptions of parents in childhood, future research could incorporate the use of the AAI to provide a more in-depth examination of participants' mental representations of early attach-

ment experiences with parents [22].

An additional limitation is the disproportionate number of females compared to males in the present study. This was addressed by comparing a random sample of females and the full sample of females to check for similarities. Nevertheless, a larger and more representative sample of males may have produced different results. An extreme variability with regard to male-to-female ratios is evident in research using web-based surveys [58]. In a meta-analysis which examined romantic attachment research using web-based surveys, only 24% of participants were male which may indicate that males are less interested in online questionnaires about romantic relationships [58]. Furthermore, gender differences in romantic attachment tend to be more pronounced in research using community and college samples and less evident in web-based surveys which may also explain the current findings [58]. In order to accurately examine gender differences in romantic attachment, perhaps large demographically representative samples would be more appropriate [58]. The current study did not collect specific demographic information on participants. While this study was looking at a general association between adult attachment and perception of parents in childhood, future research could explore the impact of other variables on attachment relationships, such as socio-economic factors for example, which has been linked to relationship quality [59].

Finally, as this study only catered for traditional families whereby a mother and father were present throughout childhood, future research should examine attachment within single-parent and other non-traditional families [13]. The impact of specific life events, such as parental divorce, on attachment orientations in adulthood are important to consider as those who experience this tend to be less securely attached, report greater relationship problems and are more likely to have an avoidant-fearful attachment style [60].

The present study compliments previous research which suggests that there is a connection between perceptions of one's early parental relations and attachment in adult romantic relationships. This study expanded current research on attachment styles to incorporate relationship satisfaction. In this sample of young adults, those with a secure attachment style perceived their parents in a much more positive light than those with an avoidant attachment style. Furthermore, those classified as secure were more likely to be involved in a romantic relationship at the time of the study, and reported being more satisfied. Fearful-avoidant participants were less likely to be in a romantic relationship, and those that were tended to report experiencing dissatisfaction in their relationships.

References

- [1] Bowlby, J. (1969) *Attachment and Loss: Vol. 1. Attachment*. Basic Books, New York.
- [2] Feeney, J.A. (2008) *Adult Romantic Attachment: Developments in the Study of Couple Relationships*. In: Cassidy, J. and Shaver, P.A., Eds., *Handbook of Attachment: Theory, Research, and Clinical Applications*, 2nd Edition, Guilford Press, New York, 456-481.
- [3] Ainsworth, M.D.S., Blehar, M.C., Waters, E. and Wall, S. (1978) *Patterns of Attachment: A Psychological Study of the Strange Situation*. Erlbaum, Hillsdale.
- [4] Main, M. and Solomon, J. (1990) *Procedures for Identifying Disorganised/ Disorientated Infants during the Ainsworth Strange Situation*. In: Greenberg, M., Cicchetti, D. and Cummings, M., Eds., *Attachment in the Preschoolyears*, University of Chicago Press, Chicago, 121-160.
- [5] Bartholomew, K. and Horowitz, L.M. (1991) Attachment Styles among Young Adults: A Test of a Four Category Model. *Journal of Personality and Social Psychology*, **2**, 226-244. <http://dx.doi.org/10.1037/0022-3514.61.2.226>
- [6] Crowell, J.A., Treboux, D. and Waters, E. (2002) Stability of Attachment Representations: The Transition to Marriage. *Developmental Psychology*, **38**, 467-479. <http://dx.doi.org/10.1037/0012-1649.38.4.467>
- [7] Waters, E., Hamilton, C.E. and Weinfield, N.S. (2000) The Stability of Attachment Security from Infancy to Adolescence and Early Adulthood: General Introduction. *Child Development*, **71**, 678-683. <http://dx.doi.org/10.1111/1467-8624.00175>
- [8] Miga, E.M., Hare, A., Allen, J.P. and Manning, N. (2010) The Relation of Insecure Attachment States of Mind and Romantic Attachment Styles to Adolescent Aggression in Romantic Relationships. *Attachment & Human Development*, **12**, 463-481. <http://dx.doi.org/10.1080/14616734.2010.501971>
- [9] George, C., Kaplan, N. and Main, M. (1985) *Adult Attachment Interview Protocol*. Unpublished Manuscript, University of California, Berkeley.
- [10] Hesse, E. (2008) *The Adult Attachment Interview: Protocol, Method of Analysis, and Empirical Studies*. In: Cassidy, J. and Shaver, P.R., Eds., *Handbook of Attachment: Theory, Research, and Clinical Applications*, 2nd Edition, Guilford

Press, New York, 552-598.

- [11] Carr, A. (2011) *Positive Psychology*. Routledge, East Sussex.
- [12] Hazan, C. and Shaver, P.R. (1987) Romantic Love Conceptualised as an Attachment Process. *Journal of Personality and Social Psychology*, **52**, 511-524. <http://dx.doi.org/10.1037/0022-3514.52.3.511>
- [13] Dalton, W.T., Frick-Horbury, D. and Kitmann, K.M. (2006) Young Adults' Retrospective Reports of Parenting by Mothers and Fathers: Associations with Current Relationship Quality. *The Journal of General Psychology*, **133**, 5-18. <http://dx.doi.org/10.3200/GENP.133.1.5-18>
- [14] Vorria, P., Vairami, M., Gialaouzidis, M., Kotroni, E., Koutra, G., Markou, N., Marti, E. and Pantoleon, I. (2007) Romantic Relationships, Attachment Styles, and Experiences of Childhood. *Hellenic Journal of Psychology*, **4**, 281-309.
- [15] Collins, N.L. and Read, S.J. (1990) Adult Attachment, Working Models, and Relationship Quality in Dating Couples. *Journal of Personality and Social Psychology*, **58**, 644-663. <http://dx.doi.org/10.1037/0022-3514.58.4.644>
- [16] Feeney, J.A. and Noller, P. (1990) Attachment Style as a Predictor of Adult Romantic Relationships. *Journal of Personality and Social Psychology*, **58**, 281-291. <http://dx.doi.org/10.1037/0022-3514.58.2.281>
- [17] Diehl, M., Elnick, A.B., Bourbeau, L.S. and Labouvie-Vief, G. (1998) Adult Attachment Styles: Their Relations to Family Context and Personality. *Journal of Personality and Social Psychology*, **74**, 1656-1669. <http://dx.doi.org/10.1037/0022-3514.74.6.1656>
- [18] Levy, K.N., Blatt, S.J. and Shaver, P.R. (1998) Attachment Styles and Parental Representations. *Journal of Personality and Social Psychology*, **74**, 407-419. <http://dx.doi.org/10.1037/0022-3514.74.2.407>
- [19] Brennan, K.A., Clarke, C.L. and Shaver, P.R. (1998) Self-Report Measurement of Adult Romantic Attachment: An Integrative Overview. In: Simpson, J.A. and Rholes, W.S., Eds., *Attachment Theory and Close Relationships*, Guilford, New York, 46-76.
- [20] Bartholomew, K. and Horowitz, L.M. (1991) Attachment Styles among Young Adults: A Test of a Four Category Model. *Journal of Personality and Social Psychology*, **2**, 226-244. <http://dx.doi.org/10.1037/0022-3514.61.2.226>
- [21] Holmes, B.M. and Johnson, K.R. (2009) Adult Attachment and Romantic Partner Preference: A Review. *Journal of Social and Personal Relationships*, **26**, 833-852. <http://dx.doi.org/10.1177/0265407509345653>
- [22] Barone, L. and Guiducci, V. (2009) Mental Representations of Attachment in Eating Disorders: A Pilot Study Using the Adult Attachment Interview. *Attachment and Human Development*, **11**, 405-417. <http://dx.doi.org/10.1080/14616730902814770>
- [23] Freeman, H. and Almond, T.M. (2010) Mapping Young Adults' Use of Fathers for Attachment Support: Implications on Romantic Relationship Experiences. *Early Child Development and Care*, **180**, 227-248. <http://dx.doi.org/10.1080/03004430903415080>
- [24] Roisman, G.I., Collins, W.A., Sroufe, L.A. and Egeland, B. (2005) Predictors of Young Adults' Representations of and Behaviour in Their Current Romantic Relationship: Prospective Tests of the Prototype Hypothesis. *Attachment & Human Behaviour*, **7**, 105-121. <http://dx.doi.org/10.1080/14616730500134928>
- [25] Lowyck, B., Luyten, P., Demyttenaere, K. and Corveleyn, J. (2008) The Role of Romantic Attachment and Self-Criticism and Dependency for the Relationship Satisfaction of Community Adults. *Journal of Family Therapy*, **30**, 78-95. <http://dx.doi.org/10.1111/j.1467-6427.2008.00417.x>
- [26] McCarthy, G. and Maughan, B. (2010) Negative Childhood Experiences and Adult Love Relationships: The Role of Internal Working Models of Attachment. *Attachment & Human Development*, **12**, 445-461. <http://dx.doi.org/10.1080/14616734.2010.501968>
- [27] Mikulincer, M., Florian, V., Cowan, P.A. and Cowan, C.P. (2002) Attachment Security in Couple Relationships: A Systemic Model and Its Implications for Family Dynamics. *Family Process*, **41**, 405-434. <http://dx.doi.org/10.1111/j.1545-5300.2002.41309.x>
- [28] Simpson, J.A. (1990) Influence of Attachment Styles on Romantic Relationships. *Journal of Personality and Social Psychology*, **59**, 971-980. <http://dx.doi.org/10.1037/0022-3514.59.5.971>
- [29] Haydon, K.C., Roisman, G.I., Marks, M.J. and Fraley, R.C. (2011) An Empirically Derived Approach to the Latent Structure of the Adult Attachment Interview: Additional Convergent and Discriminant Validity Evidence. *Attachment & Human Development*, **13**, 503-524. <http://dx.doi.org/10.1080/14616734.2011.602253>
- [30] Holland, A.S. and Roisman, G.I. (2010) Adult Attachment Security and Young Adults' Dating Relationships over Time: Self-Reported, Observational and Physiological Evidence. *Developmental Psychology*, **46**, 552-557. <http://dx.doi.org/10.1037/a0018542>
- [31] Florsheim, P. (2008) *Adolescent Romantic Relations and Sexual Behaviour: Theory, Research and Practical Implications*. Taylor & Francis, Mahwah, New Jersey.
- [32] Frost, D.M. and Forrester, C. (2013) Closeness Discrepancies in Romantic Relationships: Implications for Relational

- Well-Being, Stability and Mental Health. *Personality and Social Psychology Bulletin*, **39**, 456-469. <http://dx.doi.org/10.1177/0146167213476896>
- [33] Fraley, R.C., Waller, N.G. and Brennan, K.A. (2000) An Item Response Theory Analysis of Self-Report Measures of Adult Attachment. *Journal of Personality and Social Psychology*, **78**, 350-365. <http://dx.doi.org/10.1037/0022-3514.78.2.350>
- [34] Ravitz, P., Mauder, R., Hunter, J., Sthankiya, B. and Lancee, W. (2010) Adult Attachment Measures: A 25-Year Review. *Journal of Psychosomatic Research*, **69**, 419-432. <http://dx.doi.org/10.1016/j.jpsychores.2009.08.006>
- [35] Funk, J.L. and Rogge, R.D. (2007) Testing the Ruler with Item Response Theory: Increasing Precision of Measurement for Relationship Satisfaction with the Couples Satisfaction Index. *Journal of Family Psychology*, **21**, 572-583. <http://dx.doi.org/10.1037/0893-3200.21.4.572>
- [36] Graham, J.M., Diebels, K.J. and Barnow, Z.B. (2011) The Reliability of Relationship Satisfaction: A Reliability Generalisation Meta-Analysis. *Journal of Family Psychology*, **25**, 39-48. <http://dx.doi.org/10.1037/a0022441>
- [37] Qualtrics Labs, Inc. (2013) Survey Research Suite Software. Qualtrics Labs, Inc., Provo, Utah.
- [38] Hampton, K., Goulet, S.L., Rainie, L. and Purcell, K. (2011) Social Networking Sites and Our Lives. Pew Internet and American Life Project, Washington DC. <http://www.pewinternet.org/files/old-media/Files/Reports/2011/PIP%20-%20Social%20networking%20sites%20and%20our%20lives.pdf>
- [39] Stevens, J. (1996) Applied Multivariate Statistics for the Social Sciences. 3rd Edition, Lawrence Erlbaum, Mahway, NJ.
- [40] Coolican, H. (2013) Research Methods and Statistics in Psychology. 5th Edition, Routledge, New York.
- [41] Field, A., Miles, J. and Field, Z. (2012) Discovering Statistics Using R. Sage Publications Ltd., London.
- [42] Benjamini, Y. and Hochberg, Y. (1995) Controlling the False Discovery Rate: A Practical and Powerful Approach to Multiple Testing. *Journal of the Royal Statistical Society. Series B (Methodological)*, **57**, 289-300.
- [43] Brennan, K.A., Shaver, P.R. and Tobey, A.E. (1991) Attachment Styles, Gender and Parental Problem Drinking. *Journal of Social and Personal Relationships*, **8**, 451-466. <http://dx.doi.org/10.1177/026540759184001>
- [44] Koskina, N. and Giovazolias, T. (2010) The Effect of Attachment Insecurity in the Development of Eating Disturbances across Gender: The Role of Body Dissatisfaction. *The Journal of Psychology*, **144**, 449-471. <http://dx.doi.org/10.1080/00223980.2010.496651>
- [45] Carranza, L.V. and Kilmann, P.R. (2000) Links between Perceived Parent Characteristics and Attachment Variables for Women from Intact Families. *Adolescence*, **35**, 295-312.
- [46] Mikulincer, M. and Shaver, P.R. (2007) Attachment in Adulthood. Structure, Dynamics and Change. The Guilford Press, London.
- [47] Fraley, R.C. and Shaver, P.R. (2000) Adult Romantic Attachment: Theoretical Developments Emerging Controversies and Unanswered Questions. *Review of General Psychology*, **4**, 132-154. <http://dx.doi.org/10.1037/1089-2680.4.2.132>
- [48] Fraley, R.C. and Spieker, S.J. (2003) What Are the Differences between Dimensional and Categorical Models of Individual Differences in Attachment? Reply to Cassidy (2003), Cummings (2003), Sroufe (2003) and Waters and Beauchaine (2003). *Developmental Psychology*, **39**, 423-429. <http://dx.doi.org/10.1037/0012-1649.39.3.423>
- [49] Cowan, P.A. and Cowan, C.P. (2007) Attachment Theory: Seven Unresolved Issues and Questions for Future Research. *Research in Human Development*, **4**, 181-201. <http://dx.doi.org/10.1080/15427600701663007>
- [50] Sroufe, A. (2003) Attachment Categories as Reflections of Multiple Dimensions: Comment on Fraley and Spieker (2003). *Developmental Psychology*, **39**, 413-416. <http://dx.doi.org/10.1037/0012-1649.39.3.413>
- [51] Fraley, R.C. (2012) Information on the Experiences in Close Relationships Revised (ECR-R) Adult Attachment Questionnaire. <http://internal.psychology.illinois.edu/~rcfraley/measures/ecrr.htm>
- [52] Sibley, C.G., Fischer, R. and Liu, J.H. (2005) Reliability and Validity of the Revised Experiences in Close Relationships (ECR-R) Self-Report Measure of Adult Romantic Attachment. *Personality and Social Psychology Bulletin*, **31**, 1524-1536. <http://dx.doi.org/10.1177/0146167205276865>
- [53] Fletcher, R. (2009) Promoting Infant Well-Being in the Context of Maternal Depression by Supporting the Father. *Infant Mental Health Journal*, **30**, 95-102. <http://dx.doi.org/10.1002/imhj.20205>
- [54] George, M.R.W., Cummings, E.M. and Davies, P.T. (2010) Positive Aspects of Fathering and Mothering and Children's Attachment in Kindergarten. *Early Child Development and Care*, **180**, 107-119. <http://dx.doi.org/10.1080/03004430903414752>
- [55] Shaughnessy, J., Zechmeister, E. and Zechmeister, J. (2006) Research Methods in Psychology. 7th Edition, McGraw Hill, New York.

- [56] Hardt, J. and Rutter, M. (2004) Validity of Adult Retrospective Reports of Adverse Childhood Experiences: Review of the Evidence. *Journal of Child Psychology and Psychiatry*, **45**, 260-273. <http://dx.doi.org/10.1111/j.1469-7610.2004.00218.x>
- [57] Brewin, C., Andres, B. and Gotlib, I. (1993) Psychopathology and Early Experience: A Reappraisal of Retrospective Reports. *Psychological Bulletin*, **113**, 82-98. <http://dx.doi.org/10.1037/0033-2909.113.1.82>
- [58] Del Giudice, M. (2011) Sex Differences in Romantic Attachment: A Meta-Analysis. *Personality and Social Psychology Bulletin*, **37**, 193-214. <http://dx.doi.org/10.1177/0146167210392789>
- [59] Tarabulsy, G.M., Larose, S., Bernier, A., Trottier-Sylvain, K., Girard, D., Vargas, M. and Noël, C. (2012) Attachment States of Mind in Late Adolescence and the Quality and Course of Romantic Relationships in Adulthood. *Attachment and Human Development*, **14**, 621-643. <http://dx.doi.org/10.1080/14616734.2012.728358>
- [60] Kilmann, P.R., Carranza, L.V. and Vendemia, J.M.C. (2006) Recollections of Parent Characteristics and Attachment Patterns for College Women of Intact vs. Non Intact Families. *Journal of Adolescence*, **29**, 89-102. <http://dx.doi.org/10.1016/j.adolescence.2005.01.004>

Scientific Research Publishing (SCIRP) is one of the largest Open Access journal publishers. It is currently publishing more than 200 open access, online, peer-reviewed journals covering a wide range of academic disciplines. SCIRP serves the worldwide academic communities and contributes to the progress and application of science with its publication.

Other selected journals from SCIRP are listed as below. Submit your manuscript to us via either submit@scirp.org or [Online Submission Portal](#).

