

GIS-Hydrogeochemical Model of the Yaoundé Fractured Rock Aquifer, Cameroon: Aquifer Setting, Seasonal Variations in Groundwater-Rock Interaction and Water Quality

Richard Ayuk II Akoachere^{1*} , Omabgemi Omololu Yaya², Sonia Ebot Egbe¹, Thomson Areakpoh Eyong¹, Bihmimihney Nelly Nji¹, Diana Besem Tambe³

¹Department of Geology, University of Buea, Buea, Cameroon

²National Water Resources Institute, Kaduna, Nigeria

³Advanced School of Public Works, Yaoundé, Cameroon

Email: *r.akoachere@ubuea.cm

How to cite this paper: Akoachere, R. A. II, Yaya, O. O., Egbe, S. E., Eyong, T. A., Nji, B. N., & Tambe, D. B. (2019). GIS-Hydrogeochemical Model of the Yaoundé Fractured Rock Aquifer, Cameroon: Aquifer Setting, Seasonal Variations in Groundwater-Rock Interaction and Water Quality. *Journal of Geoscience and Environment Protection*, 7, 232-263.

<https://doi.org/10.4236/gep.2019.75018>

Received: March 12, 2019

Accepted: May 27, 2019

Published: May 30, 2019

Copyright © 2019 by author(s) and Scientific Research Publishing Inc. This work is licensed under the Creative Commons Attribution International License (CC BY 4.0).

<http://creativecommons.org/licenses/by/4.0/>



Open Access

Abstract

This study of the gneiss-fractured-rock aquifer in Yaoundé capital of Cameroon determines: the aquifer setting-flow systems, the aquifer type, seasonal variations in rock-water interactions, evolution of the hydrogeochemical processes, physicochemical parameters and the suitability for domestic-agro-industrial use of the groundwater. Physicochemical field tests were carried out on 445 wells during four seasons for EC, pH, TDS, Temperature and static water level from July 2016 to May 2017. 90 well samples were analyzed 45 samples per season: wet/dry. 38 borewell logs were used together with structural data to determine the aquifer setting. The field physico-chemical and laboratory analysis data of well samples were mounted onto various GIS software platforms: Global mapper, AqQa, Aquachem, Rockworks, Logplot7, Surfer and ArcGIS, to get indices/parameters/figures, by use of Durov's, Piper's and Gibbs diagrams, Water quality index WQI, USSL ratio, Sodium Absorption ratio SAR, Percent sodium %Na, Kelly Ratio KR, Magnesium Absorption Ratio MAR, Total Hardness TH, Residual Sodium Carbonate RSC and Permeability Index PI that were determined. The process of groundwater ions acquisition is three-fold: by recharge through atmospheric precipitation, by ion exchange/simple dissolution between the rock-groundwater and by groundwater mixing in its flow path. Water types are Ca-HCO₃, Mg-HCO₃ and Mg-Cl while hydrogeochemical facies are Ca-Mg-HCO₃ and Ca-Mg-Cl-SO₄. Most water samples are fresh, potable and soft all seasons. The hydrogeologi-

cal conceptual model is that of a three-layered single phreatic fractured-rock-aquifer while other researchers postulated a two-aquifer, phreatic and semi-confined, two-layered model.

Keywords

GIS-Hydrogeochemical Model, Groundwater-Rock Interaction, Fractured Rock Aquifer, Aquifer Setting, Water Quality, Yaoundé, Cameroon

1. Introduction

Yaoundé city, Mfoundi division in the Centre Province is the capital city of Cameroon. The main activities carried out in the study area seat of all ministerial head offices are mostly the business of government, industrial activities and small scale agriculture. Yaoundé has a typical Classic equatorial Guinean climate which is tropically wet and dry with a regular and abundant precipitation (1600 mm per day), an average annual air temperature of approximately 24°C and an evaporation of about 800 mm per year (Fouepe et al. 2011). This climate is characterized by four seasons: eight months of rainy season, from mid-August to mid-November and four months of dry season from mid-November to February. The climate also has a short rainy season from March-June and a short dry season from July-August.

Yaoundé's population is 3.066 million with a growth rate between 6% and 8% per annum (United States Central Intelligence Agency, 2018). This growth rate far exceeds the rate of development of infrastructure. As such, the government is left with a fire-brigade-reflex of pre-planned new-layouts and lots in response to housing; hoping other services will follow later. This results in chaotic urbanization which makes the development of water supply infrastructure problematic.

In Cameroon, pipe-borne water supply systems are presently catering for the needs of less than 50% of cities and towns. In Yaoundé, less than 30% of households have direct access to drinking water. This rate falls to less than 20% for households that have access to the drinking water network in sub-urban centers with <100,000 inhabitants and since the supply is erratic, most people will at some point use either wells, springs or rivers (Fouepe et al., 2011; Nola et al., 1998; Djeuda et al., 1999; Tanawa et al., 2002).

Dugwells are the most popular source of groundwater in villages and towns in Cameroon. Classifying the sources of groundwater by uses in order of importance in Yaoundé is as follows: dugwells 80% > springs 6% > borewells 4%. This is due to the fact that dugwells are easier to construct, need less complex technical skills, are cheaper and as such more cosmopolitan. Every house has one where possible. In Yaoundé where there are over 3000 dugwells, there are three dugwells in one household at Melen quarters, each belonging to one of three feuding brothers.

In Cameroon, sedimentary basins make up less than 20% of the land surface.

As such, over 80% of the aquifers systems are fractured rock aquifers of igneous and metamorphic origin. There are however very few studies on the fractured rock aquifer systems in Cameroon.

The future development and expansion of Yaoundé as a capital city might depend on whether or not there is availability of water in quantity and in quality for use by the population. The Yaoundé fractured rock aquifer is therefore of great interest. Potable water is an existentially essential resource. There is a critical need for a complete understanding of the hydrogeology of the capital city Yaoundé. Also, the absence of proactive water management tools for planning an integrated hydrogeological approach to understanding the hydrogeology of Yaoundé begs our attention. The development of the full potential of this fractured rock aquifer depends on its systems/structural styles, an understanding of the rock/groundwater interaction, hydrogeochemical evolution, and the groundwater quality status for all uses and these must be part of the solution to satisfying the water needs of Yaoundé and other major fractured rock aquiferous formations in Cameroon.

Groundwater is a critical resource for people and ecosystems and tools are needed for efficient data management so that more technically sound and community-supported decisions may be made (Rossetto et al., 2018). This informed our decision to carry out this study to provide tools such as; chemical parameters and indices from analysis, interpretation of field data and the proposal of a good conceptual model of the aquiferous formations in Yaoundé.

Although a comprehensive hydrogeological investigation has not been made heretofore of the whole city of Yaoundé, many researchers have carried out works on selected groundwater topics and in parts of Yaoundé. Notable amongst them are: Flow dynamics of lineaments in Yaoundé (Teikeu et al., 2016); mass balance of Nitrogen and Potassium in parts of Yaoundé (Kringel et al., 2016); assessment of groundwater quality for domestic and irrigation purposes in parts of Yaoundé (Tabue et al., 2012); use of geoelectric tools to explore the lithostratigraphy of the aquiferous formations in parts of Yaoundé (Teikeu et al., 2012); assessment of bacterial contamination in the Mfoundi Watershed (Kuitcha et al., 2010) and modeling of groundwater flow in Yaoundé IV district (Fouepe et al., 2011).

This study of the whole city of Yaoundé aimed at giving an in-depth into the hydrogeology of Yaoundé describes work on; the aquifer flow systems, hydrogeochemical processes in groundwater/rock interaction, a new conceptual model of the aquifer system(s), the seasonal variations in groundwater physico-chemical parameters and groundwater chemical quality all of which have not been dealt with in-depth by the other researchers; is situated between longitudes 11.42°E to 11.56°E and latitudes 3.78° to 3.92°N with elevations of 550 - 772 m. a.m.s.l (meters above mean sea level) covering an area of (12.41 Km × 17.12 Km) 212.46 Km².

Hydrology, Geology and Hydrogeology

Yaoundé city is drained by the Mfoundi River and its many tributaries. The stream and river network is dense and dendritic **Figure 1**. The Yaoundé series

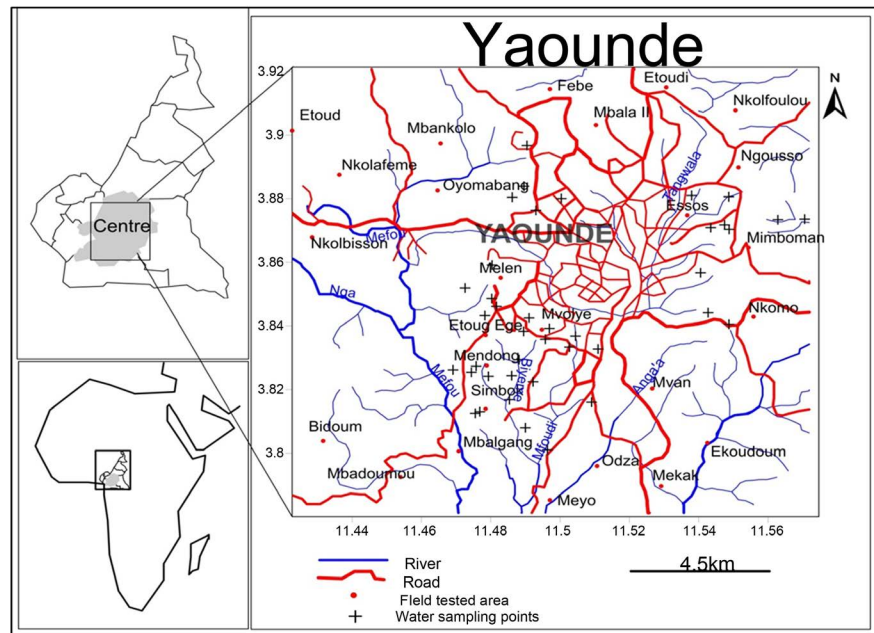


Figure 1. Study location map; Drainage, field tested wells and sample collection points in Yaoundé.

are a group of rocks that outcrop extensively around the Yaoundé city. They belong to a regional scale mapped unit thrust southwards unto to the Congo craton that resulted from the collision of the northern Cameroon basin and the Congo craton to the south. As a result of this collision, rocks of the Yaoundé series were squeezed and pushed over the Ntem and Nyong complexes by thrusting. Following this collision, the rocks of the northern Cameroon basement and those of the Congo craton were then fused together by the Yaoundé series to form a suture zone leading to the Yaoundé series having a high dip to the south. The Yaoundé series comprises of low to high garnet-bearing metapelites and orthogneisses metamorphosed under a medium to high pressure metamorphism reaching the granulite facies ($T = 750^{\circ}\text{C} - 800^{\circ}\text{C}$ and $P = 100 - 1200 \text{ Mpa}$). Meta-intrusive rocks include mafic to intermediate rocks; pyroclastics and serpenitized chromite and nickel, ferrous ultramafic rocks associated with gabbro, diorites and mafic dykes. The Yaoundé gneisses were probably derived from the metasediments of shales and greywacke deposited in an extensional environment related to the Congo craton (Nzenti et al., 1988). This basement consists of insoluble and impervious migmatites, gneisses and schists transpierced by faults and diaclases that give fissure permeability to the anisotropic and heterogeneous formations, which are highly weathered, producing predominantly well-drained Ferralitic soils. These weathered soils with relics of fractures from the pristine rocks serve as aquifers for shallow groundwater, while fractures and faults in deeper unaltered rock constitute the deeper aquifer. The hydrodynamic functioning of the weathered horizon-fresh rock system acts as a two layer aquifer components because the weathered zone contains the groundwater, which is drained by fractures in the rocks. The weathered horizon constitutes a shallow

aquifers with thickness that varies from about 1 to 20 m, with a hydraulic conductivity from 10^{-4} to 10^{-6} m/s. Due to the undulating nature of the relief, the shallow aquifer gives rise to springs that ooze at the base of slopes forming spring lines and wetlands, which serve as discharge zones (springs and shallow wells) of water for domestic use and subsistence agriculture (Djeuda et al., 1999; Mvondo et al., 2007; Fouepe et al., 2011; Teikeu et al., 2016).

2. Methodology/Procedures and Data Used

An extensive field program of borewell; data acquisition, field hydrogeological measurement/tests, water quality sampling and laboratory analysis of collected water was conducted in Yaoundé as follows:

The United States Geological Survey/National Aeronautics and Space Administration/Shuttle Radar Topography Mission's USGS/NASA SRTM Digital Elevation Model DEM 60 m data for Yaoundé in decimal degrees and datum WGS84 (SRTM, 2018). This data was projected to the UTM coordinate system and clipped to the extent of the study area. Hydrogeological traverse field mapping was carried out in February - March 2016, 600 usable wells were identified and borehole drillers' records, sandbox sketches, drill cuttings sketches, logs were acquired and converted to thirty-nine (39) lithologs for the study area using LogPlot7. Measurement of: longitudes, latitudes and elevations were carried out over the entire city. Ninety well samples were analyzed 45 samples per season; wet/dry for various sites in Yaoundé **Table 1**. Thirty-eight bore

Table 1. Codes and location of water samples for chemical analysis for major anions and cations.

Location of Samples for chemical analysis											
Location		Coordinates		Location		Coordinates		Location		Coordinates	
Name	Code	E	N	Name	Code	E	N	Name	Code	E	N
Nsam-1	1	11.6519	4.0669	Nkolmesseng-1	16	11.7908	3.9269	Madagascar-1	31	11.5878	3.8919
Ekie	2	11.5528	3.8272	Essos	17	11.5435	3.8727	Madagascar-2	32	11.5056	4.0892
Mvan	3	11.5148	3.8174	Nkolmesseng-3	18	11.7686	3.9511	Madagascar-3	33	11.6450	4.0275
Nsimeyong	4	11.4914	3.8369	Djongolo	19	11.5227	3.8844	Mballa-II	34	11.5257	3.9011
Ngoaekele	5	11.5016	3.8649	Nkolmesseng-5	20	11.7889	4.0986	Madagascar-5	35	11.6019	4.1056
Tamtam-1	6	11.5636	4.0283	Etoug-ebe-1	21	11.6950	4.0019	Mimbomann-1	36	11.6317	3.9811
Mvogmbi	7	11.5189	3.8422	Etoug-ebe-2	22	11.7164	4.0467	Mimbomann-2	37	11.7642	3.9781
Mvogada	8	11.5308	3.8624	Bastos	23	11.5122	3.8966	Ngouso	38	11.5831	3.9050
Mvogbesi	9	11.4822	3.8637	Etoug-ebe-4	24	11.5650	3.8828	Ekounou	39	11.6897	4.0139
EligEffa	10	11.5021	3.8708	Etoug-ebe-5	25	11.6936	4.0881	Nkomo 1	40	11.7897	3.9533
Simbock-1	11	11.6358	4.0172	Damas-1	26	11.5942	3.9328	Kondengui 1	41	11.6467	3.9556
Citévert	12	11.4940	3.8725	Damas-2	27	11.5175	3.8183	Kondengui 2	42	11.6789	3.9733
Briqueterie	13	11.5239	3.8851	Damas-3	28	11.5281	3.9450	Nkomo 2	43	11.7903	3.9558
Simbock-4	14	11.5069	3.9753	Oliga	29	11.4929	3.8976	Nkolndongo	44	11.7489	3.9267
Simbock-5	15	11.6181	3.9950	Damas-5	30	11.7097	3.9311	EkounouKoayos	45	11.7550	4.0089

well logs were used together with structural data to determine the aquifer setting. The field acquired data were mounted on GIS platforms to create sample location, drainage and water level contour maps **Figure 1**. The city of Yaoundé was then divided into twenty zones and each zone covered by two field workers responsible for thirty 30 out of preselected 600 wells; 550 Dug wells and 50 Bore wells.

Forty fieldworkers (Undergraduate geology students) were trained in April 2016 to use field equipment in **Table 2**, collect data, record data on data sheets and a reconnaissance survey to identify the pre-selected wells and self-introduction to private well owners for access/permissions. Four seasonal; single-day tests/measurements were carried out in June 2016 (Dry-wet season), September 2016 (Wet season), December 2016 (Wet-dry season) and March 2017 (Dry season) respectively. During each season, twenty commercial bikes (Bensikins) were hired for four hours each field day 8 am - 12 noon simultaneously in all the twenty zones. Two field workers per bike measured/tested for the following *in situ*. Wells: Surface elevation, Well water level and Well depths. Groundwater: Electrical conductivity EC, pH, Total dissolved solids TDS and Temperature °C on 445 wells; 425 hand dug wells and 20 boreholes. 125 handdug wells and 30 boreholes with incomplete data were removed from the reconnaissance selected set of 600 wells due to:

- 1) Borehole access was impossible in the course of the study by private owners being absent on fixed data collection dates or access denied after initial acceptance.
- 2) Hand dug wells got dry in one or more season(s) in the course of the study.
- 3) Inconsistent data due to field workers' errors or high laboratory result ionic balance error (>10%).

Table 2. Field Equipment, Softwares, their specifications and functions.

Equipment/Softwares	Specifications	Functions
Bike	Commercial bikes (Bensikin)	To transport fieldworkers to wells
GPS	GARMIN GPSMAP 60CSx	To measure longitude, latitude and elevation of wells
EC Meter	HANNA HI 98304/HI98303	To measure Electrical Conductivity of water.
pH Meter	HANNA HI 98127/HI98107	To measure pH of water.
Water level indicator	Solinst Model 102M	To indicate static water levels of water in wells
Measuring Tape	Weighted measuring tape	Measurement of well diameter and depth.
Digital Thermometer	Extech 39240 (-50°C to 200°C)	To measure temperature of water
TD S meter	Hanna HI 96301 with ATC	To measure Total dissolved solids in water
Water sampler	Gallenkampf 1000 ml	To collect well water sample from well
Sample bottles	Polystyrene 1000 ml	To hold sample for onward transmission to laboratory
ArcGIS	Version 10.1	GIS Drawing sampling/Tests location maps
Global Mapper	Version 11	GIS Geolocation of wells
Surfer Golden Software	Version 12	GIS plotting contours for spatial distribution
AqQA/Aquachem	Version 15	For the analysis/interpretation of water chemistry results
Rockworks	Version 16	For the analysis/interpretation of water chemistry results
Logplot	Version 7	For production of lithologs from borehole logs/data

8900 groundwater physico-chemical field tests; 445 wells *5*4 seasons for EC, pH, TDS, Temperature, Depth to water carried out during these four seasons. Ninety groundwater samples were collected. Two selected wells per zone were sampled for two seasons; wet and dry; one out of every fifteen tested wells. Two samples for chemical analysis were collected at each site. One sample was filtered using Sartorius polycarbonate filtering apparatus and a 0.45 µm cellulose acetate filter membrane, acidified with Merck ultra-pure nitric acid to pH < 2 *in situ* in sample-rinsed high density linear polyethylene (HPDE) 50 ml bottles. The other sample was unfiltered into 50 ml bottles with sealed lids as per sampling protocols (ISO 5667-3 2003; ISO 5667-1 2006; ISO 5667-11 2009; Barcelona et al., 1985). All the collected pre-labeled sample-water-rinsed bottles were sent to Actlabs Canada to analyze for (APHA, 1995):

- 1) Major cations in mg/L: Ca²⁺, Mg²⁺, Na⁺, K⁺ and NH₄⁺.
- 2) Major anions in mg/L: HCO₃⁻, Cl⁻, SO₄²⁻, HPO₄²⁻ and NO₃⁻.
- 3) Trace elements; results not evaluated here.

For a better understanding of the rock-water interactions, evolution of the hydrogeochemistry, water quality evaluation for human consumption, comparing the water types and interpretation of seasonal variations in hydrochemical processes and suitability for agro-industrial use; Durov's diagram, Piper's diagram, Gibbs diagram, USSL ratio, Sodium Absorption ratio SAR, Percent sodium %Na, Kelly Ratio KR, Magnesium Absorption Ratio MAR, Total Hardness TH, Residual Sodium Carbonate RSC, Permeability Index PI and the field physico-chemical and laboratory analysis data were mounted unto various software platforms **Table 3** to get indices/parameters and figures for interpretation.

Table 3. Formulae for the determination for indices/parameters for water quality assessment.

Indices	Formula	Reference
Percentage Sodium, Na%	$\%Na = \frac{Na^+ + K^+}{Na^+ + K^+ + Ca^{2+} + Mg^{2+}} \times 100$	Wilcox (1955)
Kelly Ratio, KR	$KR = \frac{Na^+}{Ca^{2+} + Mg^{2+}}$	Kelley (1940)
Magnesium Absorption Ratio, MAR	$MAR = \left(\frac{Mg^{2+}}{Mg^{2+} + Ca^{2+}} \right) \cdot 100$	Szabolcs & Barab (1964)
Total Hardness, HT	TH (CaCO ₃) mg/L = 2.5 Ca ²⁺ + 4.1 Mg ²⁺	Todd (1980)
Residual Sodium Carbonate, RSC	$RSC = (CO_3 + HCO_3 - (Ca + Mg))$	Eaton (1950) and Raghunath (1987)
Sodium Absorption Ratio, SAR	$SAR = \frac{Na}{\sqrt{\frac{Ca + Mg}{2}}}$	Richards (1954)
Permeability Index, PI	$PI = \frac{((Na + K) + \sqrt{HCO_3}) * 100}{Ca + Mg + Na + K}$	Doneen (1962)
Water Quality Index, WQI	$WQI = \sum_{i=1}^n W_i q_i \left[\sum_{i=1}^n W_i \right]^{-1}$	Sisodia & Moundiotiya (2006)

3. Results and Discussion

3.1. Aquifer Setting and Flow Patterns

3.1.1. Aquiferous Lithologies in Yaoundé

The aquiferous formations in Yaoundé are made up from top to bottom,; top soil 0.50 - 9.00 m, clayey Sand 1.00 - 25.00 m, Silty mottled clay containing preserved fractures 10.00 - 42.10 m, Ferralitic Laterite 1.60 - 37.30 m, fractured weathered gneiss and unweathered fractured gneiss and migmatites of the Yaoundé series 1.50 - 38.00 m in thickness, up to a total depth of 84 m **Figure 2**.

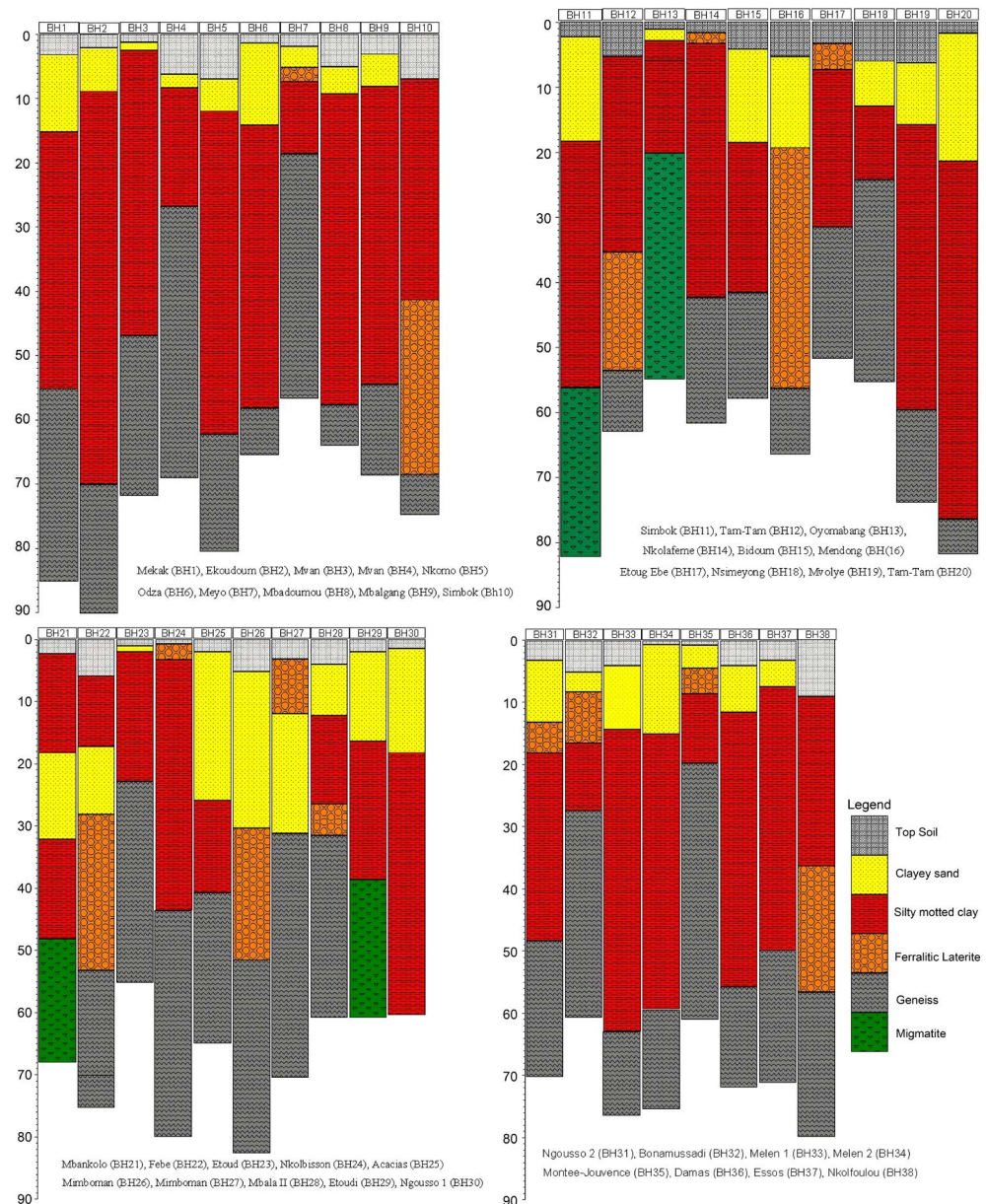


Figure 2. Borehole lithostratigraphic logs, Yaoundé: (a) Borehole 1 - 10, Borehole 11 - 20, (c) Borehole 21 - 30 and (d) Borehole 31 - 38. Lithology thickness ranges between: Top soil 0.50 - 9.00 m, Clayey Sand 1.00 - 25.00 m, Silty mottled clay 10.00 - 42.10, Ferralitic Laterite 1.60 - 37.30 m and Gneiss 1.50 - 38.00.

Fractured basement and weathered layers of crystalline rocks form two major types of aquifers important for water supply in hard rock areas. These weathering profiles generally develop under both stable geodynamic conditions where weathering rate far exceeds erosion rate with important amounts of precipitation and high temperatures (Wyns et al., 2004).

3.1.2. Digital Elevation Model

Yaoundé has an undulating relief of hills and valleys. The land surface is covered by top soil in most areas though there are some areas where gneisses outcrop on hill tops and valleys **Figure 3**. Tectonic structures are hardly visible but for some joints and fissures.

3.1.3. Subsurface Structural Fissures

Subsurface structural fissures in the study area are mostly fissures and fractures **Figure 4**. These structures are covered by weathered regolith and saprolite making their mapping by traditional geological field methods difficult. They are mostly revealed through GIS Remote sensing and geostatistical analysis (Teikeu et al. 2016). They reveal local (red), intermediate (green) and regional (blue) scaled fissure host to groundwater.

3.1.4. Water Level Fluctuations and Well Depths

1) Depth-to-water values (m) of groundwater in wells in Yaoundé range from: 0.40 - 22.30 in the Wet season; 0.64 - 22.42 in the Wet/dry season; 1.31 - 21.56 in the Dry season to 1.95 - 23.30 in the Dry/wet season **Figure 5**.

2) Borewells have depths of 17 m - 83 m while Dugwells range in depth from 80 cm at the valleys to 19 m at higher altitudes. Most shallow dugwells < 5 m at elevations above 660 m dried up completely in the Dry/wet season 4.

3) Surface elevation and Groundwater contours

The surface elevation and groundwater contours are mostly concentric around the hills and are a direct replica of surface morphology **Figure 6**. This indicates

Elevation 3D Surface model, Yaounde

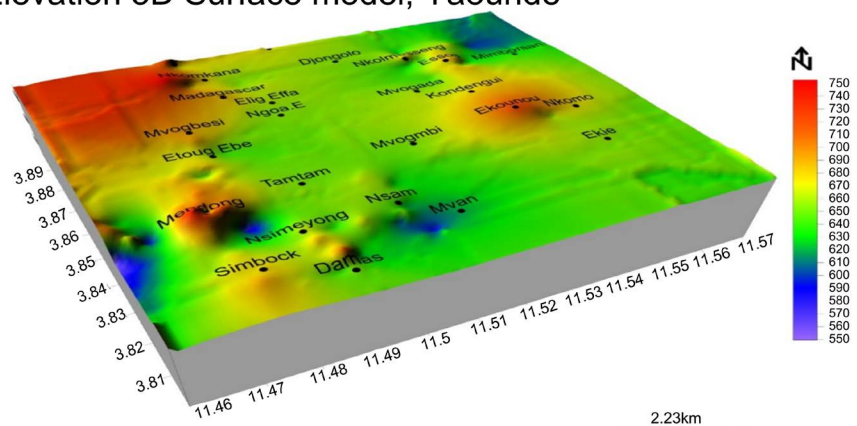


Figure 3. Digital Elevation Model DEM of Yaoundé with an undulating relief of hills and valleys.

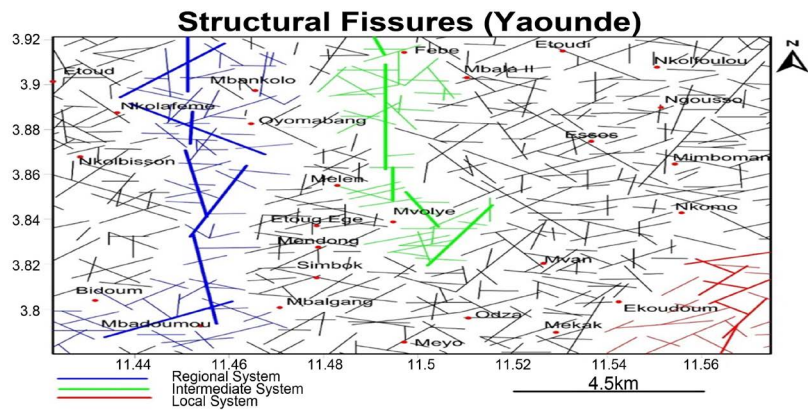


Figure 4. GIS Remotely sensed subsurface structural fissures in study area: The local (red) around Ekoudoum; intermediate (green) running from Mont Febe to Mvolye and regional scaled fissures (blue) from Mbankolo to Mbadoumou, host to groundwater (Extracted from Teikeu et al. 2016).

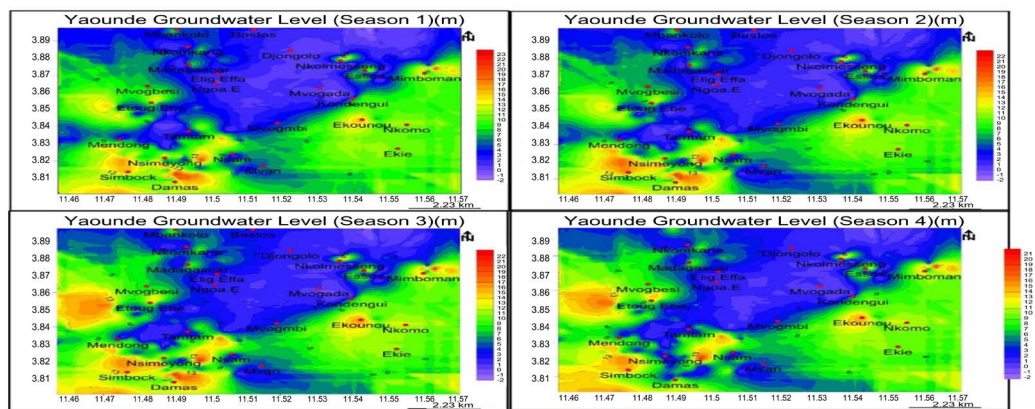


Figure 5. Depth-to-water level of wells in Yaoundé during four hydrogeological seasons; the deepest water levels in red, occur at Etoug-Ebe, Simbok, Damas and Mimboman in the dry season while the shallow water levels are during the wet season 1.

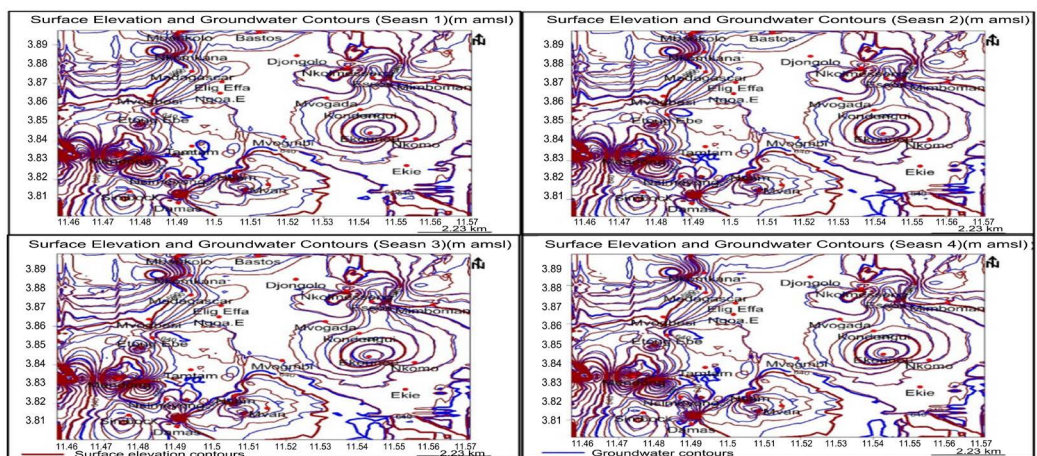


Figure 6. Surface elevation and groundwater contours; the similarity in the shape of both contours for all seasons indicate the water level contours are in rhythm with the surface topography for all seasons indicative of a single phreatic aquifer. Both contours are concentric around hills indicating topography controlled piston flow.

the groundwater levels are similar to surface elevation in profile typical of phreatic aquifers.

3.2. Hydrogeochemistry

3.2.1. Seasonal Variations in Physicochemical Parameters of Groundwater in Yaoundé

1) pH values of Yaoundé groundwater range from: 4.0 - 8.8 in the Wet season to 2.6 - 12.0 in the Dry/wet season **Figure 7**. The pH values vary with season indicating seasonal control. Some dugwells have anomalously low pH possibly due to anthropogenic pollution from runoff leachates from dumpsites during the wet season and high values due to intense photosynthetic activity by algae which were visible in almost dry shallow wells in the Dry/wet season. In waters with low dissolved solids as found in Yaoundé, which consequently have a low buffering capacity i.e. low internal resistance to pH change. Changes in pH induced by external causes may be quite dramatic from point to point and from season to season. Extremes of pH can affect the palatability of water but the corrosive effect on distribution systems is a more urgent problem.

2) Total Dissolved Solids (TDS) (mg/L) values of Yaoundé groundwater range from: 4 - 650 in the wet to 0.01 - 800 in the dry season **Figure 8**. The TDS vary with season indicating seasonal control.

3) Temperature T °C values of Yaoundé groundwater range from: 21.0 - 27.5 in the wet season to 19.5 - 27.5 in the dry season **Figure 9**. The temperatures vary with season indicating seasonal control.

4) Electrical conductivity EC $\mu\text{S}/\text{cm}$ values of Yaoundé groundwater range from 10 - 1300 in the wet season, 90 - 1690 in the dry/wet season **Figure 10**. The EC varied with season indicating seasonal influence. The residual salinity hazard RSH for the four seasons **Table 4**. The S_1C_0 , S_1C_1 , and S_1C_2 make up the excellent, very good and good Classes respectively. For the Wet season 430 samples,

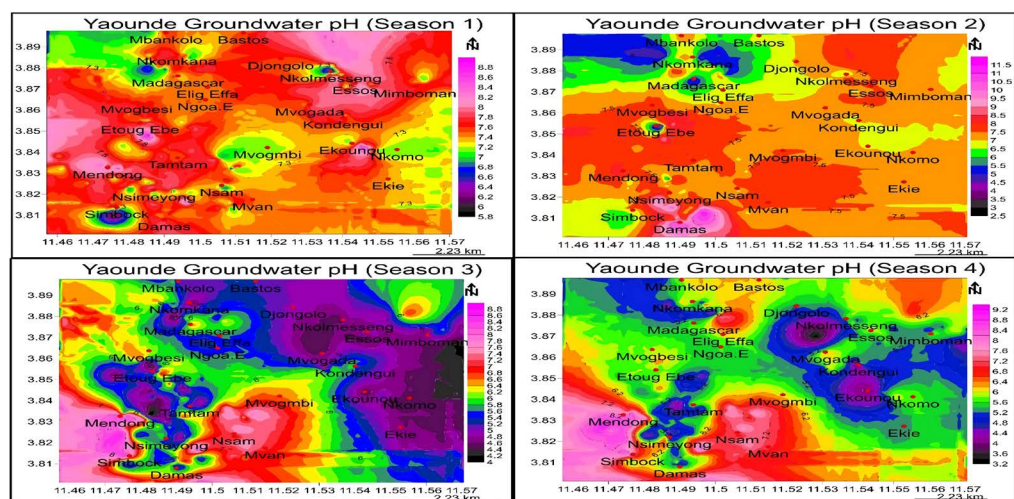


Figure 7. Yaoundé groundwater pH values for four seasons; groundwater is alkaline in the rainy season; alkaline to slightly acidic in the wet/dry season; acidic in the dry season and acidic to slightly alkaline in the dry/wet season.

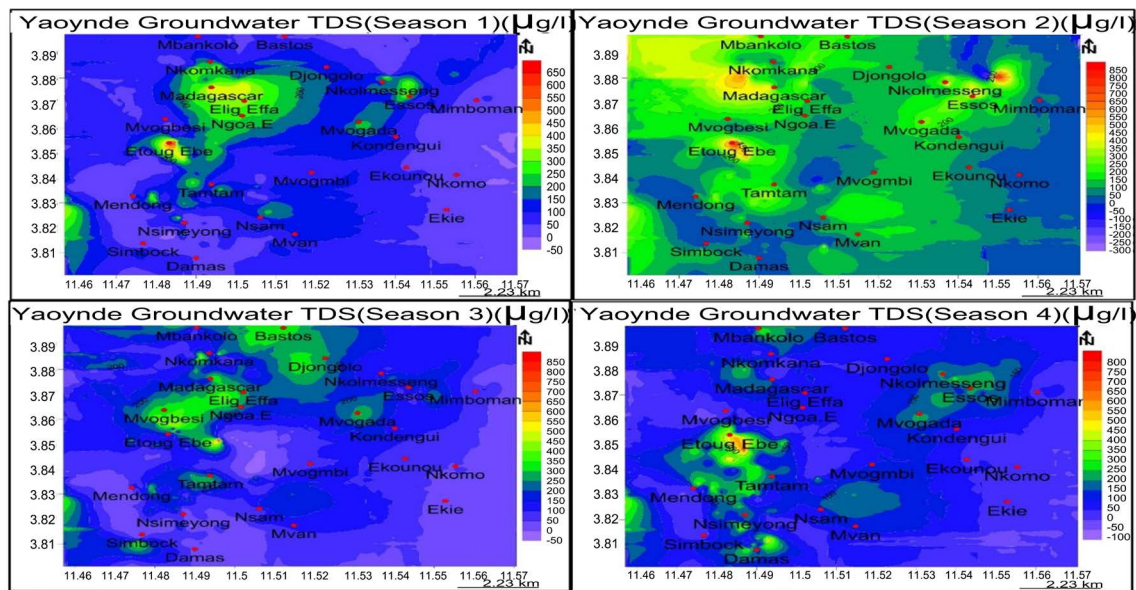


Figure 8. Yaoundé groundwater TDS values for four seasons; groundwater is fresh < 650 in the rainy season; fresh < 850 in the wet/dry season; fresh < 850 in the dry season and fresh < 800 in the dry/wet season.

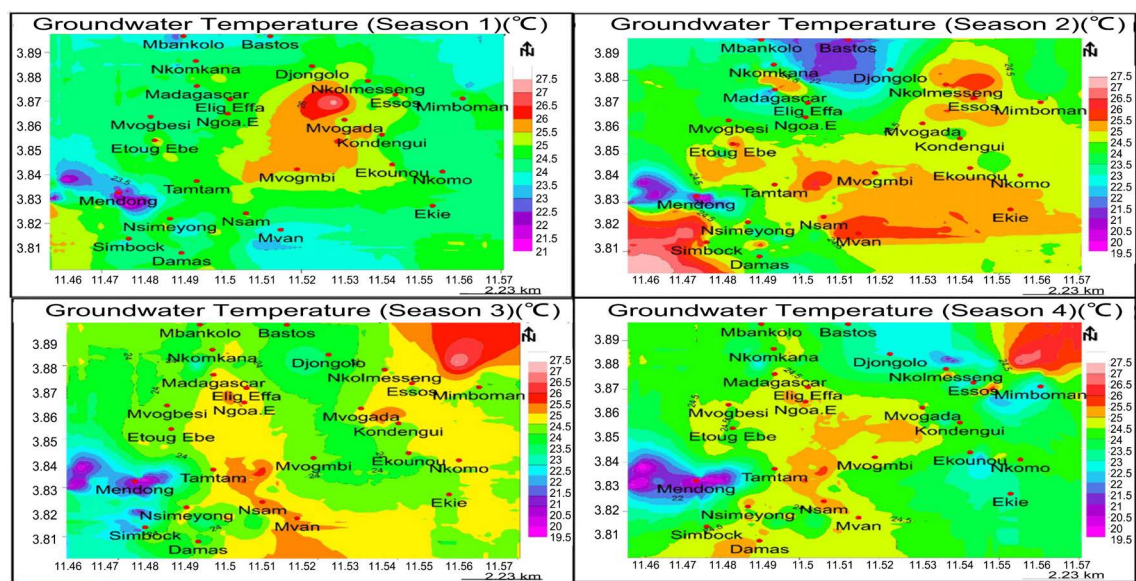


Figure 9. Yaoundé groundwater temperature °C values for four seasons; 21.0 - 27.5 in the rainy season; 19.5 - 27.5 in the wet/dry season; 19.0 - 27.5 in the dry season and 19.5 - 27.5 in the dry/wet season.

96.7%; Wet/dry 424 samples, 95.3%; Dry season 433 samples 97.3% and Dry/wet season 431 samples, 96.9% are thus considered as good for residual salinity hazard based on the electrical conductivity **Figure 10** (**Figure 11**).

3.2.2. Groundwater Content of Major Ions mg/L Table 5

The occurrence of ions in groundwater in Yaoundé in decreasing order of magnitude: for cations; $Ca^{2+} > K^+ > Mg^{2+} > Na^+ > NH_4^+$ and anions; $HCO_3^- > Cl^- > SO_4^{2-} > NO_3^- > HPO_4^{2-}$. The evaluation of ions is based on recommended guideline values (WHO, 2017) (**Table 6**).

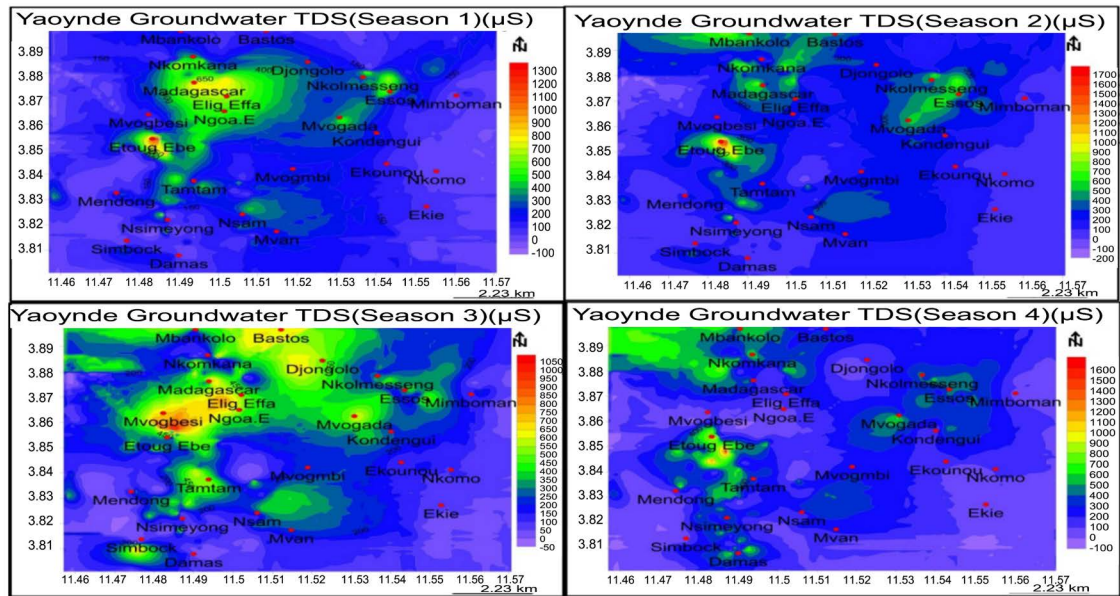


Figure 10. Yaoundé groundwater Electrical Conductivity EC values $\mu\text{S}/\text{cm}$ for four seasons range from: 10 - 1300 in the wet season; 20 - 1700 in the Wet/Dry season; 50 - 1050 in the dry season to 90 - 1600 in the dry/wet season.

Table 4. Summary statistics of physico-chemical groundwater parameters of 445 wells measured *in situ* during four hydrogeological seasons (Wet, Wet/Dry, Dry, and Dry/wet), Yaoundé.

Parameter	Wet			Wetdry			Dry			Drywet		
	Min	Max	Av	Min	Max	Av	Min	Max	Av	Min	Max	Av
Depth to water (m)	0.40	22.30	1.22	0.64	22.42	1.86	1.31	21.56	2.41	1.95	23.30	4.22
pH	4.0	8.8	7.8	3.4	9.0	7.5	6.2	9.0	6.0	2.6	12	5.6
Electrical conductivity ($\mu\text{S}/\text{cm}$)	10	1300	246	20	1700	348	50	1050	452	90	1690	276
Temperature ($^{\circ}\text{C}$)	19.0	27.5	24.8	19.0	27.5	25.3	21.0	28.0	23.6	19.5	27.5	25.0
Total dissolved solids (mg/l)	0.0	850	186	0.0	800.0	200	0.0	650.0	250	0.0	850.0	150

Table 5. Water quality Classification based on EC of Yaoundé groundwater.

Hazard Class	EC $\mu\text{S}/\text{cm}$	Quality	Season1		Season2		Season3		Season4	
			No	%	No	%	No	%	No	%
C0	0 - 100	Excellent	141	31.7	118	26.5	112	25.2	112	25.2
C1	101 - 250	Very Good	149	33.5	145	32.6	156	35.1	154	34.6
C2	251 - 750	Good	140	31.5	161	36.2	165	37.0	165	37.1
C3	751 - 2250	Doubtful	15	3.4	21	4.7	11	2.5	13	29.2
C4	>2250	Unsuitable	0	0	0	0	1	0.2	1	0.2

1) **Sodium ionic concentration** values of Yaoundé groundwater range from: 0.05 - 3.31 in Wet season to 0.05 - 3.42 in the Dry season. Sodium regulates blood pressure levels in the human body and increased levels of sodium in blood leads to rise in blood pressure.

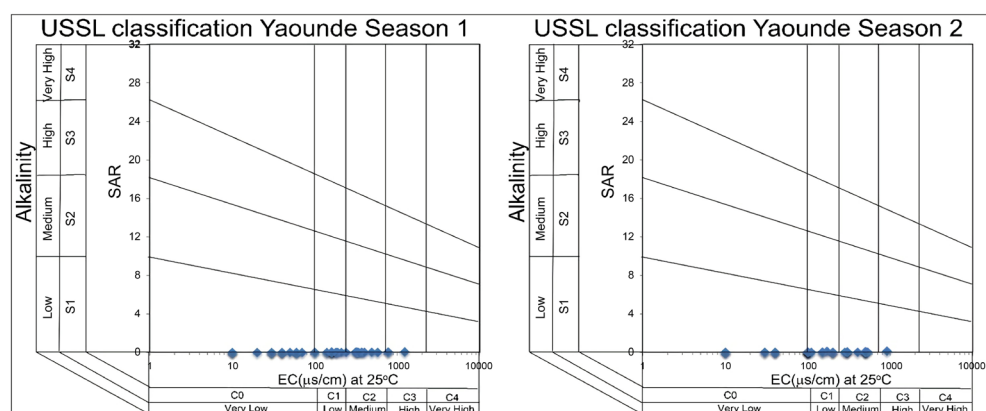


Figure 11. Residual Salinity Hazard Classification, Yaoundé; The samples fall in the S_1C_0 , S_1C_1 , and S_1C_2 which are; excellent, very good and good Classes respectively. For the Wet season 430 samples, 96.7%; Wet/dry 424 samples, 95.3%; Dry season 433 samples, 97.3% and Dry/wet season 431 samples, 96.9% are thus considered as good for residual salinity hazard based on the electrical conductivity.

Table 6. Summary of chemical analysis of groundwater analysis of 90 well: 45 wells each season; dry/wet, Yaoundé.

Ions	Wet Season		Dry season	
	min	Max	min	max
Na ⁺	0.05	3.31	0.05	3.42
K ⁺	0.55	41.69	0.38	32.02
Ca ²⁺	4.24	112.8	1.38	74.45
Mg ²⁺	1.01	32.9	0	14.16
NH ₄ ⁺	0.01	0.16	0	30.05
HCO ₃ ⁻	2.44	368.76	4.88	287.45
NO ₃ ⁻	0	4.32	0.07	64.86
SO ₄ ²⁻	0.57	14.37	0.36	25.94
Cl ⁻	1	184	0.32	89.2
HPO ₄ ²⁻	0	0.19	0	0
Hardness	1.74	18.21	0.34	11.02

2) Potassium ionic concentration values of Yaoundé groundwater range from: 0.55 - 41.69 in the Wet season to 0.38 - 32.02 in the Dry season. Potassium Controls body balance and maintains normal growth of the human body. Deficiency of potassium might lead to weakness of muscles and rise in blood pressure. No standard limits have been provided by the WHO Standards for level of sodium and potassium in drinking water.

3) Calcium ionic concentration ranges from Wet season 4.24 - 112.8 and Dry season 1.38 - 74.45. Acceptable limit of calcium in drinking water is 75 mg/L. 200 mg/L in case of no other alternative source. Calcium ion is necessary for proper mineralization of bones and bone strength. Deficiency in intake of calcium leads to eventual demineralization of bones for complementing the inade-

quate amounts of calcium in the body.

4) Magnesium ionic concentrations of Yaoundé groundwater range from: 1.01 - 32.9 in the Wet season and 0 - 14.16 in the Dry season. Magnesium Acceptable limit in drinking water is 30 mg/L (100 mg/L in case of no other alternative source). Magnesium helps in maintaining normal nerve and muscle function, a healthy immune system and helps bones remain strong. It also helps in regulation of regulate blood glucose levels and aid in the production of energy and protein. Deficiency of magnesium in the human diet might lead to anxiety, fatigue or anorexia.

5) Ammonium NH_4^+ ionic concentrations of Yaoundé groundwater range from: 1.01 - 32.9 in the Wet season and 0 - 14.16 in the Dry season. These values are above allowable limits in some areas in both the wet and dry seasons. Ammonium is generally present in natural waters, though in very small amounts, as a result of microbiological activity which causes the reduction of nitrogen-containing compounds. When present in levels above 0.1 mg/L N, sewage or industrial contamination may be indicated. From the viewpoint of human health the significance of ammonium is marked because it indicates the possibility of sewage pollution and the consequent possible presence of pathogenic micro-organisms.

6) Bicarbonate HCO_3^- ionic concentrations of Yaoundé groundwater range from: 2.44 - 368.76 in the Wet season and 4.88 - 287.45 in the Dry season. No standard limits have been provided by the WHO Standards for level of carbonate and bicarbonate in drinking water.

7) Chloride Cl^- ionic concentrations of Yaoundé groundwater range from: 1 - 184 in the Wet season and 0.32 - 89.2 in the Dry season. Acceptable limit of chloride in drinking water is 250 mg/L (1000 mg/L in case of no other alternative source) (WHO, 2017). Large amounts of chloride ions leads to bad taste in groundwater. Increase in chloride levels in our body might lead to increase in blood pressure levels and rise in body fluids.

8) Sulphate SO_4^{2-} ionic concentrations of Yaoundé groundwater range from: 0.57 - 14.37 in the Wet season and 0.36 - 25.94 in the Dry season. The sulphate ion causes no particular harmful effects on soils or plants; however, it contributes in increasing the salinity in the soil solution. Acceptable limit of sulphate in drinking water is 200 mg/L. Excess sulphate consumption through water might lead to occurrence of diarrhoea in humans.

9) Phosphate HPO_4^{2-} ionic concentrations of Yaoundé groundwater range from: 0 - 0.19 in the Wet season and 0 in the Dry season. The mean phosphate levels in all seasons for groundwater samples in Yaoundé are below the recommended maximum contaminant level. 1.0 mg/L for drinking water.

10) Nitrate NO_3^- ionic concentrations of Yaoundé groundwater range from: 0 - 4.32 in the Wet season and 0.07 - 64.86 in the Dry season. For the dry seasons the values are above the recommended value of 50 mg/L hazardous to infants. Soil/rock-water interactions can result to weathering and enrichment of the groundwater with ammonium ions, since groundwater quality is a function of the chemical composition of the soil/rock through which it passes. However rel-

atively little of the nitrate found in natural waters is of mineral origin; most coming from organic and inorganic sources, the former including waste discharges and the latter comprising chiefly oxidation of ammonia from artificial agricultural fertilizer run-off. However, bacterial oxidation and fixing of nitrogen by plants can both produce nitrates. Interest is centered on nitrate concentrations for various reasons. Most importantly, high nitrate levels in waters to be used for drinking will render them hazardous to infants as they induce the “blue baby” syndrome (methaemoglobinaemia). The nitrate itself is not a direct toxicant but is a health hazard because of its conversion to nitrite which reacts with blood hemoglobin to cause methaemoglobinaemia.

The Ca, Mg, Na, K, HCO₃, Cl and SO₄ ionic concentrations show considerable seasonal variations. This is similar to results in the basement complex in Uganda imputing the variations to geology, climatic and hydrologic conditions (Nyende et al., 2014).

3.2.3. Rock-Groundwater Interaction in Yaoundé

To have an insight into the interaction between rock matrix and the groundwater in Yaoundé, a Gibb’s diagram was used (Gibbs, 1970). Rock/mineral weathering, reverse/inverse ion-exchange, dissociation, and anthropogenic inputs are major solute acquisition mechanisms for the acquisition of major ions content in groundwater with respect to; atmospheric-precipitation, rock-weathering and evaporation-crystallization. This gives the controlling geochemical processes for the groundwater in Yaoundé.

Gibbs plot for Yaoundé **Figure 12** and **Table 7** indicate that: During the rainy season, for cations; 37 samples 82.2% are of rock-weathering dominance while 8 samples 17.8%, are of atmospheric precipitation dominance. For anions; 33 samples 73.3% are of rock weathering dominance and 12 samples 26.7% are of the atmospheric precipitation dominance.

Table 7. Wet and Dry seasonal variations in rock/groundwater interaction from Gibbs diagram, Yaoundé.

Gibbs Yaoundé Ions	Wet season		Dry season	
	samples	%	Samples	%
Cations				
Atmospheric precipitation dominance	7	16	8	18
Rock-weathering dominance	38	84	37	82
Anions				
Atmospheric precipitation dominance	9	20	11	25
Rock-weathering dominance	36	80	34	75
Cation + Anion				
Atmospheric precipitation dominance	16	17.8	19	21
Rock-weathering dominance	74	82.2	63	79

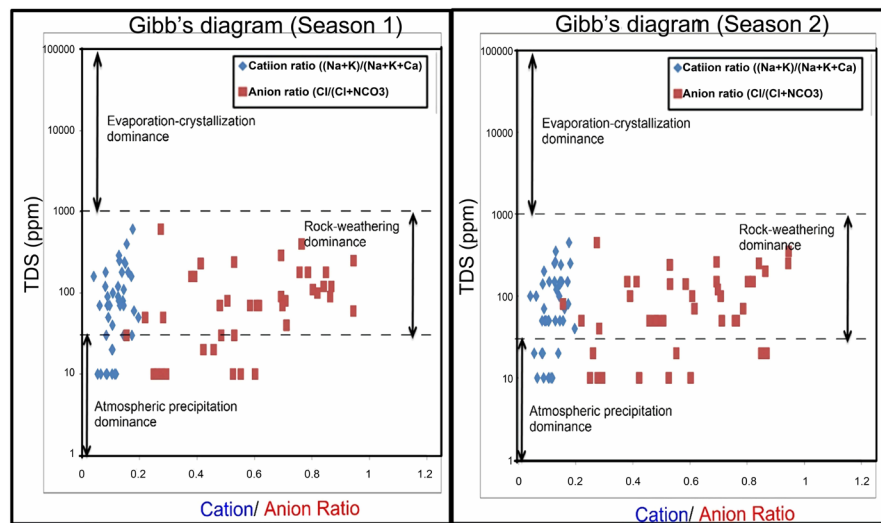


Figure 12. Plot of ionic ratio vs. TDS Yaoundé: Rainy season cations; 38 samples, 84% Rock-weathering dominance and 7 samples 16% Atmospheric precipitation dominance. Dry season cations; 37 samples, 82% Rock-weathering dominance and 8 samples, 18% are of Atmospheric precipitation dominance. Rainy season anions; 36 samples, 80% are of Rock-weathering dominance and 9 samples, 20% Atmospheric precipitation dominance. Dry season anions; 34 samples, 75% are of Rock-weathering dominance and 11 samples, 25% Atmospheric precipitation dominance (Gibbs, 1970).

During the dry season, for cations; 67 ions, 34 samples 73.3% rock weathering dominance and 23 ions 11 samples, 26.7% evaporation-crystallization dominance. For anions, 33 samples 73.3% are of rock weathering dominance and 12 samples 26.7% are of the atmospheric precipitation dominance.

Considering cations + anions, in the rainy season 70 ions, 35 samples 77.8% of the samples fall in the rock weathering dominance and while 20 ions, 10 samples 22.2% fall under atmospheric precipitation dominance. No sample fell under evaporation-crystallization dominance in both seasons. This reveals that, the weathering of the aquifer matrix is the primary dominant process in the acquisition of ions while atmospheric precipitation is the secondary process controlling the hydrogeochemistry in Yaoundé.

3.2.4. Hydrogeochemical Character of Yaoundé Groundwater

Durov diagram is a composite plot consisting of two ternary diagrams where the milliequivalent percentages of cations are plotted perpendicularly against those of anions (Durov, 1948); the sides of the triangles form a central rectangular binary plot of total cation vs. total anion concentrations. These are divided into nine Classes which give the hydrogeochemical processes determining the character of the water types in the aquiferous formation (Lloyd & Heathcoat, 1985). Based on this Classification Table 8; three Classes occur in the rainy season; *Class 1 recharging waters*: 8 samples, 15.6%; *Class 2 ion exchange water*: 10 samples, 22.2%; *Class 3 ion exchange water*: 28 samples, 62.2% respectively. Six Classes occur in the dry season: *Class 1 recharging waters*: 19 samples, 42.2%; *Class 2 ion exchange water*: 11 samples, 24.4%; *Class 3 ion exchange water*: 11

Table 8. Hydrogeochemical processes in groundwater using Durov's Diagram, Yaoundé (Lloyd and Heathcoat, 1985).

SN	Durov's Diagram Yaoundé Water type and hydrogeochemical process	No.		%	
		Wet	Dry	Wet	Dry
1	HCO ₃ ⁻ and Ca ⁺ dominant, <i>indicates recharging waters</i> in migmatites and gneiss.	8	19	15.6	42.2
2	This water type is dominated by Ca ⁺ and HCO ₃ ⁻ ions. Association with dolomite is presumed if Mg ⁺ is significant. However, those samples in which Na ⁺ is significant, an important <i>ion exchange</i> is presumed	10	11	22.2	24.4
3	HCO ₃ ⁻ and Na ⁺ are dominant, normally indicates <i>ion exchanged water</i> , although the generation of CO ₂ at depth can produce HCO ₃ ⁻ where Na ⁺ is dominant under certain circumstances	28	11	62.2	24.4
4	SO ₄ ²⁻ dominates, or anion discriminant and Ca ⁺ dominant, Ca ⁺ and SO ₄ ²⁻ dominant, frequently indicates recharge water in lava and gypsiferous deposits, otherwise mixed water or water exhibiting <i>simple dissolution</i> may be indicated.	0	2	0	4.4
5	No dominant anion or cation, indicates water exhibiting <i>simple dissolution or mixing</i>	0	1	0	2.2
6	SO ₄ ²⁻ dominant or anion discriminate and Na ⁺ dominant; This water type is not frequently encountered and indicates <i>probable mixing or uncommon dissolution</i> influences.	0	1	0	2.2

samples, 24.4%; *Class 4* simple dissolution: 2 samples, 4.4%; *Class 5* simple dissolution or mixing: 1 sample, 2.2%; *Class 6* probable mixing or uncommon dissolution influences: 1 sample, 2.2% respectively. There are no *Classes 5 - 9* in the rainy season and no *Classes 7 - 9* in the dry season samples in groundwater from Yaoundé **Figure 13**. In the rainy season, fresh recently recharging water exchanges ions with the matrix of the formation, while simple dissolution or mixing also goes on between the recently recharging and the existing groundwater in the formation. In the dry season, recharging groundwater having spent more time in the formation continues to exchange ions to a lesser extent with the matrix of the formation while increasingly; simple dissolution or mixing also goes on between the recently recharging groundwater and the pre-existing groundwater in the formation, piston flow. The absence of samples showing Na⁺ and Cl⁻ as dominant cation/anion, no *Classes 5 - 9* in the rainy season and no *Classes 7 - 9* in the dry season, indicates that the groundwater in Yaoundé is not related to reverse or inverse ion exchange of NaCl waters or any end-point down gradient waters.

3.2.5. Groundwater Types Occurring in Yaoundé

In saturated formations; aquifers, groundwater occurs in varied chemical modes associated ionic complexes that differ in their chemical composition as a function of; lithology, ionic content, solution kinetics and flow patterns called hydrogeochemical facies (Todd, 1980). Hydrogeochemical facies, water types and the geochemical evolution of the ionic content of groundwater is elucidated by plotting water sample's laboratory analysis results on Piper's trilinear diagram (Piper, 1944). In **Figure 14**, the cation-field has; Calcium-rich waters; 34 samples, 75.6% in the rainy and 22 samples, 48.8% in the dry season. Magnesium-rich waters: 11 samples, 24.4% in the rainy and 23 samples, 51.1% in the dry seasons. Bicarbonate-rich waters: 35 samples, 77.8% and 17 samples, 37.8% in the rainy

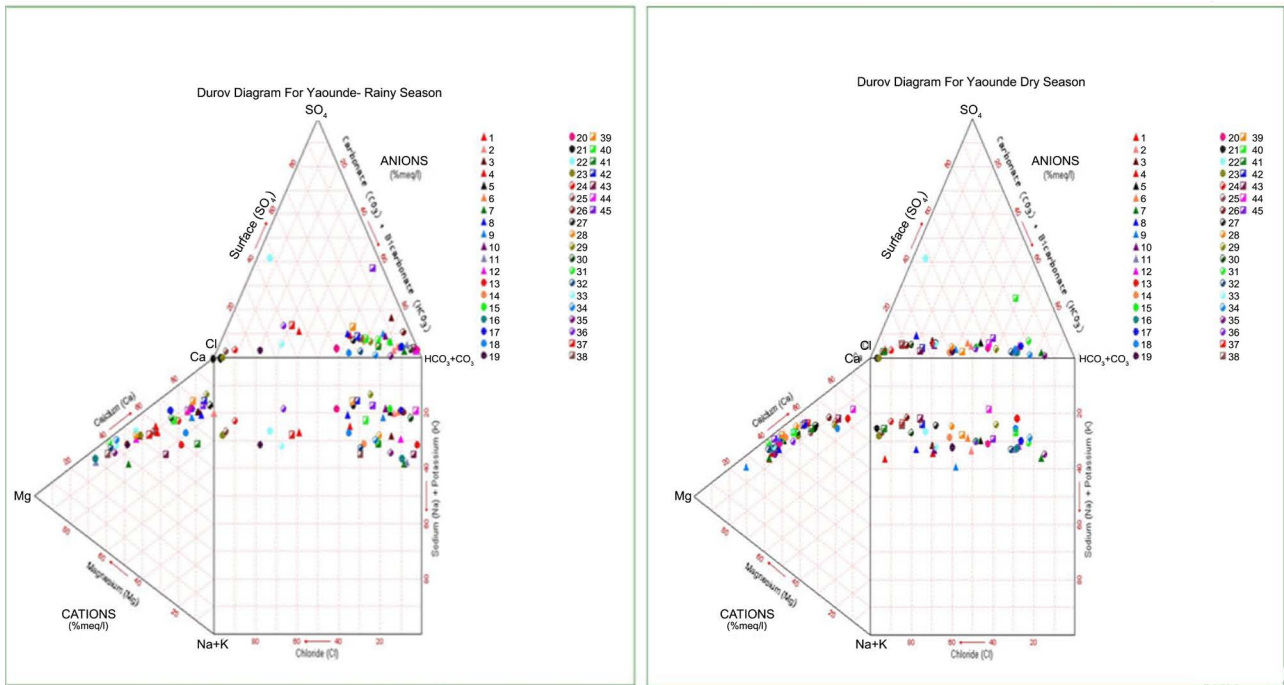


Figure 13. Durov plot of Yaoundé groundwater for the processes in groundwater evolution; for rainy season; recharge, 8 samples, 17.78%; ion exchange, 37 samples, 82.22% while in the dry season; recharge, 19 samples, 42.2%; ion exchange, 22 samples, 48.8%; simple dissolution or mixing, 4 samples, 8.8% (Durov, 1948; Lloyd & Heathcoat, 1985).

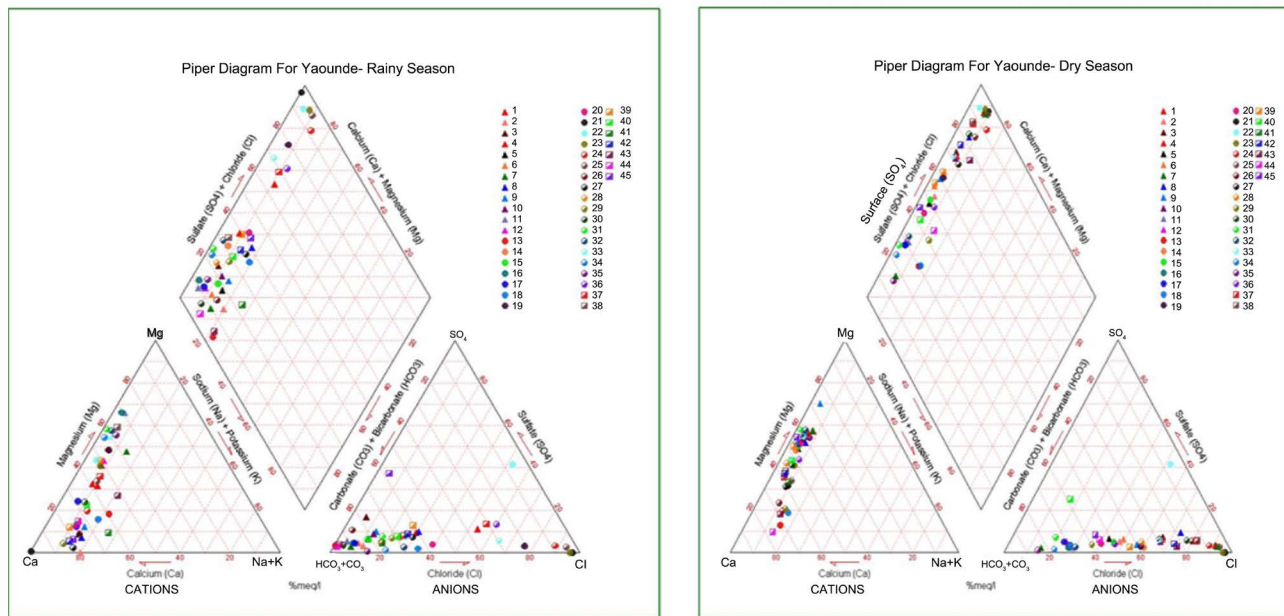


Figure 14. Piper’s diagram for Yaoundé groundwater; Diamond field (I): Ca-Mg-Cl-SO₄ hydrogeochemical facies has 10 samples, 22.2% in the rainy and 16 samples, 35.6% in the dry season. Field (IV), Ca-Mg-HCO₃ hydrogeochemical facies has 35 samples, 77.8% in the rainy and 29 samples, 64.4% in the dry season. No samples plotted on field II and field III (Langguth, 1996).

season. Chloride-rich water: 10 samples 22.2% in the rainy and 28 samples, 62.2% in dry season. The dominance of Calcium bicarbonate and Magnesium bicarbonate waters types in both seasons indicate freshly recharged groundwater

that has not moved a long distance from its source (Hounslow, 1995).

3.2.6. Hydrogeochemical Facies and Water Types Occurring in Yaoundé

1) Piper's Hydrogeochemical facies

From the Piper's diagram, Field (I): Ca-Mg-Cl-SO₄ hydrogeochemical facies has 10 samples, 22.2% in the rainy and 16 samples, 35.6% in the dry season. This facies is characteristic of stagnant groundwater zones or of groundwater at some distance along its flow path (Eelco 2014). Field (IV), Ca-Mg-HCO₃ hydrogeochemical facies has 35 samples, 77.8% in the rainy and 29 samples, 64.4% in the dry season. This facies is characteristic of freshly recharged groundwater that has equilibrated with CO₂ and soluble carbonate minerals under an open system conditions in the vadose zone typical of shallow groundwater flow systems in crystalline phreatic aquifers.

No samples plotted on Field II and Field III. The high contribution of alkaline earth elements 77.8% in the rainy season and 64.4% in the dry season may be due to direct ion-exchange processes which enrich groundwater with alkaline earth elements. The dominance of Ca-Mg-HCO₃ hydrogeochemical facies in this area could be due to dissolution of gases and minerals, particularly CO₂ and CO₂-related compounds from the atmosphere dissolved in precipitation and during groundwater infiltration through the vadose zone.

2) Piper-Langguth groundwater types

The diamond field of piper diagram has further been divided into seven fields Classifying water types and designated with alphabets from A to G (Langguth, 1996). Using this Classification, the water from the study area is distinguished into the A, B, and C categories (Table 9). The D, E, F, and G water types are absent. In the rainy season; Category A, 32 samples, 64.4%; characterized by normal

Table 9. Seasonal variations in groundwater types from Piper's trilinear diagram, Yaoundé (Langguth, 1996).

SI	Yaoundé Durov's Water type	samples		%	
		Wet	Dry	Wet	Dry
Diamond Field					
A	Normal earth alkaline water; prevailing HCO ₃ ⁻	29	10	64.4	22.2
B	Normal earth alkaline water; prevailing HCO ₃ ⁻ , SO ₄ ²⁻ or Cl ⁻	2	12	4.4	26.7
C	Normal earth alkaline water; prevailing SO ₄ ²⁻ or Cl ⁻	10	23	22.2	51.1
D	Earth alkaline water; increased portions of alkalis; prevailing HCO ₃ ⁻	4	0	8.9	0
Cation Field					
1	Ca-rich waters	33	19	73.3	42.2
2	Mg-rich waters	12	26	26.7	57.8
Anion Field					
4	HCO ₃ ⁻ waters	37	17	82.2	37.8
6	Cl ⁻ waters	8	28	17.8	62.2

earth alkaline water with prevailing bicarbonate. Category B; 3 samples, 4.4% are characterized by normal earth alkaline water with prevailing sulfate or chloride and Category C; 10 samples, 22.2% are characterized by alkaline earth water with increased portions of alkalis with prevailing bicarbonate. In the dry season: Category A; 11 samples, 22.2%; Category B, 11 samples, 22.2% and Category C; 23 samples, 51.1%. The dominant water types are Category A, 64.4%; Normal earth alkaline water; prevailing HCO_3^- in the rainy season and Category C, 51.1%; Normal earth alkaline water; prevailing SO_4^{2-} or Cl^- in the dry season. This groundwater has a modern age and is being rapidly recharged by precipitation.

3.3. Water Quality

3.3.1. Water Quality for Drinking Purposes

In urban and semi urban slums and some rural areas in Cameroon, groundwater sources in the form of dugwells or borewells are the only source for drinking water. In the present study, to ascertain whether or not the groundwater in use by the population of the capital city in Cameroon meets the chemical water quality guidelines, the following water quality parameters are determined (WHO, 2017).

1) Water Quality Index WQI

The WHO permissible values of ions present in the groundwater have been used to calculate WQI values (Pradhan et al., 1998; Asadi et al., 2007). For the rainy season 43 samples, 95.6% have WQI 0 - 25; Excellent. 2 samples, 4.4% have WQI 26 - 50; Good, while in the dry season; 15 samples, 33.3% have WQI 0 - 25; excellent. 9 samples, 20% have WQI 26 - 50; Good; 8 samples, 17.7% have WQI 51 - 75 poor; 7 samples, 15.5% have WQI 76 - 100; very poor and 6 samples, 13.3% have WQI > 100; unsuitable **Figure 15**.

2) Total Hardness

During the rainy season total hardness (TH) ranges between 1.00 to 17.00 mg/L with an average of 8.36 mg/L, and during dry season, it ranges between 0.50 to 11.00 mg/L with an average of 6.82 mg/L. All the 45 (100%) groundwater samples for both seasons are (<50 mg/L) soft. The total hardness (TH) of water is a measure of mainly calcium carbonate and magnesium carbonate dissolved in

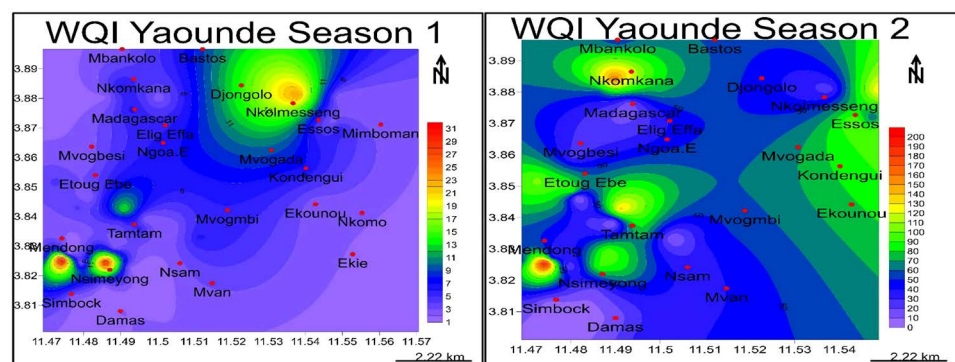


Figure 15. Water Quality Index (WQI) Classification for Yaoundé groundwater; in the wet season high values occur at Nkolmesseng, Mendong and Nsimeyong while in the dry season at Nkomkana and Nsimeyong.

groundwater. The general acceptance level of hardness is 300 mg/L, although WHO has set an allowable limit of 600 mg/L (Figure 16). Water hardness has no known adverse effects; however, some evidence indicates its role in heart disease. Hard water is unsuitable for domestic use and it is a measure of the Ca^{2+} and Mg^{2+} content expressed in equivalent of calcium carbonate (WHO, 2017).

3.3.2. Water Quality for Agro-Industrial Purposes

To assess the overall irrigational water quality of the samples collected, six computed water quality parameters have been considered; namely, Sodium Percentage (SSP), Sodium Adsorption Ratio (SAR), Soluble Permeability Index (P.I.), Residual Sodium Carbonate (RSC), Magnesium Adsorption Ratio and Kelly's Ratio.

1) Sodium Adsorption Ratio (SAR)

SAR values are plotted against EC values (in $\mu\text{S}/\text{cm}$) on the U.S. Salinity diagram to categorize analysed water samples according to their irrigational suitability quotient. SAR values range from 0.005 - 0.075 in rainy seasons and 0.01 - 0.14 during Dry season Figure 17. Based on the SAR values, all samples have low sodium hazard and on plotting over the USSL Salinity diagram Figure 11 all the 45 samples (100%) fall in the $S_1\text{-C}_0$, $S_1\text{-C}_1$, $S_1\text{-C}_2$, $S_1\text{-C}_3$ Classes for both rainy season and dry season considered suitable for irrigation.

2) Soluble Sodium Percentage (SSP) or Na%

Soluble Sodium Percentage (SSP) is used to evaluate sodium hazard. SSP values range from 1.50% - 15.00% in rainy season and 3.00% - 26% during the dry season. Water with a SSP greater than 60% can result in sodium accumulations that will cause a breakdown in the soil's physical properties Figure 18 (Khodapanah et al., 2009). The SSP values and the EC values have been plotted on the Wilcox diagram Figure 19 to give sodium hazard Classification. In the rainy season 42 samples (93.3%) fall under Class I "Excellent to good" and in Class II, 3 samples (6.7%) "Good to Permissible" while during the dry season 44 samples (97.8%) Class I "Excellent to good" and 01 sample (2.2%) in Class II "Good to Permissible" respectively. High sodium ion concentration in soil can take a toll

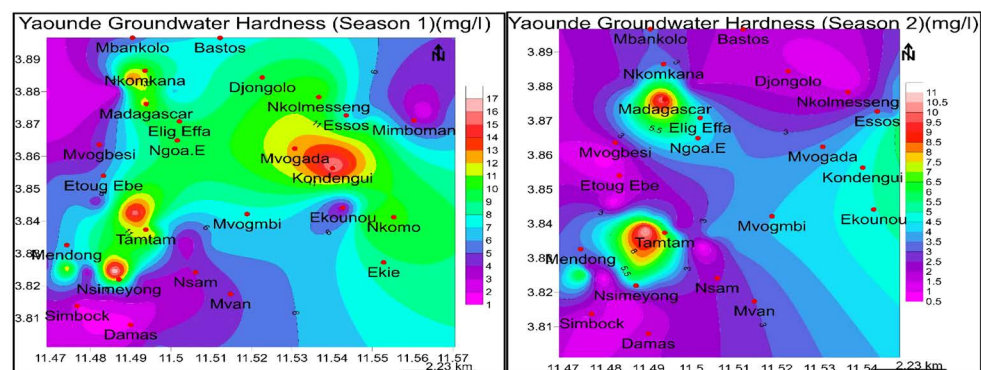


Figure 16. Total hardness TH of groundwater in Yaoundé; in the wet season high values occur at Nkomkana, Kondengi, Tamtam, and Nsimoyong while in the dry season at Madagascar and Tamtam.

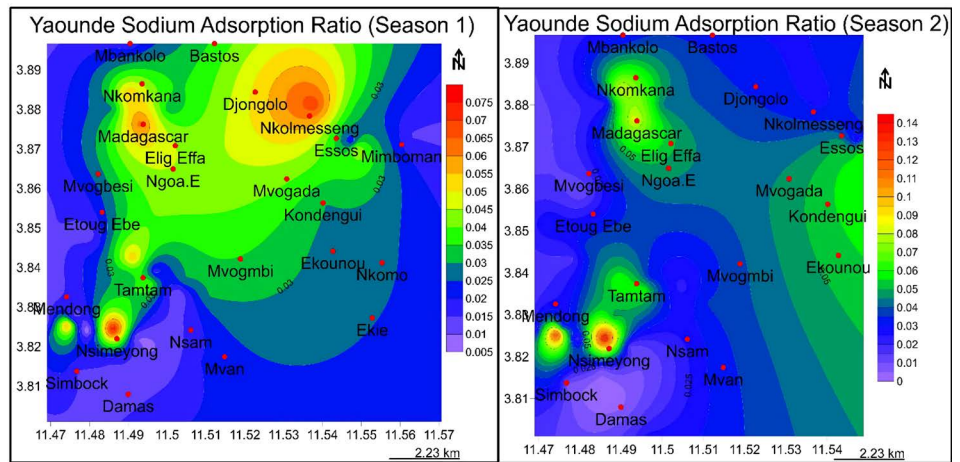


Figure 17. SAR values for groundwater in Yaoundé; rainy season values in the wet season high values occur at Madagascar, Nkolmesseng and Nsimeyong, while in the dry season at Nsimeyong, and Mendong.

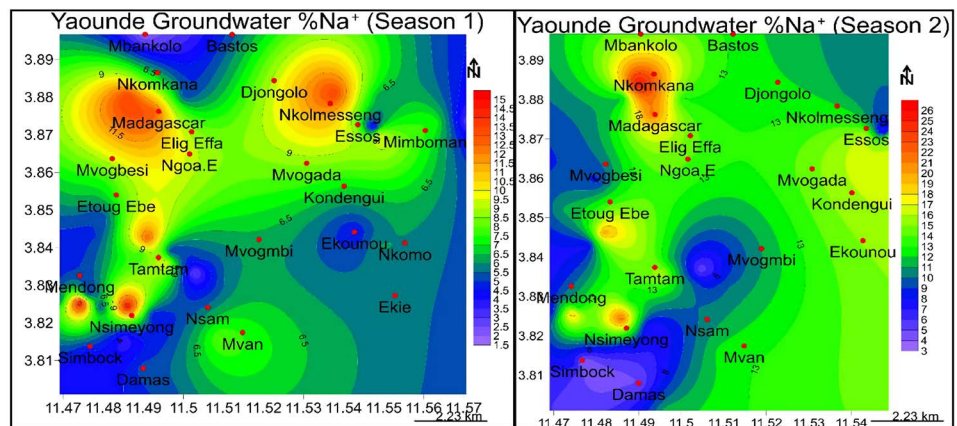


Figure 18. Sodium per cent (Na %) of Yaoundé groundwater; in the wet season high values occur at Madagascar, Nkolmesseng, Nsimeyong and Mendong, while in the dry season at Nsimeyong, Etoug-Ebe, Madagascar and Nkomkana.

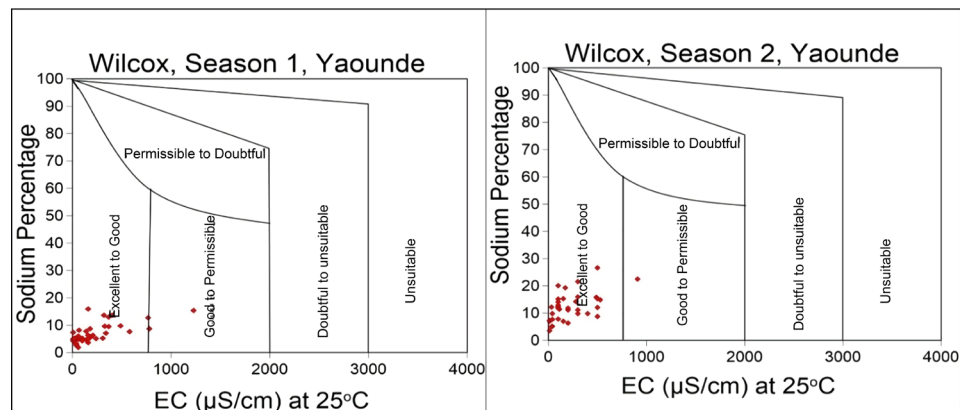


Figure 19. Wilcox plot of Na% vs. EC for groundwater in Yaoundé; in the rainy season 42 samples, 93.3 % is in Class I “Excellent to good” and in Class II; 3 samples, 6.7% “Good to Permissible” while in the dry season 44 samples, 97.8% Class I “Excellent to good” and 01 sample, 2.2% in Class II “Good to Permissible” for irrigation.

on internal drainage patterns in soil as release of calcium and magnesium ions are facilitated due to absorption of sodium by clay particles.

3) Permeability Index (PI)

The soil permeability of an area eventually decreases due to continuous irrigational practices and is defined based on quantity of bicarbonate, sodium, calcium and magnesium in water an empirical index termed, “Permeability Index” (Dooneen, 1964). Permeability index in Yaoundé **Figure 20** varies from 4.00 Nkomo - 250.00 Simbok in rainy season and from 12.00 Nkomo - 440.00 Nsimeyong in dry season. Using the FAO Classification based on the PI; in the rainy season, 3 samples, 7% are Class I, excellent; 36 samples, 80% are in Class II; Good and 6 samples, 13% are in Class III; unsuitable while during the dry season, No sample was in Class I, 40 samples, 88.9% are in Class II; Good, and 5 samples (11.1%) are in Class III; unsuitable **Figure 21**.

4) Residual Sodium Carbonate (RSC)

Residual sodium carbonate (RSC) index of irrigation soil water indicates the alkalinity hazard of a soil. In Yaoundé, groundwater RSC values range between 0.5 Simbok - 1.75 Nkondengi in the rainy season and 0.25 Mvogbesi, Nsimeyong - 1.45 Tamtam, Madagascar in the dry season. In the rainy season, 42 samples 93.4% have RSC < 1.25; Good, 2 samples (4.4%) have RSC > 1.25 - 2.5 <; Doubtful and 1 sample (2.2%) has RSC > 2.5; Unsuitable (**Figure 23**). In the dry season; 44 samples (97.8%) have RSC < 1.25; Good and 1 sample (2.2%) has RSC > 1.25 - 2.5<; Doubtful (**Figure 22**). That 93.4% and 97.8% of the water samples have RSC < 1.25 in both seasons indicates groundwater in this area poses no alkaline hazard to the soil in both dry and wet seasons. Only 2.2% in the rainy season represents localised hazards. RSC index is used to find water suitability of for irrigation in clayey soils which has high cation exchange capacity. When dissolved sodium in comparison with dissolved calcium and magnesium is high in water, clay soils swell or undergo dispersion which drastically reduces infiltration capacity.

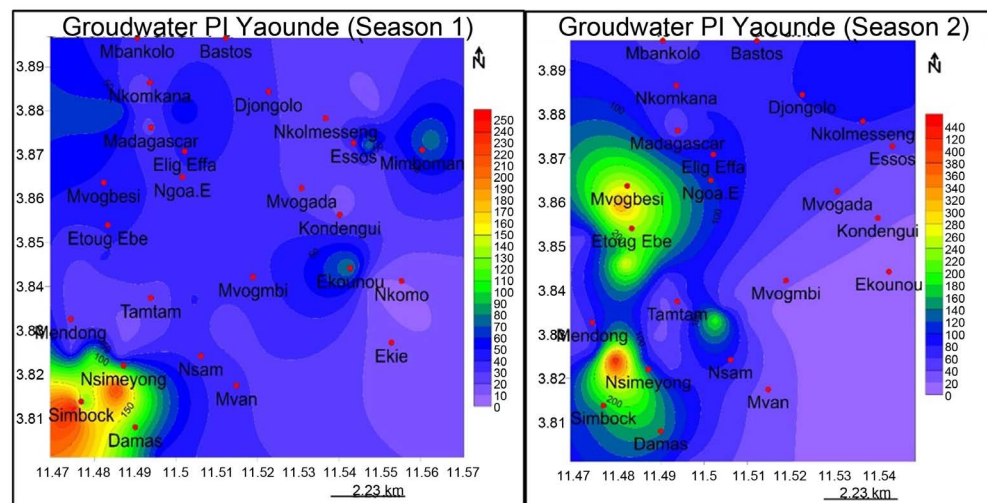


Figure 20. Permeability Index for groundwater in Yaoundé; in rainy season is from 4.00 (Nkomo) - 250.00 (Simbok) and in the dry season from 12.00 (Nkomo) - 440.00 (Nsimeyong).

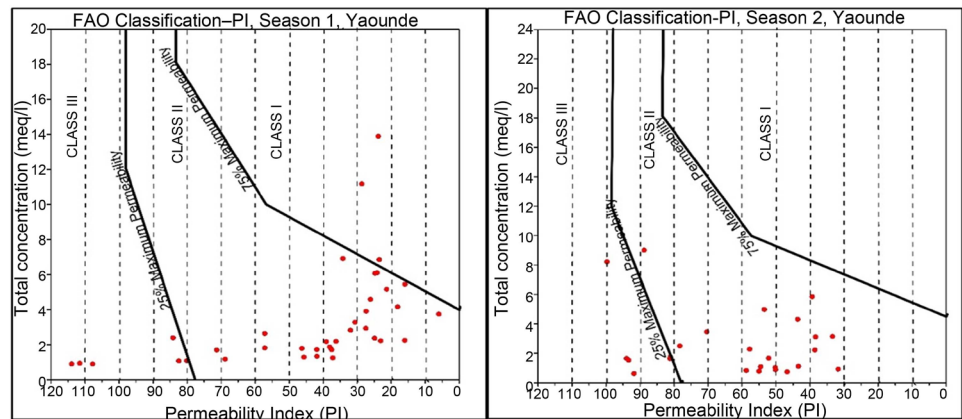


Figure 21. FAO Classification of groundwater in Yaoundé; during the rainy season1, 3 samples, 7% are Class I, excellent; 36 samples, 80% are in Class II; Good and 6 samples, 13% are in Class III; unsuitable. In the dry season2, No sample is in Class I, 40 samples, 88.9% are in Class II; Good, and 5 samples, 11.1% are in Class III; unsuitable.

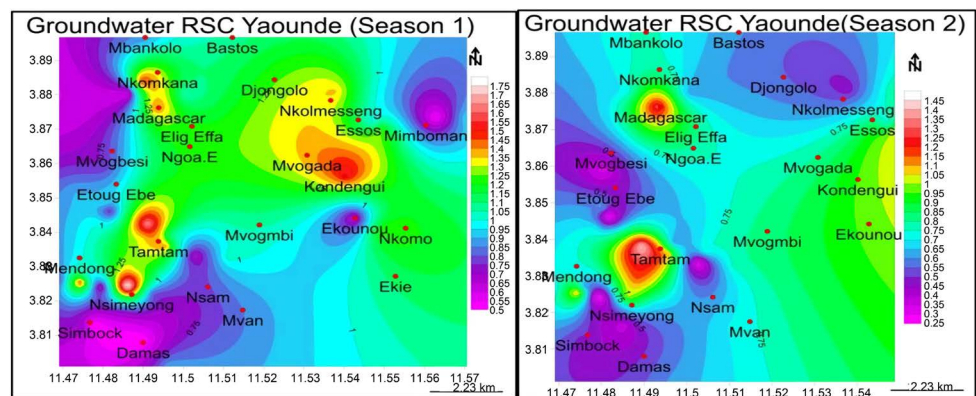


Figure 22. Residual Sodium Carbonate RSC; in the rainy season, values range from 0.5 (Simbok) - 1.75 (Nkondengi) and in the dry season 0.25 (Mvogbesi, Nsimeyong) - 1.45 (Tamtam, Madagascar).

5) Magnesium Adsorption Ratio (MAR)

MAR categorizes water into two broad Classes: water having MAR < 50 considered suitable for irrigation and MAR > 50 considered unsuitable (Paliwal, 1972). In the rainy season in Yaoundé, 25 samples (56%) are <50; suitable and 20 samples (44%) >50 are unsuitable. In the dry season, 33 samples (73%) are <50; suitable and 12 samples (27%) > 50 are unsuitable **Figure 23**. In the dry season, 73% of the samples have MAR values suitable for irrigation. During the rainy season, the MAR values change rendering about almost half of the samples unsuitable for irrigation. Generally in most groundwater Ca^{2+} and Mg^{2+} maintain a state of equilibrium (Hem, 1985). During equilibrium more Mg^{2+} in groundwater adversely affects the soil quality rendering it alkaline which result in decrease of crop yield (Giggenbach, 1988).

6) Kelly's Ratio (KR)

This is ratio is of sodium ion concentration over calcium and magnesium ion concentrations (Kelly, 1963). KR < 1 is considered suitable for irrigation and

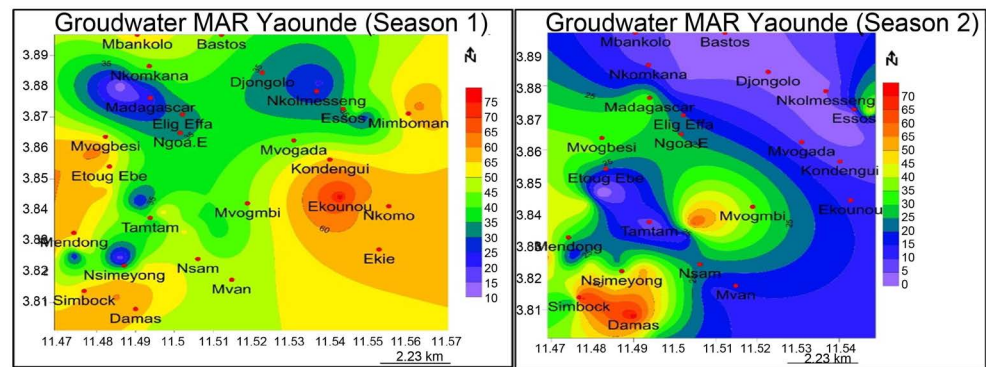


Figure 23. Magnesium Adsorption Ratio MAR of Yaoundé groundwater; in the wet season high values occur at Ekounou, Mimbomann, while in the dry season at Simbock, Damas and Mvogmbi.

$KR > 1$ is unsuitable. During rainy season, KR values vary between 0.003 - 0.026 and during the dry season the values vary between 0.005 - 0.07 (**Figure 24**). All 45 samples, 100% in Yaoundé were suitable for irrigation for both seasons.

3.4. Aquifer Setting

From field observations, borehole lithostratigraphic sections and by comparing various case studies in similar terrain in gneiss-type rocks and in some parts of Yaoundé have indicated that topography controls groundwater flow and that base flow to rivers is an important factor moderating groundwater movement in Yaoundé as shown here by the groundwater contours for four seasons (Teikeu et al., 2016; Wyns et al., 2004; Clark, 1985; Acworth, 1987; Obiefuna & Sheriff, 2011; Fouépé Takounjou et al., 2012). Lithologies from their VES curves corroborated the lithologies of boreholes from this area (Teikeu et al., 2012). Some researchers have concluded with a dual aquifer conceptual model for fractured rock gneiss aquifers (Teikeu et al., 2012; Wyns et al., 2004). Although weathered gneiss terrains are layered, aquifer models suitable for sedimentary terrains of layered formations cannot apply here where the fissures and fractures cut across the layering in the formations' regolith that still retain relics of the continuous gneiss fractures and fissures intact in saprolite, weathered basement and fresh fractured basement. Similar weathering and erosional processes induce similar geological structures and that at catchment scale for water resources applications, the fresh basement is considered as impermeable; of very low storativity and that in highly foliated rocks (i.e., gneisses or schists) the orientation of the fissures is controlled by the rock structure (Dewandel et al., 2006). Also, fissured layers assume storage functions in composite aquifers with the fresh basement being permeable only locally, where tectonic fractures are present (Wyns et al., 2004). This depends to a large extent on the density of fractures (the number of fissures/fractures per unit area). At high density shear zones as in Yaoundé; these rocks could store huge reserves of groundwater in the fractures and fissures.

As a consequence of the hydrogeochemical analysis above, a modified hydrogeological conceptual model of weathered migmatite/gneiss-type aquifer in Yaoundé is proposed (**Figure 25**).

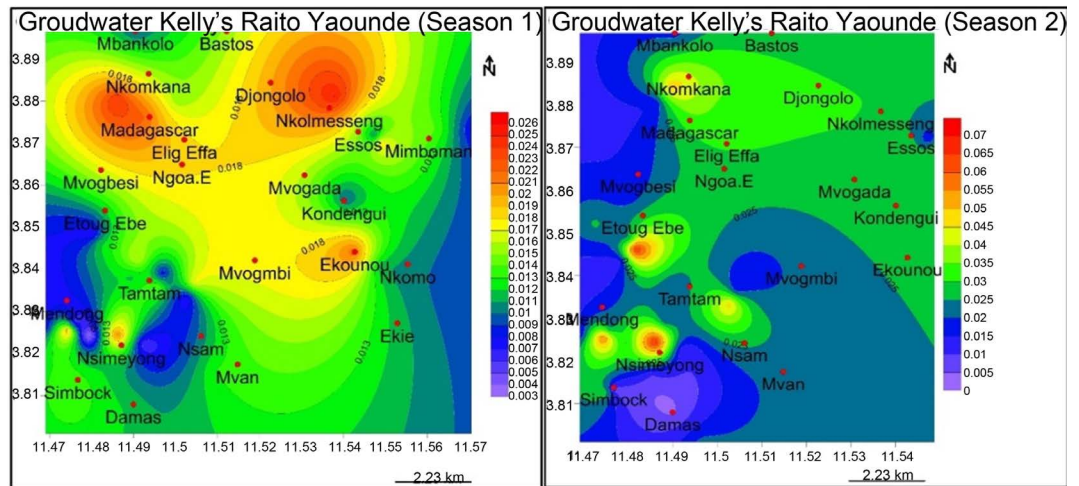


Figure 24. Kelly's Ratio KR for groundwater in Yaoundé; during rainy season, values are 0.003 - 0.026 and during the dry season 0.005 Damas - 0.07 EtougEbe. All 45% samples, 100 are <1, suitable for irrigation for both seasons.

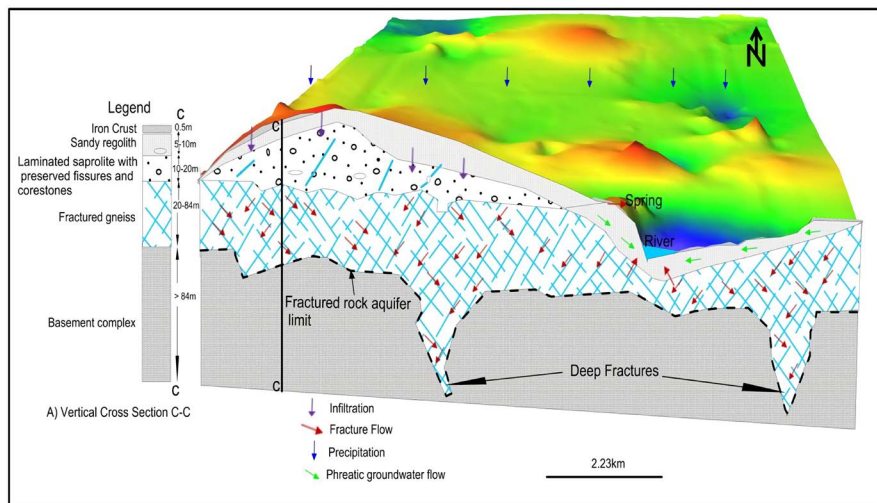


Figure 25. Modified hydrogeological conceptual model of weathered migmatite/gneiss-type aquifer in Yaoundé

In this model, precipitation infiltrates and flows through;

- 1) Sandy clayey weathered basement regolith (with relics of fissures and fractures)
- 2) Fractured/fissured unweathered basement
- 3) Deep large regional fractures with larger flow volumes.

Groundwater is stored in;

- 1) The fracture/fissure insular network infrastructure of unconnected joints, fissures and fractures; the phreatic local subsystem with only limited local storage and can only supply dugwells in the wet seasons. Here storage is directly impacted by seasonal variations in precipitation.

- 2) The fracture/fissure network infrastructure of connected joints, fissures and fractures; the intermediate subsystem. Here only intermediate flow and storage

takes place with limited connection to the regional subsystem which could supply dugwells throughout the year and low discharge borewells in the rainy season.

3) The fracture/fissure interconnected network infrastructure which also serves as the major conduit/channel for storage and flow of groundwater; the Regional subsystem. Here groundwater is stored (channel storage) and flows throughout the region through interconnected fracture/fissure networks that can supply large discharge borewells.

Groundwater contours are concentric around areas of high elevation and mimic the surface in all seasons; indicative of topography controlled piston flow in a phreatic aquiferous formation.

The results of laboratory analysis of groundwater together with hydrogeochemical tools have elucidated the processes and mechanisms affecting the groundwater chemistry in Yaoundé: *Chemical weathering of rock-forming minerals* and *atmospheric precipitation* are the major and minor factors influencing the processes of groundwater ions acquisition from the matrix of the aquiferous formation while *ion exchange*, *dissolution* and *mixing* are the mechanisms by which the groundwater equilibrates and develops its chemical character over its flow domain. The dominant water types are *Ca-rich waters* and *Mg-rich waters*. The dominant Hydrogeochemical facies are; *Ca-Mg-HCO₃* in the rainy season and *Ca-Mg-Cl-SO₄* in the dry season. All samples are “fresh water” type during all seasons.

The *Ca-Mg-HCO₃* hydrogeochemical facies is characteristic of freshly recharged groundwater that has equilibrated with CO₂ and soluble carbonate minerals under open system conditions in the vadose zone in a single hydraulic phreatic aquiferous fractured rock formation; the Yaoundé migmatite gneiss.

The Yaoundé groundwater samples in this fractured rock aquifer belong to the bicarbonate group with significant amounts of magnesium and calcium cations. The Sodium and Potassium content can be attributed to the presence of clays in the geology resulting in the release of potassium and sodium ions from the argillaceous materials by ion-exchange processes between the formation waters and clay minerals.

The overall chemical qualities of ground water with respect to drinking standards are good in all seasons with low TDS and are soft.

Quantitative chemical analysis results reflect the dominant anions to be calcium and Magnesium and the dominant anions bicarbonate and chloride characteristic of migmatite gneiss basement in Africa.

The pH, electrical conductivity, total dissolved solids and temperature values of water samples are below guideline acceptable limits and variable with seasons indicative of phreatic aquifers (WHO, 2017).

RSC, SAR, SSP, MAR, PI and KR indicating the suitability of groundwater samples for irrigation is Excellent-to-Good in almost all cases. By these indices the groundwater quality of Yaoundé has been assessed for its agro-industrial suitability, found to neither cause salinity hazards nor have an adverse effect on the soil properties and is thus suitable for irrigational purposes.

4. Conclusion

The process of ions acquisition of Yaoundé groundwater is three-fold: by recharge through atmospheric precipitation, by ion exchange/simple dissolution between the rock-groundwater and by groundwater mixing in its flow path.

The groundwater in Yaoundé is of CaHCO_3 , MgHCO_3 and MgCl^- freshwater types low in ionic content that vary with seasons and soft, typical of phreatic aquifers in basement aquifers.

Groundwater chemical quality indices indicate the water is good for domestic and agro industrial use in both seasons.

The Yaounde gneiss fractured rock aquifer is made up of three flow fields: a) The local flow field with stagnant areas where infiltrated water is almost stationary and connected to the other flow regimes only during the peak of the rainy season, with the dominant hydrogeochemical facies being Ca-Mg-Cl-SO_4 at all seasons; b) The intermediate flow field where some fissures are interconnected to other fissures in the meter scale during the dry season; and c) The regional flow field where the fissures are interconnected in the kilometer scale in all seasons. The dominant hydrogeochemical facies in the intermediate and regional flow is Ca-Mg-HCO_3 .

The weathered regolith, the local fissures and intermediate fissures/fractures and the regional fracture networks form a single chemically continuous unit indicating a single phreatic weathered basement fractured-rock aquifer of variable depth up to 83 m.

There is a need for more detailed studies to determine aquifer characteristics: permeability, transmissivity and storativity, vertical and lateral regional extent of aquifer boundaries in this aquifer, groundwater pollution potentials for biological, organic and trace metals to enable a complete characterization of these aquiferous formations.

Acknowledgements

We sincerely thank all the field workers, Geofor-Cameroon and the private well owners for access and well data.

Funding

This research did not receive any specific grant from funding agencies in the public, commercial, or not-for-profit sectors.

Conflicts of Interest

None.

References

- Acworth, R. I. (1987). The Development of Crystalline Basement Aquifers in Tropical Environment. *Quarterly Journal of Engineering Geology*, 20, 265-272.
<https://doi.org/10.1144/GSL.QJEG.1987.020.04.02>

- American Public Health Association (APHA) (1995). *Standard Methods for Examination of Water and Waste Water*. Washington DC: American Public Health Association, American Water Works Association and Water Pollution Control Federation.
- Asadi, J. J., Vuppala, P., & Reddy, M. A. (2007). Remote Sensing and GIS Techniques for Evaluation of Groundwater Quality in Municipal Corporation of Hyderabad (Zone-V), India. *International Journal of Environmental Research and Public Health*, 4, 45-52. <https://doi.org/10.3390/ijerph2007010008>
- Barcelona, M. J., Gibbs, J. P., Hellfrich, J. A., & Garske, E. E. (1985). *Practical Guide for Groundwater Sampling* (p. 169). US Environmental Protection Agency, EPA/600/2-85/104.
- Clark, L. (1985). Groundwater Abstraction from Basement Complex Areas of Africa. *Quarterly Journal of Engineering Geology and Hydrogeology*, 18, 25-34. <https://doi.org/10.1144/GSL.QJEG.1985.018.01.05>
- Dewandel, B., Lachassagne, P., Maréchal, J. C., Wyns, R., & Krishnamurthy, N. S. (2006). A Generalized 3-D Geological and Hydrogeological Conceptual model of Granite Aquifers Controlled by Single or Multiphase Weathering. *Journal of Hydrology*, 330, 260-284. <https://doi.org/10.1016/j.jhydrol.2006.03.026>
- Djeuda Tchapinga, H. B., Tanawa, E., Temgoua, E., Siakeu, J., & Ngo Massana, B. (1999). *Flow Pattern, Recharge Mechanism and Residence Time of Groundwater in the Aquiferous Formations of the Weathered Basement: Case Study of the Anga'a Basin in Yaoundé, Cameroun* (pp. 117-126). Yaoundé: University Press Yaoundé.
- Doneen, L. D. (1962). The Influence of Crop and Soil on Percolating Water. In *Proceedings 1961 Biennial Conference on Groundwater Recharge* (pp. 156-163). Fresno, CA: Ground Water Recharge Laboratory, Southwest Branch, Soil and Water Conservation Research Division.
- Doneen, L. D. (1964). *Water Quality for Agriculture* (p. 48). Davis, CA: University of California.
- Durov, S. A. (1948). Classification of Natural Waters and Graphical Representation of Their Composition. *Doklady Akademii Nauk SSSR*, 59, 87-90.
- Eaton, F. M. (1950). Significance of Carbonate in Irrigation Water. *Soil Science*, 69, 123-134. <https://doi.org/10.1097/00010694-195002000-00004>
- Fouépé Takounjou, A. (2012). *Groundwater Flow Modeling and Mass Transport Simulation in a Shallow Aquifer on Crystalline Basement: The Case of the Anga'a River Watershed, Yaoundé-Cameroon*. Ph.D. Thesis, Cameroon: University of Yaoundé.
- Fouepe Takounjou, A., Ndam Ngoupayou, J. R., Riotte, J., Takem, G. E., Mafany, G., Marechal, J. C., & Ekodeck, G. E. (2011). Estimation of Groundwater Recharge of Shallow Aquifer on Humid Environment in Yaoundé-Cameroon Using Hybrid Water-Fluctuation and Hydrochemistry Methods. *Environmental Earth Sciences*, 64, 107-118. <https://doi.org/10.1007/s12665-010-0822-x>
- Gibbs, R. J. (1970). Mechanisms Controlling World's Water Chemistry. *Science*, 170, 1088-1090. <https://doi.org/10.1126/science.170.3962.1088>
- Giggenbach, W. F. (1988). Geothermal Solute Equilibria. Derivation of Na-K-Mg-Ca Geoindicators. *Geochimica et Cosmochimica Acta*, 52, 2749-2765. [https://doi.org/10.1016/0016-7037\(88\)90143-3](https://doi.org/10.1016/0016-7037(88)90143-3)
- Hem, J. D. (1985). *Study and Interpretation of the Chemical Characteristics of Natural Water* (3rd ed.). Jodhpur, Rajasthan: Scientific Publishers.
- Hounslow, A. W. (1995). *Water Quality Data: Analysis and Interpretation* (p. 397). New York: Lewis Publishers.
- ISO (2003). *Standard ISO 5667 3: Water Quality—Sampling—Part 3: Guidance on the*

- Preservation and Handling of Water Samples*. Geneva: International Organization for Standardization.
- ISO (2006). *Standard ISO 5667 1: Water Quality—Sampling—Part 1: Guidance on the Design of Sampling Programs and Sampling Techniques*. Geneva: International Organization for Standardization.
- ISO (2009). *Standard ISO 5667-11: Water Quality—Sampling—Part 11: Guidance on Sampling of Groundwaters*. Geneva: International Organization for Standardization.
- Kelley, W. P. (1940). Permissible Composition and Concentration of Irrigation Waters. *Proceedings of the American Society of Civil Engineers*, 66, 607-613.
- Kelly, W. P. (1963). Use of Saline Irrigation Water. *Soil Science*, 95, 385-391.
<https://doi.org/10.1097/00010694-196306000-00003>
- Khodapanah, L., Sulaiman, W. N. A., & Khodapanah, N. (2009). Groundwater Quality Assessment for Different Purposes in Eshtehard District Tehran, Iran. *European Journal of Scientific Research*, 36, 543-553.
- Kringel, R., Rechenburg, A., Kuitcha, D., Fouépé, A., Bellenberg, S., Kengne, I. M., & Fomo, M. A. (2016). Mass Balance of Nitrogen and Potassium in Urban Groundwater in Central Africa, Yaoundé Cameroon. *Science of the Total Environment*, 547, 382-395.
<https://doi.org/10.1016/j.scitotenv.2015.12.090>
- Kuitcha, D., Ndjama, J., Tita, A. M., Lienou, G., Kamgang, K. B. V., Ateba, B. H., & Eko-deck, G. E. (2010). Bacterial Contamination of Water Points of the Upper Mfoundi Watershed, Yaoundé, Cameroon. *African Journal of Microbiology Research*, 4, 568-574.
- Langguth, H. R. (1996). *Groundwater Characteristics in Bereiech Des Velberter Sattles* (p. 127). North Rhine-Westphalia: Ministry of Agricultural and Land Management Research Duesseldorf.
- Lloyd, J. A., & Heathcote, J. A. (1985). *Natural Inorganic Hydrochemistry in Relation to Groundwater: An Introduction* (p. 296). New York: Oxford University Press.
- Mvondo, H., Owona, S., Ondo, J. M., & Essono, J. (2007). Tectonic Evolution of the Yaoundé Segment of the Neoproterozoic Central African Orogenic Belt in Southern Cameroon. *Canadian Journal of Earth Sciences*, 44, 433-444.
<https://doi.org/10.1139/e06-107>
- Nola, M., Njine, T., Monkiedje, A., Sikati, F. V., Djuikom, E., & Tailliez, R. (1998). Bacteriological Quality of Streams and Wells in Yaoundé, Cameroun. *Cahier Santé*, 8, 330-336
- Nyende, J., Van Tonder, G. & Vermeulen, D. (2014). Hydrochemical Characteristics of Ground and Surface Water under the Influence of Climate Variability in Pallisa District, Eastern Uganda. *International Journal of Environmental Science and Toxicology Research*, 2, 90-107.
- Nzenti, J. P., Barbey, P., Macaudiere, J., & Soba, D. (1988). Origin and Evolution of the Late Precambrian High-Grade Yaoundé Gneisses (Cameroon). *Precambrian Research*, 38, 91-109. [https://doi.org/10.1016/0301-9268\(88\)90086-1](https://doi.org/10.1016/0301-9268(88)90086-1)
- Obiefuna, G. I., & Sheriff, A. (2011). Assessment of Shallow Ground Water Quality of PindigaGombe Area, Yola Area, NE, Nigeria for Irrigation and Domestic Purposes. *Research Journal of Environmental and Earth Sciences*, 3, 131-141.
- Paliwal, K. V. (1972). *Irrigation with Saline Water* (p. 198). New Delhi: Indian Agricultural Research Institute.
- Piper, A. M. (1944). A Graphic Procedure in the Geochemical Interpretation of Water Analysis. *Eos, Transactions American Geophysical Union*, 25, 914-928.

<https://doi.org/10.1029/TR025i006p00914>

- Pradhan, S. K., Patnaik, D., & Rout, S. P. (1998). Ground Water Quality: An Assessment around a Phosphatic Fertilizer Plant at Paradip. *Indian Journal Environment Protection*, 18, 769-772.
- Raghunath, I. I. M. (1987). *Groundwater* (2nd ed., pp. 344-369). New Delhi, India: Wiley Eastern Ltd.
- Richards, L. A. (1954). *Diagnosis and Improvement of Saline Alkali Soils*. Agriculture Handbook 60. Washington DC: US Department of Agriculture.
- Rossetto, R., De Filippis, G., Borsi, I., Foglia, L., Massimiliano, C., Criollo, R., & Vázquez-Suñé, E. (2018). Integrating Free and Open Source Tools and Distributed Modeling Codes in GIS Environment for Data-Based Groundwater Management. *Environmental Modelling and Software*, 107, 210-230.
<https://doi.org/10.1016/j.envsoft.2018.06.007>
- Shuttle Radar Topographic Mission, SRTM (NASA, Version 4) (2018).
<http://srtm.csi.cgiar.org>
- Sisodia, R., & Moundiotiya, C. (2006). Assessment of the Water Quality Index of Wetland Kalakho Lake, Rajasthan, India. *Journal of Hydro-Environment Research*, 14, 1-11.
- Szaboles, I., & Darab, C. (1964). The Influence of Irrigation Water of High Sodium Carbonate Content of Soils. In *Proceedings of 8th International Congress on International Society of Soil Science* (pp. 803-812). Hungary: Research Institute for Soil Sciences and Agricultural Chemistry of the Hungarian Academy of Sciences.
- Tabue, Y. J., Feumba, R., Wethe, J., Ekodeck, G. E., & De Marsily, G. (2012). Evaluation of Groundwater Suitability for Domestic and Irrigational Purposes: A Case Study from Mingoa River Basin, Yaoundé, Cameroon. *Journal of Water Resource and Protection*, 4, 285-293. <https://doi.org/10.4236/jwarp.2012.45031>
- Tanawa, E., Djeuda Tchapgna, H. B., Ngnikam, E., Temgoua, E., & Siakeu, J. (2002). Habitat and Protection of Water Resources in Suburban Areas in African Cities. *Building and Environment*, 37, 269-275.
[https://doi.org/10.1016/S0360-1323\(01\)00024-5](https://doi.org/10.1016/S0360-1323(01)00024-5)
- Teikeu, A. W., Njandjock, N. P., Bisso, D., Yene Atangana, Q., & Sep Nlomgan, J. P. (2012). Hydrogeophysical Parameter Estimation for Aquifer Characterization in Hard Rock Environment: A Case Study from Yaoundé, Cameroon. *Journal of Water Resource and Protection*, 3, 244-253.
- Teikeu, A. W., Njandjock, N. P., Tabod, C. T., Akame, J. M., & Nshagali, G. B. (2016). Hydrogeological Activity of Lineaments in Yaoundé Cameroon Region Using Remote Sensing and GIS Techniques. *The Egyptian Journal of Remote Sensing and Space Sciences*, 19, 49-60. <https://doi.org/10.1016/j.ejrs.2015.12.006>
- Todd, D. K. (1980). *Ground Water Hydrogeology*. New York: John Wiley and Sons, Inc.
- United States Central Intelligence Agency (2018). *World Facts Book*. <https://www.cia.gov>
- Wilcox, L. V. (1955). *Classification and Use of Irrigation Waters* (p. 19). Circular No. 960, Washington DC: United States Department of Agriculture.
- World Health Organization, WHO (2017). *Guidelines for Drinking-Water Quality: 4th Edition, Incorporating the 1st Addendum*. Geneva: World Health Organization.
- Wyns, R. J., M., Lachassagne, P., Baltassat, J.-M., Vairon, J., Legchenko, A., & Mathieu, F. (2004). Application of SNMR Soundings for Groundwater Reserves Mapping in Weathered Basement Rocks (Brittany France). *Bulletin of the Geology Society of France*, 175, 21-34. <https://doi.org/10.2113/175.1.21>