

Inter-Specific Biochemical Diversity between *Echis pyramidum* and *Eryx colubrinus* Inhabiting El-Faiyum, Egypt

Mohamed A. M. Kadry^{1*}, Eman M. E. Mohallal², Doha M. M. Sleem³, Mohamed A. S. Marie¹

¹Zoology Department, Faculty of Science, Cairo University, Cairo, Egypt

²Ecology Unit of Desert Animals, Desert Research Center, Cairo, Egypt

³Zoology Department, Faculty of Science, Ain Shams University, Cairo, Egypt

Email: ecokadry@yahoo.com

Received 2 July 2015; accepted 31 July 2015; published 3 August 2015

Copyright © 2015 by authors and Scientific Research Publishing Inc.

This work is licensed under the Creative Commons Attribution International License (CC BY).

<http://creativecommons.org/licenses/by/4.0/>



Open Access

Abstract

Discontinuous polyacrylamide gel electrophoreses for lactate dehydrogenase (*Ldh*) and alfa-esterase (α -*Est*) isoenzymes were conducted for biochemical differentiation between *Echis pyramidum* and *Eryx colubrinus* inhabiting El-Faiyum, Egypt. Total lipids and total protein of liver and muscle tissues in both species were also analyzed. Three *Ldh* isoforms were recorded in both species and the activity and relative front (RF) of *Ldh*-1 seemed to be higher in *E. pyramidum* than in *E. colubrinus*. This high activity could be supported by the significant increase in the total lipids and total protein in liver and muscle tissues of this species. It is thus possibly reasonable to suppose that *E. pyramidum* is more active, energetic and adaptable in its habitat than *E. colubrinus*. α -*Est* showed five isozymic forms fractions in *E. pyramidum*, while it showed only four isoforms in *E. colubrinus*. α -*Est*-1 was the first clear, dense and thick isoform in *E. pyramidum*, but it was completely absent in *E. colubrinus*. High activity of the esterase isoform; α -*Est*-1 only in the heart tissue of *E. pyramidum* may reflect the high ability of *E. pyramidum* to be more resistant to the accumulated toxic residues in its body tissues than *E. colubrinus*.

Keywords

Echis pyramidum (Viperidae), *Eryx colubrinus* (Boidae), *Ldh* Isoenzyme, *Est* Isoenzyme, Total Lipids

1. Introduction

The squamates are the most diverse group containing the lizards and snakes [1]. Several investigations have

*Corresponding author.

How to cite this paper: Kadry, M.A.M., Mohallal, E.M.E., Sleem, D.M.M. and Marie, M.A.S. (2015) Inter-Specific Biochemical Diversity between *Echis pyramidum* and *Eryx colubrinus* Inhabiting El-Faiyum, Egypt. *Advances in Bioscience and Biotechnology*, 6, 495-500. <http://dx.doi.org/10.4236/abb.2015.68051>

been recorded on the fauna of Egyptian reptiles [2] [3]. The suborder Serpentes is distributed all over the world [4] [5]. Previous descriptions of the external and taxonomical features of some snakes have been ambiguous and unreliable. Therefore, several authors used the biochemical electrophoresis [6] and molecular sequence analysis [3] [7]-[13] to resolve the cladistic relationships among snakes and to clarify their phylogeny.

The family, viperidae comprises approximately 270 species of venomous snakes. The saw-scaled viper, *Echis pyramidum* (Geoffroy 1827) belongs to the family viperidae and is found in Asia, Africa, India, Iraq, Iran and Afghanistan. It occurs on a range of different substrates, including sand, rock, and soft soil and in scrublands, often found hiding under loose rocks [14]. Boidae, is a family of non-venomous snakes found in America, Africa, Europe, Asia, and some pacific islands. It includes relatively primitive snakes and comprises eight genera and 43 species. The kenyan sand boa, *Eryx colubrinus* (Linnaeus 1758) is found in northern Africa from Egypt as far west as Niger including Somalia, Ethiopia, Sudan, Kenya, and northern Tanzania [15]. It occurs in semi-desert, scrub savannahs and rock outcroppings. Also it prefers sandy and friable soil [16]. Extensive molecular genetic diversity has been discovered within and among populations and species in total protein [17], isoenzymes/alloenzymes [18] and DNA [19].

Isoenzymes are multiple forms of a single enzyme, which often have different isoelectric points and therefore can be separated by electrophoresis. Lactate dehydrogenases (*Ldhs*) isoenzymes are very suitable systems for studying several metabolic, genetic, ecological features, and are very useful in systematic studies [20]. *Ldhs* are a hydrogen transfer enzyme that catalyzes the oxidation of L-lactate to pyruvate with nicotinamide-adenine dinucleotide (NAD)⁺ as hydrogen acceptor, the final step in the metabolic chain of anaerobic glycolysis. Esterase isoenzymes (*Est*) are one of the lipid-hydrolyzing enzymes, possessing high significance in genetics and toxicology [21].

Our present study aimed to investigate the patterns of inter-specific biochemical and genetic diversity between *Echis pyramidum* and *Eryx colubrinus* inhabiting two different sites in El-Faiyum desert of Egypt using the electrophoretic analyses of two isoenzymes.

2. Materials and Methods

2.1. Taxon Sampling and Study Area

A total of 10 individuals of two common Egyptian snake species were collected from two different sites in El-Faiyum desert (5 samples for each species). The first species was the saw-scaled viper, *Echis pyramidum* (Geoffroy 1827) (Reptilia: Viperidae). It is a medium sized snake with a short stocky body, moderate eyes separated from supralabials by scales and gray dorsum with a mid-dorsal series of dark-edged with whitish narrow-like marks [22]. It was collected from Gabal El-Nagar (Mahatet El-Rafa) [29°22'N 30°37'E]; a rocky area near Water drainage and cultivated area planted with wheat (Figure 1).

The other one was the Kenyan sand boa, *Eryx colubrinus* (Linnaeus 1758) (Reptilia: Boidae). It is a short thick snake with a relatively short tail end with a conical scale. It has also scales around the eyes, sandy dorsum with large irregularly shaped dark-brown blotches and yellowish ventral plain [22]. It was collected from Abshowy Kahak [29°24'N 30°38'E]; an area planted near a sandy road (Figure 1).



Figure 1. Photos of *Echis pyramidum* (a) and *Eryx colubrinus* (b) inhabiting El-Faiyum desert, Egypt.

2.2. Sample Preparation and Isoenzyme Assay

Tissue samples of liver and heart were removed and immediately taken to the lab and stored at -80°C for further laboratory use. For isoenzyme extraction, approximately 0.5 g of tissue was homogenized in 10 mL saline solution (PBS, pH = 6.8) using a manual Homogenizer. The homogenates were centrifuged at 5000 rpm for 10 minutes and the supernatants were kept at -20°C until use. The enzymes; alfa-esterase ($\alpha\text{-Est}$) in heart and Lactate dehydrogenase (*Ldh*) in liver supernatants were separated by discontinuous polyacrylamide gel electrophoresis [23] [24].

Electrophoresis was carried out conveniently in discontinuous polyacrylamide gels. An amount of 50 μl of the clear supernatant of the liver and muscle homogenate of each sample was mixed with 20 μl of protein dye (1% bromophenol blue) and 20 μl of 2% sucrose. 30 μl of the mixture per gel slot were used to be applied per each sample for isoenzymes electrophoresis. After electrophoresis, the gel was transferred into a staining solution (50 - 70 ml) according to [25] which was then replaced by a destaining mixture of methanol, acetic acid and water (5:1:5 v/v/v). A potential gradient of high voltage electrode [(20 v/cm), anode] across the gel was applied for 4 h at 8°C for separation of the enzymes.

2.2.1. *Ldh* Isoenzyme

For *Ldh* and after electrophoresis, the gel was soaked in 100 mL of 0.2 M Tris-HCl (pH 8.0) containing 30 mg NBT, 25 mg EDTA, 50 mg NAD, 10 mg L-lactic acid and 2 mg PMS. 0.05 M Tris-HCl pH 8.5 was prepared by dissolving 0.605 g Tris in 50 mL distilled water. The pH was adjusted to 8.5 by HCl. Then the solution was completed to 100 ml by distilled water [26].

2.2.2. $\alpha\text{-EST}$ Isoenzyme

Regarding $\alpha\text{-Est}$, after electrophoresis, the gel was soaked in 0.5 M borate buffer (pH 4.1) for 90 minutes at 4°C . This procedure lowers the pH of the gel from 8.8 to about 7 at which the reaction proceeds readily. The low temperature minimizes diffusion of the protein within the gel. The gel then was rinsed rapidly in two changes of double distilled water. The gel was stained for esterase activity by incubation at 37°C in a substrate solution of 100 mg $\alpha\text{-naphthyl}$ acetate and 100 mg fast blue RR salt in 200 ml of 0.1 M phosphate buffer pH 6.5 [27].

After the appearance of the enzyme bands, the reaction was stopped by washing the gel two or three times with tap water. This was followed by adding the fixative solution, which consists of ethanol and 20% glacial acetic acid (9:11 v/v). The gel was kept in the fixative solution for 24 hours and then was photographed.

All gels were scanned using Gel Doc-2001 Bio-Rad system. For isoenzymes, the bands of enzyme activity were designated according to the system nomenclature proposed by [28]. An abbreviation which corresponds to the name of the isoenzyme designated each locus. When multiple loci were involved, the fastest anodal protein band was designated as locus one, the next as locus two and so on.

2.3. Metabolic Study

Immediately after collection, snakes were dissected. Pieces of liver and thigh muscles were removed and immediately weighed in grams (g) to the nearest 0.01 g. They were stored frozen at -20°C till use. Livers and thigh muscles were processed for estimation of total lipids and total protein according to the method of [29] and [30], respectively using a kit of Biodiagnostics Company.

Our Institutional Animal Care and Use Committee (IACUC) at Zoology Department, Faculty of Science, Cairo University has approved this study protocol from the ethical point of view and according to Animal welfare Act of the Ministry of Agriculture in Egypt that enforces the humane treatment of animals.

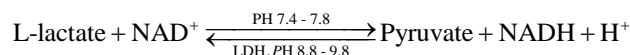
3. Statistical Analysis

Student t-test in the PASW package v. 20 was used to calculate the significance difference of total lipids and total proteins within and between the snake species.

4. Results and Discussion

Ldhs isoenzymes are very suitable systems for studying several metabolic, genetic, ecological features, and are very useful in systematic studies [20] [31]. *Ldhs* are a hydrogen transfer enzymes that catalyze the oxidation of

L-lactate to pyruvate with nicotinamide-adenine dinucleotide (NAD)⁺ as hydrogen acceptor, the final step in the metabolic chain of anaerobic glycolysis. The reaction is reversible and the reaction equilibrium strongly favours the reverse reaction, namely the reduction of pyruvate (P) to lactate (L):



Three *Ldhs* isozymic forms were revealed in the liver tissues of both *Echis pyramidum* and *Eryx colubrinus*. The activity of *Ldh-1* isoform seemed to be higher in *E. pyramidum* than in *E. colubrinus*. Such higher activity was reflected in the thicker and denser bands as well as their higher relative front (RF) in *E. pyramidum* (Figure 2).

The apparent increase in the activity of *Ldh* in liver tissues of *E. pyramidum*, in the present study, could be supported by the highly significant increase in the total protein and the highly significant decrease in the total lipids in liver and muscle tissues of this species (Table 1) [31]. It is thus possibly reasonable to suppose that *E. pyramidum* is more active, energetic and adaptable in the desert habitat than *E. colubrinus*.

α-Est showed five isozymic forms fractions in *E. pyramidum*, while it showed only four isoforms in *E. colubrinus*. *α-Est-1* was the first clear, dense and thick isoform in *E. pyramidum* but it was completely absent in *E. colubrinus*. While the second isoform was revealed in *E. colubrinus*, it recorded only in three samples of the other species. The other isoforms; *α-Est-3*, *α-Est-4* and *α-Est-5* were dense and thick by the same extent in both *E. pyramidum* and *E. colubrinus* and also their relative front was nearly close to each other (Figure 3). The present results revealed the higher activity of *alfa-esterases* in the examined heart tissues of *E. pyramidum* than *E. colubrinus*. Esterases are used as bio-indicators to measure the toxic potency of pesticide and heavy metal residues usually applied in the field [20] [21]. The presence of the highly active esterase isoform; *α-Est-1* only in the heart tissue of *E. pyramidum* may reflect to some extent, the unsafety of the diet applied to this species of snake and its high ability to resist and accumulate the toxic residues in its body tissues than in *E. colubrinus*.

Table 1 recorded the mean and standard error values of total lipids and total protein in liver and muscle tissues of both *E. pyramidum* and *E. colubrinus*. While the total lipids showed a very highly significant increases

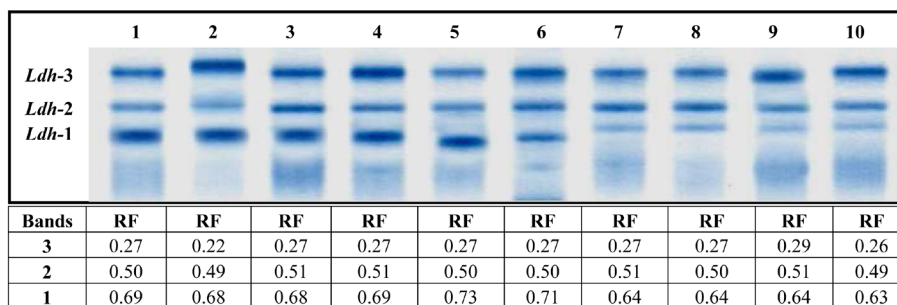


Figure 2. The electrophoretic profile of *Ldh* isoenzymes in liver tissues. Lanes are as follow: 1 - 5 (*E. pyramidum*), 6 - 10 (*E. colubrinus*).

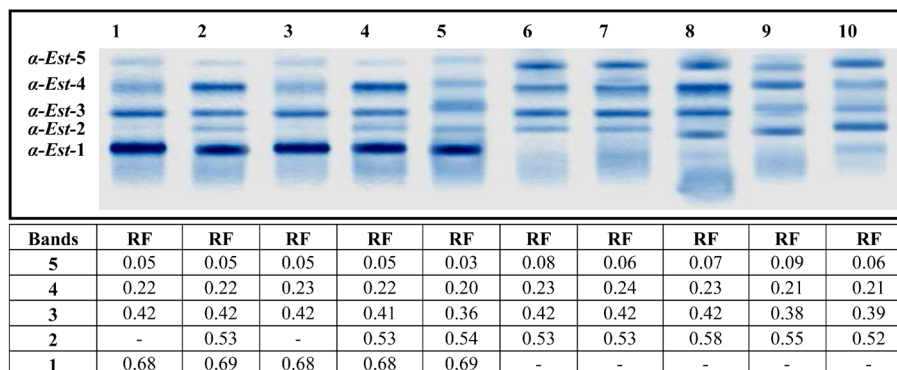


Figure 3. The electrophoretic profile of *α-Est* isoenzymes in the studied heart tissues. Lanes are as follow: 1 - 5 (*E. pyramidum*), 6 - 10 (*E. colubrinus*).

Table 1. Comparison of total lipids and total proteins in liver and muscle tissues of *E. pyramidum* and *E. colubrinus*. Data are expressed as mean \pm standard error. Number of individuals between parentheses.

Parameters	<i>E. pyramidum</i>	<i>E. colubrinus</i>	<i>t</i> -test
Liver total lipids (mg/100mg)	61.66 \pm 9.66 (5)	154.58 \pm 14.87 (5)	6.14 ^{***}
Thigh muscle total lipids (mg/100mg)	19.17 \pm 4.03 (5)	18.33 \pm 6.09 (5)	5.44 ^{***}
<i>t</i> -test	4.68 ^{**}	3.61 ^{***}	---
Liver total proteins (mg/100mg)	45.93 \pm 10.28 (5)	28.58 \pm 2.72 (5)	6.44 ^{***}
Thigh muscle total proteins (mg/100mg)	31.69 \pm 4.23 (5)	18.95 \pm 1.44 (5)	8.46 ^{***}
<i>t</i> -test	6.75 ^{***}	10.98 ^{***}	

^{**}Highly significant at $P < 0.01$, ^{***}Very highly significant at $P < 0.001$.

in liver ($P < 0.001$) and muscle ($P < 0.001$) tissues of *E. colubrinus* than in *E. pyramidum*, *E. pyramidum* recorded a very highly significant increases ($P < 0.001$) in the total protein in liver and muscle tissues than in *E. colubrinus*. Within each species, while total lipids and total protein were significantly higher in liver than in muscle tissues ($P < 0.01$, $P < 0.001$ respectively). In *E. pyramidum*, they revealed a very highly significant increase ($P < 0.001$) in liver than in muscle tissues in *E. colubrinus*.

5. Conclusion

In conclusion, *E. pyramidum* acquired high physiological performance and activity than *E. colubrinus*, where *Ldh* isoenzyme expression in the first species was higher than in the second. The accumulations of total lipids and total protein were also significantly higher in the first species than in the second. The present data also revealed a high activity of the esterase isoform, α -*Est*-1 only in the heart tissue of *E. pyramidum* which may reflect the high ability of *E. pyramidum* to resist and accumulate the toxic residues in its body tissues than in *E. colubrinus*.

Acknowledgements

We are grateful to Prof. Dr. Hany Hassan, professor at Animal Reproduction Research Institute for his technical support in conducting the practical part of isoenzyme assay in this work.

References

- [1] Vidal, N. and Hedges, S.B. (2009) The Molecular Evolutionary Tree of Lizards, Snakes, and Amphisbaenians. *Comptes Rendus Biologies*, **332**, 129-139. <http://dx.doi.org/10.1016/j.crv.2008.07.010>
- [2] Goodman, S.M. and Hobbs, J.J. (1994) The Distribution and Ethnobiology of Reptiles of the Northern Portion of the Egyptian Eastern Desert. *Journal of Ethnobiology*, **14**, 75-100.
- [3] Sayed, N.H.M. (2012) Genetic Diversity among Eight Egyptian Snakes (Squamata-Serpentes: Colubridae) Using RAPD-PCR. *Life Science Journal*, **9**, 423-430.
- [4] Zug, E.R., Vitt, L.J. and Caldwell, J.P. (2001) Herpetology: An Introductory Biology of Amphibians and Reptiles. Academic Press, New York.
- [5] Sayed, N.H.M. (2011) Genetic Diversity among Five Egyptian Non-Poisonous Snakes Using Protein and Isoenzymes Electrophoresis. *Life Science Journal*, **8**, 1034-1042.
- [6] Dowling, H.E., Hass, C.A., Hedges, S.B. and Highton, R. (1996) Snake Relationships Revealed by Slow-Evolving Total Protein: A Preliminary Survey. *Journal of Zoology*, **240**, 1-28. <http://dx.doi.org/10.1111/j.1469-7998.1996.tb05482.x>
- [7] Lawson, R., Slowinski, J.B., Crother, B.I. and Burbrink, F.T. (2005) Phylogeny of the Colubroidea (Serpentes): New Evidence from Mitochondrial and Nuclear genes. *Molecular Phylogenetics and Evolution*, **37**, 581-601. <http://dx.doi.org/10.1016/j.ympev.2005.07.016>
- [8] Burbrink, F.T. and Pyron, R.A. (2008) The Taming of the Skew: Estimating Proper Confidence Intervals for Divergence Dates. *Systematic Biology*, **57**, 317-328. <http://dx.doi.org/10.1080/10635150802040605>

- [9] Wiens, J.J., Kuczynski, C.A., Smith, S.A., Mulcahy, D.E., Sites Jr., J.W., Townsend, T.M. and Reeder, T.W. (2008) Branch Lengths, Support, and Congruence: Testing the Phylogenomic Approach with 20 Nuclear Loci in Snakes. *Systematic Biology*, **57**, 420-431. <http://dx.doi.org/10.1080/10635150802166053>
- [10] Kelly, C.M.R., Barker, N.P., Villet, M.H. and Broadley, D.E. (2009) Phylogeny, Biogeography and Classification of the Snake Superfamily Elapoidea: A Rapid Radiation in the Late Eocene. *Cladistics*, **25**, 38-63. <http://dx.doi.org/10.1111/j.1096-0031.2008.00237.x>
- [11] Vidal, N., Rage, J.C., Couloux, A. and Hedges, S.B. (2009) Snakes (Serpentes). In: Hedges, S.B. and Kumar, S., Eds., *The Time Tree of Life*, Oxford University Press, New York, 390-397.
- [12] Zaher, H., Grazziotin, F.E., Cadle, J.E., Murphy, R.W., Moura-Leite, J.C. and Bonatto, S.L. (2009) Molecular Phylogeny of Advanced Snakes (Serpentes, Caenophidia) with an Emphasis on South American Xenodontines: A Revised Classification and Descriptions of New Taxa. *Papéis Avulsos de Zoologia*, **49**, 115-153. <http://dx.doi.org/10.1590/S0031-10492009001100001>
- [13] Pyron, R.A., Burbrink, F.T., Colli, E.R., de Oca, A.N.M., Vitt, L.J., Kuczynski, C.A. and Wiens, J.J. (2011) The Phylogeny of Advanced Snakes (Colubroidea), with Discovery of a New Subfamily and Comparison of Support Methods for Likelihood Trees. *Molecular Phylogenetics and Evolution*, **58**, 329-342. <http://dx.doi.org/10.1016/j.ympev.2010.11.006>
- [14] Mallow, D., Ludwig, D. and Nilson, E. (2003) True Vipers: Natural History and Toxinology of Old World Vipers. Krieger Publishing Company, Malabar, 359 p.
- [15] McDiarmid, R.W., Campbell, J.A. and Touré, T. (1999) Snake Species of the World: A Taxonomic and Geographic Reference, Volume 1. Herpetologists' League, Washington, District of Columbia, 511 p.
- [16] Mehrtens, J.M. (1987) Living Snakes of the World in Color. Sterling Publishers, New York, 480 p.
- [17] Zuckerkandl, E. and Pauling, L. (1965) Evolutionary Divergence and Convergence in Total Protein. In: Bryson, V. and Vogel, H.J., Eds., *Evolving Genes and Total Protein*, Academic Press, New York, 97-166.
- [18] Lewontin, R.C. (1974) The Genetic Basis of Evolutionary Change. Columbia University Press, New York.
- [19] Kimura, M. (1983) The Neutral Theory of Molecular Evolution. Cambridge University Press, Cambridge. <http://dx.doi.org/10.1017/CBO9780511623486>
- [20] Al-Harbi, M.S. and Amer, S.A.M. (2012) Comparison of Energy-Related Isoenzymes between Production and Racing Arabian Camels. *Advances in Bioscience and Biotechnology*, **3**, 1124-1128. <http://dx.doi.org/10.4236/abb.2012.38138>
- [21] Shahjahan, R.M., Karim, A., Begum, R.A., Alam, M.S. and Begum, A. (2008) Tissue Specific Esterase Isozyme Banding Pattern in Nile Tilapia (*Oreochromis niloticus*). *Universal Journal of Zoology (Rajshahi University)*, **27**, 1-5.
- [22] El Din, M.B. (2006) A Guide to Reptiles and Amphibians of Egypt. American University in Cairo Press, Cairo, 359 p.
- [23] Maurer, R. (1968) Disk Electrophorese. W. de Gruyter and Co., Berlin, 222 p.
- [24] Shaw, C.R. and Prasad, R. (1970) Starch Gel Electrophoresis of Enzymes: A Compilation of Recipes. *Biochemistry and Genetics*, **4**, 297-329. <http://dx.doi.org/10.1007/BF00485780>
- [25] Mulvey, M. and Vrijenhoek, R.C. (1981) Genetic Variation among Laboratory Strains of the Planorbid Snail *Biomphalaria glabrata*. *Biochemical Genetics*, **19**, 1169-1182. <http://dx.doi.org/10.1007/BF00484572>
- [26] Jonathan, F.W. and Wendel, N.F. (1990) Visualization and Interpretation of Plant Isozymes. In: Soltis, D.E. and Soltis, P.S., Eds., *Isozymes in Plant Biology*, Chapman and Hall, London, 5-45.
- [27] Scandaliojs, G. (1964) Tissue-Specific Isozyme Variations in Maize. *Journal of Heredity*, **55**, 281-285.
- [28] Shaklee, J.B., Allendorf, F.W., Morizot, D.C. and Whitt, G.S. (1990) Gene Nomenclature for Protein Coding Loci in Fish. *Transactions of the American Fisheries Society*, **119**, 2-15. [http://dx.doi.org/10.1577/1548-8659\(1990\)119<0002:GNFPLI>2.3.CO;2](http://dx.doi.org/10.1577/1548-8659(1990)119<0002:GNFPLI>2.3.CO;2)
- [29] Zöllner, N. and Kirsch, K. (1962) Colorimetric Method for Determination of Total Lipids. *Journal of Experimental Medicine*, **135**, 545-550. <http://dx.doi.org/10.1007/BF02045455>
- [30] Gornall, A.G., Bardawill, C.J. and David, M.M. (1949) Determination of Serum Proteins by Means of the Biuret Reaction. *Journal of Biological Chemistry*, **177**, 751-766.
- [31] Kadry, M.A.M. and Mohamad, H.R.H. (2014) Genetic and Metabolic Variability between Two Subspecies of *Chamaeleo chamaeleon* (Reptilia: Chamaeleonidae) in Egypt. *Advances in Bioscience and Biotechnology*, **5**, 699-703. <http://dx.doi.org/10.4236/abb.2014.58083>