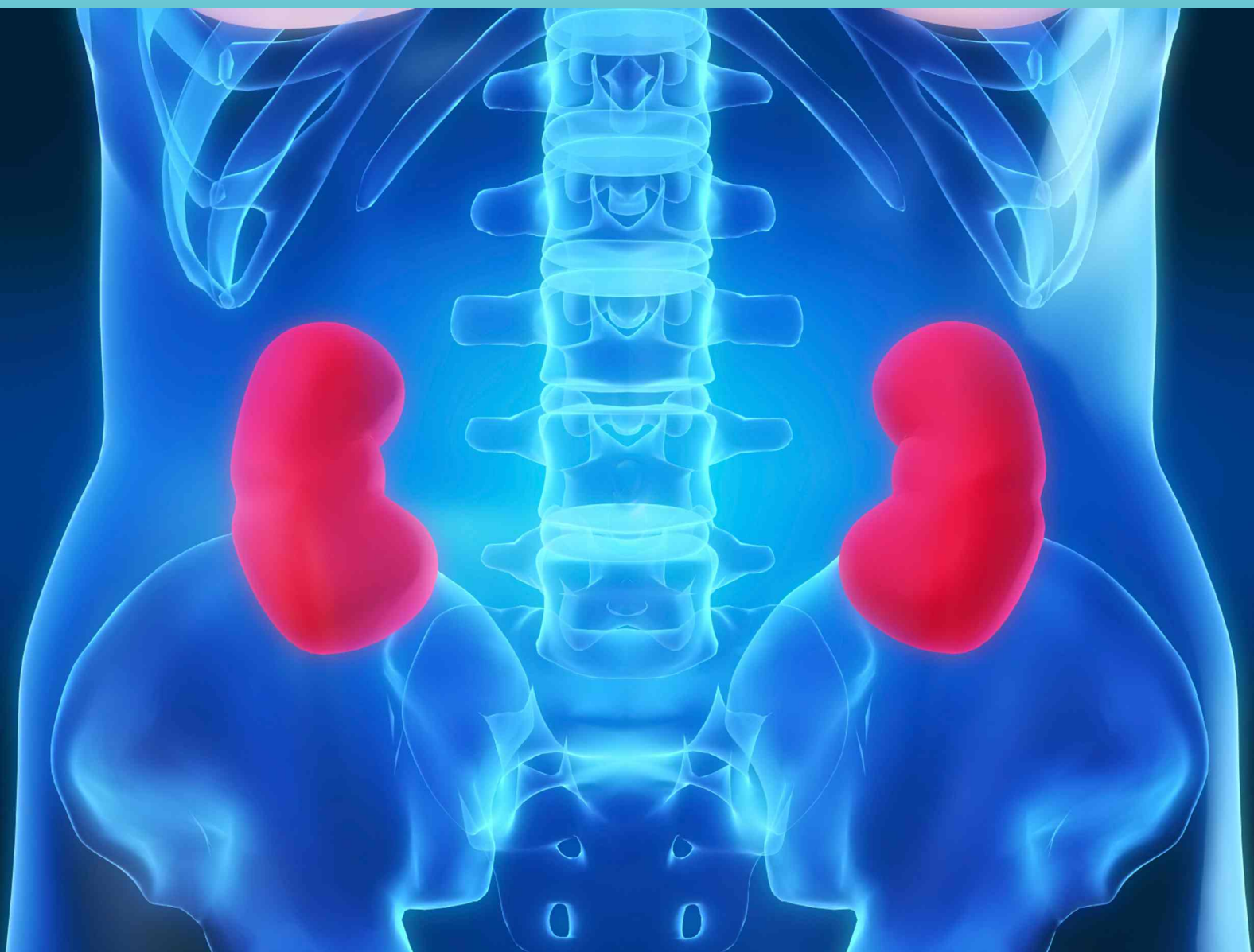


ISSN: 2165-7424 Volume 3, Number 5, September 2013



Open Journal of Endocrine and Metabolic Diseases



ISSN: 2165-7424



www.scirp.org/journal/ojemd

Journal Editorial Board

ISSN Print: 2165-7424 ISSN Online: 2165-7432

<http://www.scirp.org/journal/ojemd>

Editorial Board

Prof. Khalid Esmat Allam	Ainshams University, Egypt
Prof. Belinda R. Beck	Griffith University, Australia
Dr. Chong-Chi Chiu	Chi-Mei Medical Center, Chinese Taipei
Prof. Fernando Cordido	University of A Coruña, Spain
Dr. Zhongquan Dai	China Astronaut Research and Training Center, China
Dr. Sanjay K. Gupta	Sebha University, Libya
Dr. Arumugam Radhakrishnan Jayakumar	University of Miami, USA
Dr. Li Ji	State University of New York, USA
Dr. Udaya M. Kabadi	VA Medical Center, USA
Prof. Mehtap Malkoç	Dokuz Eylul University, Turkey
Prof. Mohammad Reza Movahed	University of Arizona College of Medicine, USA
Prof. Kei Nakajima	Josai University, Japan
Dr. Khue Vu Nguyen	University of California, USA
Prof. Lawrence C. Perlmutter	Rosalind Franklin University of Medicine, USA
Dr. Wen-Jun Shen	Stanford University, USA
Dr. Weiwei Song	Temple University School of Medicine, USA
Prof. Yuh-Min Song	Taichung Veterans General Hospital, Chinese Taipei
Dr. Qing Wu	Mayo Clinic, USA

TABLE OF CONTENTS

Volume 3 Number 5

September 2013

Primary Hypothyroidism: Presence of Central Adiposity and Its Improvement on Attaining Euthyroid State with L-Thyroxine

R. A. Esmail, R. E. Hinrichs, U. M. Kabadi.....241

Insulin-Like Growth Factor-1 and Osteocalcin Are Correlated with Markers of Osteoporosis in Postmenopausal Women with Type-2 Diabetes

M. A. Kamel, M. H. Helmy, A. N. A. Rayah, N. Mohannad, H. M. N. Hania.....245

Amelioration of Albuminuria in Japanese Type 2 Diabetic Patients by Maximal Dose of Candesartan

Y. Oikawa, A. Shimada, M. Kyo.....252

Open Journal of Endocrine and Metabolic Diseases (OJEMD)

Journal Information

SUBSCRIPTIONS

Open Journal of Endocrine and Metabolic Diseases (Online at Scientific Research Publishing, www.SciRP.org) is published monthly by Scientific Research Publishing, Inc., USA.

Subscription rates:

Print: \$59 per issue.

To subscribe, please contact Journals Subscriptions Department, E-mail: sub@scirp.org

SERVICES

Advertisements

Advertisement Sales Department, E-mail: service@scirp.org

Reprints (minimum quantity 100 copies)

Reprints Co-ordinator, Scientific Research Publishing, Inc., USA.

E-mail: sub@scirp.org

COPYRIGHT

Copyright©2013 Scientific Research Publishing, Inc.

All Rights Reserved. No part of this publication may be reproduced, stored in a retrieval system, or transmitted, in any form or by any means, electronic, mechanical, photocopying, recording, scanning or otherwise, except as described below, without the permission in writing of the Publisher.

Copying of articles is not permitted except for personal and internal use, to the extent permitted by national copyright law, or under the terms of a license issued by the national Reproduction Rights Organization.

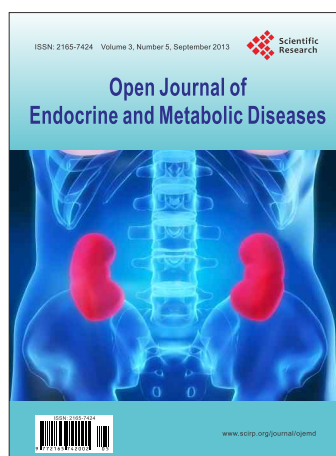
Requests for permission for other kinds of copying, such as copying for general distribution, for advertising or promotional purposes, for creating new collective works or for resale, and other enquiries should be addressed to the Publisher.

Statements and opinions expressed in the articles and communications are those of the individual contributors and not the statements and opinion of Scientific Research Publishing, Inc. We assume no responsibility or liability for any damage or injury to persons or property arising out of the use of any materials, instructions, methods or ideas contained herein. We expressly disclaim any implied warranties of merchantability or fitness for a particular purpose. If expert assistance is required, the services of a competent professional person should be sought.

PRODUCTION INFORMATION

For manuscripts that have been accepted for publication, please contact:

E-mail: ojemd@scirp.org



Call for Papers

Open Journal of Endocrine and Metabolic Diseases

ISSN 2165-7424 (print) ISSN 2165-7432 (online)

www.scirp.org/journal/ojemd

Open Journal of Endocrine and Metabolic Diseases (OJEMD) is an international journal dedicated to the latest advancement of endocrine and metabolic diseases. The goal of this journal is to provide a platform for scientists and academicians all over the world to promote, share, and discuss various new issues and developments in different areas of endocrine and metabolic diseases.

Editorial Board

Prof. Khalid Esmat Allam
 Prof. Belinda R. Beck
 Dr. Chong-Chi Chiu
 Prof. Fernando Cordido
 Dr. Zhongquan Dai
 Dr. Sanjay K. Gupta
 Dr. Arumugam Radhakrishnan Jayakumar
 Dr. Li Ji
 Dr. Udaya M. Kabadi
 Prof. Mehtap Malkoç
 Prof. Mohammad Reza Movahed
 Prof. Kei Nakajima
 Dr. Khue Vu Nguyen
 Prof. Lawrence C. Perlmuter
 Dr. Wen-Jun Shen
 Dr. Weiwei Song
 Prof. Yuh-Min Song
 Dr. Qing Wu

Ainshams University, Egypt
 Griffith University, Australia
 Chi-Mei Medical Center, Chinese Taipei
 University of A Coruña, Spain
 China Astronaut Research and Training Center, China
 Sebha University, Libya
 University of Miami, USA
 State University of New York, USA
 VA Medical Center, USA
 Dokuz Eylul University, Turkey
 University of Arizona College of Medicine, USA
 Josai University, Japan
 University of California, USA
 Rosalind Franklin University of Medicine, USA
 Stanford University, USA
 Temple University School of Medicine, USA
 Taichung Veterans General Hospital, Chinese Taipei
 Mayo Clinic, USA

All manuscripts must be prepared in English, and are subject to a rigorous and fair peer-review process. Accepted papers will immediately appear online followed by printed hard copy. The journal publishes original papers including but not limited to the following fields:

- Bone and Mineral Metabolism
- Cell Metabolism
- Clinical Endocrinology
- Clinical Nutrition and Metabolism
- Dermato-Endocrinology
- Diabetes Mellitus
- Diabetes, Obesity and Metabolism
- Diabetology and Metabolic Syndrome
- Diseases of the Pancreas
- Drug Metabolism & Toxicology
- Endocrine & Metabolic Disorders
- Endocrine Disorders
- Endocrine Pathology
- Inherited Metabolic Disease
- Metabolic Brain Disease
- Metabolic Engineering
- Metabolomics
- Molecular and Cellular Endocrinology
- Molecular Genetics and Metabolism
- Neuroendocrinology
- Nutrition, Metabolism and Cardiovascular Diseases
- Pediatric Endocrinology
- Psychoneuroendocrinology
- Reproductive Biology and Endocrinology

We are also interested in: 1) Short reports—2-5 page papers where an author can either present an idea with theoretical background but has not yet completed the research needed for a complete paper or preliminary data; 2) Book reviews—Comments and critiques.

Website and E-mail

<http://www.scirp.org/journal/ojemd>

E-mail: ojemd@scirp.org