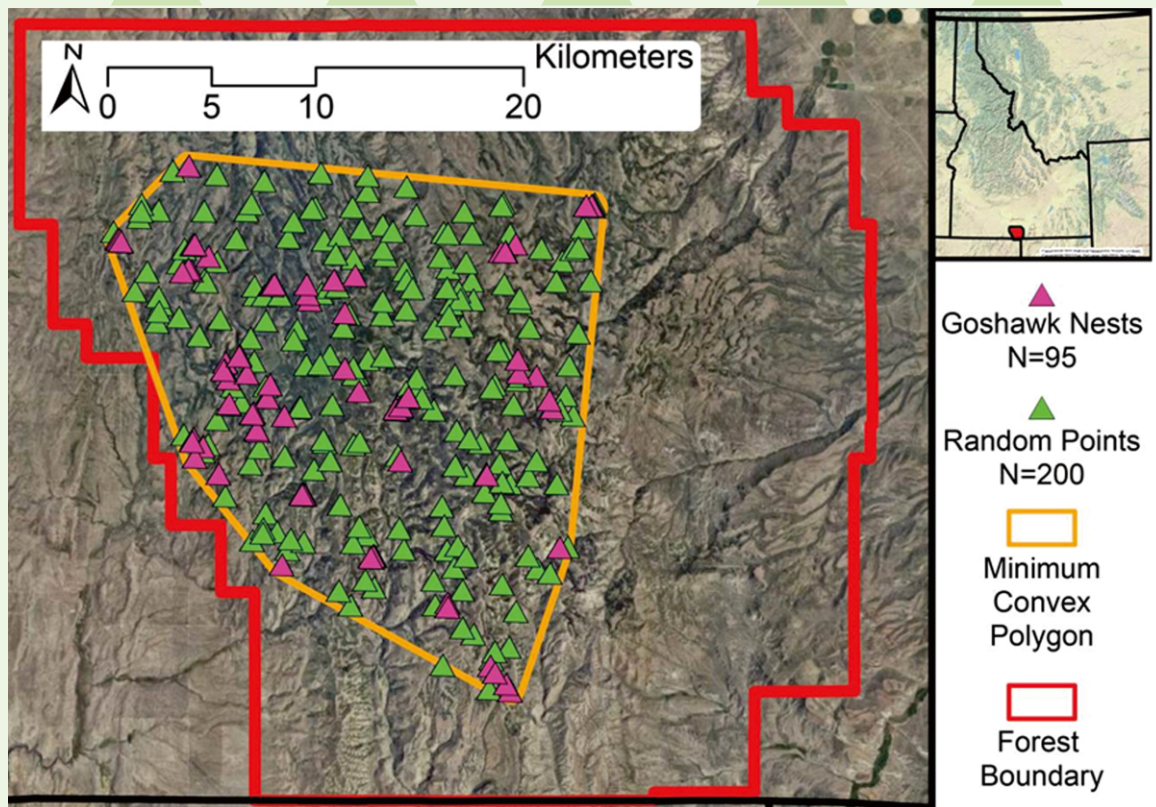


# Open Journal of Ecology



ISSN: 2162-1985



[www.scirp.org/journal/oje](http://www.scirp.org/journal/oje)

# Journal Editorial Board

ISSN: 2162-1985 (Print) ISSN: 2162-1993 (Online)

<http://www.scirp.org/journal/oje>

---

## Editor in Chief

**Dr. Victor R. Savage**

National University of Singapore, Singapore

## Editorial Board (According to Alphabet)

<b>Dr. Mikel A. Becerro</b>	Spanish Scientific Research Council, Spain
<b>Dr. Rituparna Bose</b>	The City University of New York, USA
<b>Dr. Paolo Censi</b>	University of Palermo, Italy
<b>Prof. Baoshan Cui</b>	Beijing Normal University, China
<b>Prof. Kartlos J. Kachiashvili</b>	GC University Lahore, Pakistan
<b>Dr. Douglas D. Kane</b>	Defiance College, USA
<b>Prof. A. D. Karathanasis</b>	University of Kentucky, USA
<b>Prof. Pascal Laffaille</b>	Institut National Polytechnique de Toulouse, France
<b>Dr. Sang Don Lee</b>	Ewha Womans University, South Korea
<b>Prof. María R. M. Losada</b>	Universidade de Santiago de Compostela, Spain
<b>Prof. Korpela K. Mikael</b>	University of Tampere, Finland
<b>Dr. Richard Munang</b>	United Nations Environment Programme, USA
<b>Prof. Francisco J. Rodríguez-Tovar</b>	University of Granada, Spain
<b>Prof. George Oliver Rogers</b>	Texas A&M University, USA
<b>Prof. Subramanya S. S. Sarma</b>	National Autonomous University of Mexico, Mexico
<b>Prof. Miklas Scholz</b>	The University of Salford, UK
<b>Dr. Qianlai Zhuang</b>	Purdue University, USA

## TABLE OF CONTENTS

### Volume 3, Number 2, May 2013

<b>A study of using grey system theory and artificial neural network on the climbing ability of <i>Buergeria robusta</i> frog</b>	
Y.-H. Chang, T.-F. Chuang.....	83
<b>Seasonal comparison of aquatic macroinvertebrate assemblages in a flooded coastal freshwater marsh</b>	
S.-R. Kang, S. L. King.....	94
<b>Trace metals in <i>Posidonia oceanica</i> in a coastal area of the Ionian Sea (Calabria, Italy)</b>	
R. Cozza, A. Iaquina, D. Cozza, L. Ruffolo.....	102
<b>Predicting nesting habitat of Northern Goshawks in mixed aspen-lodgepole pine forests in a high-elevation shrub-steppe dominated landscape</b>	
R. A. Miller, J. D. Carlisle, M. J. Bechard, D. Santini.....	109
<b>Seasonal nekton assemblages in a flooded coastal freshwater marsh, Southwest Louisiana, USA</b>	
S.-R. Kang, S. L. King.....	116
<b>Estimating plant crown transpiration and water use efficiency by vegetative reflectance indices associated with chlorophyll fluorescence</b>	
H. Furuuchi, M. W. Jenkins, R. S. Senock, J. L. J. Houpis, J. C. Pushnik.....	122
<b>What elk, wolves and caterpillars have in common—The perfect forager theorem</b>	
P. Weclaw, R. J. Hudson.....	133
<b>Modification of soil properties by <i>Prosopis</i> L. in the Kalahari Desert, South-Western Botswana</b>	
S. Mosweu, C. Muniyati, T. Kabanda.....	145
<b>Seasonal patterns of light availability and light use of broadleaf evergreens in a deciduous forest understory: Potential mechanisms for expansion</b>	
S. A. Shiflett, J. C. Zinnert, D. R. Young.....	151
<b>Parental care in the freshwater crab <i>Sylviocarcinus pictus</i> (Milne-Edwards, 1853)</b>	
B. S. Sant'Anna, E. L. H. Takahashi, G. Y. Hattori.....	161
<b>Effects of temperature and resource abundance on small- and large-bodied cladocerans: Community stability and species replacement</b>	
I. Yu. Feniova, A. L. Palash, V. I. Razlutskiy, A. R. Dzialowski.....	164
<b>Seabirds in the Bay of Bengal large marine ecosystem: Current knowledge and research objectives</b>	
R. Mondreti, P. Davidar, C. Péron, D. Grémillet.....	172
<b>Costs of glucosinolates in <i>Brassica rapa</i>: Are they context dependent?</b>	
K. A. Stowe, C. G. Hochwender, K. Fleck, N. Duvall, D. Lewkiewicz, S. Trimble, S. Peters.....	185
<b>A theoretical framework for investigating ecological problems associated with biodiversity conservation in national parks: A case of the Rwenzori Mountains National Park, Uganda</b>	
M. Muhumuza, M. Sanders, K. Balkwill.....	196
<b>Vegetation communities in estuarine tidal flats in the different river and basin environments of the four major rivers of Ise Bay (Suzuka, Tanaka, Kushida and Miya), Mie Prefecture, Japan</b>	
K. Kaneko, S. Nohara.....	205

The figure on the front cover is from the article published in Open January of Ecology, 2013, Vol. 3, No. 2, pp. 109-115 by Robert A. Miller, Jay D. Carlisle, Marc J. Bechard and Dena Santini.

# Open Journal of Ecology (OJE)

## Journal Information

### SUBSCRIPTIONS

The *Open Journal of Ecology* (Online at Scientific Research Publishing, [www.SciRP.org](http://www.SciRP.org)) is published quarterly by Scientific Research Publishing, Inc., USA.

#### Subscription rates:

Print: \$59 per issue.

To subscribe, please contact Journals Subscriptions Department, E-mail: [sub@scirp.org](mailto:sub@scirp.org)

### SERVICES

#### Advertisements

Advertisement Sales Department, E-mail: [service@scirp.org](mailto:service@scirp.org)

#### Reprints (minimum quantity 100 copies)

Reprints Co-ordinator, Scientific Research Publishing, Inc., USA.

E-mail: [sub@scirp.org](mailto:sub@scirp.org)

### COPYRIGHT

Copyright©2013 Scientific Research Publishing, Inc.

All Rights Reserved. No part of this publication may be reproduced, stored in a retrieval system, or transmitted, in any form or by any means, electronic, mechanical, photocopying, recording, scanning or otherwise, except as described below, without the permission in writing of the Publisher.

Copying of articles is not permitted except for personal and internal use, to the extent permitted by national copyright law, or under the terms of a license issued by the national Reproduction Rights Organization.

Requests for permission for other kinds of copying, such as copying for general distribution, for advertising or promotional purposes, for creating new collective works or for resale, and other enquiries should be addressed to the Publisher.

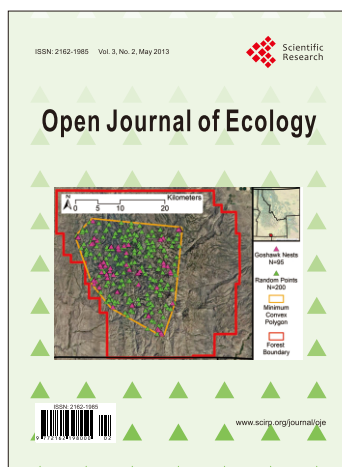
Statements and opinions expressed in the articles and communications are those of the individual contributors and not the statements and opinion of Scientific Research Publishing, Inc. We assume no responsibility or liability for any damage or injury to persons or property arising out of the use of any materials, instructions, methods or ideas contained herein. We expressly disclaim any implied warranties of merchantability or fitness for a particular purpose. If expert assistance is required, the services of a competent professional person should be sought.

### PRODUCTION INFORMATION

For manuscripts that have been accepted for publication, please contact:

E-mail: [oje@scirp.org](mailto:oje@scirp.org)





**Call for Papers**

# Open Journal of Ecology (OJE)

ISSN: 2162-1985 (Print) ISSN: 2162-1993 (Online)  
<http://www.scirp.org/journal/oje>

**Open Journal of Ecology (OJE)** is an international journal dedicated to the latest advancement of ecology. The goal of this journal is to provide a platform for scientists and academicians all over the world to promote, share, and discuss various new issues and perspectives in diverse areas of ecology and to keep a record of state-of-the-art research.

## Subject Coverage

The journal publishes original papers including but not limited to the following subfields:

- Animal Ecology
- Aquatic Ecosystem
- Autecology
- Biogeochemistry
- Community Ecology
- Cultural Ecology
- Ecological Design
- Ecological Effectiveness
- Ecological Impact of Climate Changes
- Ecosystem Services
- Environmental Ecology
- Evolutionary Ecology
- Human Ecology
- Industrial Ecology
- Landscape Ecology
- Marine Ecology
- Microbial Ecology
- Molecular Ecology
- Physiological Ecology
- Plant Ecology
- Population Ecology
- Resource Valuation
- Terrestrial Ecosystem

We are also interested in: 1) Short Reports—2-5 page papers where an author can either present an idea with theoretical background but has not yet completed the research needed for a complete paper or preliminary data; 2) Book Reviews—Comments and critiques.

## Notes for Intending Authors

Submitted papers should not have been previously published nor be currently under consideration for publication elsewhere. Paper submission will be handled electronically through the website. All papers are refereed through a peer review process. For more details about the submissions, please access the website.

## Website and E-Mail

<http://www.scirp.org/journal/oje> E-mail: [oje@scirp.org](mailto:oje@scirp.org)

## What is SCIRP?

Scientific Research Publishing (SCIRP) is one of the largest Open Access journal publishers. It is currently publishing more than 200 open access, online, peer-reviewed journals covering a wide range of academic disciplines. SCIRP serves the worldwide academic communities and contributes to the progress and application of science, by delivering superior scientific publications and scientific information solution provider that enable advancement in scientific research.

## What is Open Access?

All original research papers published by SCIRP are made freely and permanently accessible online immediately upon publication. To be able to provide open access journals, SCIRP defrays operation costs from authors and subscription charges only for its printed version. Open access publishing allows an immediate, world-wide, barrier-free, open access to the full text of research papers, which is in the best interests of the scientific community.

- High visibility for maximum global exposure with open access publishing model
- Rigorous peer review of research papers
- Prompt faster publication with less cost
- Guaranteed targeted, multidisciplinary audience



**Website: <http://www.scirp.org>**  
**Subscription: [sub@scirp.org](mailto:sub@scirp.org)**  
**Advertisement: [service@scirp.org](mailto:service@scirp.org)**