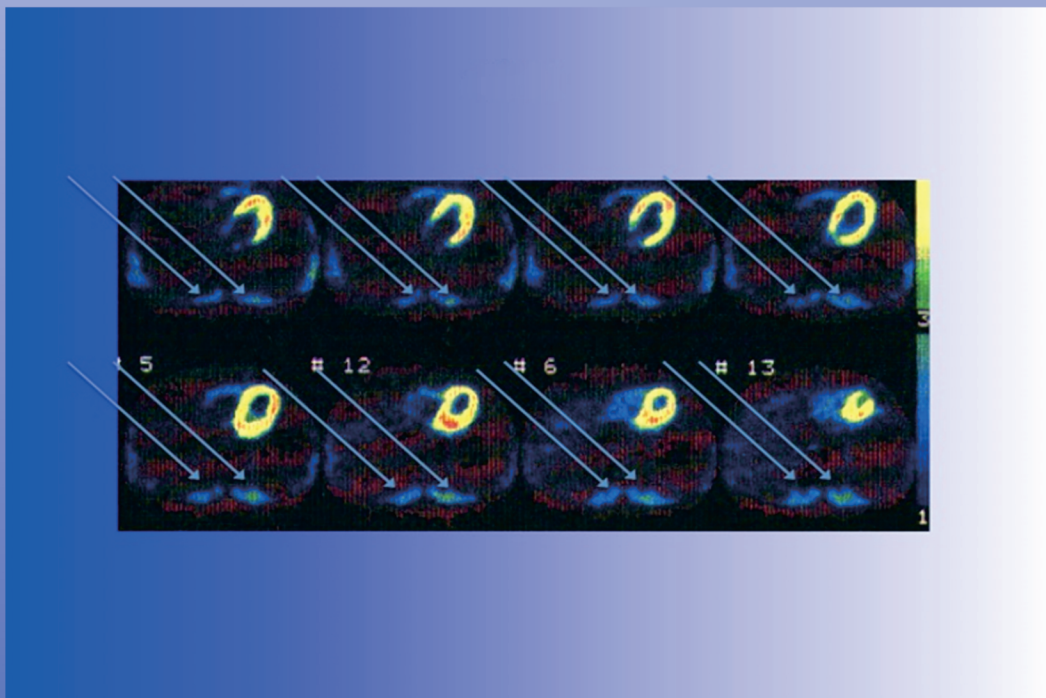


JB i S E

Journal of **B**iomedical
Science and **E**ngineering



Editor-in-Chief
Kuo-Chen Chou

www.scirp.org/journal/jbise

Journal of Biomedical Science and Engineering (JBISE)

Journal Information

SUBSCRIPTIONS

The *Journal of Biomedical Science and Engineering* (Online at Scientific Research Publishing, www.SciRP.org) is published monthly by Scientific Research Publishing, Inc., USA.

Subscription rates:

Print: \$79 per issue.

To subscribe, please contact Journals Subscriptions Department, E-mail: sub@scirp.org

SERVICES

Advertisements

Advertisement Sales Department, E-mail: service@scirp.org

Reprints (minimum quantity 100 copies)

Reprints Co-ordinator, Scientific Research Publishing, Inc., USA.

E-mail: sub@scirp.org

COPYRIGHT

Copyright©2013 Scientific Research Publishing, Inc.

All Rights Reserved. No part of this publication may be reproduced, stored in a retrieval system, or transmitted, in any form or by any means, electronic, mechanical, photocopying, recording, scanning or otherwise, except as described below, without the permission in writing of the Publisher.

Copying of articles is not permitted except for personal and internal use, to the extent permitted by national copyright law, or under the terms of a license issued by the national Reproduction Rights Organization.

Requests for permission for other kinds of copying, such as copying for general distribution, for advertising or promotional purposes, for creating new collective works or for resale, and other enquiries should be addressed to the Publisher.

Statements and opinions expressed in the articles and communications are those of the individual contributors and not the statements and opinion of Scientific Research Publishing, Inc. We assume no responsibility or liability for any damage or injury to persons or property arising out of the use of any materials, instructions, methods or ideas contained herein. We expressly disclaim any implied warranties of merchantability or fitness for a particular purpose. If expert assistance is required, the services of a competent professional person should be sought.

PRODUCTION INFORMATION

For manuscripts that have been accepted for publication, please contact:

E-mail: jbise@scirp.org

TABLE OF CONTENTS

Volume 6, Number 2, February 2013

A study on the activity of dermal multipotent stem cells in initiation of wound repair J. F. Qu, T. M. Cheng, Y. P. Su, C. M. Shi, W. Sun.....	109
How should we assess the mechanical properties of lower-limb prosthesis technology used in elite sport?—An initial investigation B. Dyer, P. Sewell, S. Noroozi.....	116
Monitoring vascular changes induced by photodynamic therapy using contrast-enhanced micro-computed tomography O. C. Nasui, S. K. Bisland, N. L. Ford.....	124
Spatial perturbation with synthetic protein scaffold reveals robustness of asymmetric cell division J. H. Li, P. C. Bu, K.-Y. Chen, X. L. Shen.....	134
Heart and skeletal muscle insulin resistance but not myocardial blood flow reserve could be related to chronic use of thiazolidione in patients with type-2 diabetes I. Yokoyama, T. Moritan, Y. Inoue.....	144
Processing obstructive sleep apnea syndrome (OSAS) data R. S. Tung, W. Y. Leong.....	152
Novel algorithms for accurate DNA base-calling O. G. Mohammed, K. T. Assaleh, G. A. Hussein, A. F. Majdalawieh, S. R. Woodward.....	165
Micro-computed tomography assessment of human femoral trabecular bone for two disease groups (fragility fracture and coxarthrosis): Age and gender related effects on the microstructure A. C. Vale, M. F. C. Pereira, A. Maurício, B. Vidal, A. Rodrigues, J. Caetano-Lopes, A. Nazarian, J. E. Fonseca, H. Canhão, M. F. Vaz.....	175
Effects of dietary CoQ₁₀ and α-lipoic acid on CoQ₁₀ levels in plasma and tissues of eggs laying hens P. J. Krizman, A. Smidovnik, A. G. Wondra, M. Krizman, M. Prosek.....	185
Diffusion tensor tractography of the arcuate fasciculus in patients with brain tumors: Comparison between deterministic and probabilistic models Z. X. Li, K. K. Peck, N. P. Brennan, M. Jenabi, M. Hsu, Z. G. Zhang, A. I. Holodny, R. J. Young.....	192
Measurement of lumbar muscle glucose utilization rate can be as useful in estimating skeletal muscle insulin resistance as that of thigh muscle I. Yokoyama, T. Moritan, Y. Inoue.....	201

The figure on the front cover is from the article published in Journal Biomedical Science and Engineering, 2013, Vol. 6, No. 2, pp. 201-208 by Ikuo Yokoyama, Toshiyuki Moritan and Yusuke Inoue.