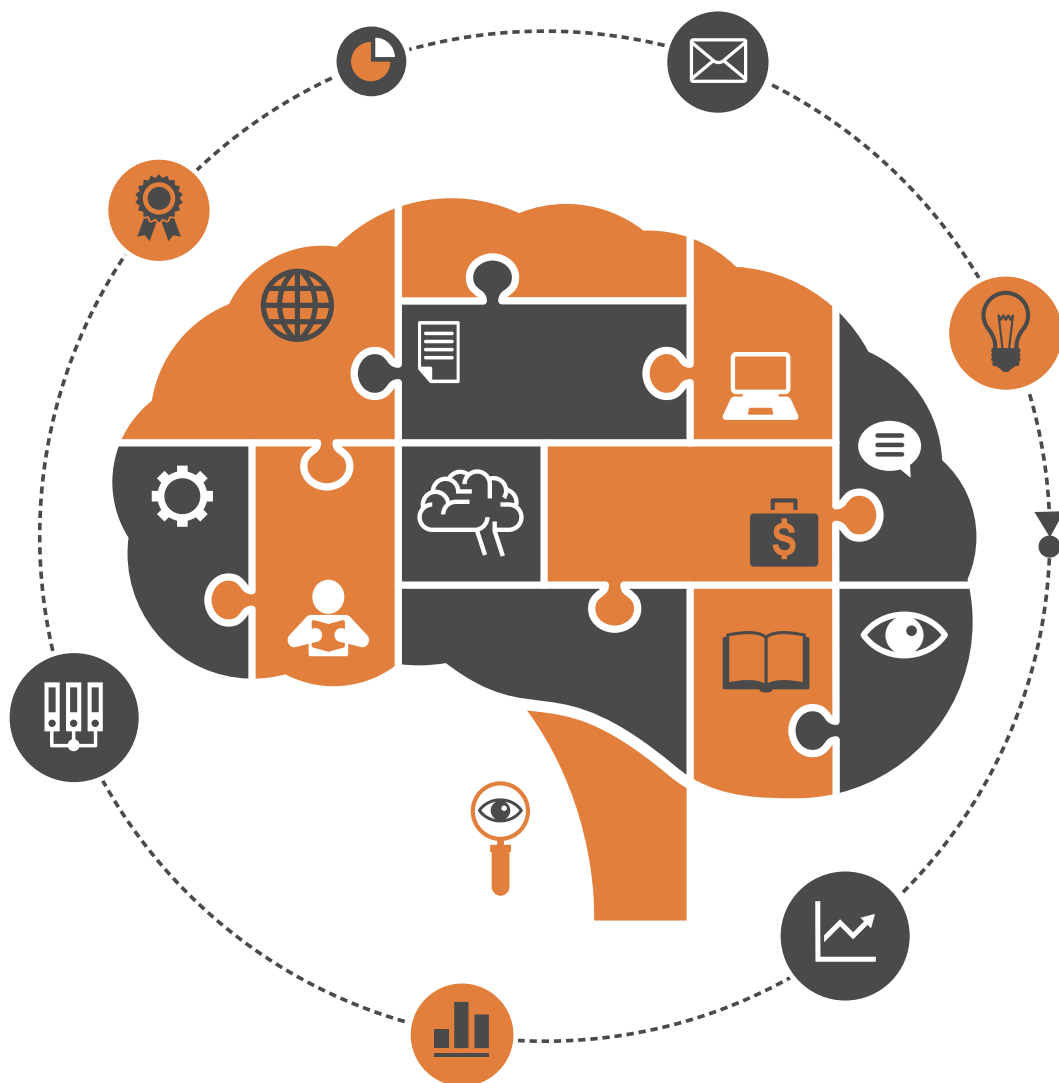


ISSN: 2152-7180

Volume 11, Number 1, January 2020



Psychology



ISSN: 2152-7180



<https://www.scirp.org/journal/psych>

Journal Editorial Board

ISSN Print: 2152-7180 ISSN Online: 2152-7199

<https://www.scirp.org/journal/psych>

Editorial Board

Dr. Ruggero Andrisano-Ruggieri	University of Salerno, Italy
Dr. Yoram Bar-Tal	Tel-Aviv University, Israel
Prof. Adital Ben-Ari	University of Haifa, Israel
Prof. Sefa Bulut	Ibn Haldun University, Turkey
Prof. Matthew C. Costello	Indiana University South Bend, USA
Dr. Jay R. Elliott	Yale University, USA
Dr. Thomas Vincent Frederick	California Baptist University, USA
Prof. Jay Friedenberg	Manhattan College, USA
Prof. George Kyriacou Georgiou	University of Alberta, Canada
Dr. David M. Goodman	Harvard Medical School, USA
Dr. Hong Jiao	University of Maryland, USA
Dr. Michelle Y. Kibby	Southern Illinois University, USA
Prof. Kenneth A. Kiewra	University of Nebraska-Lincoln, USA
Prof. Beth Kurtz-Costes	University of North Carolina, USA
Dr. Giovanni Laviola	Italian National Institute of Health, Italy
Prof. Yang Lee	Gyeongsang National University, South Korea
Dr. Katerina Maniadaki	Technological Educational Institution, Greece
Prof. Tim F. McLaughlin	Gonzaga University, USA
Dr. John T. Mitchell	Duke University, USA
Dr. Melodee Mograss	McGill University, Canada
Dr. Ora Nakash	Interdisciplinary Center (IDC) Herzliya, Israel
Dr. Raffaella Nori	University of Bologna, Italy
Dr. Jennifer Kim Plybon Penberthy	University of Virginia School of Medicine, USA
Dr. So-Jung Seo	Kyung Hee University, South Korea
Prof. Tuomo Antero Takala	University of Jyväskylä, Finland
Dr. Kasım Tatlıhoğlu	Bingöl University, Turkey
Prof. Massimiliano Versace	Boston University, USA
Prof. Edda Weigand	University of Münster, Germany
Dr. Berney J. Wilkinson	Webster International University, USA
Dr. Patricia Gail Williams	University of Louisville, USA
Dr. Hui-Ching Wu	National Taiwan University, Chinese Taipei
Prof. Wengang Yin	Chinese Academy of Sciences, China

Table of Contents

Volume 11 Number 1

January 2020

Relationship between Personality Traits and Constituent Factors in Impressions of Public Service: Impressions of City Office Staff as a Case Study

F. Kishida, Y. Egashira, M. Motoi, K. Okusa, H. Noto, T. Fuji, Y. Ogata, S. Watanuki.....1

Be Your Best You: A Pilot Study of a Positive Psychology Programme for People with Depression, Anxiety or Stress in Greece

A. Kotsoni, K. Kanellakis, A. Stalikas.....13

Psychological Optimization for Adolescents with Physical Motor Deficiency—A Model of Intervention

M. Rusu.....30

Instructional Research on Mental Health Education for College Students from the Perspective of Positive Psychology

J. Li.....49

Using Sports Tracker: Evidences on Dependence, Self-Regulatory Modes and Resilience in a Sample of Competitive Runners

P. Diotaiuti, S. Mancone, S. Corrado.....54

Evaluating the English and Thai-Versions of the Psychological Well-Being Scale across Four Samples

P. Klainin-Yobas, W. Thanoi, N. Vongsirimas, Y. Lau.....71

The Meanings Ascribed to Happiness, Life Satisfaction and Flourishing

M. Bakracheva.....87

Towards a Better Understanding of Negotiation: Basic Principles, Historical Perspective and the Role of Emotions

K. Prassa, A. Stalikas.....105

The Relationship between Intelligence and Executive Functions in Hispanic Patients with Mild Traumatic Brain Injury

J. A. Herrera-Pino, C. E. Castellanos.....137

Notes from the Debate on “Expanded Concept of Health” in Brazil: Ethical-Political Implications and Contextual Mobilization

M. Bagrichevsky.....146

Transgender Experience of Mental Healthcare in Australia

L. M. Halliday, N. J. Caltabiano.....157

Expert Retrieval Structures and Prospective Memory in the Cognition of Acheulian Hominins

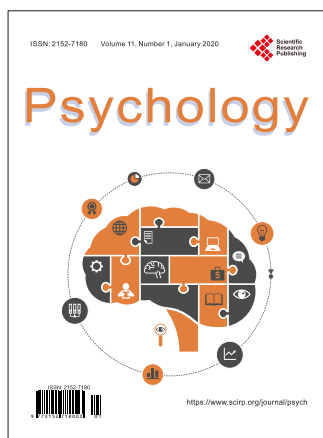
N. Alperson-Afil, N. Goren-Inbar, G. Herzlinger, T. Wynn.....173

Compassion Satisfaction and Fatigue, Emotional Dissonance, and Burnout in Therapists in Rehabilitation Hospitals

H. J. Kim, J. H. Ha, J. Jue.....190

Chopping and Changing: Demographic, Bright and Dark Side Trait Correlates of Job Changes

A. Furnham.....204



Call for Papers

Psychology (PSYCH)

ISSN Print: 2152-7180 ISSN Online: 2152-7199

<https://www.scirp.org/journal/psych>

PSYCH is an international refereed journal dedicated to the latest advancement of Psychology. The goal of this journal is to keep a record of the state-of-the-art research and promote the research work in these fast moving areas.

Subject Coverage

This journal invites original research and review papers that address the following issues in Psychology. Topics of interest include, but are not limited to:

Anomalistic Psychology	Military Psychology
Behavioral Psychology	National Psychology
Biological Basis of Behavior	Neuropsychology
Clinical Psychology	Others
Cognitive Psychology	Political Psychology
Counseling Psychology	Professional Practice
Cultural Psychology	Psychological Assessment and Evaluation
Economic Psychology	Psychology of Art
Educational Psychology	Psychology of Religion
Engineering Psychology	Psychotherapy
Environmental Psychology	Safety Psychology
Ethics in Psychology	School Psychology
Family Psychology and Couples Psychology	Scientific Psychology
Forensic Psychology	Social Psychology
Gerontology	Sport Psychology
Health Psychology	Traffic Psychology
Intelligence Psychology	Work, Industrial and Organizational Psychology
Managerial and Leadership Psychology	

We are also interested in short papers (letters) that clearly address a specific problem, and short survey or position papers that sketch the results or problems on a specific topic. Authors of selected short papers would be invited to write a regular paper on the same topic for future issues of the **PSYCH**.

Notes for Intending Authors

Submitted papers should not have been previously published nor be currently under consideration for publication elsewhere. Paper submission will be handled electronically through the website. All papers are refereed through a peer review process. For more details about the submissions, please access the website.

Website and E-Mail

<https://www.scirp.org/journal/psych>

E-mail: psych@scirp.org

