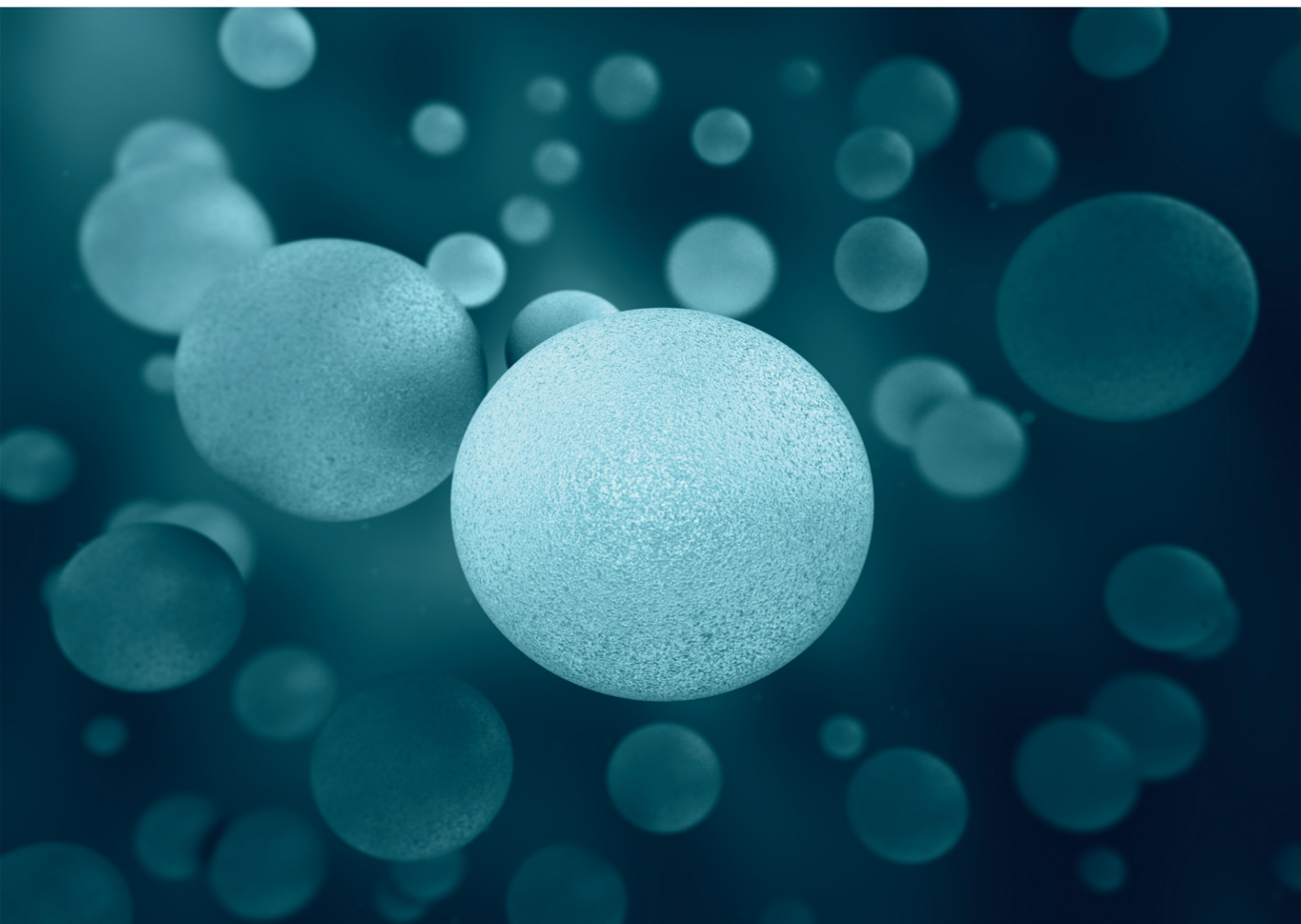


ISSN: 2164-6775

Volume 8, Number 4, October 2018



# Open Journal of Pathology



ISSN: 2164-6775



[www.scirp.org/journal/ojpathology](http://www.scirp.org/journal/ojpathology)

# Journal Editorial Board

ISSN 2164-6775 (Print) ISSN 2164-6783 (Online)

<http://www.scirp.org/journal/ojpathology>

---

## Editor-in-Chief

**Prof. Takuji Tanaka**

Gifu Municipal Hospital, Japan

## Editorial Board

**Dr. Asmaa Gaber Abdou**

Menofiya University, Egypt

**Dr. Julio Aliberti**

Cincinnati Children's Hospital Medical Center, USA

**Prof. Valquiria Bueno**

Federal University of Sao Paulo, Brazil

**Dr. Kailash C. Chadha**

Roswell Park Cancer Institute, USA

**Prof. Nam Hoon Cho**

Yonsei Medical University, South Korea

**Prof. Pranab Kumar Das**

Academic Medical Center-Univ. Amsterdam, UK

**Prof. Jan M. A. Delabie**

University of Oslo and University Hospital of Oslo, Norway

**Prof. Reza Hakkak**

University of Arkansas for Medical Sciences, USA

**Prof. Mansour F. Hussein**

King Saud University, Saudi Arabia

**Prof. Lidia Larizza**

University of Milan, Italy

**Dr. Anthony W. I. Lo**

The Chinese University of Hong Kong, China

**Dr. Vamsi Parini**

Northwestern University, USA

**Prof. Churilov Leonid Pavlovich**

Saint Petersburg State University, Russia

**Dr. George Perry**

The University of Texas at San Antonio, USA

**Prof. Daniela Quaglino**

University of Modena and Reggio Emilia, Italy

**Prof. Matteo A. Russo**

University of Rome, Italy

**Dr. Kunihiro Sakuma**

Toyohashi University of Technology, Japan

**Prof. Han-Seung Yoon**

Iida Municipal Hospital, Japan

# Table of Contents

**Volume 8    Number 4**

**October 2018**

## **Toxico-Pathological Studies of *Foeniculum vulgare* Plant in Mice**

F. A. Al-Hizab, Y. A. Hussein, M. M. Hasseeb, S. E. M. Barakat, M. S. Moqbel.....123

## **Anatomo-Clinical Case: Coexistence of Tuberculosis with Axillary Lymph Node Metastasis in Breast Carcinoma**

A. S. Ouédraogo, H. A. Bambara, F. A. H. A. Ido, W. N. Ramdé, R. J. Sawadogo,

I. Savadogo, S. Ouattara, H. Barry, A. Sanou-Lamien, O. M. Lompo.....132

## **A Case Report of Papillary Renal Cell Carcinoma Seeding along a Percutaneous Biopsy Tract**

C. Busset, S. Vijgen, B. Lhermitte, P. Yan.....139

# Open Journal of Pathology (OJPathology)

## Journal Information

### SUBSCRIPTIONS

The *Open Journal of Pathology* (Online at Scientific Research Publishing, [www.SciRP.org](http://www.SciRP.org)) is published quarterly by Scientific Research Publishing, Inc., USA.

#### Subscription rates:

Print: \$79 per issue.

To subscribe, please contact Journals Subscriptions Department, E-mail: [sub@scirp.org](mailto:sub@scirp.org)

### SERVICES

#### Advertisements

Advertisement Sales Department, E-mail: [service@scirp.org](mailto:service@scirp.org)

#### Reprints (minimum quantity 100 copies)

Reprints Co-ordinator, Scientific Research Publishing, Inc., USA.

E-mail: [sub@scirp.org](mailto:sub@scirp.org)

### COPYRIGHT

#### Copyright and reuse rights for the front matter of the journal:

Copyright © 2018 by Scientific Research Publishing Inc.

This work is licensed under the Creative Commons Attribution International License (CC BY).

<http://creativecommons.org/licenses/by/4.0/>

#### Copyright for individual papers of the journal:

Copyright © 2018 by author(s) and Scientific Research Publishing Inc.

#### Reuse rights for individual papers:

Note: At SCIRP authors can choose between CC BY and CC BY-NC. Please consult each paper for its reuse rights.

#### Disclaimer of liability

Statements and opinions expressed in the articles and communications are those of the individual contributors and not the statements and opinion of Scientific Research Publishing, Inc. We assume no responsibility or liability for any damage or injury to persons or property arising out of the use of any materials, instructions, methods or ideas contained herein. We expressly disclaim any implied warranties of merchantability or fitness for a particular purpose. If expert assistance is required, the services of a competent professional person should be sought.

### PRODUCTION INFORMATION

For manuscripts that have been accepted for publication, please contact:

E-mail: [ojpathology@scirp.org](mailto:ojpathology@scirp.org)



***Call for Papers***

# Open Journal of Pathology

ISSN: 2164-6775 (Print)      ISSN: 2164-6783 (Online)  
<http://www.scirp.org/journal/ojpathology>

Open Journal of Pathology is an international journal dedicated to the latest advancement of pathology. The goal of this journal is to provide a platform for researchers and academics all over the world to promote, share, and discuss various new issues and developments in pathology related problems. All manuscripts must be prepared in English, and are subject to a rigorous and fair peer-review process. Accepted papers will immediately appear online followed by printed hard copy.

## Editor-in-Chief

**Prof. Takuji Tanaka**

Gifu Municipal Hospital, Japan

## Editorial Board

Dr. Asmaa Gaber Abdou  
Dr. Julio Aliberti  
Prof. Valquiria Bueno  
Dr. Kailash C. Chadha  
Prof. Nam Hoon Cho  
Prof. Pranab Kumar Das

Prof. Jan M. A. Delabie  
Prof. Reza Hakkak  
Prof. Mansour F. Hussein  
Prof. Lidia Larizza  
Dr. Anthony W. I. Lo  
Dr. Vamsi Parini

Prof. Churilov Leonid Pavlovich  
Dr. George Perry  
Prof. Daniela Quaglino  
Prof. Matteo A. Russo  
Dr. Kunihiro Sakuma  
Prof. Han-Seung Yoon

## Subject Coverage

The journal publishes original papers including but not limited to the following fields:

- Anatomical Pathology
- Clinical Pathology
- Dermatopathology
- Forensic Pathology
- Molecular Pathology
- Oral and Maxillofacial Pathology
- Pathochemistry
- Pathology History
- Pathophysiology
- Plant Pathology
- Psychopathology
- Veterinary Pathology

We are also interested in: 1) Short reports—2-5 page papers where an author can either present an idea with theoretical background but has not yet completed the research needed for a complete paper or preliminary data; 2) Book reviews—Comments and critiques.

## Notes for Intending Authors

Submitted papers should not have been previously published nor be currently under consideration for publication elsewhere. Paper submission will be handled electronically through the website. All papers are refereed through a peer review process. For more details about the submissions, please access the website.

## Website and E-Mail

<http://www.scirp.org/journal/ojpathology>

E-mail: [ojpathology@scirp.org](mailto:ojpathology@scirp.org)



