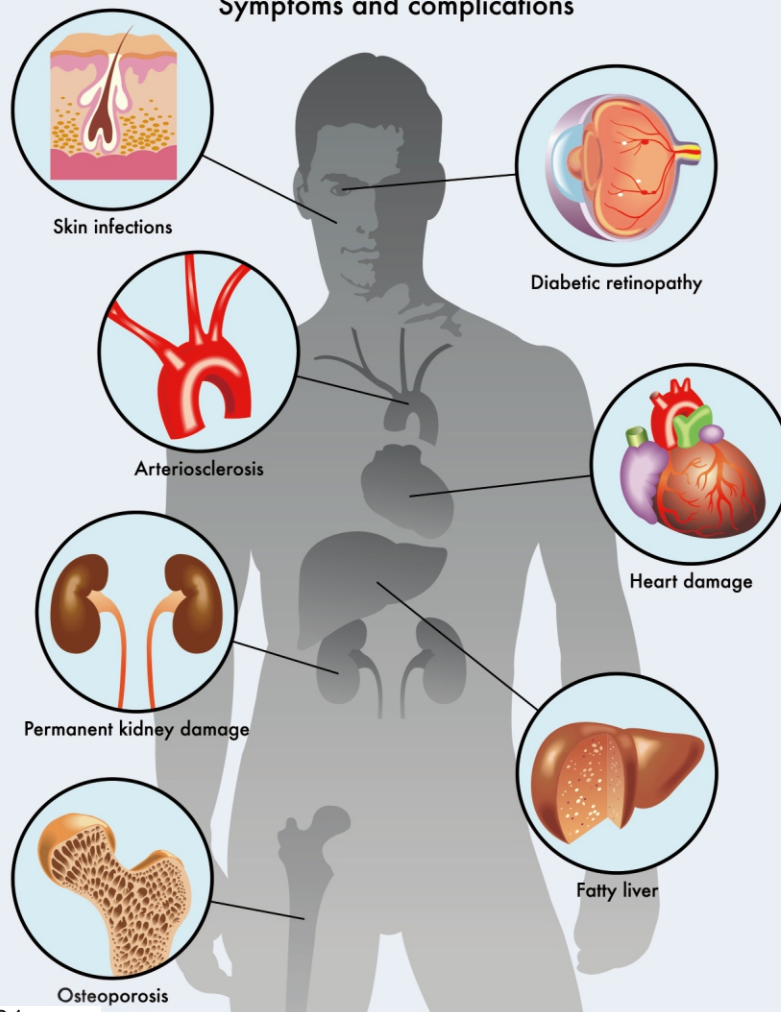


Journal of Diabetes Mellitus

Diabetes Symptoms and complications



ISSN: 2160-5831



Journal Editorial Board

ISSN Print: 2160-5831 ISSN Online: 2160-5858

<http://www.scirp.org/journal/jdm>

Editor-in-Chief

Prof. Sharma S. Prabhakar

Texas Tech University Health Sciences Center, USA

Editorial Board

Dr. Intekhab Ahmed

Thomas Jefferson University, USA

Prof. Bahram H. Arjmandi

Florida State University, USA

Prof. David A. Arnall

East Tennessee State University, USA

Dr. Vivek Bhalla

Stanford University, USA

Prof. Bertrand Cariou

Nantes University Hospital, France

Prof. Dmitry A. Chistyakov

Pirogov Russian State Medical University, Russia

Prof. Fernando Cordido

University of A Coruña, Spain

Prof. Franco Battista Ennio Folli

University of Texas, USA

Prof. Bruce H. Francis

Eisai Inc., USA

Dr. Xianxin Hua

University of Pennsylvania, USA

Prof. Abbas Ali Mansour

Basrah College of Medicine, Iraq

Dr. Felicia V. Nowak

Ohio University, USA

Prof. Kazushi Okamoto

Aichi Prefectural College of Nursing & Health, Japan

Prof. Fernando Ovalle

University of Alabama, USA

Prof. Teresa Quattrin

State University of New York, USA

Prof. Satyan M. Rajbhandari

Chorley & South Ribble Hospital, UK

Prof. Edson da Silva

Federal University of Jequitinhonha and Mucuri Valleys, Brazil

Prof. G. R. Sridhar

Andhra University, India

Prof. Abraham Thomas

Henry Ford Hospital, USA

Table of Contents

Volume 7 Number 3

August 2017

Studies on the Hypoglycemic and Hypolipidemic Effects of *Nelumbo nucifera* Leaf in Long-Evans Rats

D. Islam, A. Huque, L. C. Mohanta, E. P. Lipy, Md. N. Rahman, A. Sultana, Sheuly, U. K. Prodhan.....55

Lycopene Ameliorates Diabetic-Induced Changes in Erythrocyte Osmotic Fragility and Lipid Peroxidation in Wistar Rats

E. D. Eze, Y. Tanko, A. Abubakar, S. O. Sulaiman, K. M. Rabi, A. Mohammed.....71

Efficacy and Safety of Basal-Supported Prandial GLP-1 Receptor Agonist Therapy

T. Nagahisa, M. Tabata, S. Yamada.....86

Dyslipidemia in Kuwaiti Adolescents with Type 1 Diabetes

F. Al Otaibi, M. Abdul-Rasool, R. Yaiesh, N. Al Otaibi.....96

Effect of Initiation of Basal Insulin Glargine on Glycemic Control in Patients with Diabetes: Real Life Experience from Hong Kong

C.-K. Yeung, F. Fhkam, W. W. M. Ngai, I.-T. Lau.....108

Type 2 Diabetes Mellitus in Children and Adolescents: Early Prevention and Non-Drug Therapy

L. N. Zhao, T. Long, A. L. Hui, R. Z. Zhao, S. H. Long, W. Peng.....121

Identification of Atherosclerotic Changes Using B-Mode Ultrasonography in Nigerian Children with Type 1 Diabetes Mellitus

O. O. Ayoola, J. B. E. Elusiyan, T. A. Adedeji.....142

Association between Socio-Demographic Factors and Blood Sugar Levels in Type 2 Diabetes Mellitus Patients in Bangladesh

Md. R. Islam.....151

Barriers and Facilitators of Adherence to Anti-Diabetic Therapy in Pregnant Women with Diabetes: Health Care Workers' Perspectives

D. M. Mukona, S. P. Munjanja, M. Zvinavashe, B. Stray-Pederson.....160

Research of Type 2 Diabetes Patients' Problem Areas and Affecting Factors

S. A. Başkan, M. Tan.....175

Asymptomatic Bacteriuria and Urinary Tract Infection in Pregnant Women with and without Diabetes Mellitus and Gestational Diabetes Mellitus—A Case-Control Study

C. Schneeberger, S. E. Geerlings, J. J. H. M. Erwich, E. R. Van Den Heuvel, P. Middleton, C. A. Crowther.....184

Morbidity Profile and Causes of Mortality in Type 2 Diabetes Patients: Data from a Tertiary Teaching Hospital from Eastern India

S. R. Behera, M. Behera, S. Das, B. P. Panda, S. K. Tripathy, P. C. Dash.....195

Relationship between C-Reactive Protein, White Blood Cell Count and Metabolic Syndrome in Nigerians with Type 2 Diabetes Mellitus

D. O. Soyoye, R. T. Ikem, B. A. Kolawole, R. A. Bolarinwa, O. O. Amjo,
O. T. Yusuff, F. A. Owolabi, O. O. Ezekpo.....212

Journal of Diabetes Mellitus (JDM)

Journal Information

SUBSCRIPTIONS

The *Journal of Diabetes Mellitus* (Online at Scientific Research Publishing, www.SciRP.org) is published quarterly by Scientific Research Publishing, Inc., USA.

Subscription rates:

Print: \$79 per issue.

To subscribe, please contact Journals Subscriptions Department, E-mail: sub@scirp.org

SERVICES

Advertisements

Advertisement Sales Department, E-mail: service@scirp.org

Reprints (minimum quantity 100 copies)

Reprints Co-ordinator, Scientific Research Publishing, Inc., USA.

E-mail: sub@scirp.org

COPYRIGHT

Copyright and reuse rights for the front matter of the journal:

Copyright © 2017 by Scientific Research Publishing Inc.

This work is licensed under the Creative Commons Attribution International License (CC BY).

<http://creativecommons.org/licenses/by/4.0/>

Copyright for individual papers of the journal:

Copyright © 2017 by author(s) and Scientific Research Publishing Inc.

Reuse rights for individual papers:

Note: At SCIRP authors can choose between CC BY and CC BY-NC. Please consult each paper for its reuse rights.

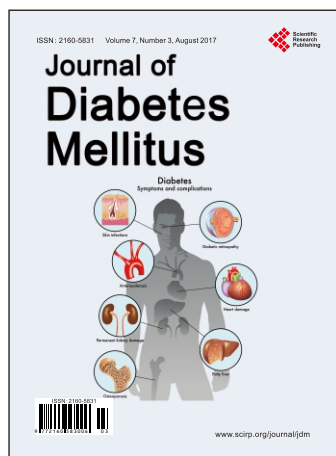
Disclaimer of liability

Statements and opinions expressed in the articles and communications are those of the individual contributors and not the statements and opinion of Scientific Research Publishing, Inc. We assume no responsibility or liability for any damage or injury to persons or property arising out of the use of any materials, instructions, methods or ideas contained herein. We expressly disclaim any implied warranties of merchantability or fitness for a particular purpose. If expert assistance is required, the services of a competent professional person should be sought.

PRODUCTION INFORMATION

For manuscripts that have been accepted for publication, please contact:

E-mail: jdm@scirp.org



Journal of Diabetes Mellitus

ISSN: 2160-5831 (Print) ISSN: 2160-5858 (Online)

<http://www.scirp.org/journal/jdm>

JDM is an international journal dedicated to the current developments of Diabetes Mellitus, the broad scope will also include significant research in the fields of pathology and therapeutic innovations of diabetes itself, both type I and II.

Editor-in-Chief

Prof. Sharma S. Prabhakar

Texas Tech University Health Sciences Center, USA

Editorial Board

Dr. Intekhab Ahmed
Prof. Bahram H. Arjmandi
Prof. David A. Arnall
Dr. Vivek Bhalla
Prof. Bertrand Cariou
Prof. Dmitry A. Chistyakov
Prof. Fernando Cordido

Prof. Franco Battista Ennio Folli
Prof. Bruce H. Francis
Dr. Xianxin Hua
Prof. Abbas Ali Mansour
Dr. Felicia V. Nowak
Prof. Kazushi Okamoto
Prof. Fernando Ovalle

Prof. Teresa Quattrin
Prof. Satyan M. Rajbhandari
Prof. Edson da Silva
Prof. G. R. Sridhar
Prof. Abraham Thomas

Subject Coverage

All manuscripts submitted to JDM must be previously unpublished and may not be considered for publication elsewhere at any time during review period. Additionally, accepted ones will immediately appear online followed by printed in hard copy. The journal publishes original papers including but not limited to the following fields:

- Cardiovascular Diabetology
- Diabetes and Its Complications
- Diabetes and Metabolic Syndrome
- Diabetes and Metabolism
- Diabetes and Vascular Disease
- Diabetes Care
- Diabetes Education
- Diabetes in Developing Countries
- Diabetes Nursing
- Diabetes Research and Clinical Practice
- Diabetes Therapy
- Diabetes, Obesity and Metabolism
- Diabetic Medicine
- Pancreatic Islet Function and Intermediary Metabolism
- Pathogenesis of Diabetes
- Pediatric Diabetes
- Pharmacological Mechanisms of Drug and Hormone Action
- Primary Care Diabetes
- Therapies for Diabetic Complications

We are also interested in short papers (letters) that clearly address a specific problem, and short survey or position papers that sketch the results or problems on a specific topic. Authors of selected short papers would be invited to write a regular paper on the same topic for future issues of the *JDM*.

Notes for Intending Authors

Submitted papers should not have been previously published nor be currently under consideration for publication elsewhere. Paper submission will be handled electronically through the website. All papers are refereed through a peer review process. Authors are responsible for having their papers checked for style and grammar prior to submission to JDM. For more details about the submissions, please access the website.

Website and E-Mail

<http://www.scirp.org/journal/jdm>

E-mail: jdm@scirp.org