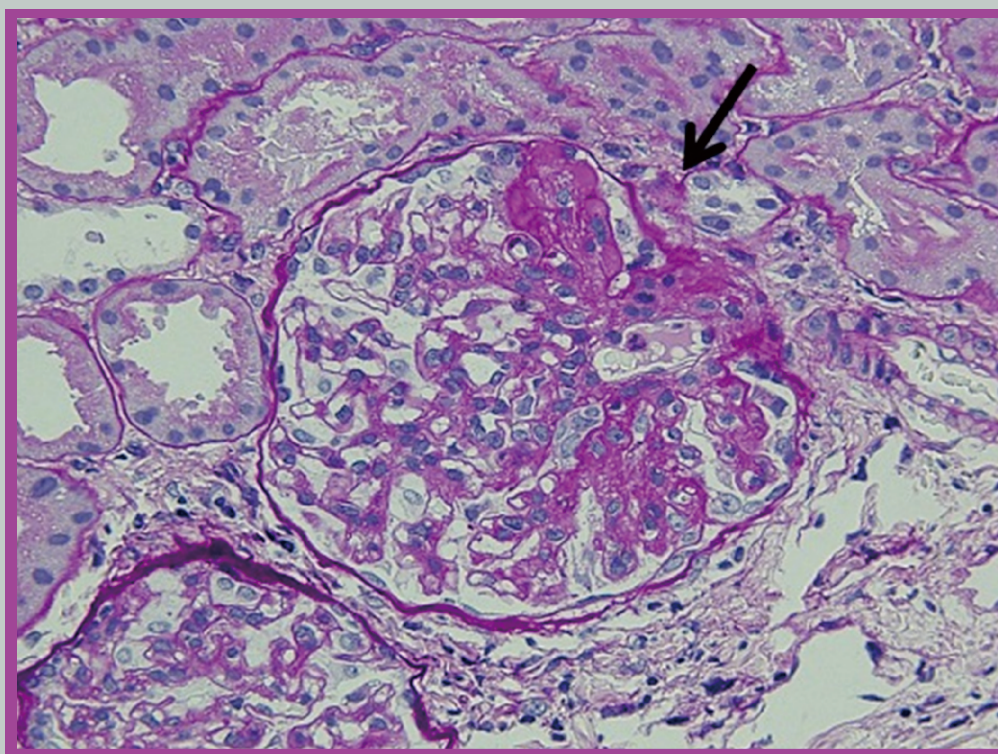




Open Journal of Obstetrics and Gynecology



ISSN: 2160-8792



Journal Editorial Board

ISSN 2160-8792 (Print) ISSN 2160-8806 (Online)

<http://www.scirp.org/journal/ojog>

Editor-in-Chief

Prof. Christos E. Constantinou

Stanford University Medical School, USA

Editorial Board

Dr. Al Moustafa Ala-Eddin

McGill University & Concordia University, Canada

Dr. Samir A. Farghaly

Cornell University, USA

Prof. Robert E. Garfield

St. Joseph's Hospital and Medical Center, USA

Dr. Vesna D. Garovic

Mayo Medical School, USA

Dr. Elizabeth S. Ginsburg

Brigham & Women's Hospital, USA

Prof. Paul J. Hoskins

University of British Columbia, Canada

Prof. William W. Hurd

Case Western Reserve University, USA

Dr. Remah M. Kamel

Jazan University, Saudi Arabia

Prof. Patricia A. Kruk

University of South Florida, USA

Prof. Seung-Yup Ku

Seoul National University, South Korea

Prof. Kodati Vijaya Lakshmi

Vasavi Hospital, India

Dr. Antoine Malek

University Hospital Zurich, Switzerland

Prof. Ospan A. Mynbaev

Peoples' Friendship University of Russia, Russia

Prof. Ahmed M. A. Nasr

Assiut University, Egypt

Prof. M. Steven Piver

Sisters of Charity Hospital, USA

Prof. F. Alameda Quittllet

University of Barcelona, Spain

Prof. Ch. V. Rao

Florida International University, USA

Prof. Gregory Edward Rice

University of Queensland Centre for Clinical Research, Australia

Prof. Lee P. Shulman

Northwestern University, USA

Prof. Marta Tesone

University of Buenos Aires, Argentina

Prof. Osamu Tsutsumi

Sanno Hospital, Japan

Prof. Chengquan Zhao

University of Pittsburgh, USA

TABLE OF CONTENTS

Volume 3, Number 9, November 2013

Bilateral tubal pregnancy: A diagnostic dilemma

R. D. Mandal, S. Ghosh, S. Mitra, A. Basak, P. Naskar¹, K. Seth, A. Halder.....639

Risk factors of clinical birth asphyxia and subsequent newborn death following nuchal cord in a low-resource setting

P. Foumane, G. Nkomom, E. T. Mboudou, J. D. Sama, S. Nguefack, B. Moifo.....642

Effects of gestational weight gain on the outcome of labor at the Yaounde central hospital maternity, Cameroon

R. E. Mbu, H. J. Fouedjio, M. Tabot, F. Y. Fouelifack, F. N. Tumasang, R. N. Tonye, R. J. I. Leke.....648

Evaluation of the *BRCA1/2* mutation as a prognostic marker in primary peritoneal serous cancer

N. Furukawa, S. Ohno, T. Kasai, S. Morioka, F. Ito, Y. Tanase, S. Haruta, S. Kanayama, R. Kawaguchi, S. Yoshida, H. Kobayashi.....653

Vascularity of a breast lump

G. M. Mansour.....658

Female infertility and laparoscopic surgery: A series of 415 operations at the Yaounde Gyneco-Obstetric and Pediatric Hospital, Cameroon

E. T. Mboudou, P. Foumane, F. L.-I. Morfaw, J. Ze Minkande, J. S. Dohbit, B. A. E. Mbatsogo.....663

Laparoscopic diagnosis of endometriosis—Clinical study

H. Lahdemaki, M. Santala, M. Ryyanen.....668

Efficacy and safety of oral solution dosed misoprostol versus misoprostol vaginally in labour induction

L. A. Velasco, M. T. S. Barroso, M. H. S. García, V. G. Acosta, R. de la F. Pedrosa, A. B. Ramírez, L. D. Martínez, E. R. Martínez.....673

Hidden renal disease in a female patient with long-lasting isolated gestational proteinuria followed by hypertension

K. Kawabata, R. Akaishi, A. Nozaki, O. Sato, K. Hanatani, H. Minakami.....680

Regular menses at 73? A peculiar presentation of postmenopausal bleeding

M. McKnoulty, S. Scott.....683

Granulocyte-colony stimulating factor-producing squamous cell carcinoma arising in ovarian mature cystic teratoma: A case report

S. Ichigo, H. Takagi, K. Matsunami, T. Murase, T. Ikeda, A. Imai.....686

Placenta previa and percreta with massive genital bleeding in the first trimester of pregnancy: A case report

M. Yamaguchi, K. Yoshida, T. Takano, T. Enomoto, K. Takakuwa.....690

Maternal complications and the utilisation of maternal health care services with special reference to West Bengal, India

D. Subba.....694

A retrospective comparative series comparing monarc and sparc suburethral slings

A. Foote.....702

Terminal fertility control: Clients' own reason for the choice of the contraceptive method

D. A. Adekanle, A. F. Afolabi, A. S. Adeyemi.....706

The figure on the front cover is from the article published in Open Journal of Obstetrics and Gynecology, 2013, Vol. 3, No. 9, pp. 680-682 by Kosuke Kawabata, *et al.*

Open Journal of Obstetrics and Gynecology (OJOG)

Journal Information

SUBSCRIPTIONS

Open Journal of Obstetrics and Gynecology (Online at Scientific Research Publishing, www.SciRP.org) is published monthly by Scientific Research Publishing, Inc., USA.

Subscription rates:

Print: \$59 per issue.

To subscribe, please contact Journals Subscriptions Department, E-mail: sub@scirp.org

SERVICES

Advertisements

Advertisement Sales Department, E-mail: service@scirp.org

Reprints (minimum quantity 100 copies)

Reprints Co-ordinator, Scientific Research Publishing, Inc., USA.

E-mail: sub@scirp.org

COPYRIGHT

Copyright©2013 Scientific Research Publishing, Inc.

All Rights Reserved. No part of this publication may be reproduced, stored in a retrieval system, or transmitted, in any form or by any means, electronic, mechanical, photocopying, recording, scanning or otherwise, except as described below, without the permission in writing of the Publisher.

Copying of articles is not permitted except for personal and internal use, to the extent permitted by national copyright law, or under the terms of a license issued by the national Reproduction Rights Organization.

Requests for permission for other kinds of copying, such as copying for general distribution, for advertising or promotional purposes, for creating new collective works or for resale, and other enquiries should be addressed to the Publisher.

Statements and opinions expressed in the articles and communications are those of the individual contributors and not the statements and opinion of Scientific Research Publishing, Inc. We assume no responsibility or liability for any damage or injury to persons or property arising out of the use of any materials, instructions, methods or ideas contained herein. We expressly disclaim any implied warranties of merchantability or fitness for a particular purpose. If expert assistance is required, the services of a competent professional person should be sought.

PRODUCTION INFORMATION

For manuscripts that have been accepted for publication, please contact:

E-mail: ojog@scirp.org



Open Journal of Obstetrics and Gynecology (OJOG)

ISSN: 2160-8792 (Print) ISSN: 2160-8806 (Online)
<http://www.scirp.org/journal/ojog>

Open Journal of Obstetrics and Gynecology (OJOG) is an international journal dedicated to the latest advancement of obstetrics and gynecology. The goal of this journal is to provide a platform for scientists and academicians all over the world to promote, share, and discuss various new issues and developments in different areas of obstetrics and gynecology. All manuscripts must be prepared in English, and are subject to a rigorous and fair peer-review process. Accepted papers will immediately appear online followed by printed hard copy.

Editor-in-Chief

Prof. Christos E. Constantinou Stanford University Medical School, USA

Subject Coverage

The journal publishes original papers including but not limited to the following fields:

- Abdominal Imaging
- Gynaecological Oncology
- Infertility
- Maternal-Fetal Medicine
- Midwifery
- Pelvic Floor Rehabilitation
- Pelvic Pain
- Reproductive Endocrinology and Infertility
- Urinary Continence
- Urogynaecology and Pelvic Reconstructive Surgery

We are also interested in: 1) Short Reports—2-5 page papers where an author can either present an idea with theoretical background but has not yet completed the research needed for a complete paper or preliminary data; 2) Book Reviews—Comments and critiques.

Notes for Intending Authors

Submitted papers should not have been previously published nor be currently under consideration for publication elsewhere. Paper submission will be handled electronically through the website. All papers are refereed through a peer review process. For more details about the submissions, please access the website.

Website and E-Mail

<http://www.scirp.org/journal/ojog>

E-mail: ojog@scirp.org