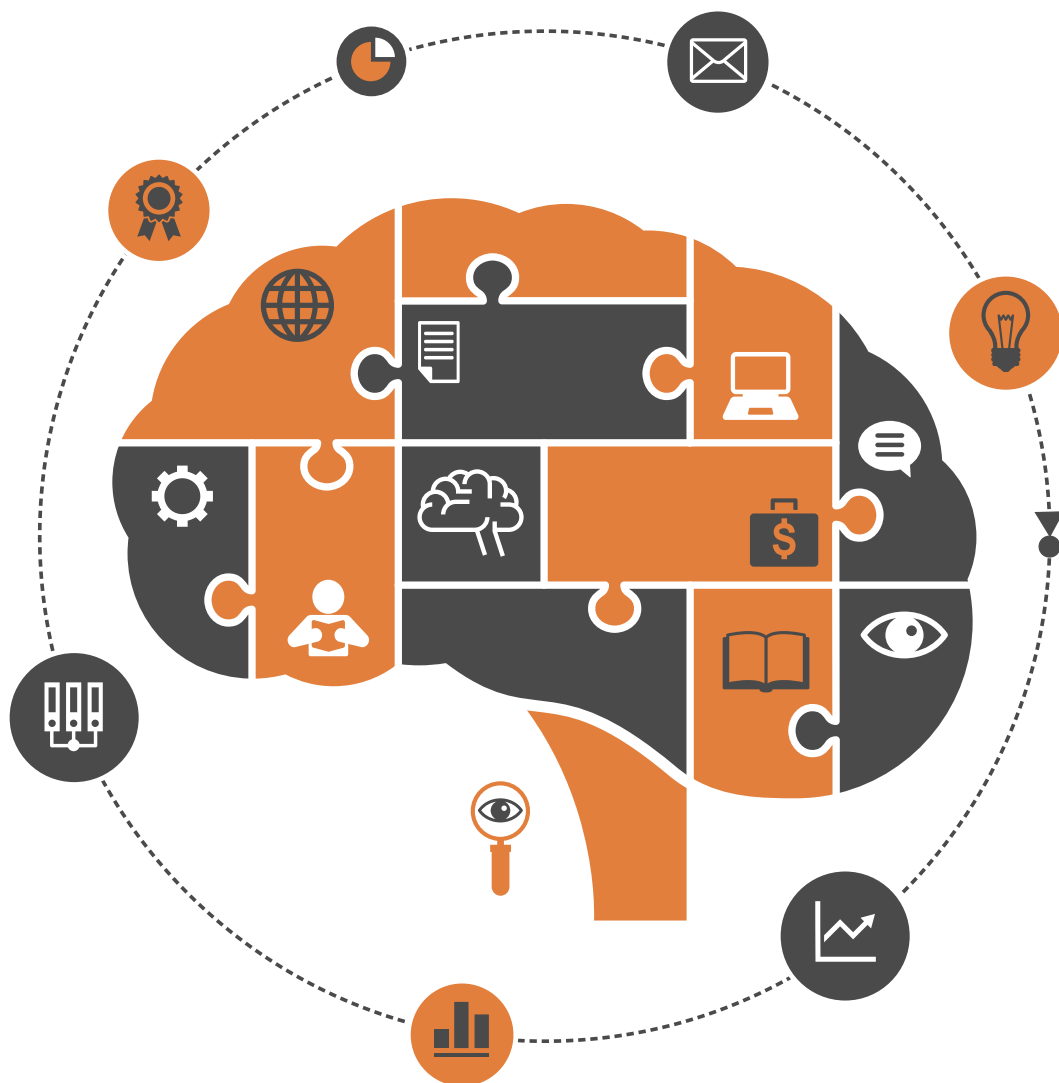


Psychology



ISSN: 2152-7180



www.scirp.org/journal/psych

Journal Editorial Board

ISSN Print: 2152-7180 ISSN Online: 2152-7199

<http://www.scirp.org/journal/psych>

Editorial Board

Dr. Ruggero Andrisano-Ruggieri	University of Salerno, Italy
Dr. Yoram Bar-Tal	Tel-Aviv University, Israel
Prof. Adital Ben-Ari	University of Haifa, Israel
Dr. Sefa Bulut	Ibn Haldun University, Turkey
Prof. Matthew C. Costello	Indiana University South Bend, USA
Dr. Jay R. Elliott	Yale University, USA
Dr. Thomas Vincent Frederick	California Baptist University, USA
Prof. Jay Friedenberg	Manhattan College, USA
Prof. George Kyriacou Georgiou	University of Alberta, Canada
Dr. David M. Goodman	Harvard Medical School, USA
Dr. Hong Jiao	University of Maryland, USA
Dr. Michelle Y. Kibby	Southern Illinois University, USA
Prof. Kenneth A. Kiewra	University of Nebraska-Lincoln, USA
Prof. Beth Kurtz-Costes	University of North Carolina, USA
Dr. Giovanni Laviola	Italian National Institute of Health, Italy
Prof. Yang Lee	Gyeongsang National University, South Korea
Dr. Katerina Maniadaki	Technological Educational Institution, Greece
Prof. Tim F. McLaughlin	Gonzaga University, USA
Dr. John T. Mitchell	Duke University, USA
Dr. Melodee Mograss	McGill University, Canada
Dr. Ora Nakash	Interdisciplinary Center (IDC) Herzliya, Israel
Dr. Raffaella Nori	University of Bologna, Italy
Dr. Jennifer Kim Plybon Penberthy	University of Virginia School of Medicine, USA
Dr. So-Jung Seo	Kyung Hee University, South Korea
Prof. Tuomo Antero Takala	University of Jyväskylä, Finland
Prof. Massimiliano Versace	Boston University, USA
Prof. Edda Weigand	University of Münster, Germany
Dr. Berney J. Wilkinson	Webster International University, USA
Dr. Patricia Gail Williams	University of Louisville, USA
Dr. Hui-Ching Wu	National Taiwan University, Chinese Taipei
Prof. Wengang Yin	Chinese Academy of Sciences, China

Table of Contents

Volume 9 Number 5

May 2018

Insight into an Acquired Accent of Maritime English Learners

O. Tyron.....897

Prevalence of Neurodevelopmental Disorders in Japanese Children's Homes

E. Ozawa, K. Takahashi, S. Harizuka.....911

Gaudiebility and Psychopathological Symptoms in the Mexican Population

J. O. González-Cantero, V. H. González-Becerra, L. M. Ramírez-Zamora, J. G. Salazar-Estrada, J. M. del Rio,
 D. O. Sánchez, A. A. V. Ramírez.....925

Social Hygiene Movement and Psychology: Towards Another Paradigm in Mental Health

R. N. Furtado, J. A. de Oliveira Camilo, G. M. de Luiz.....934

Relationships between Verbal and Visuospatial Working Memories and Source Monitoring among Young Children

I. Ozawa, M. Yuzawa.....945

Assessment of Hostile Attribution Bias in Early Childhood

M. Houssa, N. Nader-Grosbois, A. Volckaert.....958

Occupational Training for Women with Parkinson's Disease: An Experience of Cooking Activities

S. Piccoli, S. Pizzighello, C. Gava, A. Martinuzzi.....977

Comment on the Research Progress of the Impact of Organizational Citizenship Pressure

J. Chen, L. T. Dai.....985

The Influence of Psychological Distance on Ambiguity Decision Making: A Perspective Based on the Construal Level Theory

Z. Y. Tan, Y. Z. Liu.....997

A Review of Researches Workplace Loneliness

X. Zhou.....1005

Incremental Role of Family Relationships and Hurt Intensity in Forgiveness of Family Offenders: A Study of College Students in Taiwan

I. R. Edara, J.-L. Chen.....1023

Executive Functioning in Every Day Life in Ecuatorian Adolescents with Developmental Dyslexia

M. Soriano-Ferrer, E. Piedra-Martínez, M. Arteaga.....1050

The Influence of Power Sense on Cooperation: The Mediating Effect of Perceived Control and the Moderating Effect of Dominance Motivation

C. Yang, Y. Z. Liu, H. J. Chen.....1065

Changes in Study Habits of Chinese Adolescents and Factors Supporting These Habits-Focusing on the Transition Period from Elementary School to Junior High School

K. Okado, N. Kida, T. Sakai.....1081

Can the Depression Anxiety Stress Scales Short Be Shorter? Factor Structure and Measurement Invariance of DASS-21 and DASS-9 in a Greek, Non-Clinical Sample

T. A. Kyriazos, A. Stalikas, K. Prassa, V. Yotsidi.....1095

How Interpersonal Coordination Can Reflect Psychological Counseling: An Exploratory Study

K. Kodama, K. Hori, S. Tanaka, H. Matsui.....1128

A 3-Faced Construct Validation and a Bifactor Subjective Well-Being Model Using the Scale of Positive and Negative Experience, Greek Version

T. A. Kyriazos, A. Stalikas, K. Prassa, V. Yotsidi.....1143

Patients' Experiences after Cognitive Behavior Group Therapy: From Anxiety to Feelings of Perceived Security

C. Abrahamsson, B. Nordling, C. S. Michelsen, T. Norlander.....1176

Psychological Empowerment: Users and Professionals in Psychiatric Care before and after Mindfulness Treatment

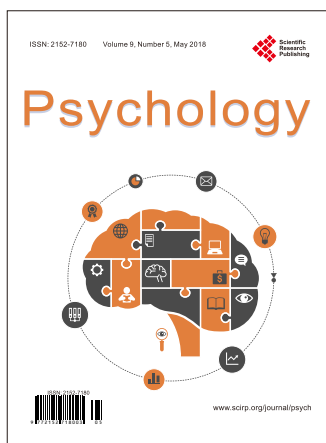
C. S. Michelsen, P. Sundberg, L. Ekstrand, T. Norlander.....1194

Is the Greek Version of Teacher's Evaluation of Student's Conduct (TESC) a Valid and Reliable Measure?

A. Z. Giotso, A. N. Zergiotis, T. Kyriazos.....1208

The Impact of Servant Leadership on Proactive Behaviors: A Study Based on Cognitive Evaluation Theory

J. Luo, J. B. Zheng.....1228



Call for Papers

Psychology (PSYCH)

ISSN Print: 2152-7180 ISSN Online: 2152-7199

<http://www.scirp.org/journal/psych>

PSYCH is an international refereed journal dedicated to the latest advancement of Psychology. The goal of this journal is to keep a record of the state-of-the-art research and promote the research work in these fast moving areas.

Subject Coverage

This journal invites original research and review papers that address the following issues in Psychology. Topics of interest include, but are not limited to:

Behavioral Psychology	Military Psychology
Biological Basis of Behavior	National Psychology
Clinical Psychology	Neuropsychology
Cognitive Psychology	Political Psychology
Counseling Psychology	Professional Practice
Cultural Psychology	Psychological Assessment and Evaluation
Economic Psychology	Psychology of Art
Educational Psychology	Psychology of Religion
Engineering Psychology	Psychotherapy
Environmental Psychology	Safety Psychology
Ethics in Psychology	School Psychology
Family Psychology and Couples Psychology	Scientific Psychology
Forensic Psychology	Social Psychology
Gerontology	Sport Psychology
Health Psychology	Traffic Psychology
Intelligence Psychology	Work, Industrial and Organizational Psychology
Managerial and Leadership Psychology	Others

We are also interested in short papers (letters) that clearly address a specific problem, and short survey or position papers that sketch the results or problems on a specific topic. Authors of selected short papers would be invited to write a regular paper on the same topic for future issues of the **PSYCH**.

Notes for Intending Authors

Submitted papers should not have been previously published nor be currently under consideration for publication elsewhere. Paper submission will be handled electronically through the website. All papers are refereed through a peer review process. For more details about the submissions, please access the website.

Website and E-Mail

<http://www.scirp.org/journal/psych>

E-mail: psych@scirp.org

